

How to Connect PC to TV via HDMI

TipsMake today will show you how to connect your PC to your TV using an HDMI cable. When you connect your PC to your TV, you will be able to project your computer screen on your TV and watch movies or browse the Internet on the big screen. All you need is to connect the two devices using an HDMI cable.

Connect PC to TV



Connect the end of the HDMI cable to the PC. The HDMI slot is usually located behind a desktop computer's CPU, or on the side of a laptop keyboard.

Some PCs can use HDMI ports, others use mini HDMI or MiniDisplay ports.

With mini HDMI and MiniDisplay cables, one end will be a mini HDMI or MiniDisplay plug to plug into a computer, the other end will be a regular size HDMI cable.

Not all computers have an HDMI port. Some older computers use VGA or DVI cables. You can connect these cables to the HDMI port on your TV using a separate adapter and audio cable. If the laptop doesn't support HDMI or video out, you can purchase a USB-to-HDMI adapter. You may need to install additional software on your PC.



Plug one end of the cable into the TV. Find an empty HDMI port on your TV and plug one end of the cable into it. These ports are usually labeled "HDMI" and numbered.

You should make a note of the HDMI port you are connecting to.

Make sure you buy an HDMI cable that's long enough to connect from your PC to your TV. Measure the distance if necessary.



Use the TV remote to select the HDMI source on the TV. Find the "Source", "Input" or similar button on the TV or remote. Click this button to select the HDMI port you connected your PC to.

After connecting the PC and TV together, the TV will sometimes display the content on the computer screen by itself. If there is nothing on the screen, apply method 2 to detect TV on Windows 10.

Use the digital label on the HDMI port to identify the HDMI source to which the computer is connected.

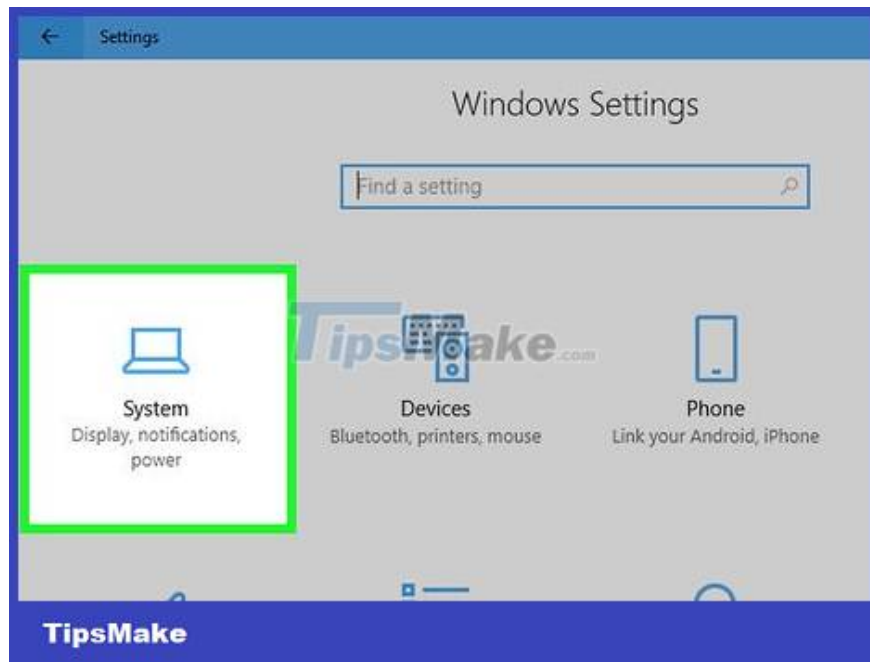
Detect TV on Windows



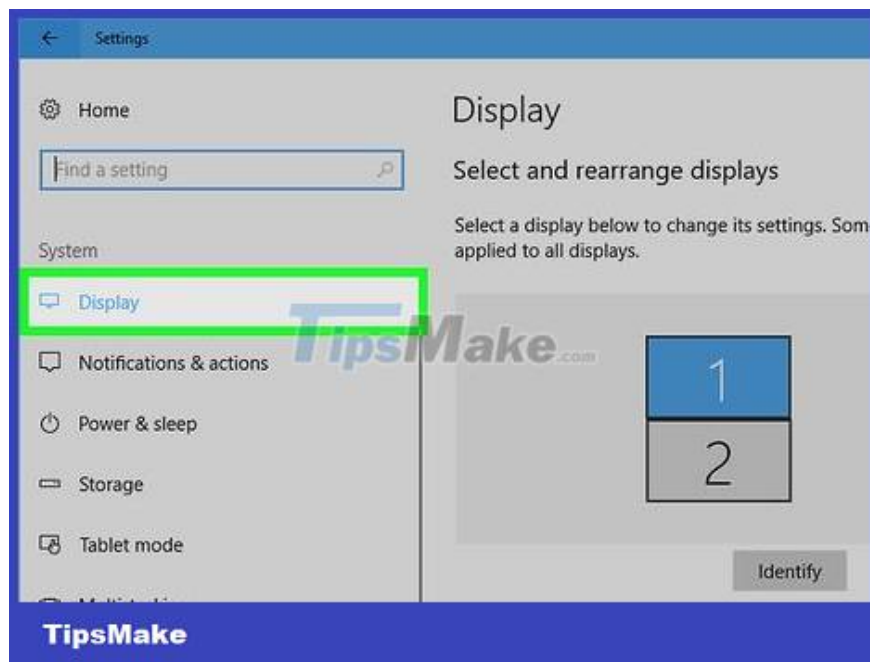
Click the Start menu with the Windows icon, usually located in the lower left corner on PC. The Start menu will appear.



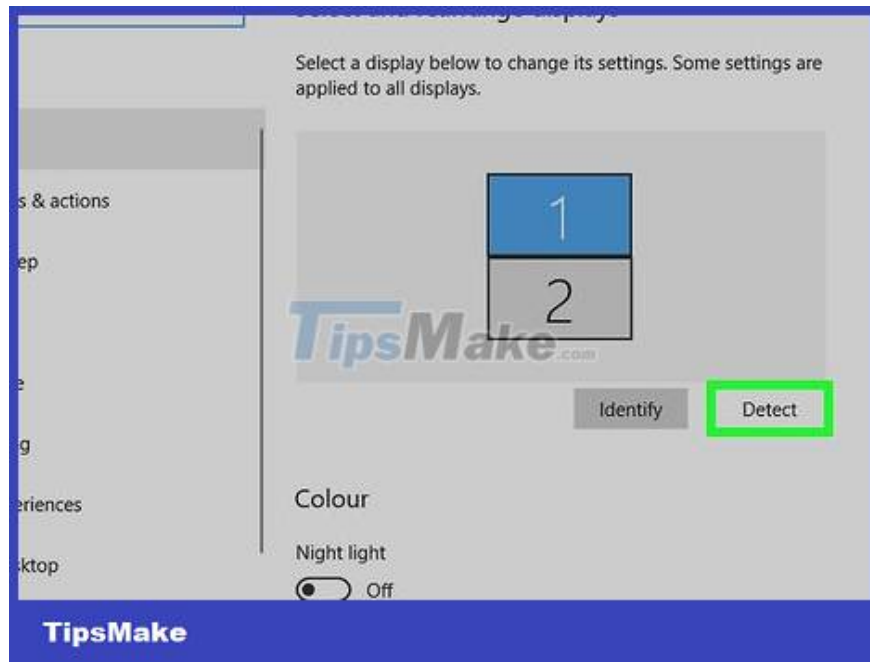
Click the Gear-shaped Settings icon on the left side of the Start menu.



Click System . This option is next to the laptop icon at the top of the Windows Settings menu.



Click Display . This is the first option located in the left sidebar menu. The Display settings will appear.



Scroll down and click Detect . This option is at the bottom of the Display Settings menu. Windows will detect all connected monitors.

Adjust the resolution if necessary for better display on the TV. If you have an HDTV, select 1920 x 1080 in the "Resolution" drop-down menu. For 4K TVs, the appropriate resolution is 3840 x 2160 or highest in the "Resolution" menu.

You finished reading the article "**How to Connect PC to TV via HDMI**" edited by the [TipsMake](#) team. We hope this article has provided you with many useful tech tips and tricks. You can search for similar articles on tips and guides. Thank you for reading and for following us regularly.