

# How to connect L2TP / IPsec VPN on Windows 10

This article will describe how you can configure L2TP / IPsec VPN on Windows 10.

## Condition

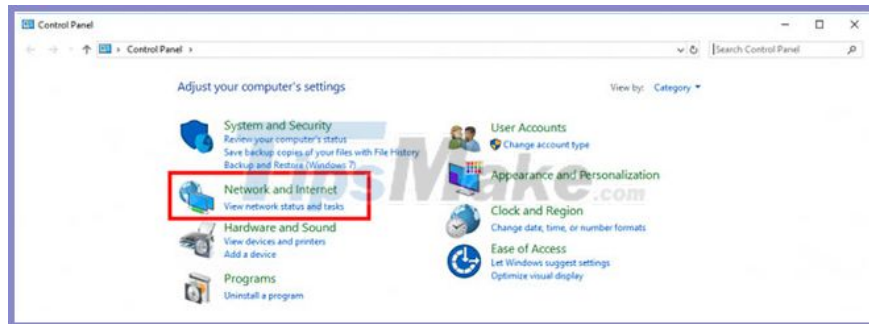
1. Windows 10
2. Access to Windows 10 as admin

## How to connect L2TP / IPsec VPN on Windows 10

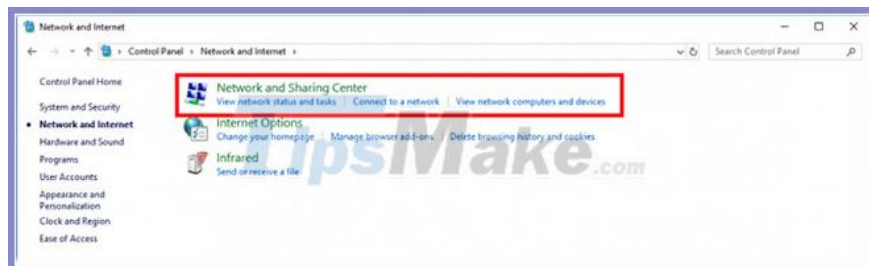
### Step 1 - Sign in to Windows 10

Click the search icon in the Windows menu bar and search for **control panel** . You will see the **Control Panel** icon . Click it.

Open **Network and Internet** .



Open the **Network and Sharing Center** .

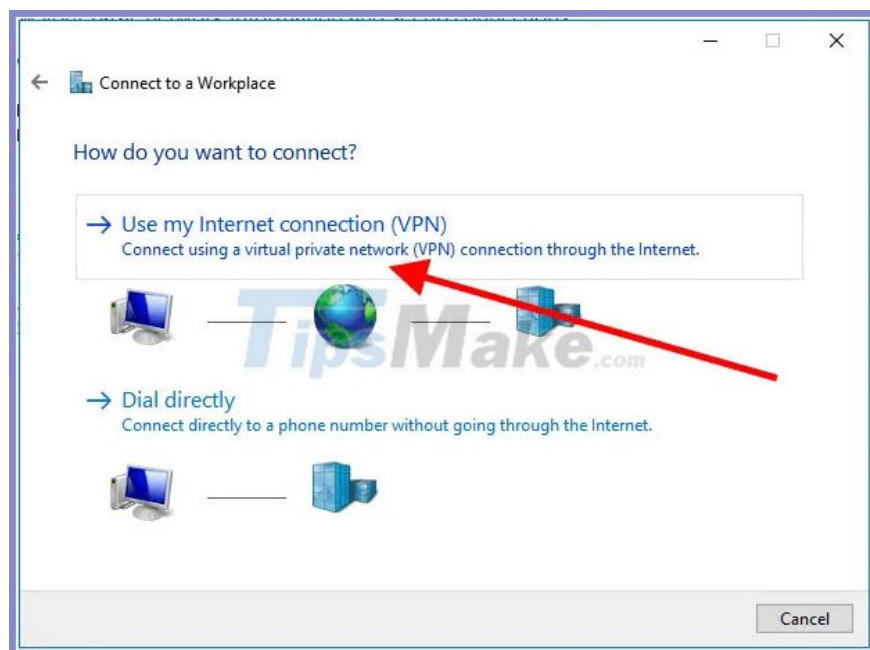


## Step 2 - Configure VPN

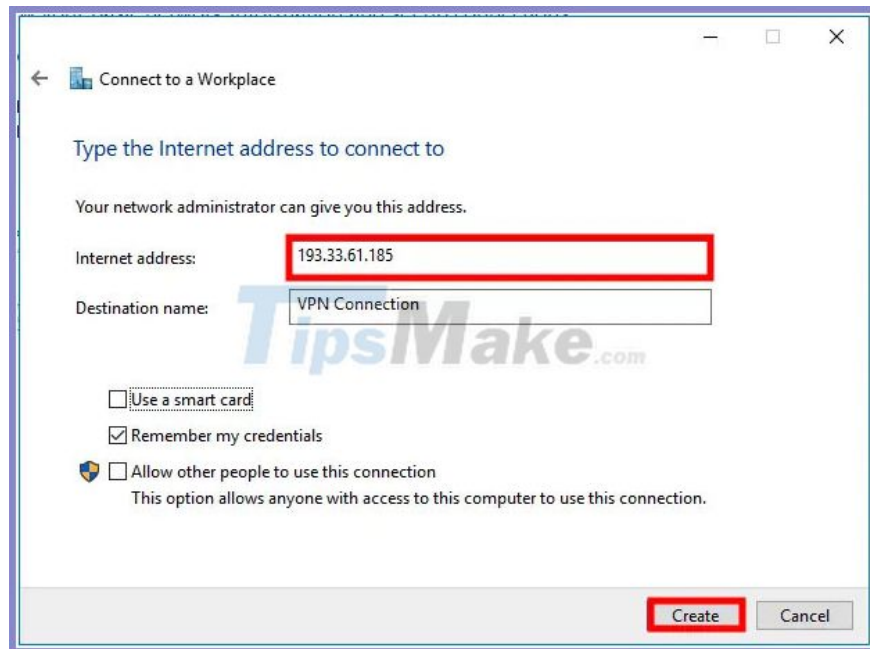
Click **Set up a new connection on a network** .

Select **Connect to a workplace** and click **Next**.

Click **Use my Internet connection (VPN)** .



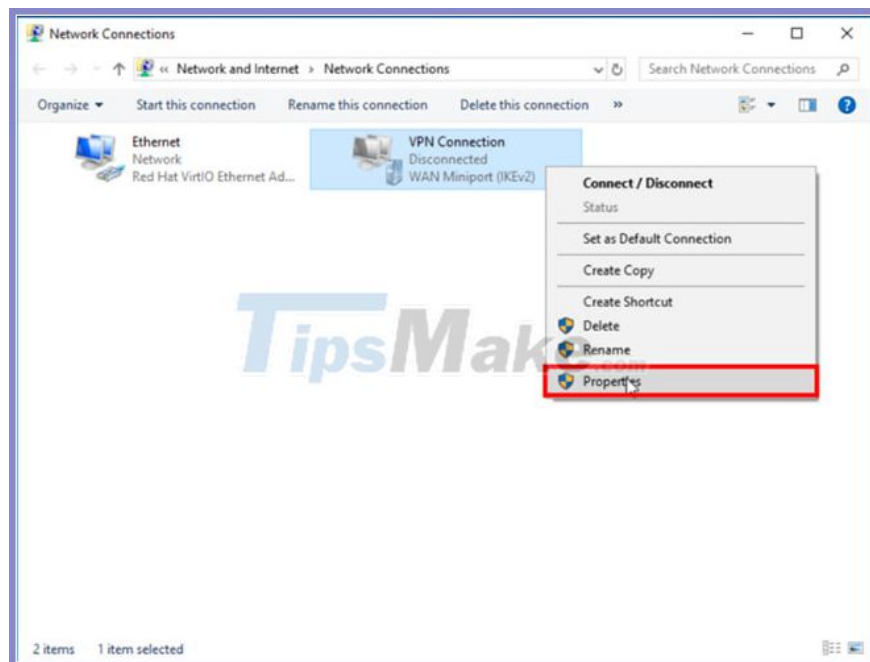
Enter your IP address in the **Internet Address** field . In this example, the article uses IP **193.33.61.185**. Click **Create**.



After you click **Create** , the setup wizard will be closed.

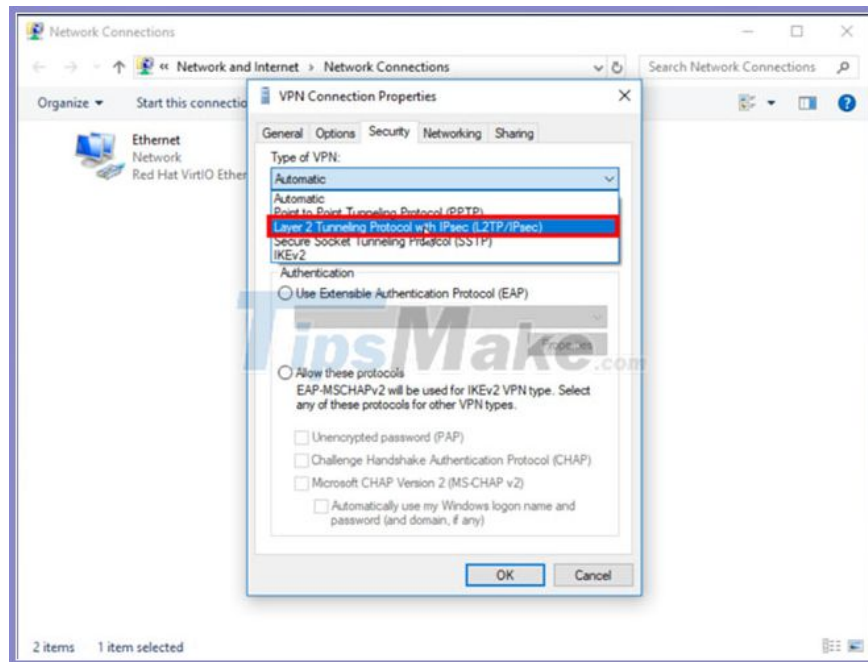
Click on **Change adapter settings** on the left menu.

You will now see all available interfaces. Open the **Properties** of the VPN connection interface.



Open the **Security** tab .

Open the **Type of VPN** drop-down menu and select **Layer 2 Tunneling Protocol with IPsec (L2TP / IPsec)** .

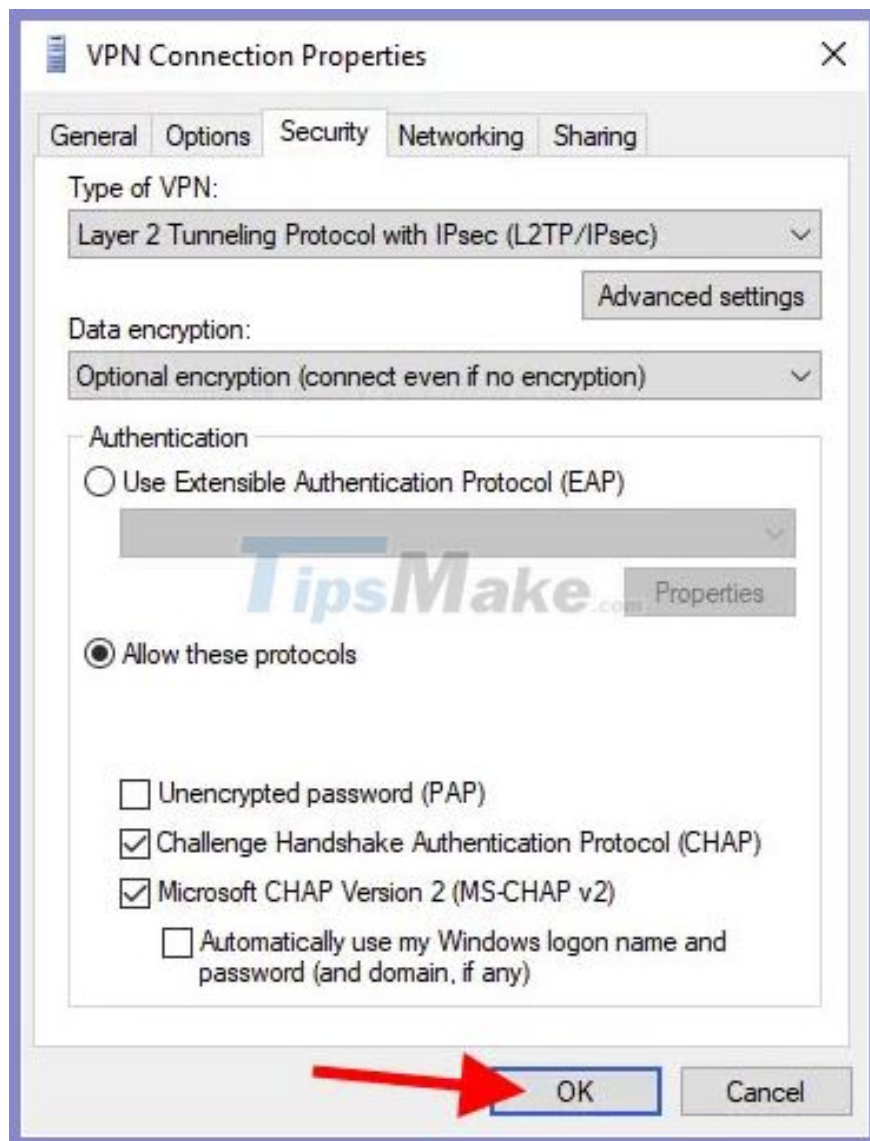


Click **Advanced settings** . Select **Use preshared key for authentication** and enter the pre-shared key you created on Windows Server. Apply it by clicking **OK**.

Go back to the **Security** tab . Select **Allow these protocols** and check the following values:

1. Challenge Handshake Authentication Protocol (CHAP)
2. Microsoft CHAP Version 2 (MS-CHAP v2)

Apply the changes by clicking **OK**.



### Step 3 - Connect to the VPN server

Open the **Network** icon in the bottom right and click on **VPN Connection**.

After you click on **VPN Connection** , the **Connect** button will display. Click this button .

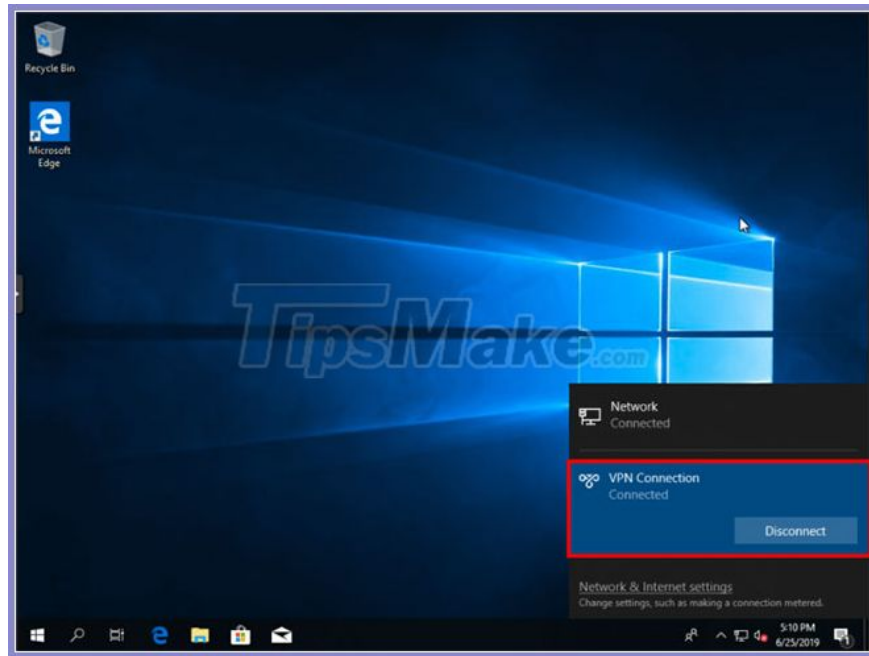


You will be asked to enter a **Username** and **Password**.

The connection process takes place:



Your VPN connection is established.



#### Step 4 - Check the IP address

If you are routing all traffic through a VPN, you should see your VPN server IP address. You can find your IP address by going to [whatismyip.com](http://whatismyip.com).

Congratulations, you have successfully configured a VPN client on Windows 10!

You finished reading the article "**How to connect L2TP / IPsec VPN on Windows 10**" edited by the [TipsMake](#) team. We hope this article has provided you with many useful tech tips and tricks. You can search for similar articles on tips and guides. Thank you for reading and for following us regularly.