

How to Connect iPhone to TV Wirelessly

To connect your iPhone to TV wirelessly you must rely on the Airplay technology and Apple TV unit. Follow the steps below to wirelessly connect almost all iPhones (iOS 6, 7, 8, 9)) to a TV to play audios, videos, photos, games, and device...

Part 1 of 3:

Preparing

1.



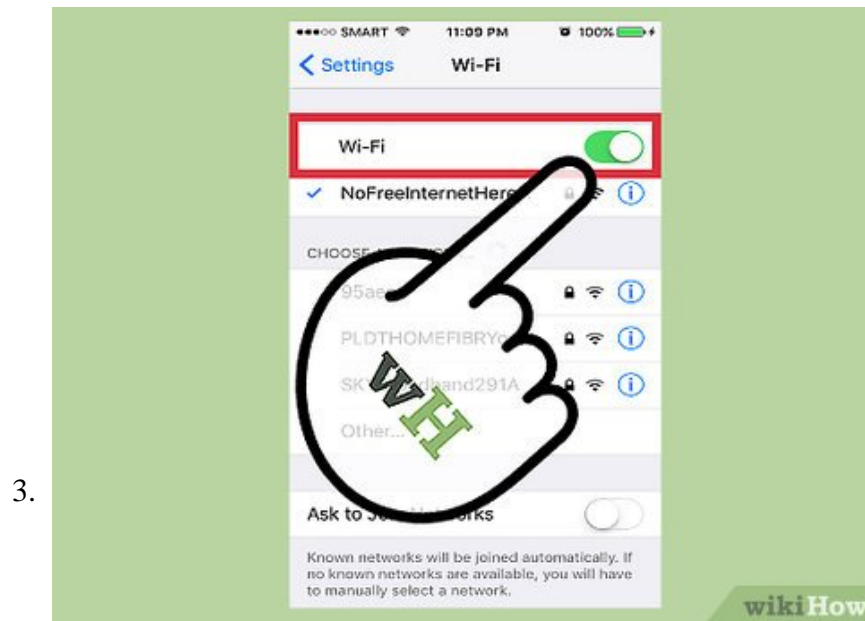
Check that your devices support the Airplay[1] function. To connect iPhone to TV wirelessly by Airplay, you need:

1. iPhone 4 or later. iPhone 4s or later for AirPlay Mirroring.
2. The 2nd generation Apple TV or later.
3. A Wi-Fi network in good condition.



Turn on your Apple TV and TV.

1. If it's your first time to use an Apple TV, How to Set Up an Apple TV can help you connect Apple TV to TV and set it up.



Connect your iPhone and Apple TV to the same Wi-Fi network.

1. If it's your first time to use an iPhone, How to Join a Wireless Network from Your iPhone will teach you how to connect your iPhone to a wireless Internet.
2. If it's your first time to use an Apple TV, Use Apple TV can help you connect Apple TV to the wireless network.

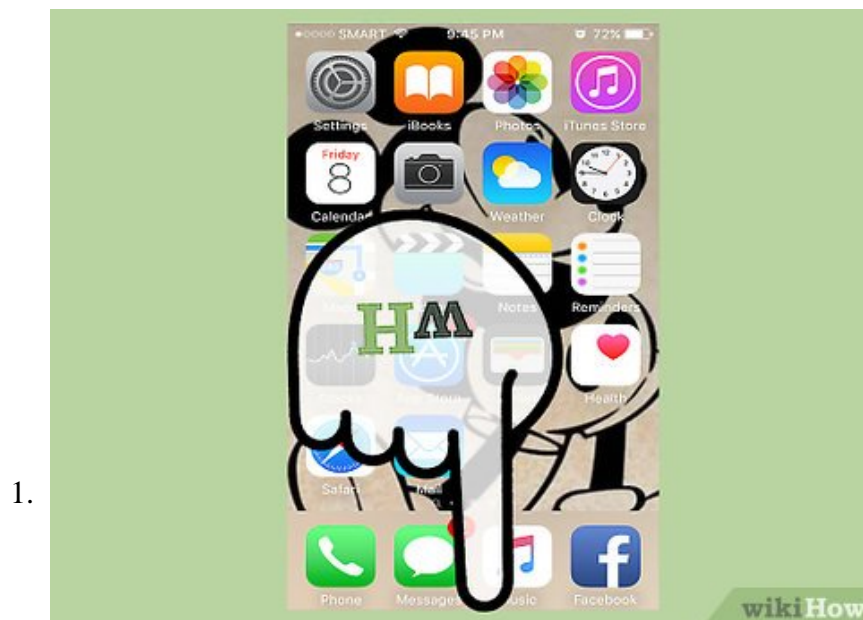


Turn on Airplay on Apple TV.

1. Go to Settings on your Apple TV
2. Choose Airplay
3. Click to turn Airplay on.

Part 2 of 3:

Using Airplay

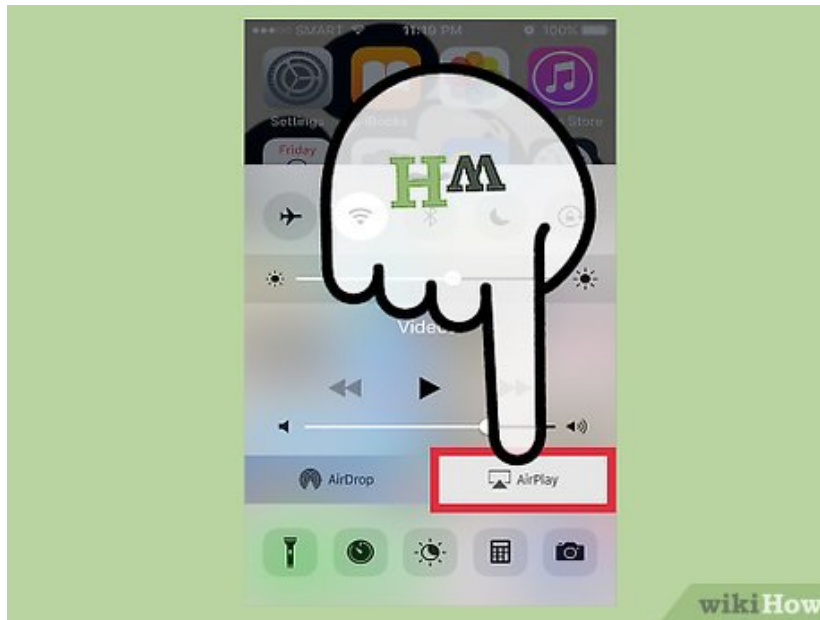


Swipe up from the bottom of your iPhone (running iOS 7, 8,9) screen to open Control Center.^[2]

1. To use AirPlay on iPhone running iOS 6, double press the Home button to open a list of recent apps. Swipe from left to right to open the brightness menu. Tap the AirPlay button and choose the name

of your Apple TV from the menu that appears.

2.



Tap Airplay to check the list of Airplay receivers.

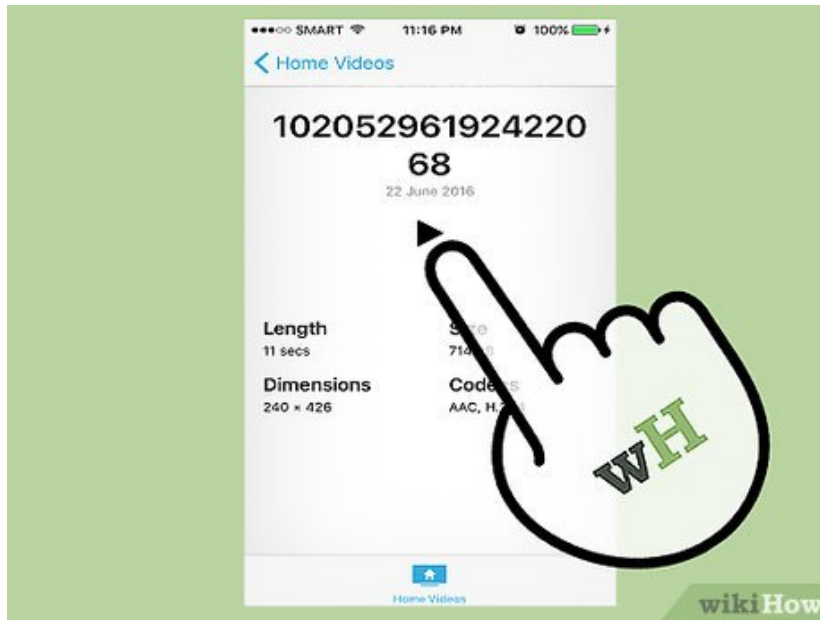
3.



Choose the name of your Apple TV from the list and tap "Done".

1. If you turn on Mirroring, you'll stream your entire iOS screen on the TV that's connected to your Apple TV.

4.

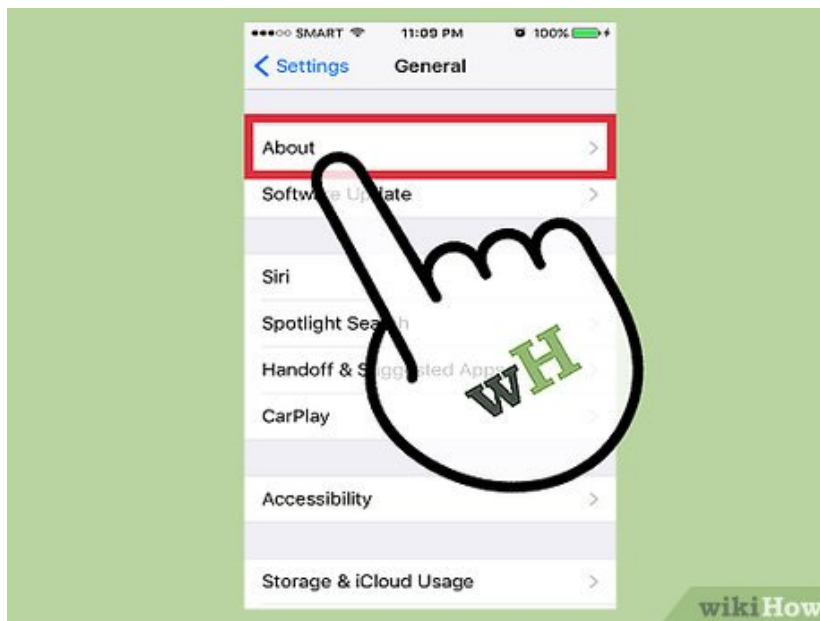


Return to the Home screen, and play the music, video, photo, or screen you want to stream, then they will be displayed on the TV screen.

Part 3 of 3:

Using Peer-to-Peer AirPlay

1.



To use peer-to-peer AirPlay, firstly make sure your devices meet the following requirements:

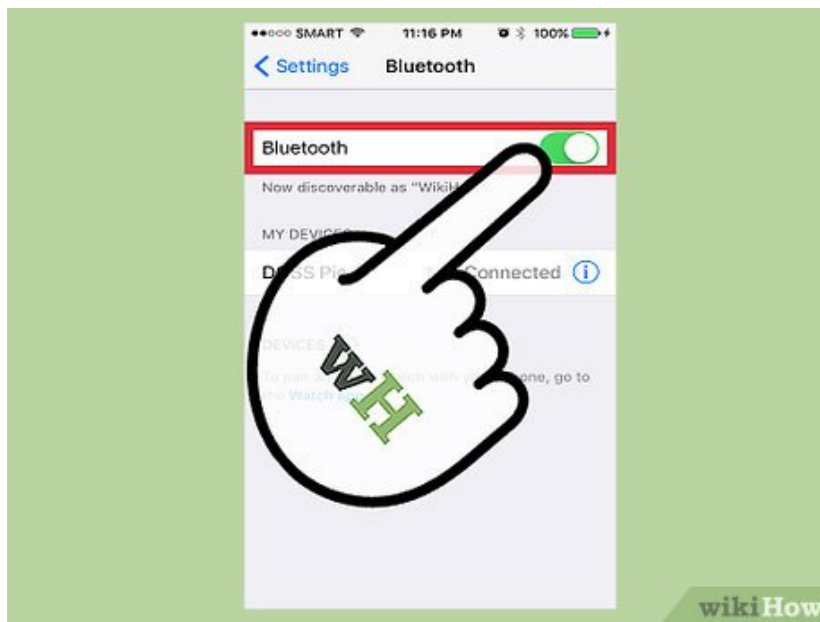
1. iPhone 5 or later
2. Apple TV (3rd generation rev A, model A1469 or later)

2.



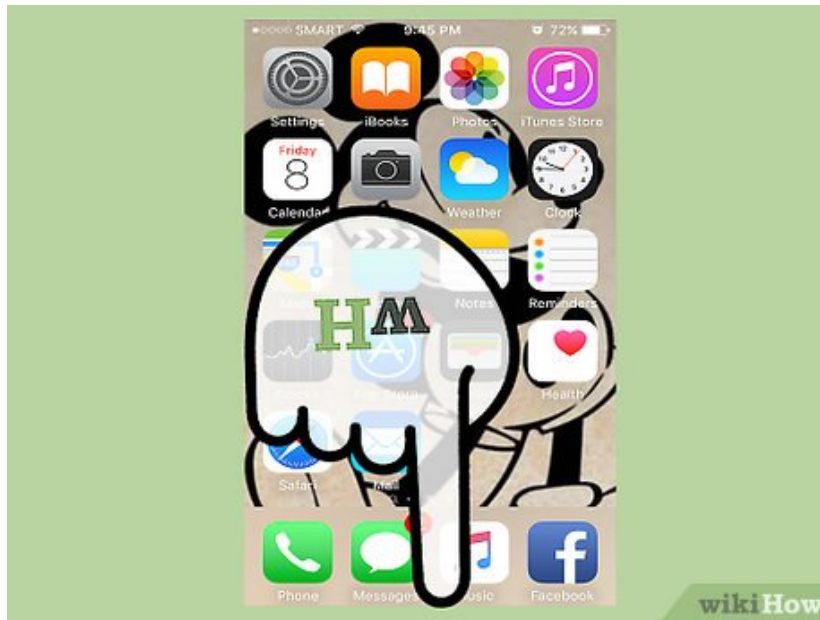
Connect your iPhone and Apple TV to Wi-Fi. With peer-to-peer AirPlay, your iOS device and Apple TV don't have to be on the same Wi-Fi network.

3.



Turn on the Bluetooth on your iPhone.

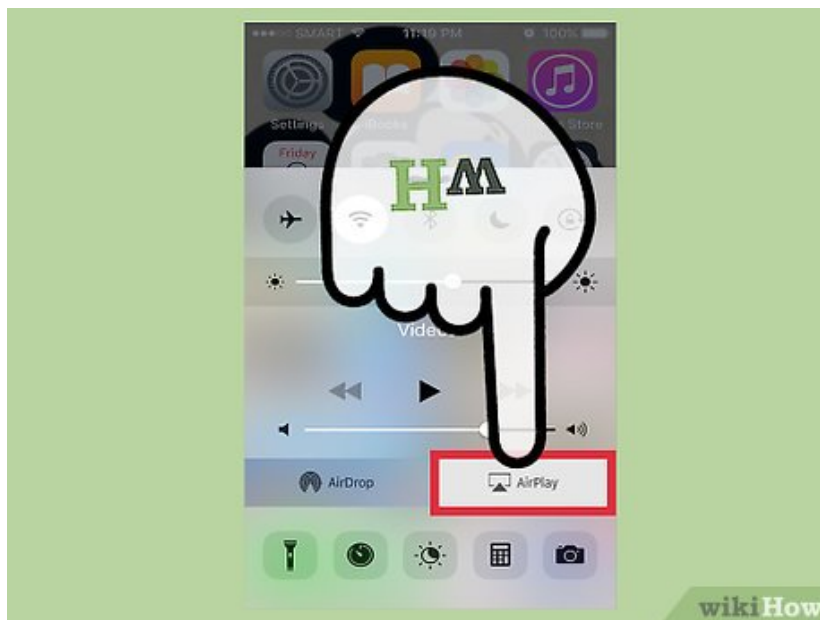
4.



Swipe up from the bottom of your iPhone (running iOS 7, 8,9) screen to open Control Center.^[3]

1. To use AirPlay on iPhone running iOS 6, double press the Home button to open a list of recent apps. Swipe from left to right to open the brightness menu. Tap the AirPlay button and choose the name of your Apple TV from the menu that appears.

5.



Tap Airplay to check the list of Airplay receivers.

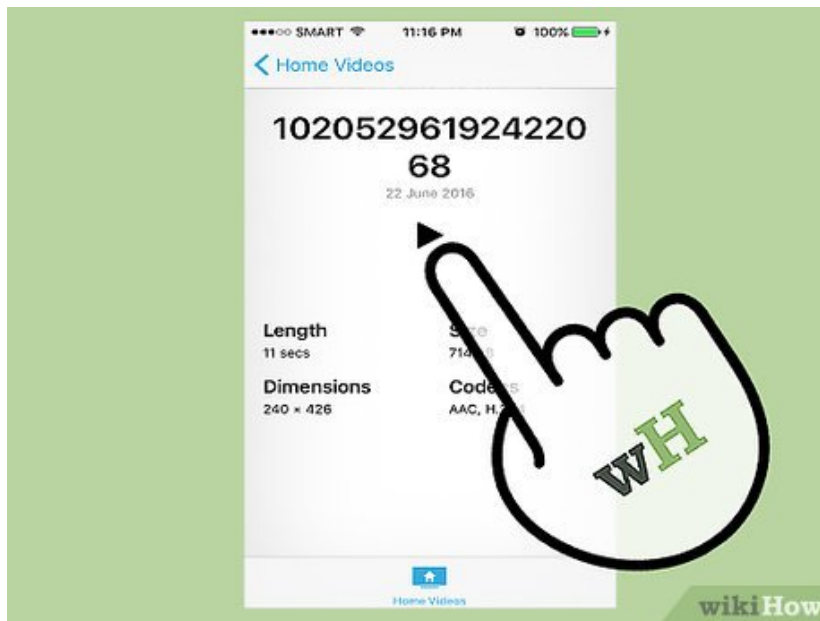
6.



Choose the name of your Apple TV from the list and tap "Done".

1. If you turn on Mirroring, you'll stream your entire iOS screen on the TV that's connected to your Apple TV.

7.



Return to the Home screen. Play the music, video, photo, or screen you want to stream, then they will be displayed on the TV screen.

You finished reading the article "**How to Connect iPhone to TV Wirelessly**" edited by the [TipsMake](#) team. We hope this article has provided you with many useful tech tips and tricks. You can search for similar articles on tips and guides. Thank you for reading and for following us regularly.