

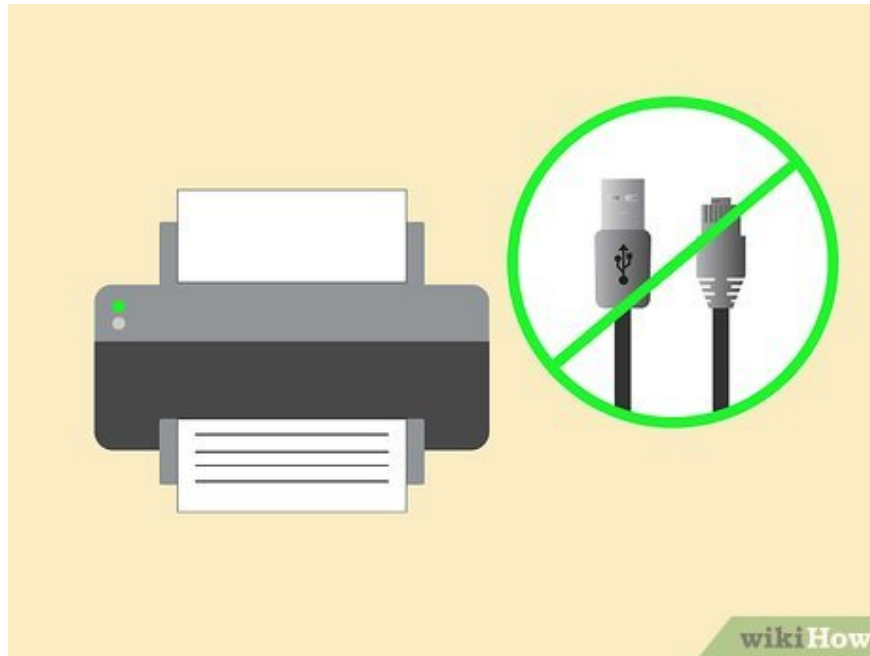
How to Connect HP Deskjet 3050 to a Wireless Router

After connecting your HP Deskjet 3050 printer to your wireless router, you can conveniently print documents without worrying about cables. Just know the router username and password, you will easily connect your HP Deskjet printer to the wireless router on any Windows or Mac computer.

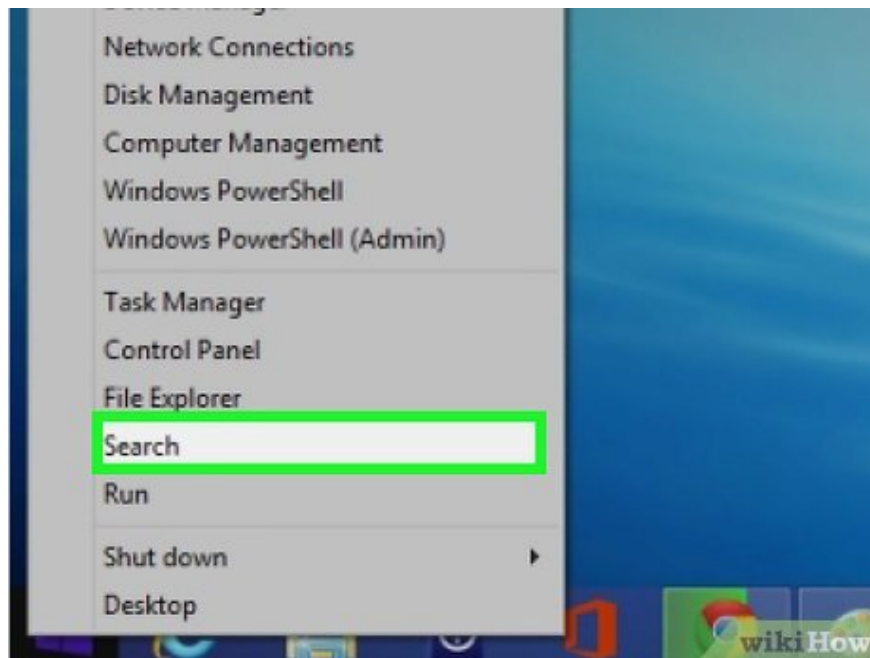
Windows 8



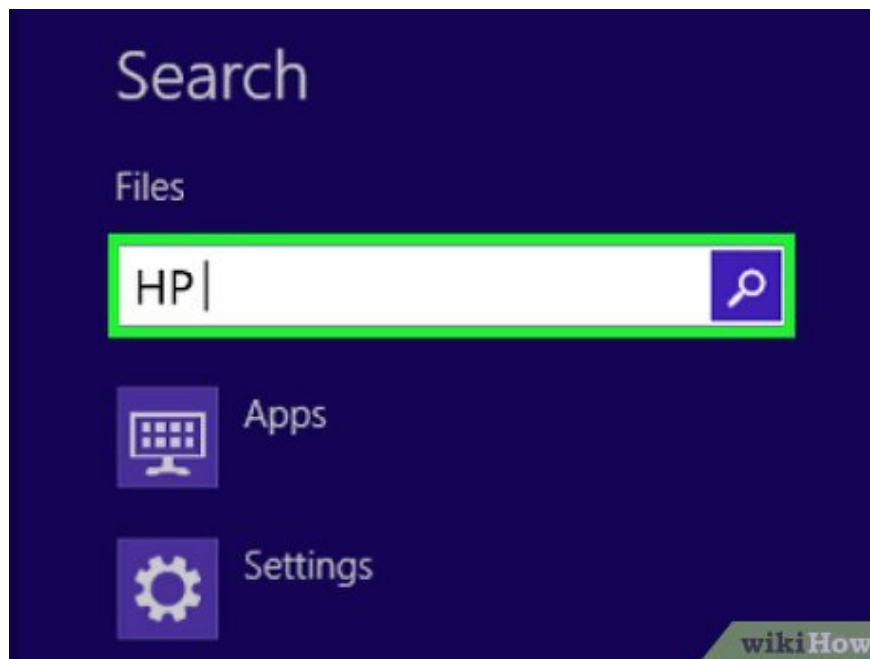
Check to make sure your computer, printer, and wireless router are turned on.



Unplug all USB or Ethernet cables connected to the printer.



Right-click the Start button, then click 'Search'.

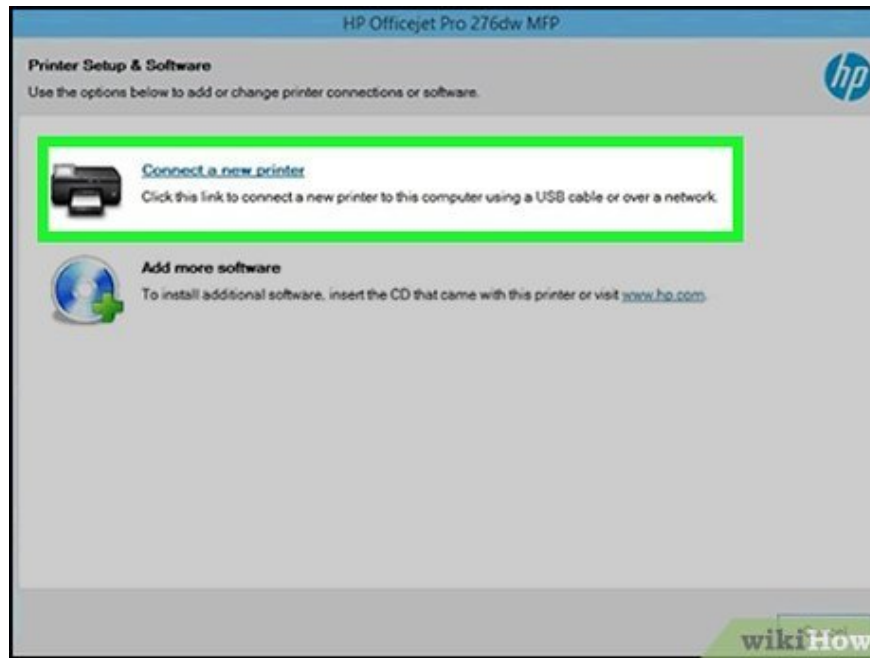


Type 'HP' in the search field, then click the printer icon. The HP printer software wizard opens on the screen.

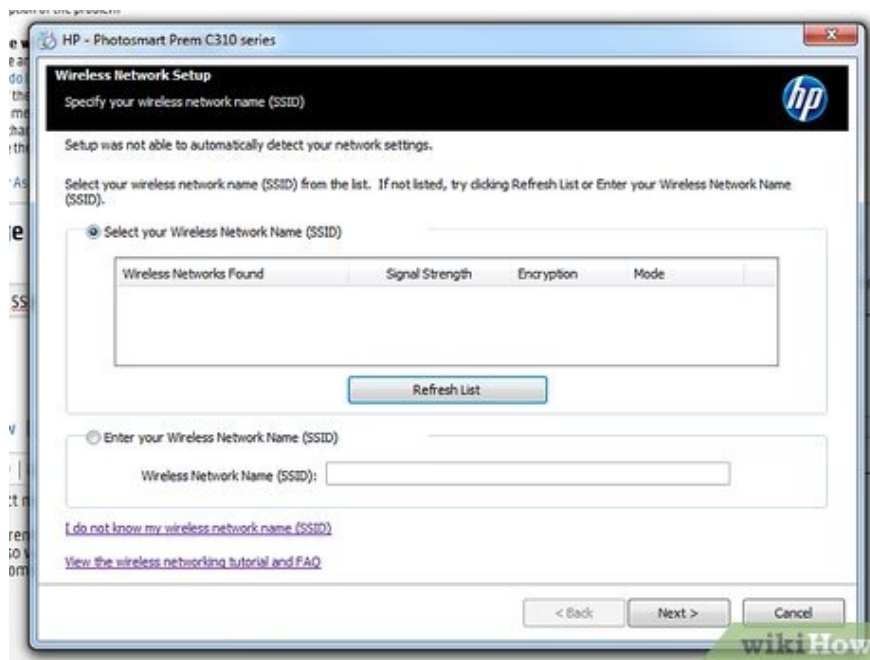
If this is your first time using the HP Deskjet 3050 printer on a Windows computer, visit the HP website at http://support.hp.com/us-en/drivers/selfservice/hp-deskjet-3050-all-in-one-printer-series-j610/4066450/model/4066451#Z7_3054ICK0K8UDA0AQC11TA930C7 and click 'Download' to install the latest software and drivers for the printer.



Click 'Utilities' then select 'Printer Setup and Software Selection '.

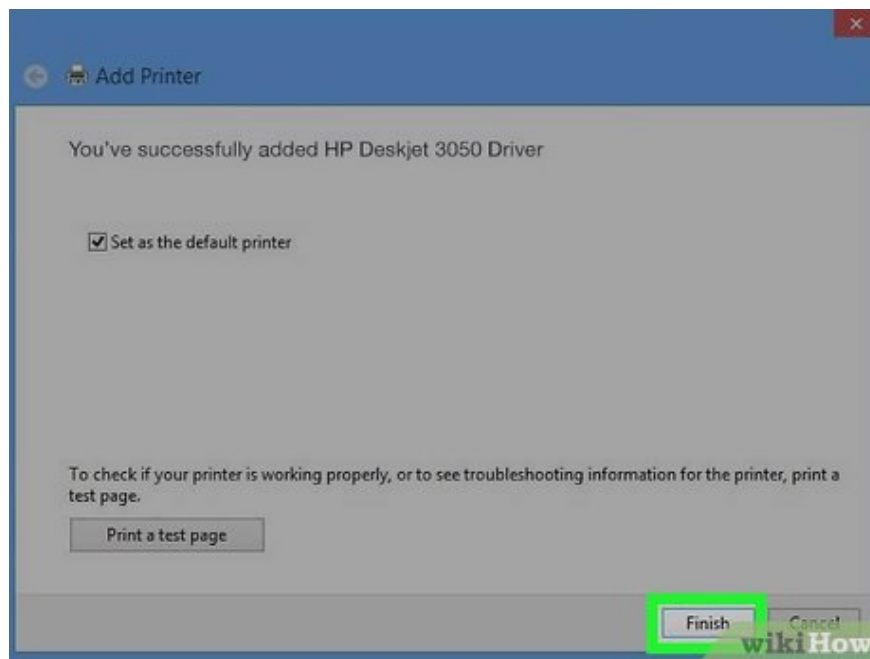


Select connect to a new printer on the computer.



Follow the on-screen instructions to connect the HP Deskjet 3050 printer to the wireless router. You will be asked to enter the SSID (network name) and security passphrase (or WEP/WPA key).

Check your wireless router to determine its SSID and WPA, or contact your Internet service provider for this information.

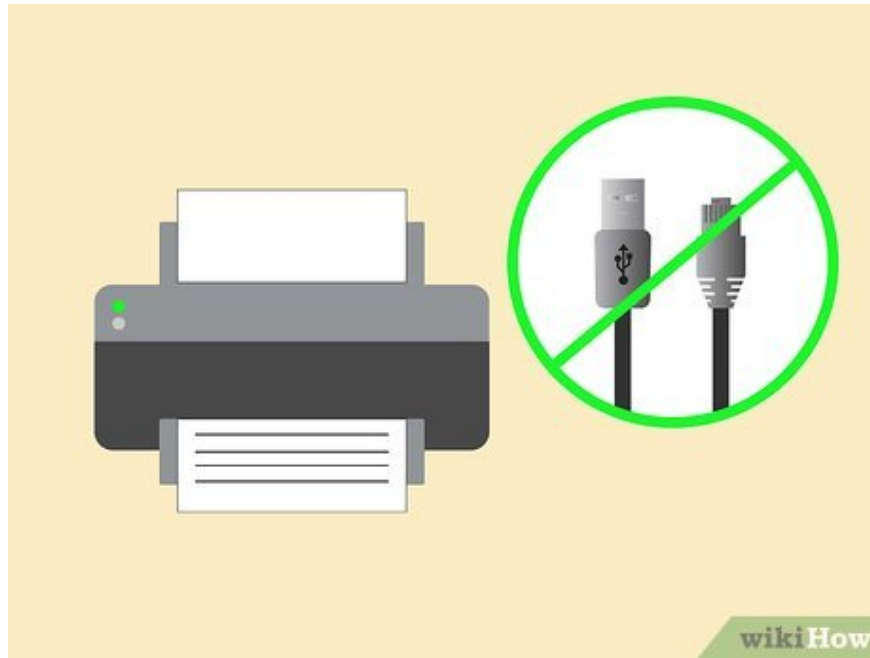


Click 'Finish' on the final screen of the printer setup wizard. The printer will be connected to the wireless router shortly.

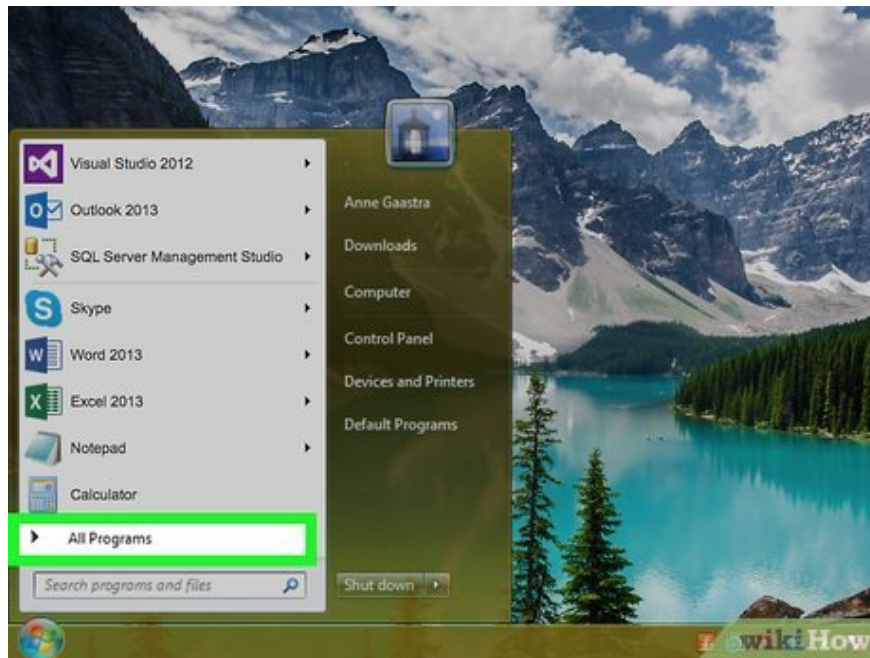
Windows 7 / Windows Vista / Windows XP



Check to make sure your computer, printer, and wireless router are turned on.



Unplug all USB or Ethernet cables connected to the printer.

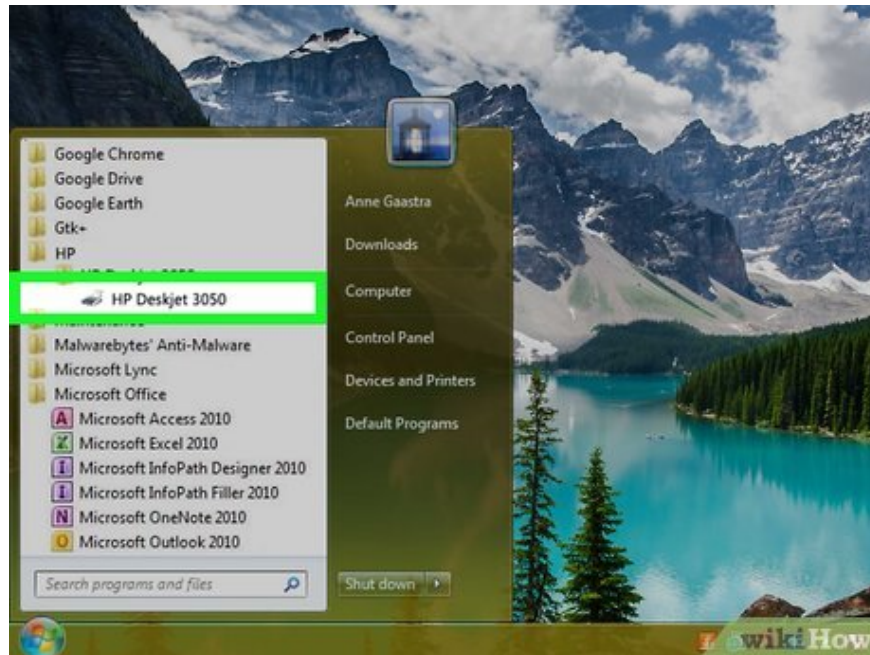


Click the 'Start' button and then hover over 'All Programs'.

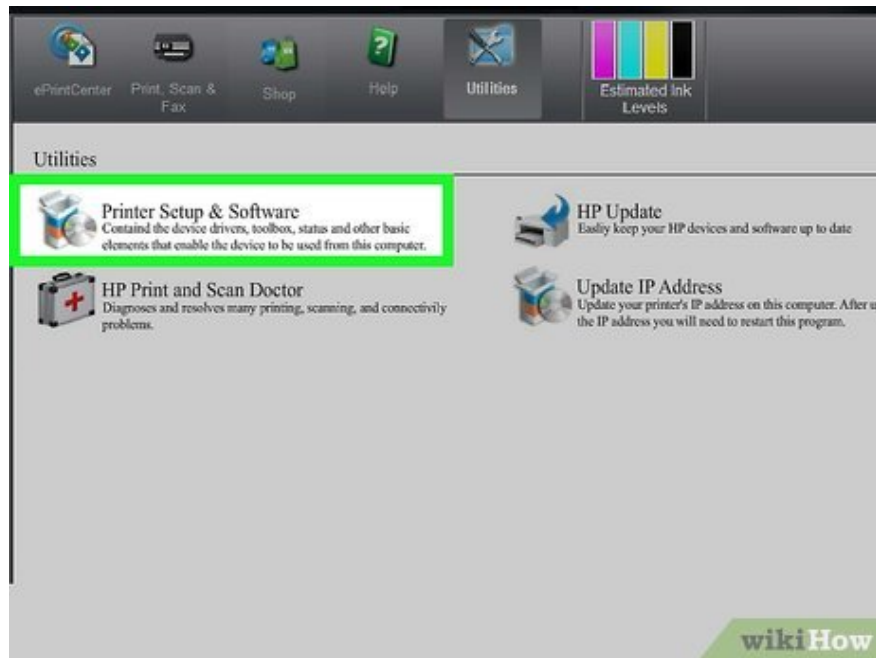


Click the 'HP' folder and then click the printer's folder.

If this is your first time using the HP Deskjet 3050 printer on a Windows computer, visit the HP website at http://support.hp.com/us-en/drivers/selfservice/hp-deskjet-3050-all-in-one-printer-series-j610/4066450/model/4066451#Z7_3054ICK0K8UDA0AQC11TA930C7 and click 'Download' to install the latest software and drivers for the printer.



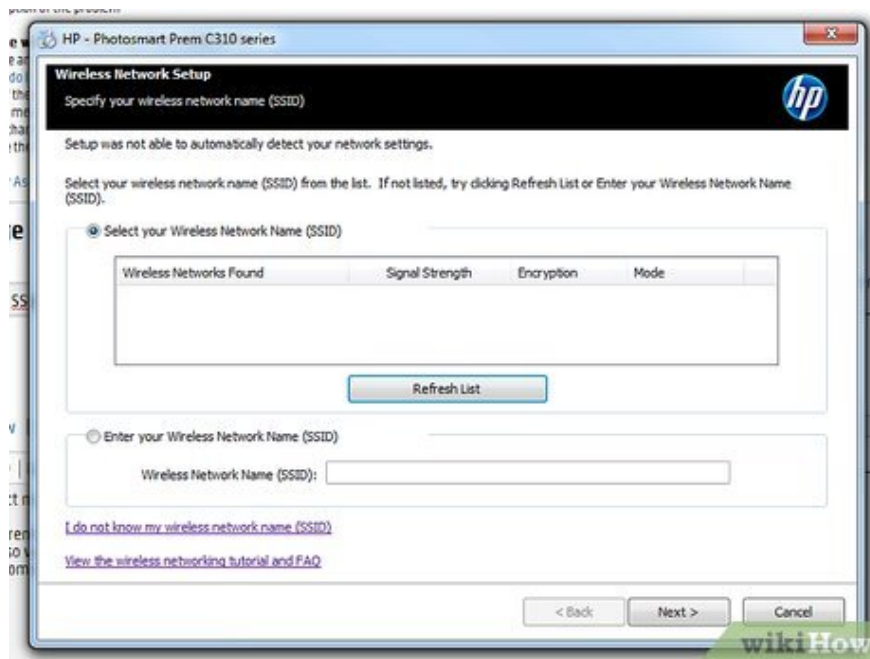
Click the printer icon. The HP printer software wizard opens on the screen.



Click 'Printer Setup and Software Selection '.

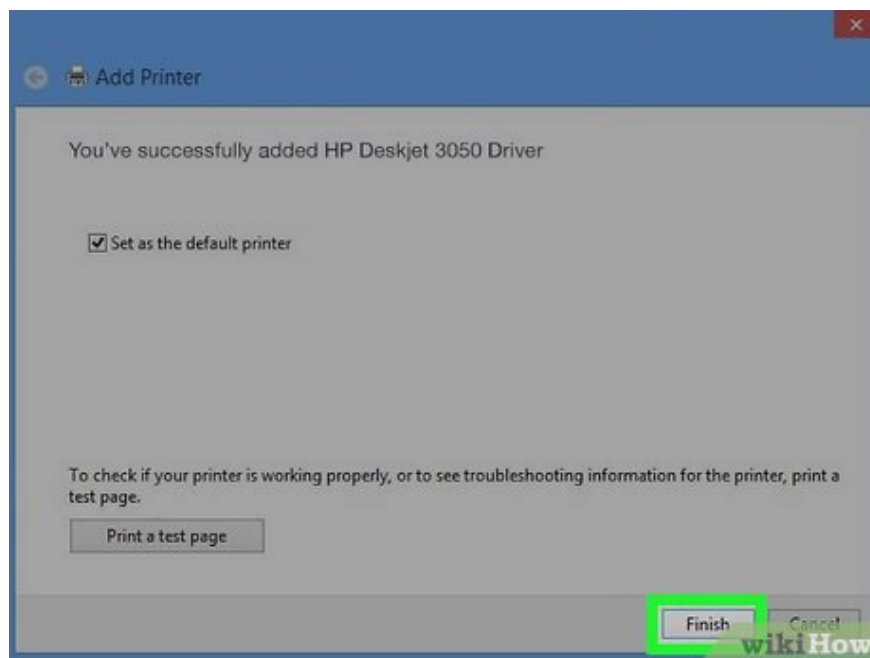


Select connect to a new printer on the computer.



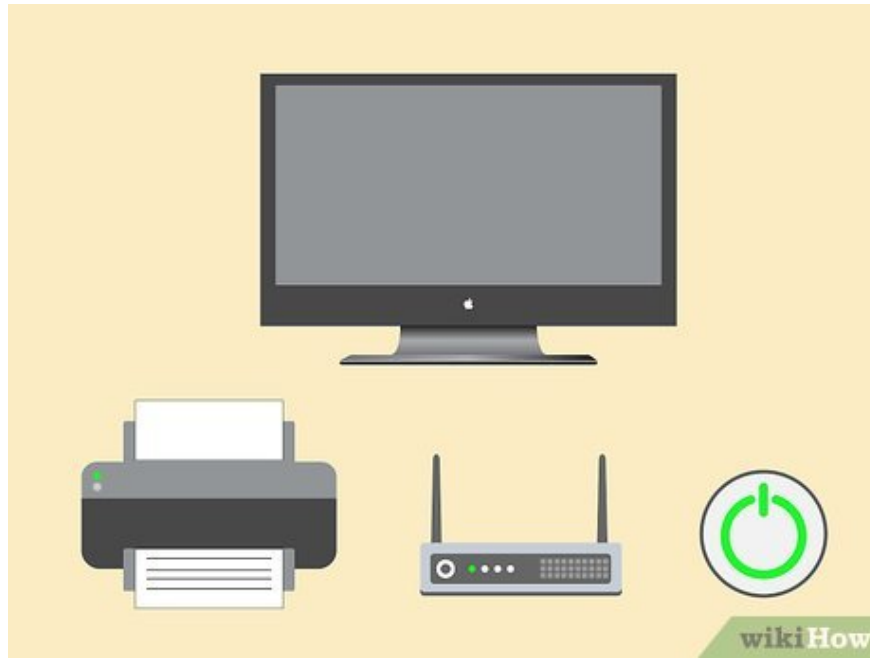
Follow the on-screen instructions to connect the HP Deskjet 3050 printer to the wireless router. You will be asked to enter the SSID (network name) and security passphrase (or WEP/WPA key).

Check your wireless router to determine its SSID and WPA, or contact your Internet service provider for this information.



Click 'Finish' on the final screen of the printer setup wizard. The printer will be connected to the wireless router shortly.

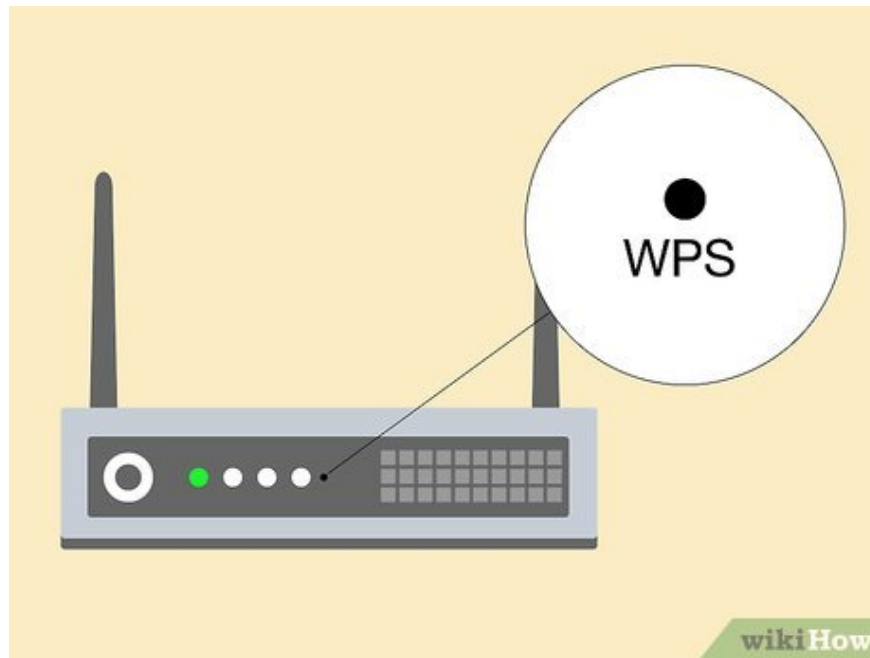
Mac OS X v10.9 Mavericks



Check to make sure your computer, printer, and wireless router are turned on.

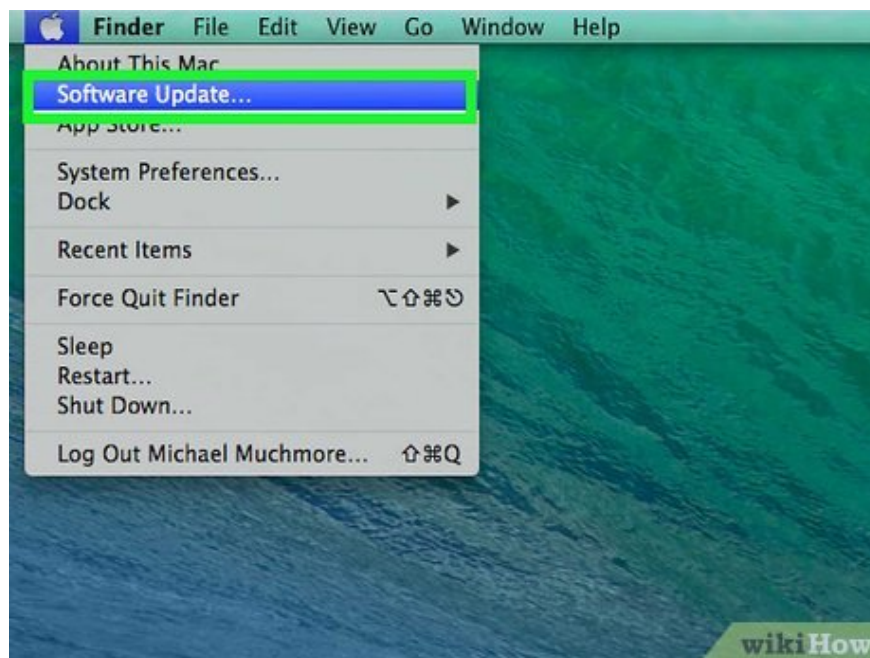


Hold down the 'Wireless' button on the printer control panel for at least 3 seconds or until the wireless light starts flashing.



Press and hold the 'WPS' button on the wireless router for a while. The printer will automatically find the wireless network and configure the connection.

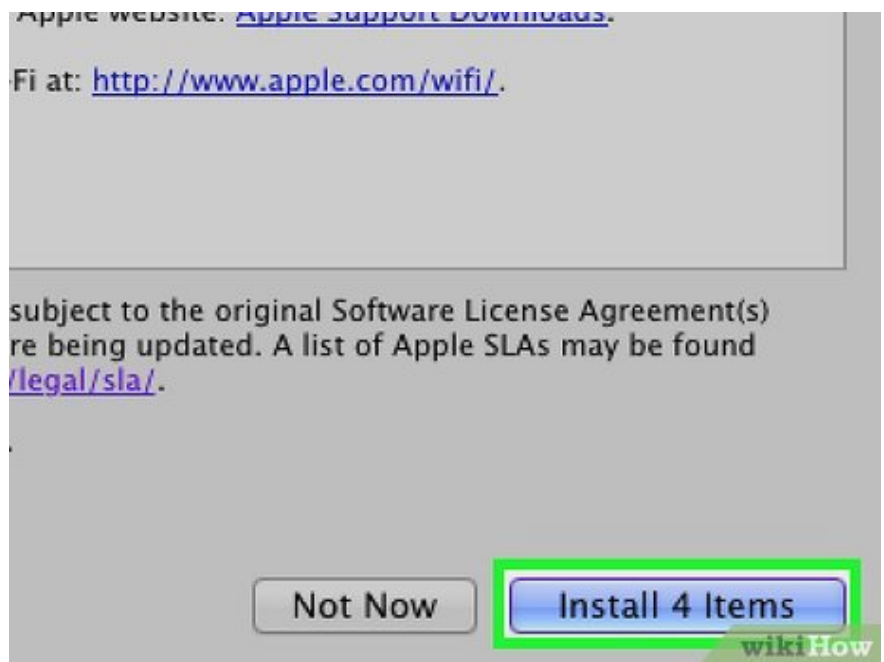
Perform the previous step about 2 minutes after pressing the 'Wireless' button on the printer to allow the printer to establish a connection to the router.



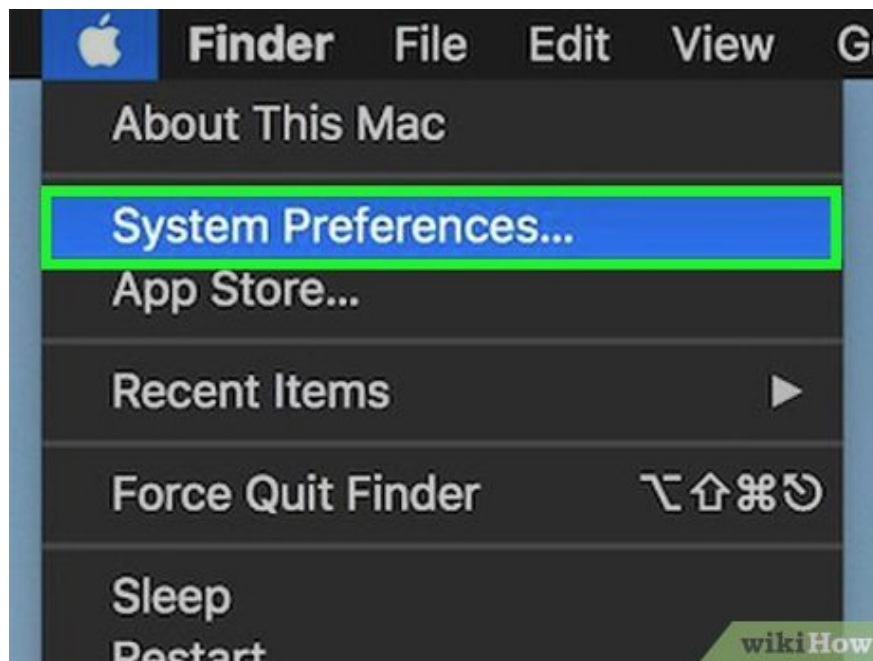
Click the Apple menu and select 'Software Update'.



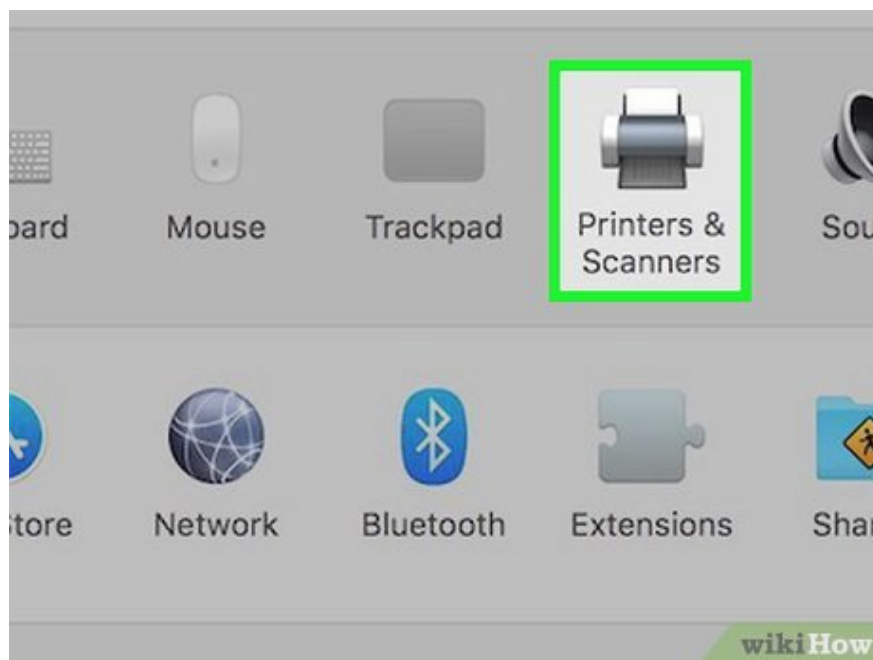
Click 'Show Details' and check the boxes next to available updates.



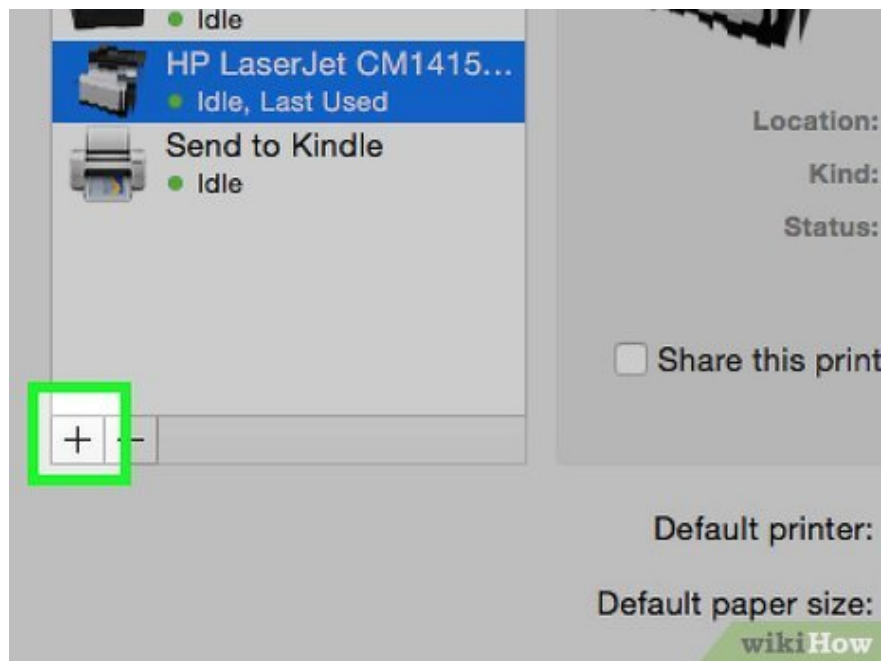
Click 'Install'. The computer will install any necessary updates to keep the operating system running efficiently when connected to the printer.



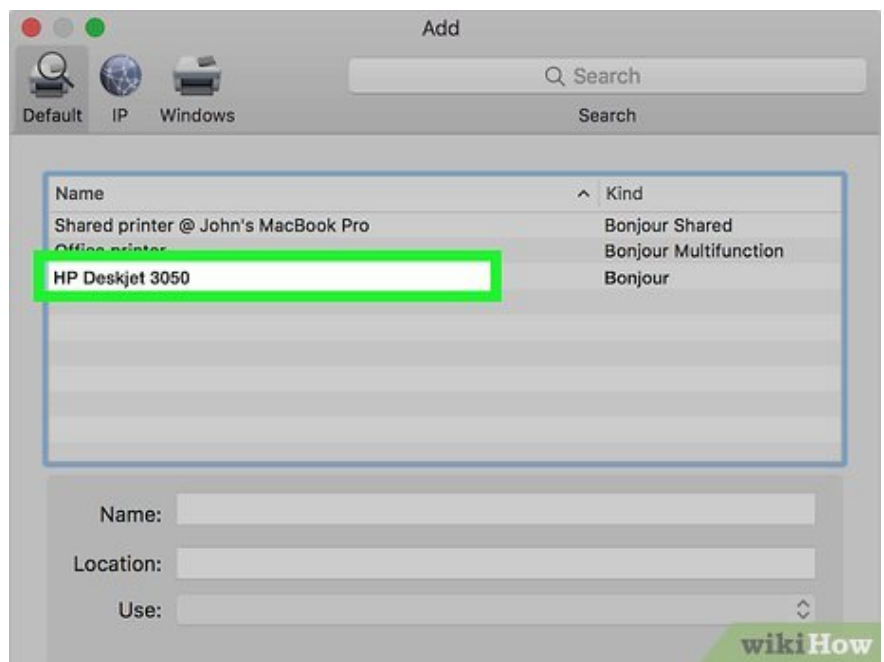
Click the Apple menu and select ' System Preferences'.



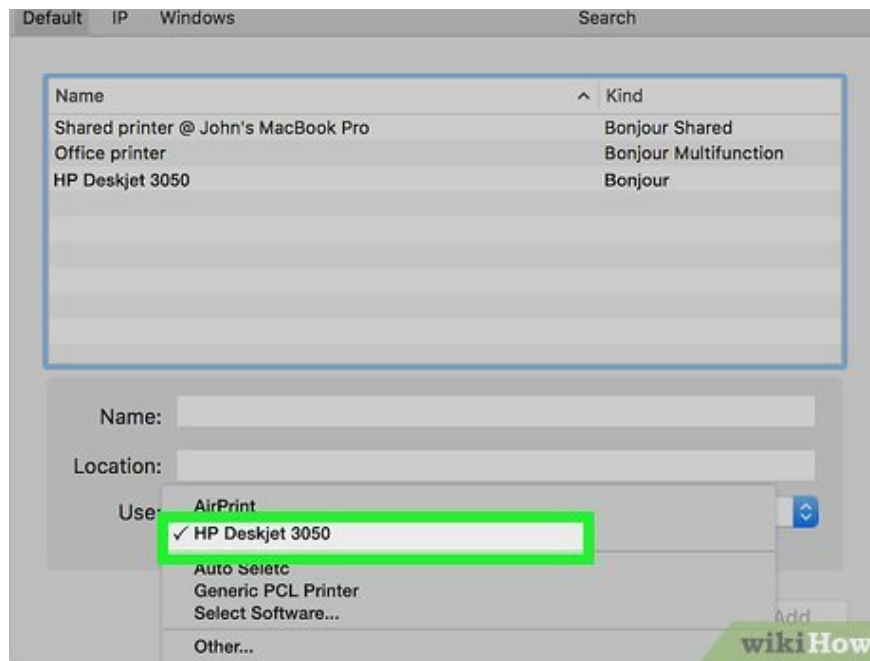
Click 'Printers and Scanners '.



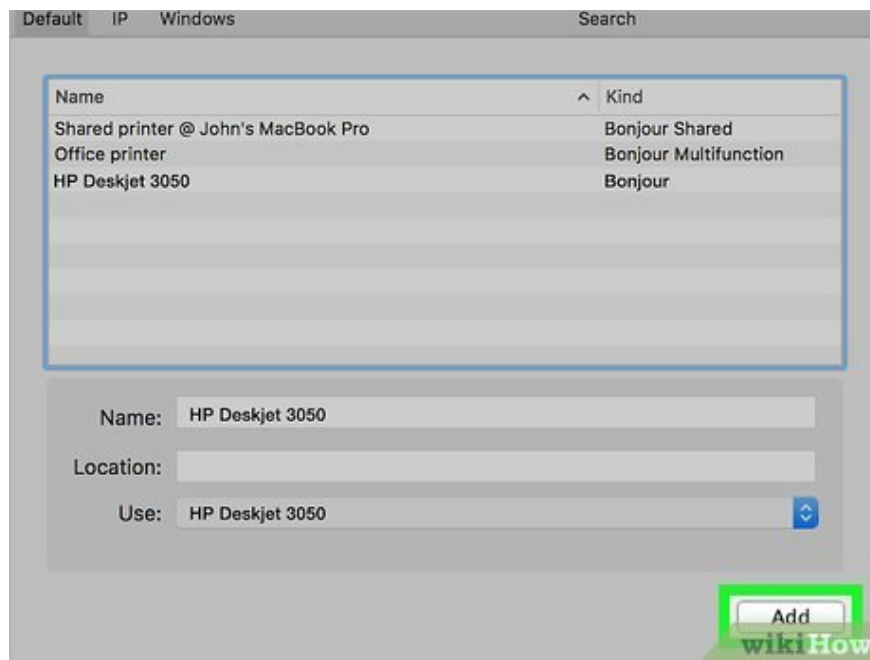
Click the plus sign in the lower left corner of the window and select 'Add Printer or Scanner'.



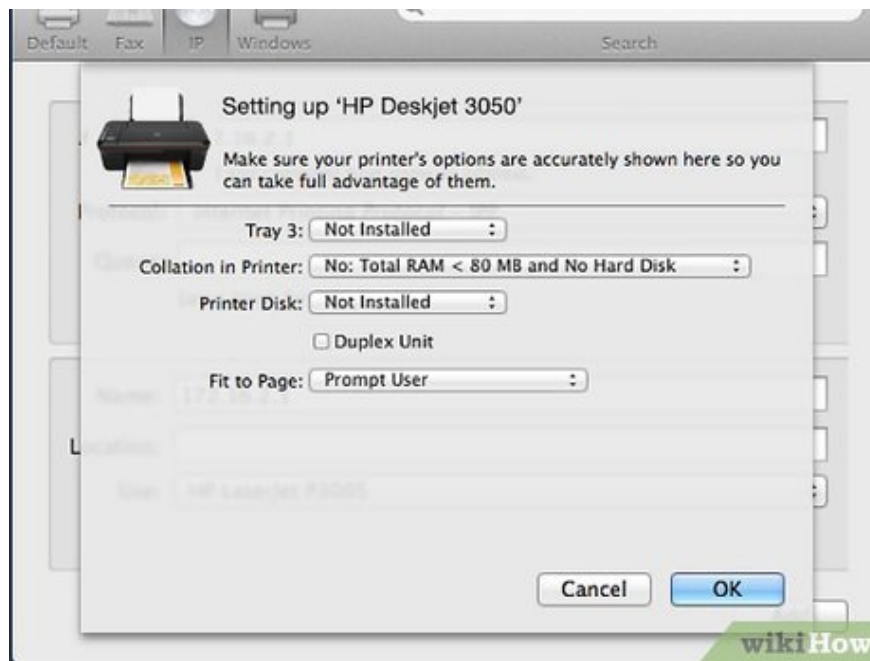
Click on the printer name located under the 'Name' category.



Check the 'Use' box and select the printer from the drop-down menu.

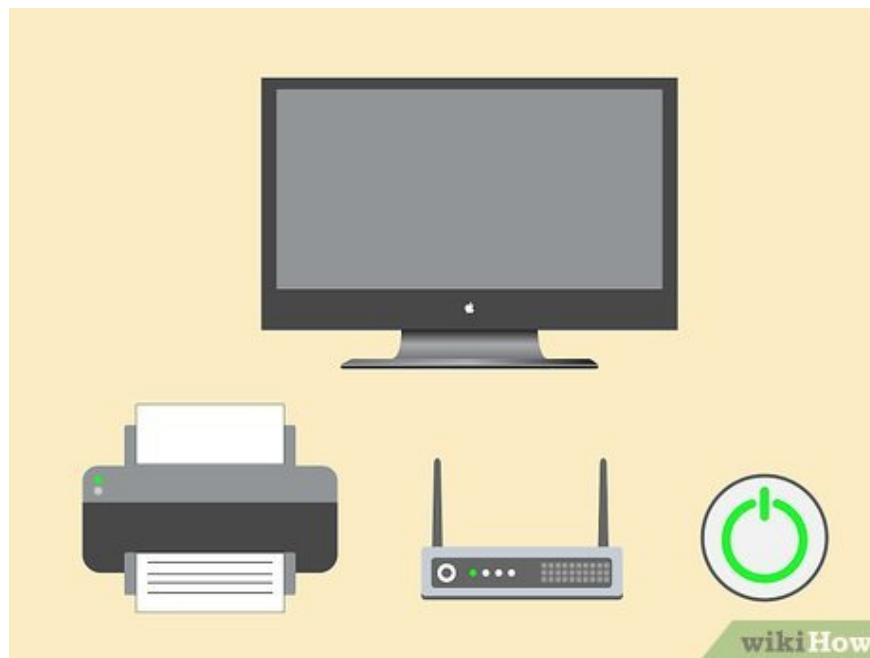


Click 'Add' then select 'Install' if prompted.

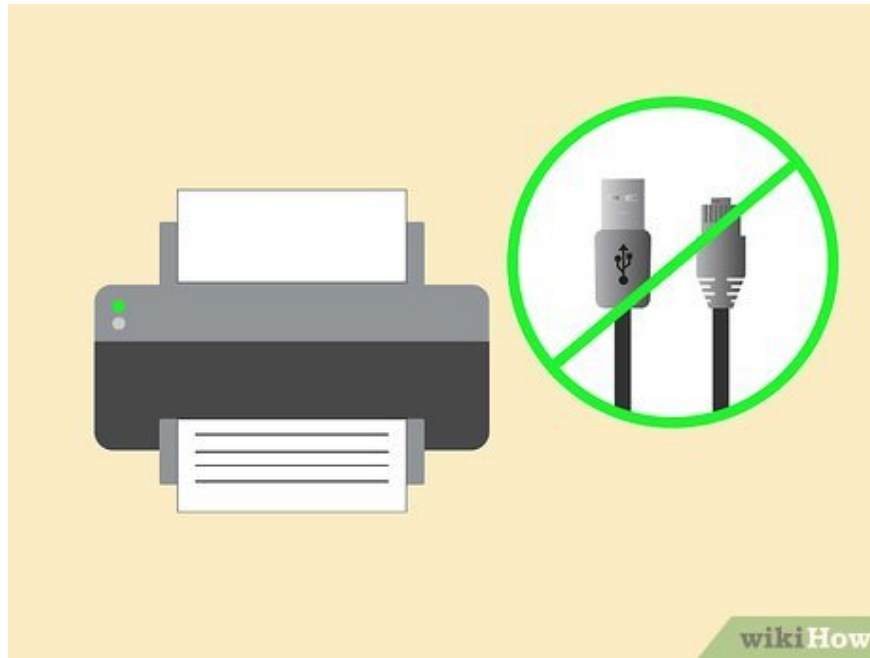


Follow the on-screen instructions to complete the installation process. So the HP Deskjet 3050 printer will be connected to the same wireless router of the computer.

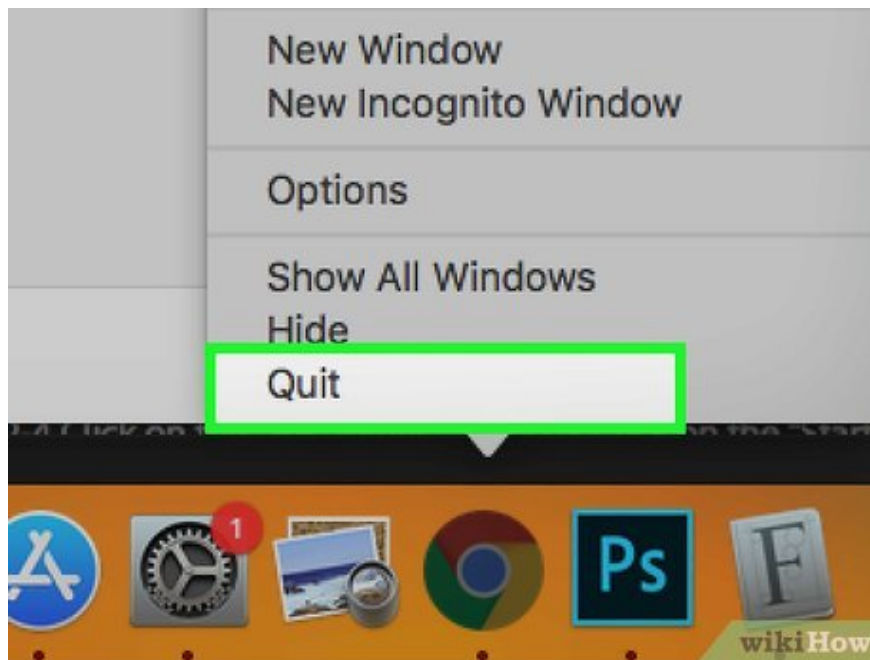
On Mac OS X v10.8 and earlier



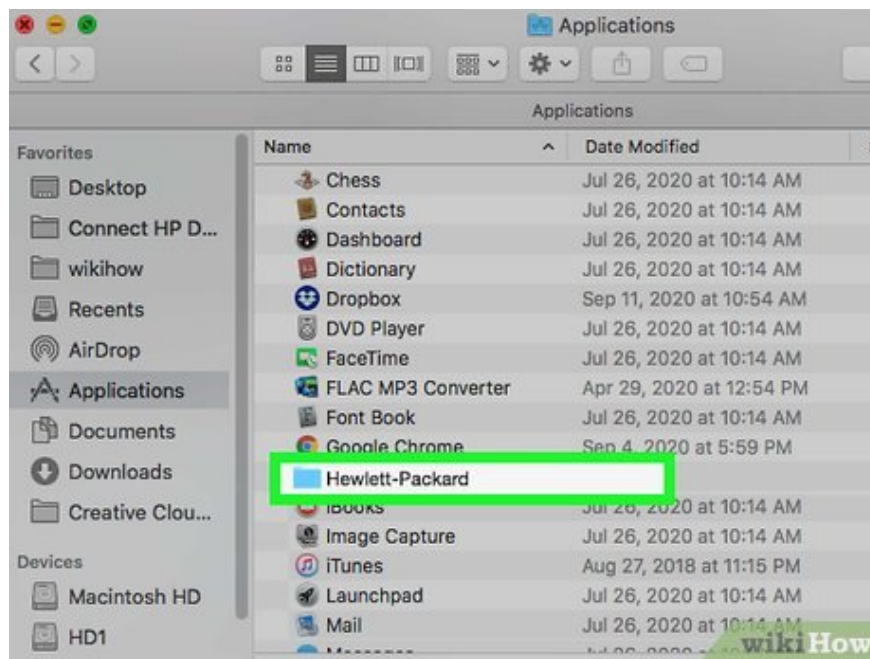
Check that your computer, wireless router, and HP Deskjet printer are turned on.



Unplug all USB or Ethernet cables connected to the printer.

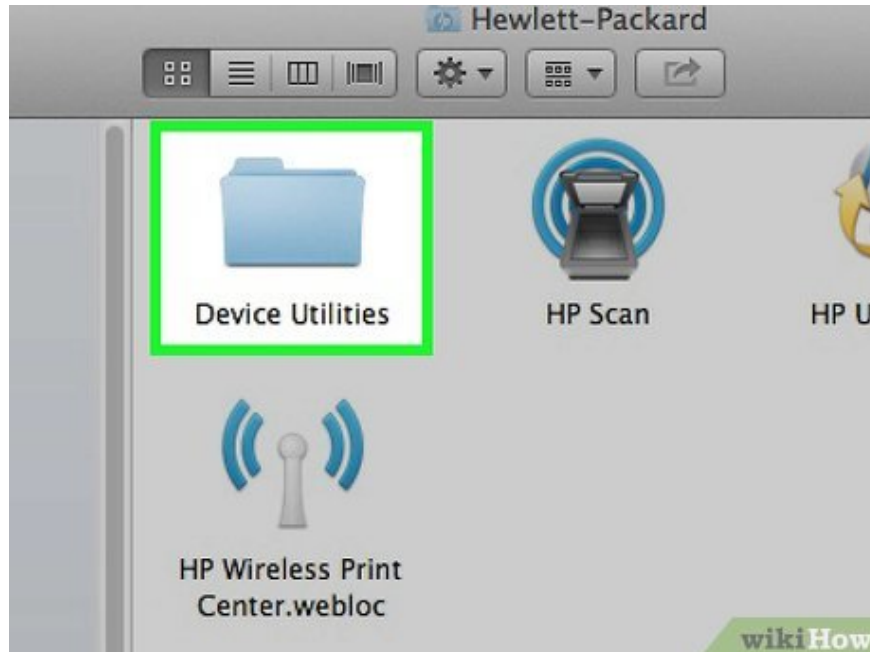


Close any programs or applications running on your computer.

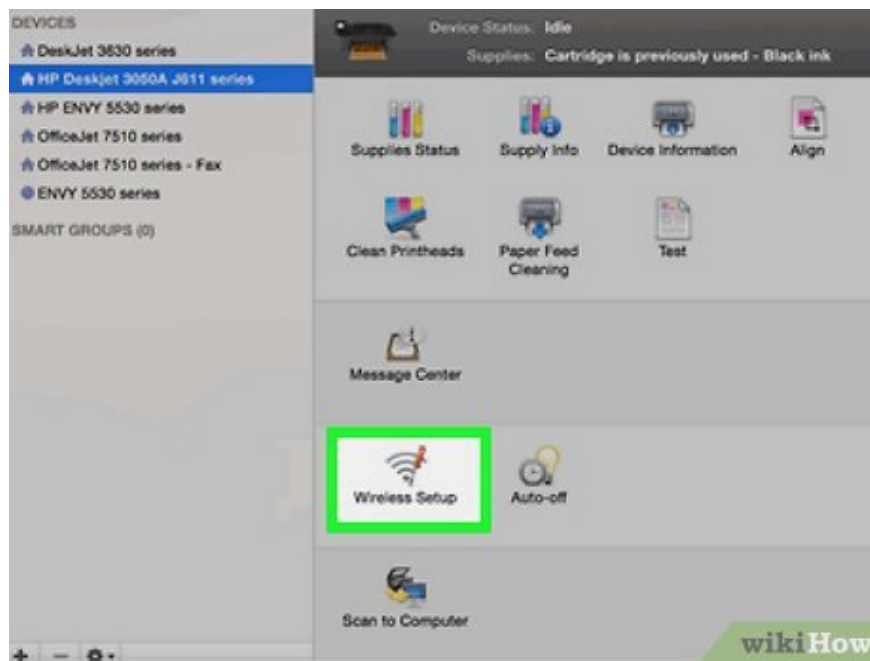


Open the Applications folder and double-click the HP folder.

If this is your first time using the HP Deskjet 3050 printer on your Mac, visit the HP website at http://support.hp.com/us-en/drivers/selfservice/hp-deskjet-3050-all-in-one-printer-series-j610/4066450/model/4066451#Z7_3054ICK0K8UDA0AQC11TA930C7 and click 'Download' to install the latest software and drivers for the printer.



Click 'Device Utilities' and then double-click 'HP Setup Assistant'.

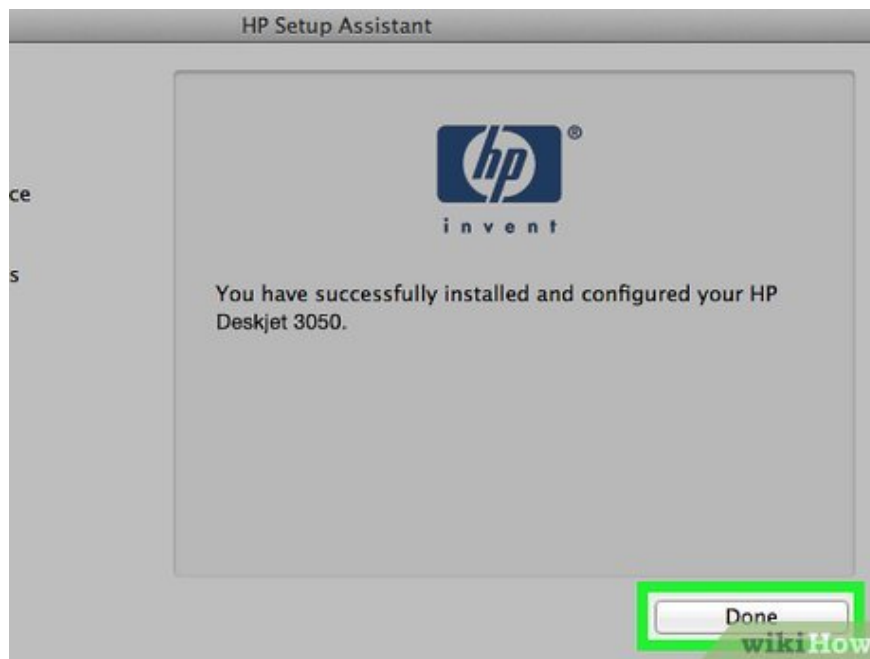


Select to connect the printer to the computer via a wireless network.



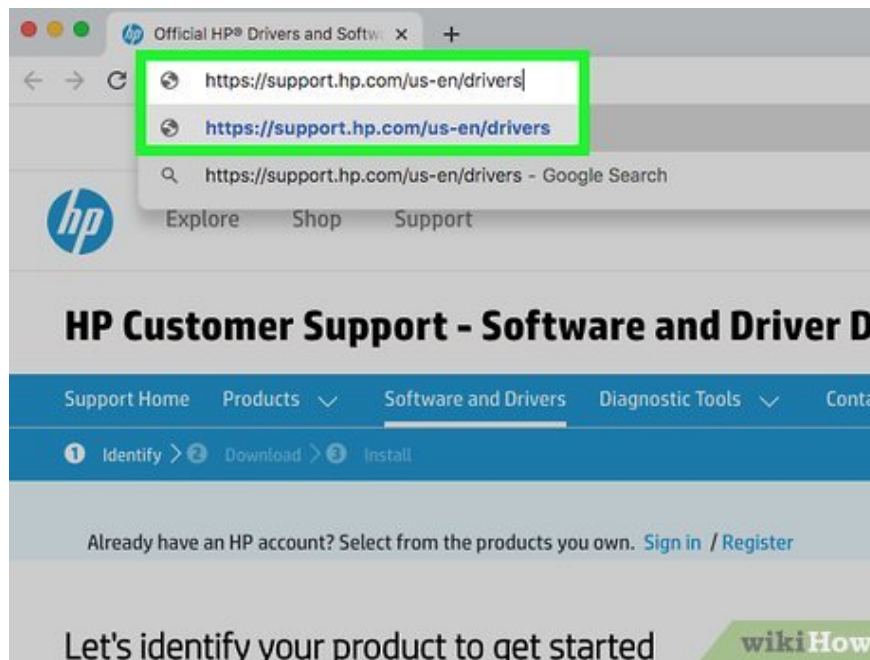
Follow the on-screen instructions to connect the HP Deskjet 3050 printer to the wireless router. You will be asked to enter the SSID (network name) and security passphrase (or WEP/WPA key).

Check your wireless router to determine its SSID and WPA, or contact your Internet service provider for this information.



Click 'Done' or 'Finish' on the final screen of the HP Setup Assistant. The printer will connect to the wireless router immediately.

Troubleshoot



Download the latest HP Deskjet 3050 software and drivers if your computer cannot detect or connect to the printer. In some cases, it's possible that the printer software on your PC is out of date.

Visit the HP website at <http://support.hp.com/us-en/drivers> and enter your printer model to view the latest software and drivers.



Edit your printer's wireless settings if you recently started using a new router or network. In some cases, the printer may not automatically connect to the network or router.

Press the 'Wireless' button on the printer and select 'Wireless Settings'.

Select 'WPS' then 'PIN.'

Enter your router's password and then select save changes.

You finished reading the article "**How to Connect HP Deskjet 3050 to a Wireless Router**" edited by the [TipsMake](#) team. We hope this article has provided you with many useful tech tips and tricks. You can search for similar articles on tips and guides. Thank you for reading and for following us regularly.