

How to Connect Headphones to Computer

Headphones are often used for playing games or chatting online. Today's TipsMake will show you how to connect a wired headset or Bluetooth headset to your computer and use it for both input and output audio.

With wired headphones



Check the connection type of the headset. Depending on the type of headset, you will see one or more of the following wires:

3.5 mm audio out – This is the standard audio jack on most headphones and speaker systems. The 3.5 mm jack is used to plug into the headphone port and is usually green. Usually, the 3.5 mm audio output port also supports sound recording (such as with a microphone).

3.5 mm microphone – Some headsets have a separate 3.5 mm jack for audio recording. This Jack is usually pink.

USB – The USB connector is flat rectangular and plugs into a USB port on the computer.



Locate your computer's audio input. Laptops usually have 3.5 mm audio output ports located on the left, right or front of the chassis, while on desktop computers these ports are located on the front or back of the CPU case. The microphone port is usually pink, and the headphone port is usually green.

On laptops with uncolored connection ports, the audio input will have a headphone image next to it, and the microphone input will have a microphone image.

The location of USB ports on each computer is different, but will usually be near the audio ports.



Plug the headset into the computer. Plug the headset cable into the appropriate location on the computer.

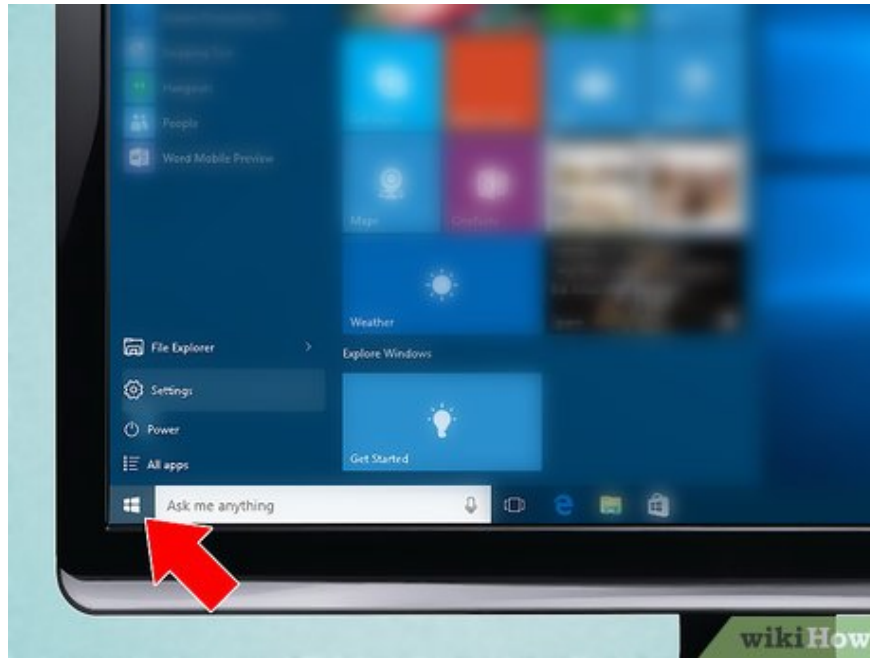


Plug in the headset (if necessary). Most headsets charge via a USB port, however some headsets require an additional external power source. In this case, you need to plug the headset in (for example from a wall outlet). Once done, your headset is ready to be set up in Windows settings.

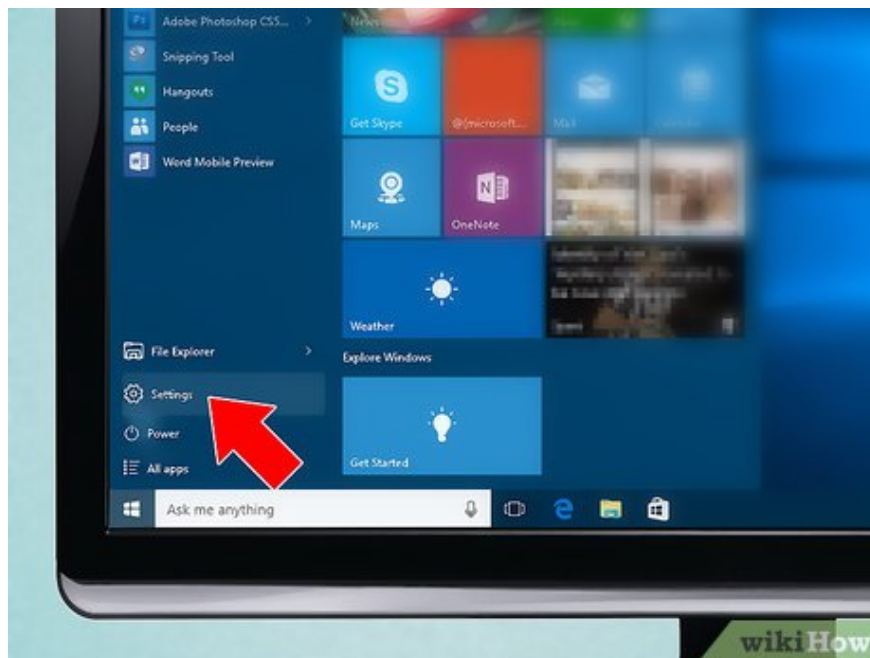
With Bluetooth headset



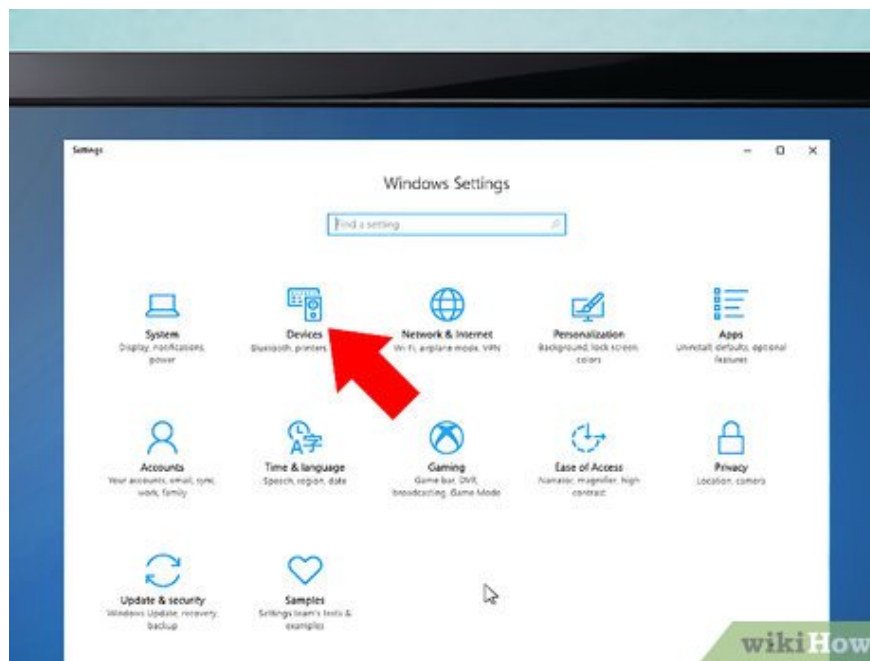
Turn on the headset. Press the power button on the headset to turn the device on. If the headset is not fully charged, you may need to plug it in to make sure the device doesn't turn off during connection.



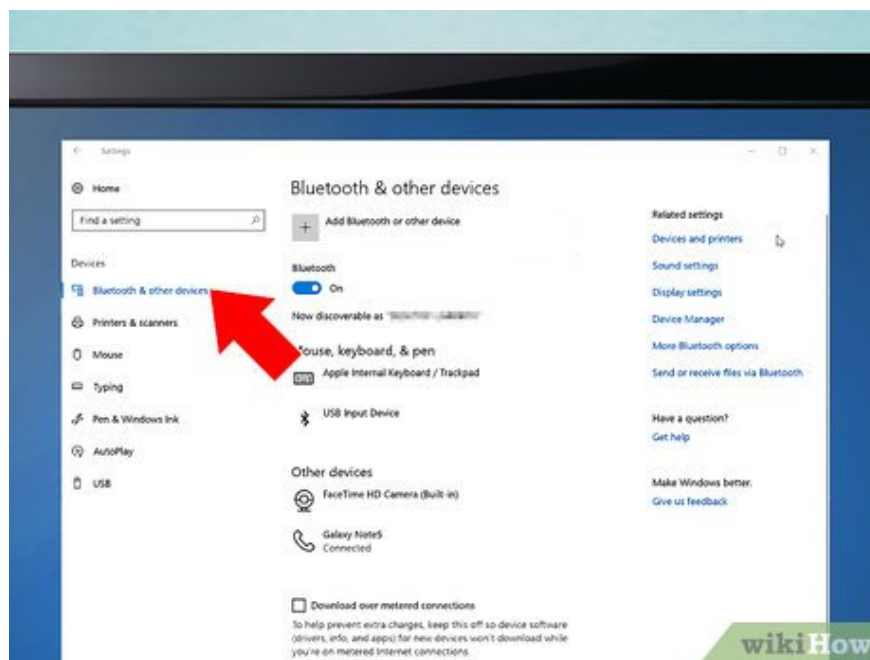
Open Start . Click the Windows icon in the lower left corner of the screen. The Start window will appear.



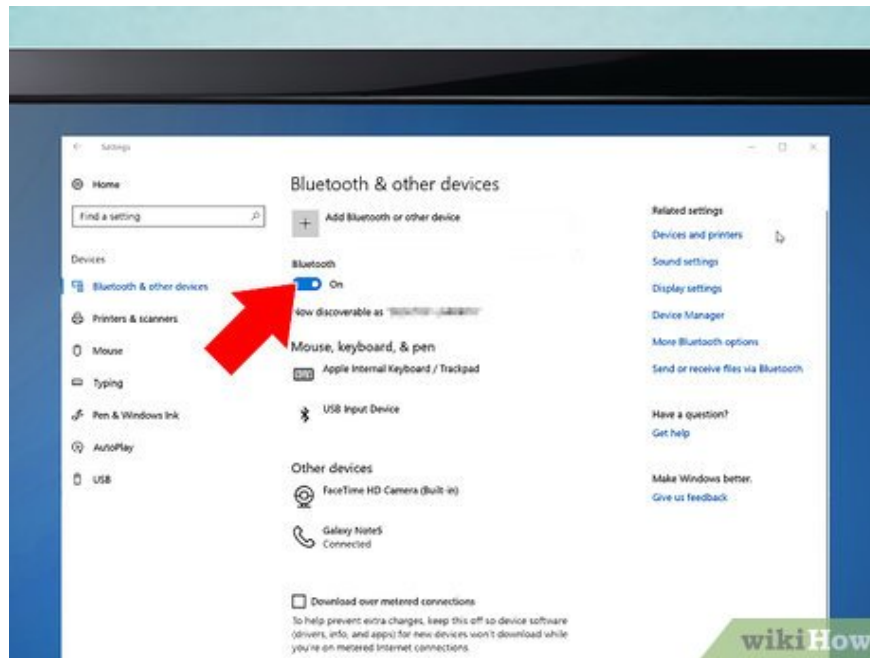
Open Settings. Click the gear icon in the bottom left of the Start window.



Click **Devices** . The peripheral device image option is in the middle of the Settings page.

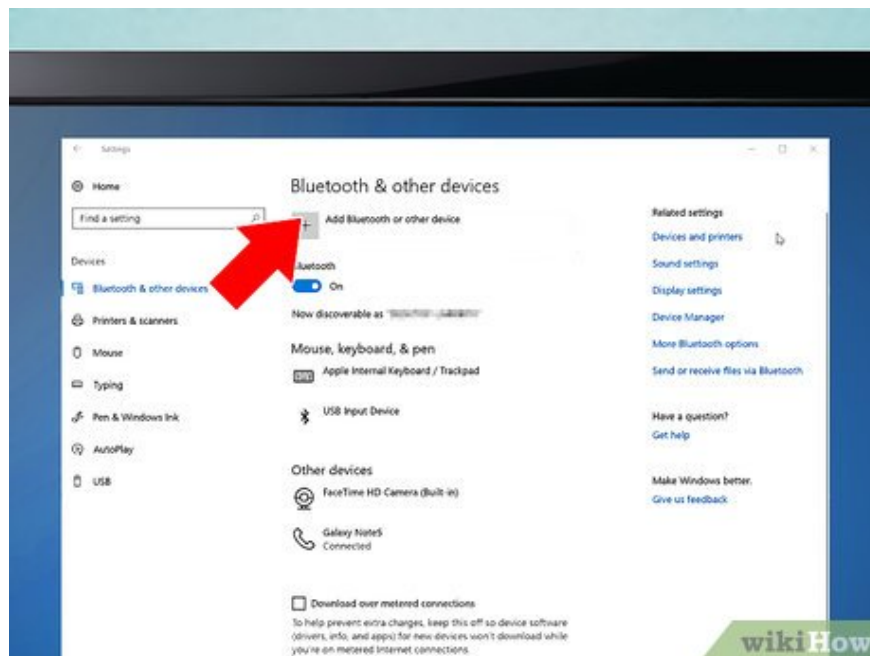


Click **Bluetooth & other devices** . This tab is located in the upper left of the Devices page.

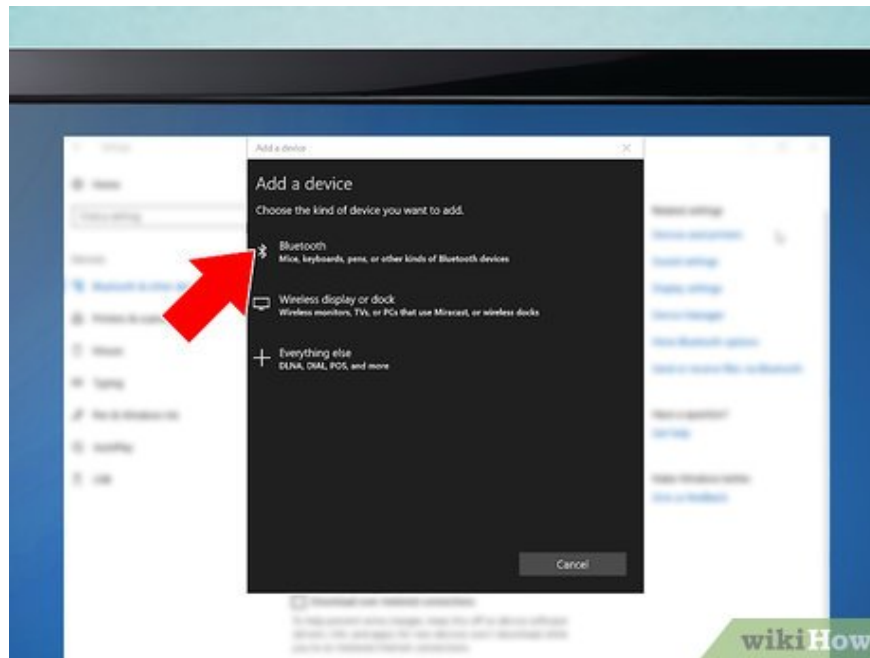


Click the Bluetooth switch if the Bluetooth feature is not enabled. This button is below the "Bluetooth" heading near the top of the page. Then, the Bluetooth function will switch to On.

If the Bluetooth switch is blue (or your computer's default color), Bluetooth is currently on.



Click Add Bluetooth or other device . Tasks are at the top of the page. The Bluetooth menu will then open.

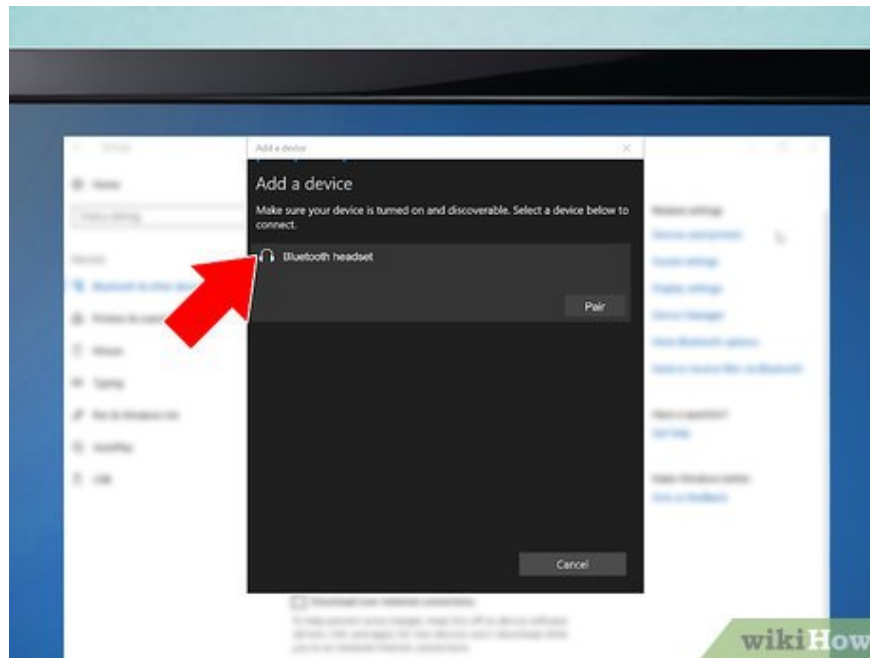


Click Bluetooth at the top of the menu that appears.



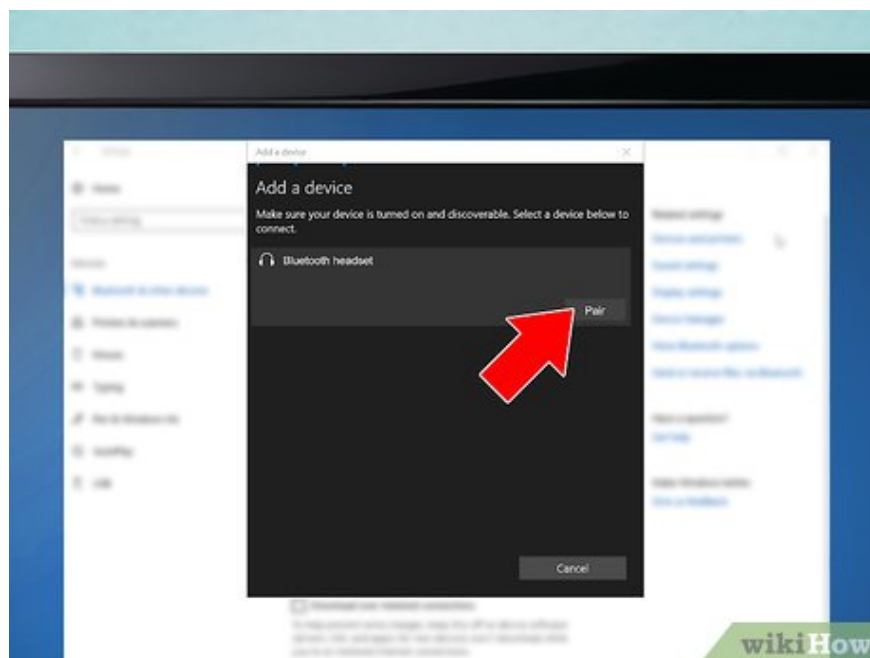
Click the pairing button on the headset. The location of this button depends on the headset model. Usually, above (or next to) the pairing button is a Bluetooth icon.

Refer to your headset's manual if you can't find the pairing button.



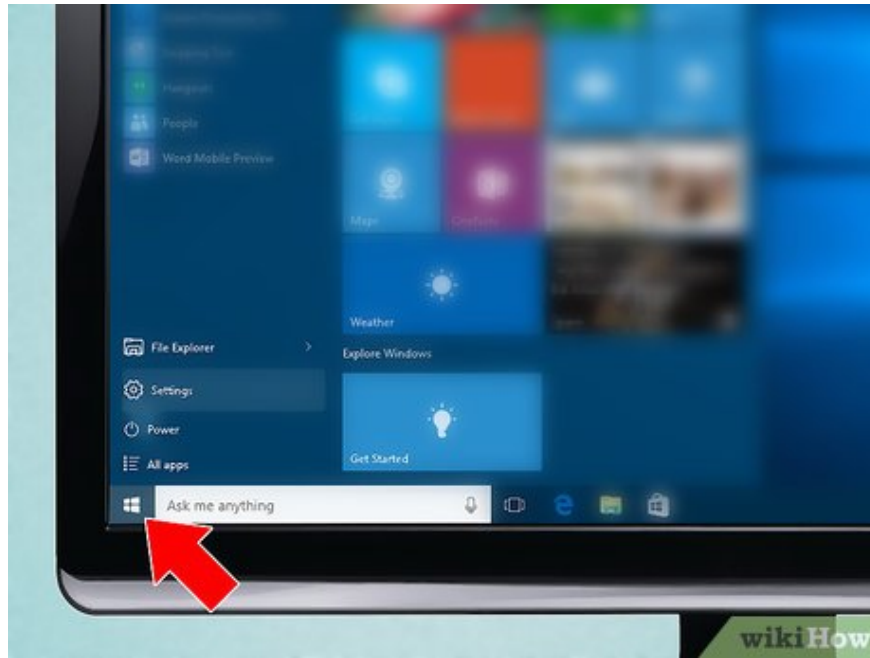
Click the name of the headset. The device name will appear in the Bluetooth menu after a few seconds. The headphone name is usually a combination of the manufacturer's name and the headphone model number.

If the headset doesn't appear in the Bluetooth menu, turn off Bluetooth, then press the pairing button on the headset and turn Bluetooth back on.

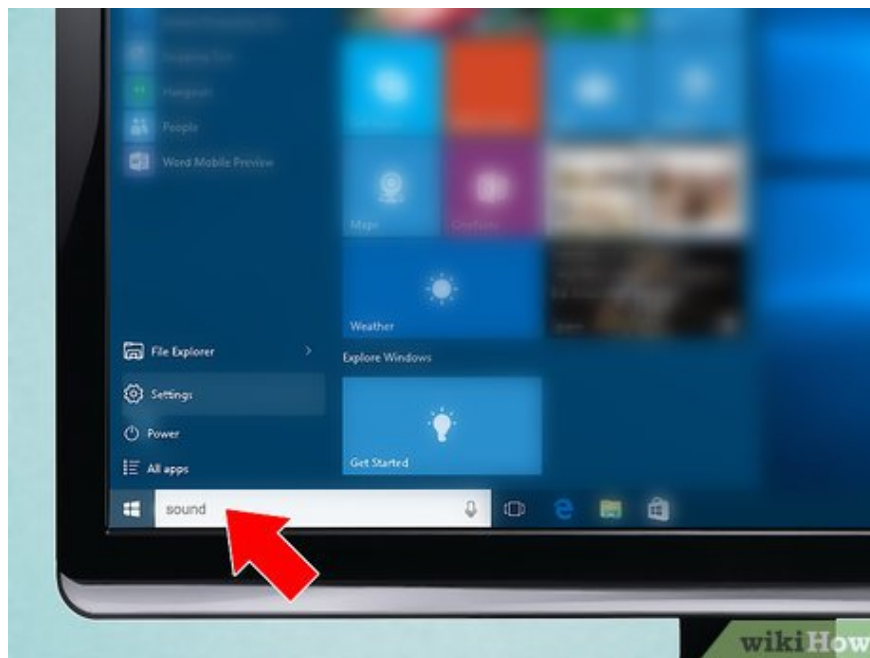


Click Pair below the headset name. The headset will begin pairing with the computer. Once connected, your headset can be set up in Windows settings.

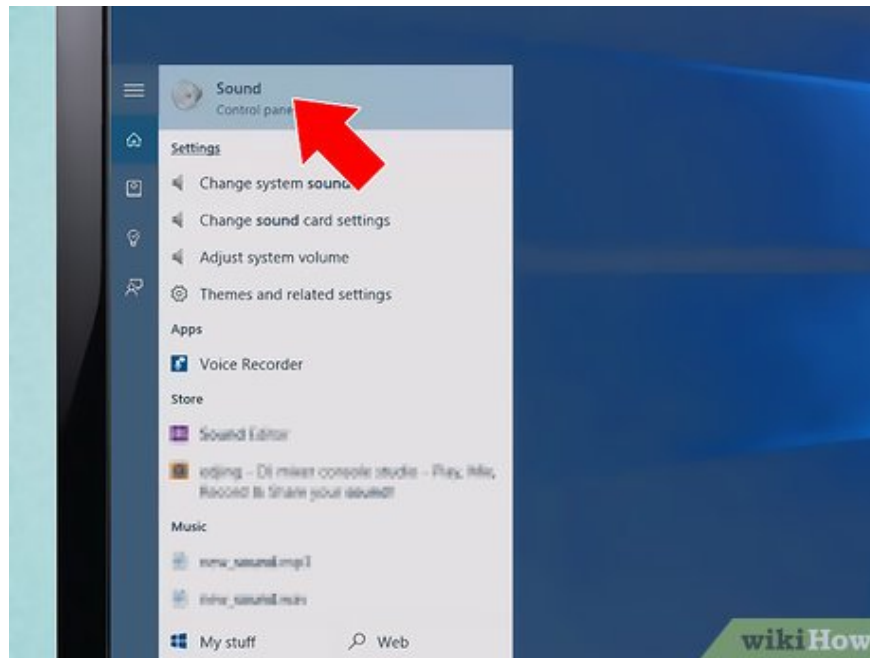
Change Windows Sound settings



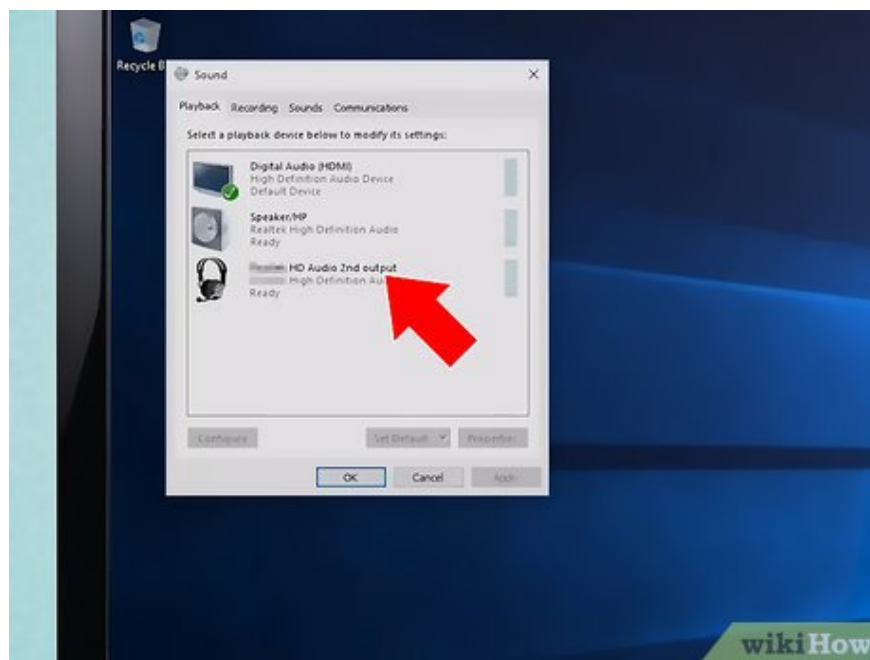
Open Start . Click the Windows icon in the lower left corner of the screen. The Start window will appear.



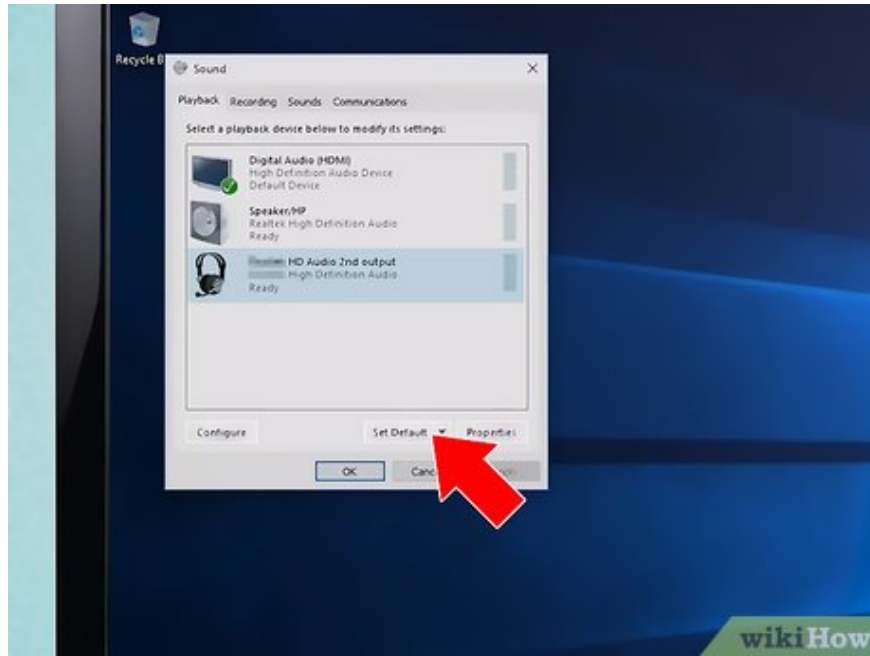
Enter soundStart. The Sound sound setup application will be found on the computer.



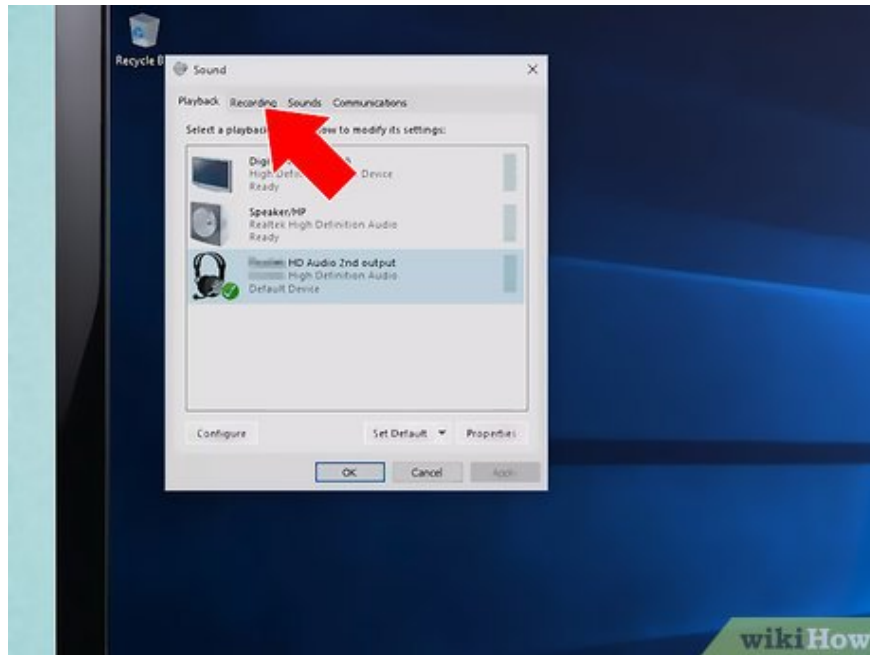
Click Sound . The speaker-shaped application is at the top of the Start window.



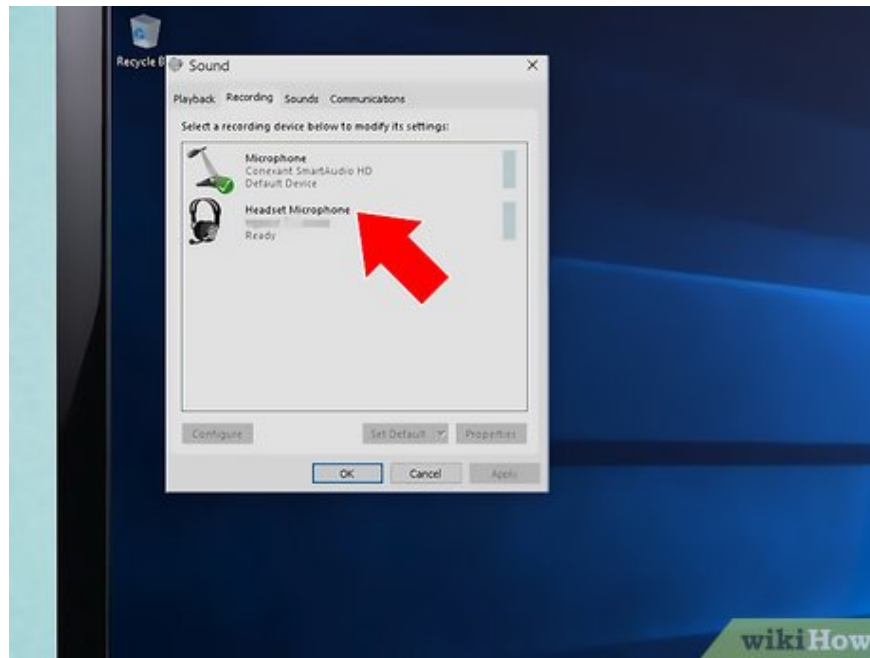
Click the headset's name in the middle of the window.



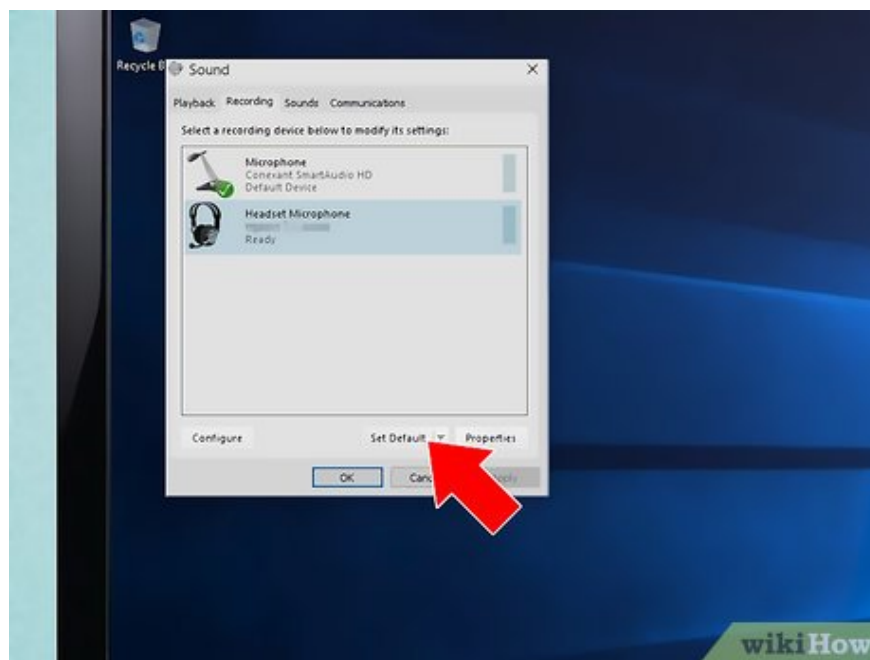
Click Set Default . Options at the bottom left of the window. Your headphones will become the default audio output option when connected.



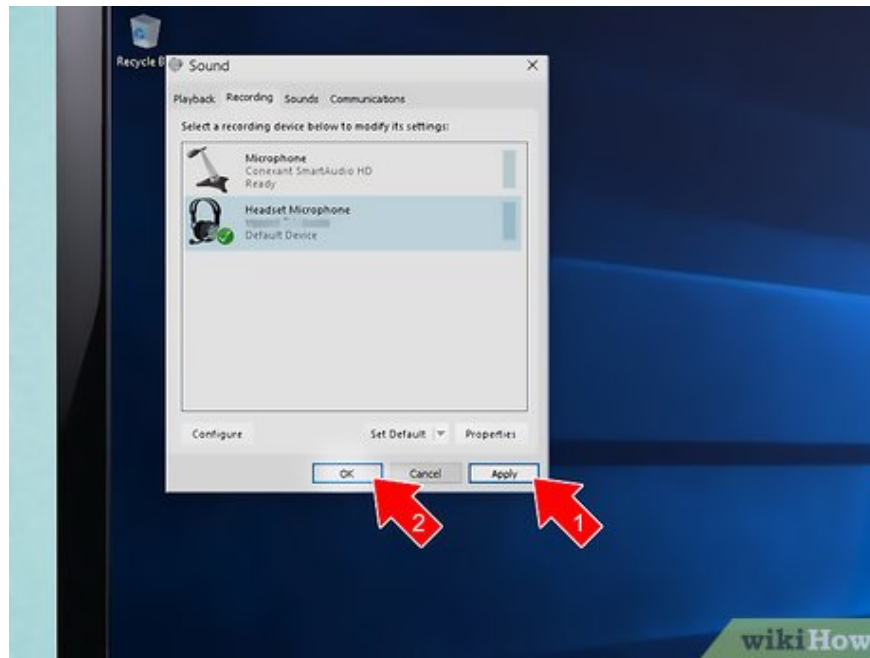
Click the Recording tab . The option is at the top of the Sound window.



Click the headset's name in the middle of the window.



Click Set Default . Your headset becomes the default audio input option (such as a microphone) when connected to your computer.



Click Apply and then click OK . Your settings will be saved. So you can start using headphones on your computer.

You finished reading the article "**How to Connect Headphones to Computer**" edited by the [TipsMake](#) team. We hope this article has provided you with many useful tech tips and tricks. You can search for similar articles on tips and guides. Thank you for reading and for following us regularly.