

How to connect Google Home to Chromecast

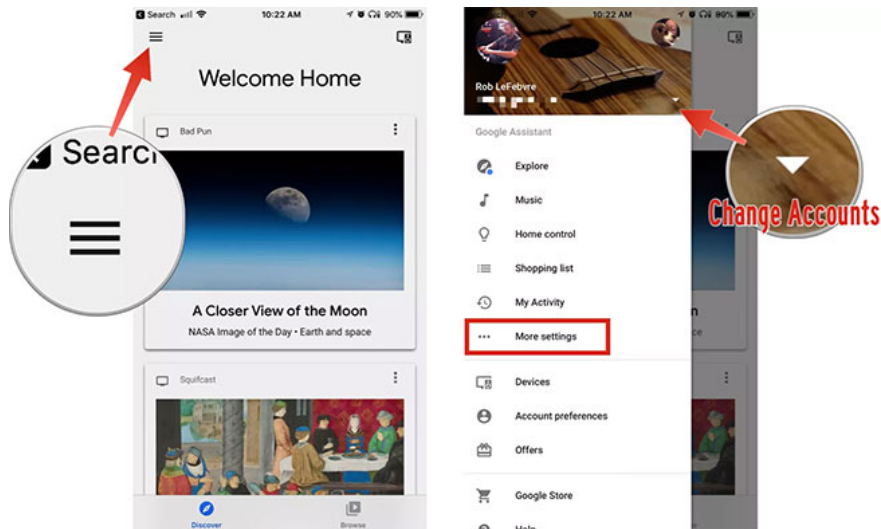
To connect Google Home to Chromecast, all you need to do is plug the Google Chromecast into the HDMI port available on your TV and the Google Home app (on iOS or Android) for Chromecast to communicate.

To connect Google Home to Chromecast, all you need to do is plug the Google Chromecast into the HDMI port available on your TV and the Google Home app (on iOS or Android) for Chromecast to communicate.

Note:

1. Before you begin, you'll need to make sure your Chromecast is set up to work with WiFi networks and TVs.
2. You will also need to ensure that your Google Home device is set up on the same network.

Connect Chromecast to Google Home



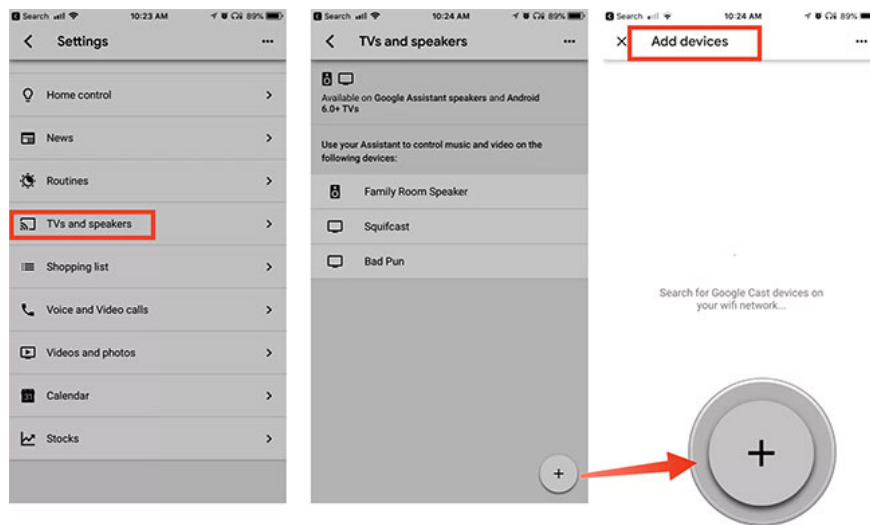
Connect Chromecast to Google Home

Now you'll want to make sure your Google Home device (Mini or Max) can connect to your Chromecast.

First, connect your Android phone or iPhone to the same WiFi network as Google Home and Chromecast. Then launch the Google Home application on the device.

In the top left corner of the Home app screen, tap the **Menu** icon . Make sure you use the same Google account you set up on your Google Home smart speaker. You can switch accounts with a tap on the triangle down to the right of the account name.

Next, click **More settings** , then select **TVs and Speakers** . You will see a list of all currently connected devices. To add a new one (or the first one), click the large + icon at the bottom right of the screen. If you've set up your Chromecast correctly, you'll see your new device in the list of results.



Add device to the list

To add it to Google Home, just click the checkbox next to the device name, then click **Add**.

You are now set up to start using the Google Home app for Chromecast.

Set up video apps for Chromecast and Google Home

Some video services, like Netflix, CBS All Access and HBO Now, require you to sign in before you can use them with Google Home and Chromecast. Here is a list taken from Google's help page:

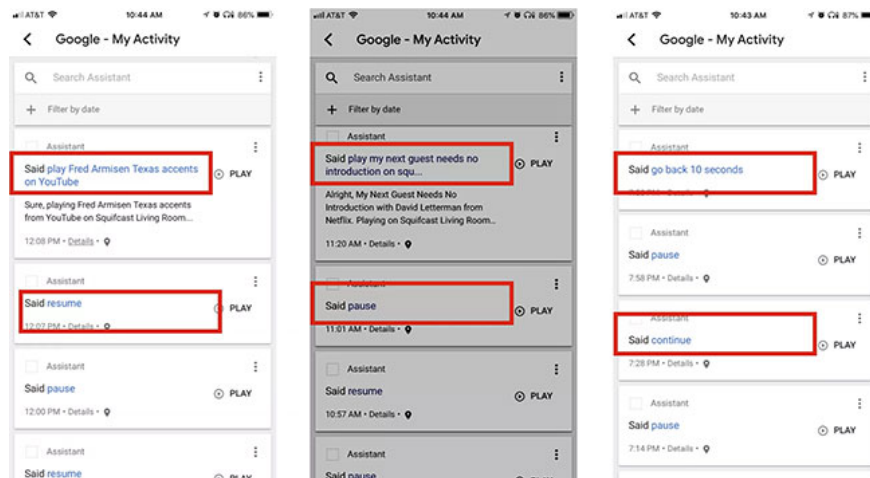
Services need to log in

1. Netflix
2. CBS All Access
3. HBO Now
4. Viki
5. Starz

Services do not need to be logged in

1. CW
2. YouTube / YouTube TV
3. Crackle
4. Red Bull
5. Google Play Movies & TV

Use Google Home voice commands on Chromecast



Use Google Home voice commands on Chromecast

Of course, you can control your Chromecast with the Google Home app, but using voice commands is much faster and more convenient.

Activating Google Home by voice requires a tagline, **'Hey Google'** or **'OK Google'** . You can then say any command you want. If you have multiple Chromecast devices, you'll also have to specify which device you want to play the video to.

So a full command would include:

`Kh?u l?nh > L?nh > N?i th?c thi l?nh`

For example: *'Hey Google, play My Next Guest Needs No Introduction on'*.

If you're connected to a service like Netflix, HBO Now or CBS All Access, you can ask Google Home and Chromecast to play any shows from those services. For example: *'Play Stranger Things on'*.

Other services like YouTube also allow you to play videos by voice. Try saying *'Play Fred Armisen Texas accents on'* or *'Play Adele videos on'* , after you use the activation phrase. If you want to specify videos on YouTube (or any other connected service), Just add *"on"* at the end of the command.

You can ask your Chromecast to play, pause and continue any video (or song) you're watching on TV via a Google device. Simply put, make your favorite catchphrase, then *'Pause'*, *'Play'* or *'Resume'*. This works even with services that are not currently logged in through Google Home, like Hulu. When finished, use the tagline and the command, *'Stop'*.

Controlling the video you are watching by voice is also very simple. You can ask your Chromecast to arrive at a specific time with the command *'Go back 10 seconds'* (Go back 10 seconds) or *'Go forward two minutes'* (fast forward 2 minutes).

If you need to adjust the TV volume, just say *'Set volume to 50 percent'* or *'Volume down on'* . If you want to turn off the sound completely, just say *'Mute'* . You can say *'Unmute'* when it's ready. ready to play the sound again.

You can even turn the TV on and off if the TV has HDMI Consumer Electronics Control (or HDMI CEC). Just say *'Hey Google, turn on '* .

You finished reading the article "**How to connect Google Home to Chromecast**" edited by the [TipsMake](#) team. We hope this article has provided you with many useful tech tips and tricks. You can search for similar articles on tips and guides. Thank you for reading and for following us regularly.
