

How to connect Bluetooth headphones to computers and laptops 2024

Connecting a Bluetooth headset to a smartphone is quite a simple operation, but to connect to a Windows computer, you need to do it manually. To help you easily use your wireless headset, TipsMake will show you how to connect your Bluetooth headset to your computer in just a few clicks.

Using a Bluetooth headset on your computer can help you be more comfortable when listening to music, watching movies or making calls over the Internet. Because it uses Bluetooth connection, you won't have to worry about the headphone cord getting tangled, broken, or unable to move when wearing the headphones. However, there are a few inconveniences that make users still not interested in using Bluetooth devices on computers and laptops. Partly because connecting a Bluetooth headset is a bit difficult and requires many attempts. With instructions on how to connect a Bluetooth headset to a computer or laptop below, you can use your headset anytime, anywhere and on any device.

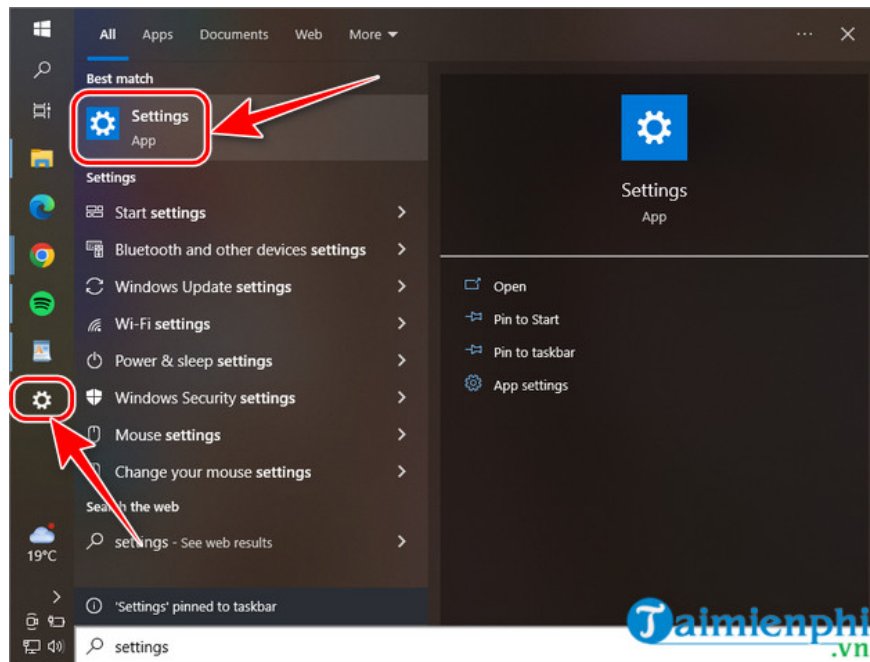
Instructions for connecting Bluetooth headphones to computers, laptops, and PCs

Step 1 : Before connecting the headset to your computer, you need to put the headset in Bluetooth connection mode by pressing and holding the headset's power button for a few seconds or until the status light on the headset flashes.

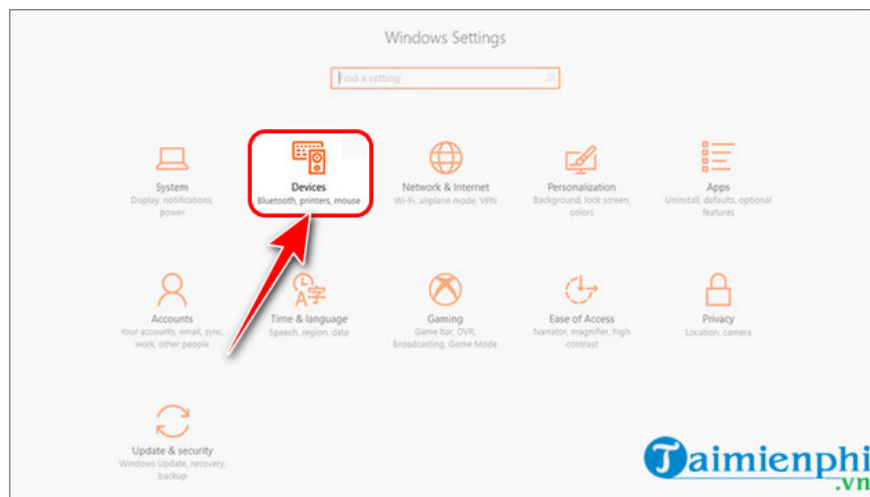
Note: Normally, Bluetooth headsets use this method. If it doesn't work, you can review your Bluetooth headset's user manual.



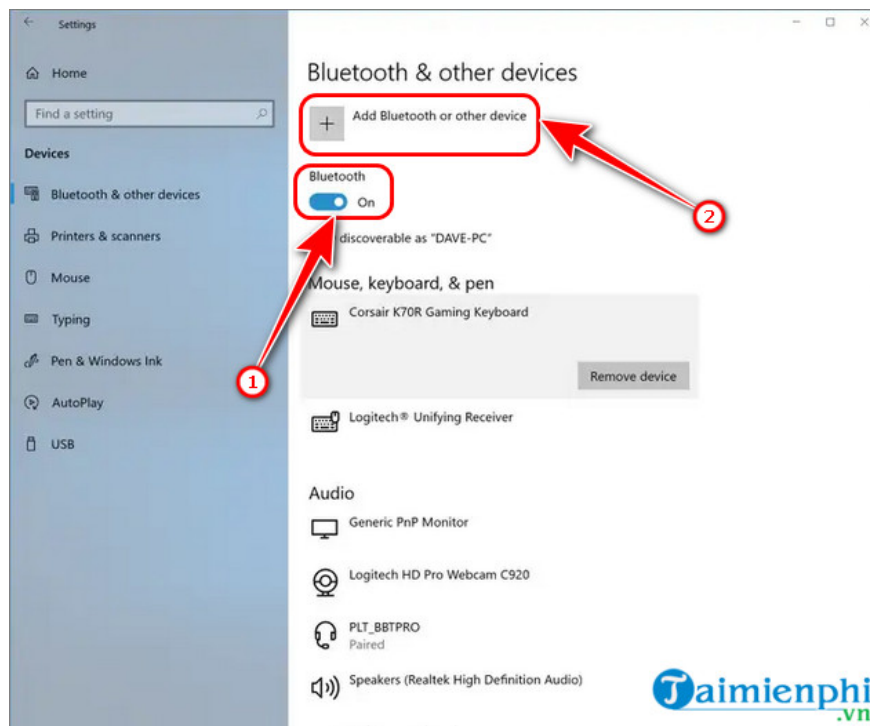
Step 2 : Next you need to turn on Bluetooth on your computer by clicking on the gear icon to open the **Settings** menu on your computer or open the Settings menu by searching on the **Start** search box . If you are using the latest operating system version Windows 11, you can refer to **how to turn on Bluetooth on Windows 11** for detailed instructions.



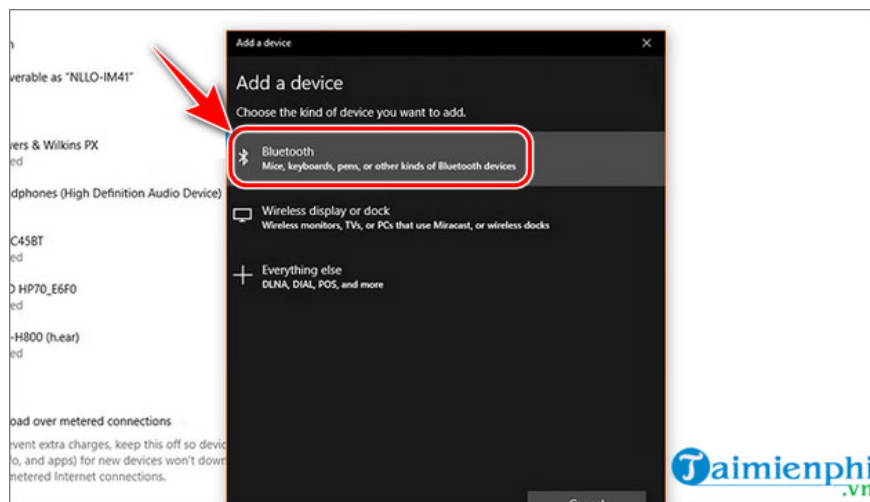
Step 3 : In the **Settings** menu , select **Devices** so that the device automatically opens the **Bluetooth & other devices** page .



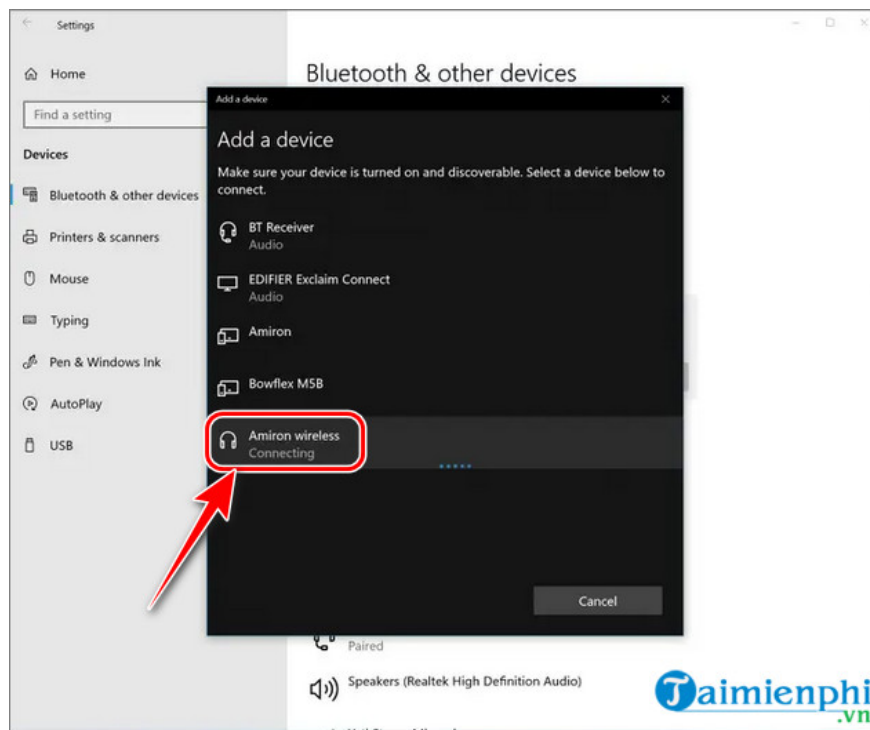
Step 4 : Make sure Bluetooth is turned on by clicking this button so it turns **ON** . Select **Add Bluetooth or other device** to add a Bluetooth device.



Step 5 : In the menu that opens, select the **Bluetooth** tab .



Step 6 : Here, a list of Bluetooth connected devices will appear, click on the Bluetooth headset device you want to connect to your computer.



After the connection is complete, you will receive a notification that the headset has been connected to the computer and can use the headset to listen to music, watch movies or make calls on the computer normally.

- Note: .

So TipsMake has introduced to you **how to connect Bluetooth headphones to your computer** , laptop, or PC to help you use your wireless headphones to listen to music and watch movies on the big screen conveniently and quickly. And not only with headphones, Windows also supports connecting your computer to your phone via Bluetooth, and if you have time, try connecting these two devices to see how it works. TipsMake is sure that there will be many interesting things. , there are many things that you haven't discovered when trying **to connect your computer to your phone via Bluetooth** . Wishing you success.

You finished reading the article "**How to connect Bluetooth headphones to computers and laptops 2024**" edited by the [TipsMake](#) team. We hope this article has provided you with many useful tech tips and tricks. You can search for similar articles on tips and guides. Thank you for reading and for following us regularly.