

How to Connect an HDMI Cable

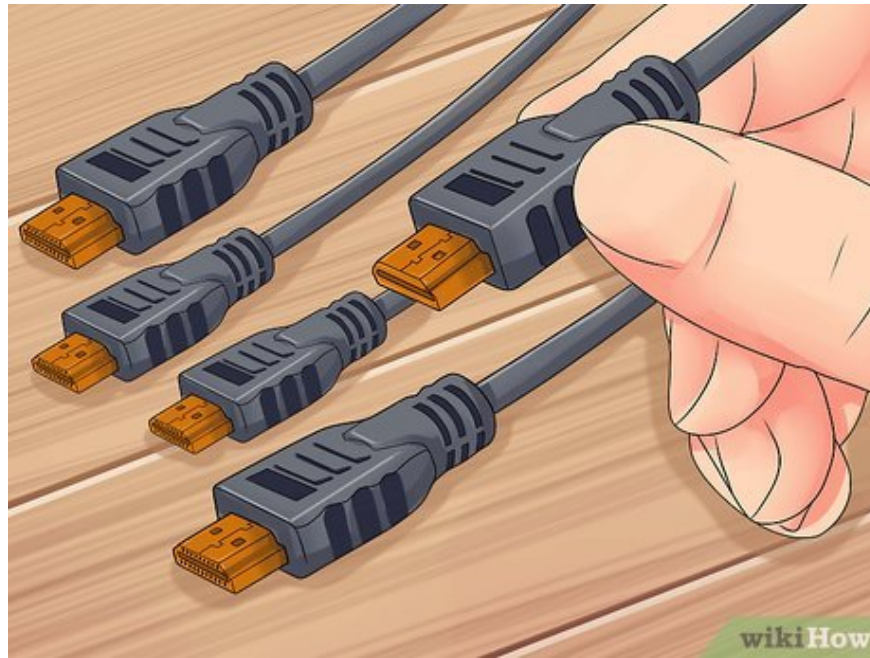
HDMI (High Definition Multimedia Interface) is an audio/video device connection standard. It replaces older connection methods such as combo port or S-video. HDMI transmits digital signals and can process both audio and video signals. HDMI is the simplest way to connect multiple t

Connecting the Home Theater System



Plug the HDMI port into the entire device. HDMI provides the best picture and sound quality compared to other connections. This is also the simplest way to connect devices, you just plug the cable into each device. If the receiving device has enough HDMI input ports, and the TV has at least one HDMI port, you can connect all the devices to get the best quality for your home theater.

Most new receivers have multiple HDMI input ports, allowing connection to all devices with HDMI cables, as well as an output port to connect to a TV.



Check the HDMI version your TV supports. Check if your TV supports HDMI 1.4 ARC (Audio Return Channel). This type allows the TV to send audio signals to a receiving device that transmits sound through the home theater speakers. Most TVs manufactured after 2009 support HDMI 1.4 and newer.

If your TV doesn't support HDMI 1.4, you'll need to use a separate audio cable to connect the TV and the receiving device. The type of cable that gives the best sound quality is an optical audio cable. Connect the optical audio cable from the output port of the TV to the input port of the receiving device.

If you watch TV through a cable box, and the box is connected to the receiver, you don't need to worry about ARC because the audio is transmitted from the cable box to the receiver. ARC is only necessary when watching online TV on a TV or wanting to play it on a home audio system.



Connect the device to the receiver input via HDMI. This includes DVD/Blu-ray players, game consoles, etc. If the number of HDMI input ports is limited, use HDMI cables for newer devices first because they provide more benefits.

For example, if the receiver only has two input ports and you own a Roku, a PlayStation 4, and a DVD player, connect the Roku and PS4 using HDMI and then use the hybrid connection for the DVD player. Roku and PS4 will benefit more when connecting to HDMI.

The HDMI plug should only be inserted in one direction, so don't try to push the connector.



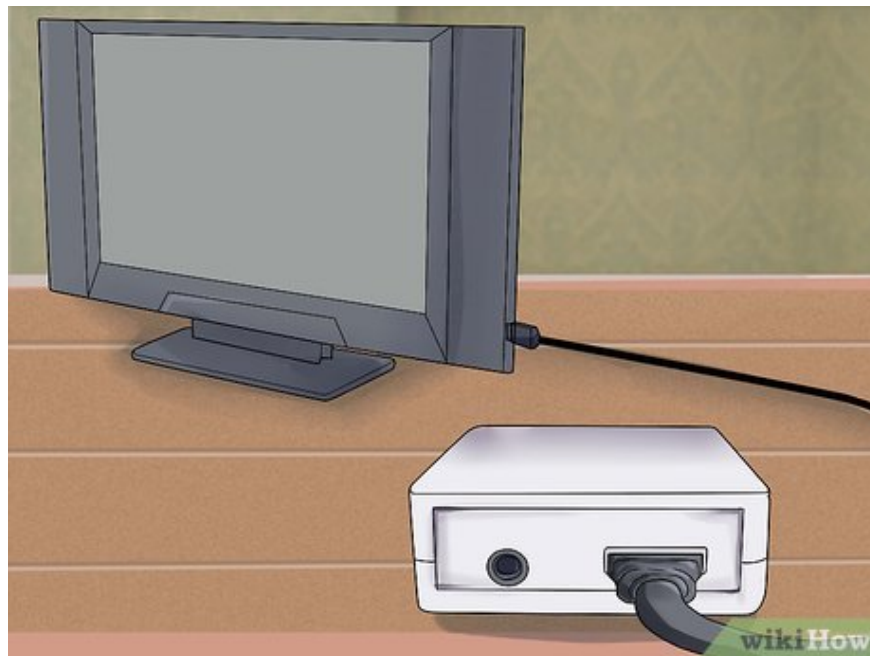
Connect the HDMI output on the receiving device to the input on the TV. This allows the image of the entire device connected to the receiving device to appear on the TV. With HDMI 1.4 or later, the audio signal from the TV is transmitted back to the receiving device, allowing the TV's sound to be played on the home theater sound system.



Use the receiver to switch between input ports. All devices are routed to the receiving device. This means that the TV can be set up to the HDMI input plugged into the receiving device, and you can completely switch between ports via device control. .

Since everything is connected via HDMI, audio from other devices will be output from the receiving device's speakers.

Most devices should be configured automatically when an HDMI connection is detected, although you'll need to make a little adjustment to suit a specific device.



Connect the device directly to the TV. If you don't have a home theater setup, you can still plug your HDMI device directly into your TV and then control the input port with your TV remote. Modern TVs have at least two

HDMI input ports.

If the number of devices is more than the number of input ports on the TV, you need to buy an HDMI adapter to increase the number of HDMI ports.



Enable HDMI-CEC. This is a protocol that allows controlling an HDMI-connected device via HDMI control. Normally, you will use the TV remote to control the device. HDMI-CEC needs to be enabled in each device's settings menu if you want to control them.

HDMI-CEC has different names depending on the manufacturer, for example Anynet+ (Samsung), Aquo Link (Sharp), Regza Link (Toshiba), SimpLink (LG), etc. Read the user manual for more information.

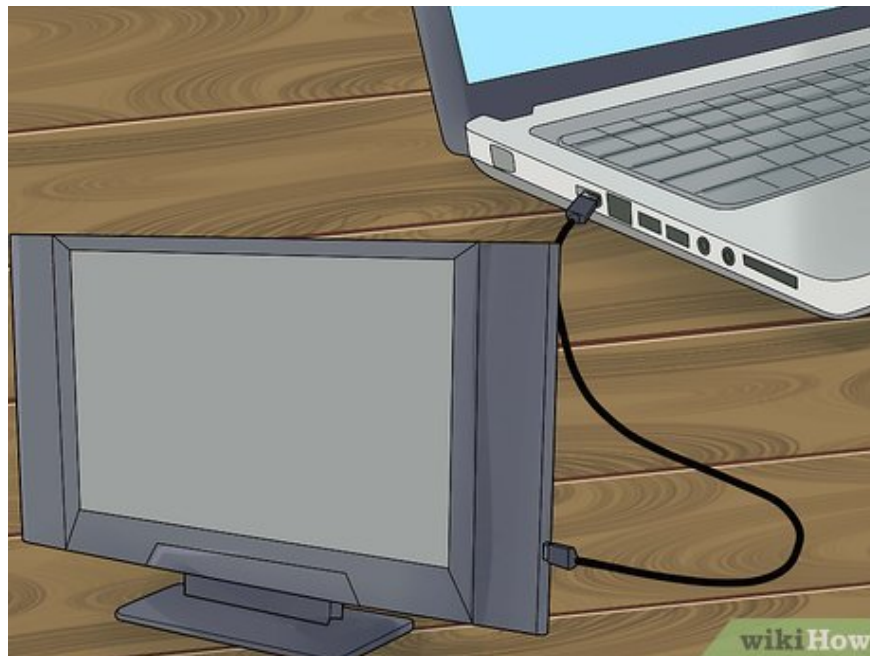
Connect the computer to the TV



Locate the HDMI port. Not all computers have an HDMI port, but newer models often support this type of port. If your desktop computer doesn't have an HDMI port, you'll need to install a new video card. The HDMI port is usually located on the back or side of the device.

If your computer doesn't have an HDMI port but supports a DVI or DisplayPort port, you can purchase an adapter that allows you to connect an HDMI cable. If converting from DVI to HDMI, you need to use a separate audio cable because DVI does not support audio signal transmission.

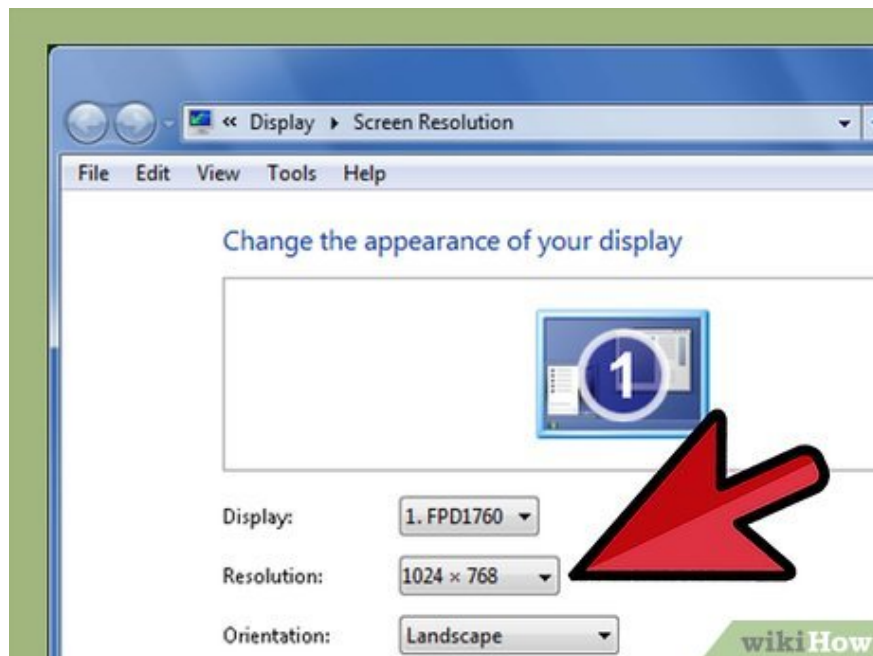
You can buy a USB to HDMI adapter for computers that don't have an HDMI port.



Connect the computer to the HDMI input port on the TV. Run the cable between the two devices. The computer can automatically detect the TV if it is turned on.



Switch inputs using the TV remote. The TV needs to be set to HDMI input connected to the computer. Use the "Input" function on your TV remote to find the correct port. If you're not sure which port to choose, review the ports on your TV as they're usually numbered or named.



Choose the image display method. There are several options for displaying images on the TV. Select the best mode on the Display menu on your computer. To access this menu on Windows, right-click on the desktop and select *Screen Resolution* . On OS X, choose the Apple menu, choose *System Preferences* , and then choose *Displays* .

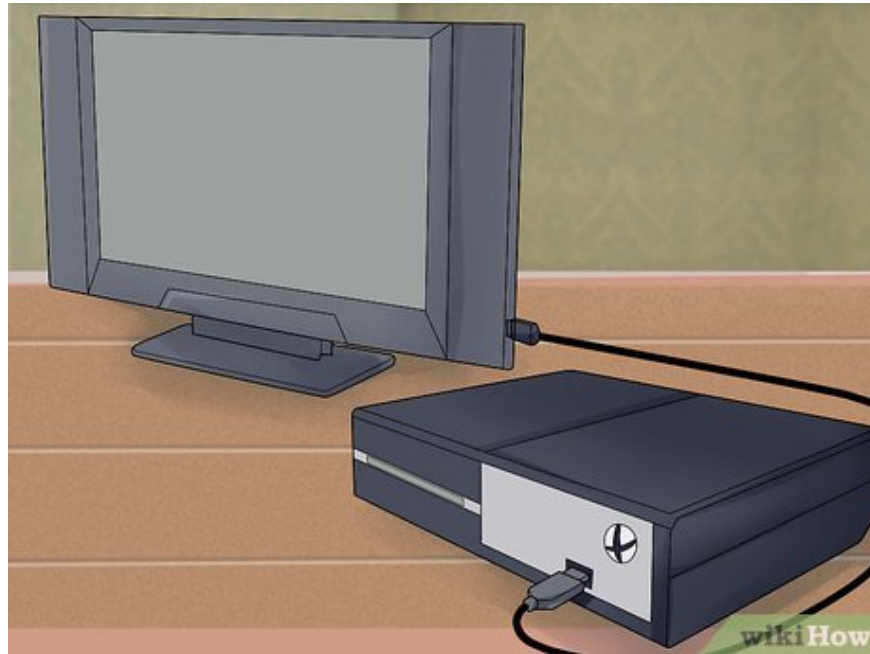
You can set the TV to be the primary display device, the computer screen will turn off and the image will only be displayed on the TV.

You can mirror the display so that two screens play the same content.

You can expand your desktop by projecting content onto a large TV screen. This will help you have more space when working with many windows and documents.

See instructions for how to configure two computer displays.

Connect Game Console to TV



Plug the player into the HDMI input port on the TV. Not all game consoles have an HDMI port, but newer models often support it. Most Xbox 360s, all PS3s, PS4s, Wii Us and Xbox Ones support HDMI. The original Wii and Xbox do not support HDMI.



Switch HDMI input port using TV remote. You need to select the input port that connects to the gaming console. You should label the input port on the TV to remember the connection more easily.



Configure a gaming console connected via an HDMI cable. Most machines will automatically detect the HDMI cable and set the best configuration. You may have to go through a few short installation steps when you first start your computer.

You finished reading the article "**How to Connect an HDMI Cable**" edited by the [TipsMake](#) team. We hope this article has provided you with many useful tech tips and tricks. You can search for similar articles on tips and guides. Thank you for reading and for following us regularly.