

How to connect a wireless mouse to a computer

Connecting a wireless mouse to a Mac or Windows computer is easy thanks to Bluetooth technology.

In some cases when you are using a laptop, especially playing games or performing difficult tasks, the trackpad will not be able to handle it all. Or in case you need more flexibility and space than a wired mouse when using a desktop computer.

The best option you have in these situations is to connect your mouse wirelessly to your computer.

Fortunately connecting a wireless mouse to a Mac or Windows computer is easy thanks to Bluetooth technology.

That's why both Mac and PC users rarely want to use the trackpad regularly and always carry a wireless mouse with them.

How to connect a wireless mouse to a Mac

Step 1. Turn on pairing mode on mouse if it is not already enabled. Normally there will be a green light or a blinking light indicating it is ready to connect.

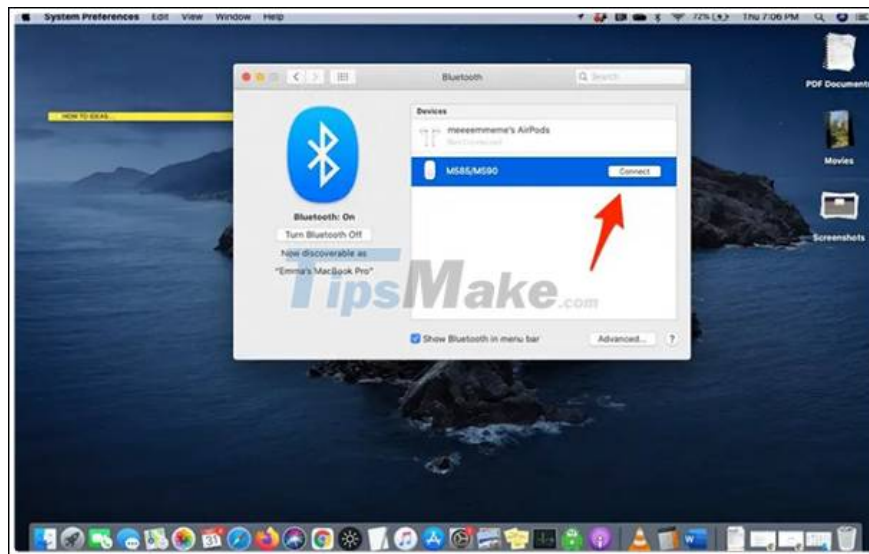
Step 2. Open the **System Preferences** app on your Mac (the silver cog icon).

Step 3. Select **Bluetooth** from the list of options.



Select Bluetooth from System Preferences

Step 4. You will see your mouse appear under **Devices** . Select **Connect** .



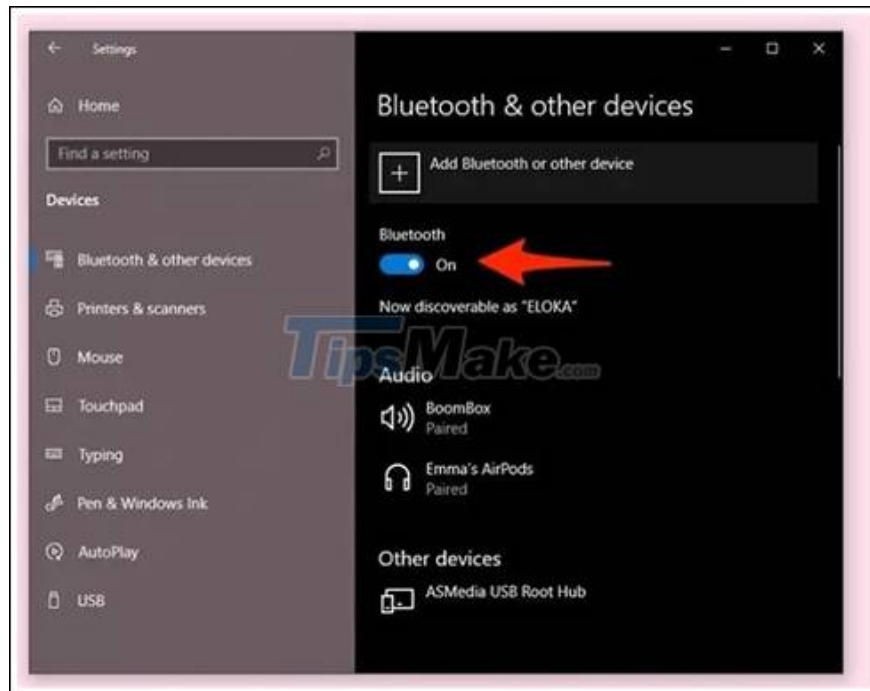
Step 5. **Connected** status '**Connected**' appears under the device's name to let the user know that your Bluetooth mouse is connected to your Mac and ready for use.



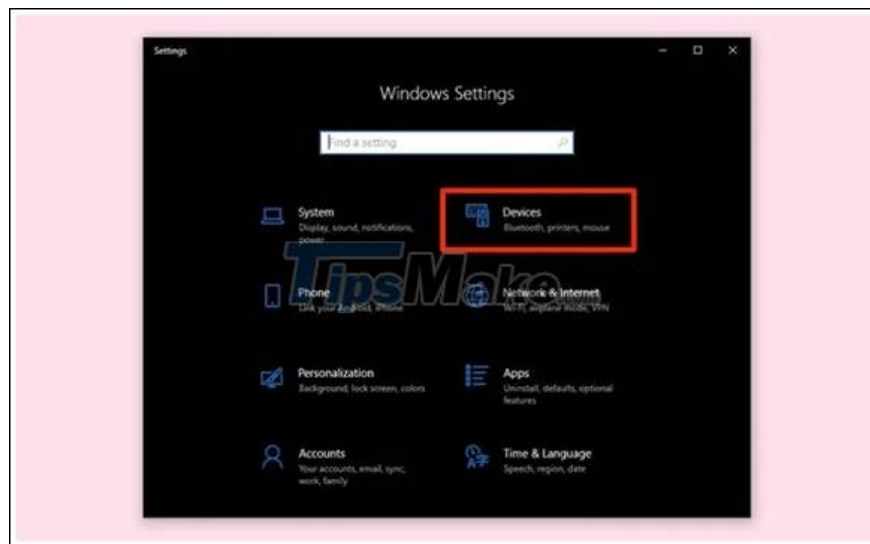
How to connect a wireless mouse to a PC

Step 1. Make sure your mouse is connected. Follow the mouse instructions if you are unsure how to proceed.

Step 2. Turn on **Bluetooth** on PC by turning on switch in **Bluetooth & other devices section of Settings** .

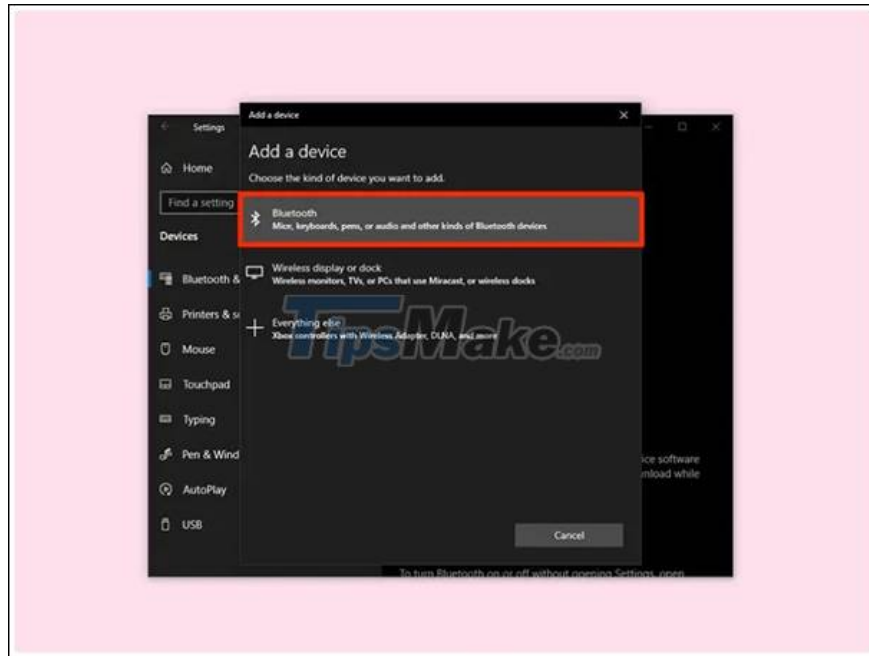


Step 3. Go back to the **Settings** menu and select **Devices** .



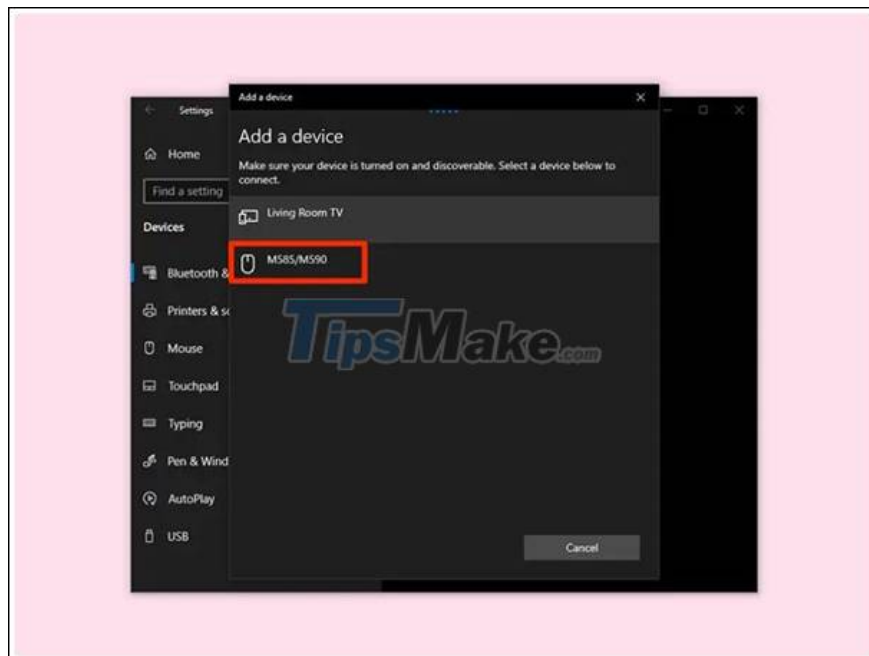
Step 4. Click **Add Bluetooth or other devices** .

Step 5. Next, select **Bluetooth** .



Select Bluetooth under Add a device

Step 6. On the **Add a device** page , you will see a list of connected wireless mice. Select the mouse and it will automatically connect.



Select a paired device

Wait a moment the computer will let you know the device is ready for use.

You finished reading the article "**How to connect a wireless mouse to a computer**" edited by the [TipsMake](#) team. We hope this article has provided you with many useful tech tips and tricks. You can search for similar articles on tips and guides. Thank you for reading and for following us regularly.

