

How to Connect a PC to a Bluetooth Device

Today's TipsMake will show you how to pair your headset, keyboard, mouse, speaker or any other Bluetooth device with your Windows PC. The steps are quite simple and apply to all versions of Windows, but you need to check to make sure your PC supports Bluetooth. If your PC doesn't have Bluetooth, you can use a USB Bluetooth adapter. If you're not sure whether your computer has Bluetooth, check out this TipsMake article.

On Windows 10



Turn on the Bluetooth device. If you want to connect headphones, speakers, or some other device to your Windows 10 PC, start by turning on Bluetooth.

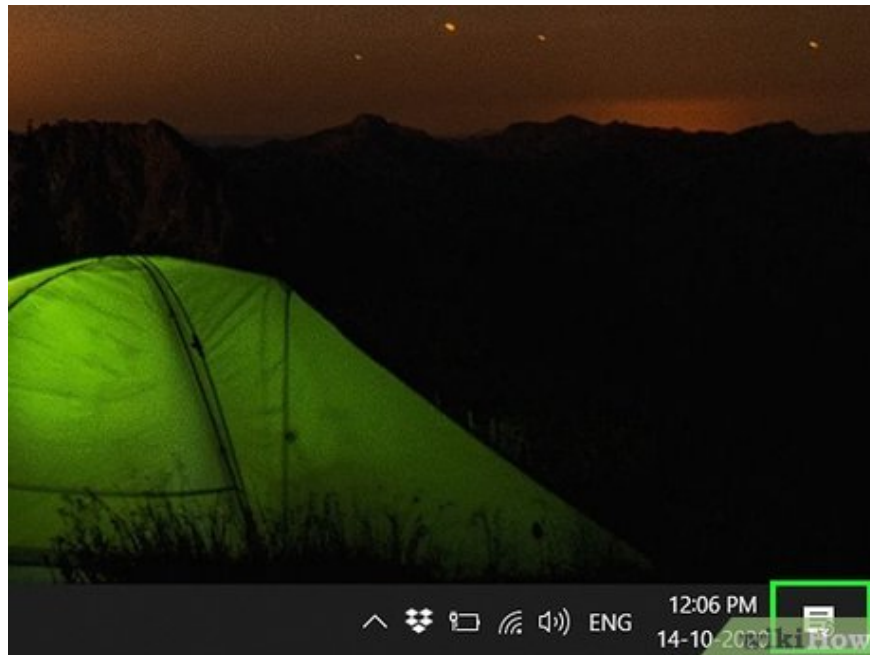
If your computer does not support Bluetooth, you can add it using a USB Bluetooth adapter. Simply connect the adapter to your computer and follow the on-screen instructions to install.

Note: The weakest type of Bluetooth (Bluetooth 1.0) is capable of connecting to devices within a range of 10 m. Bluetooth 2.0 extends this range up to 30 m. Bluetooth 3.0 still has a range of 30 m, but can operate up to 60 m. If your device has Bluetooth 5, you can connect to devices up to about 240 meters away.

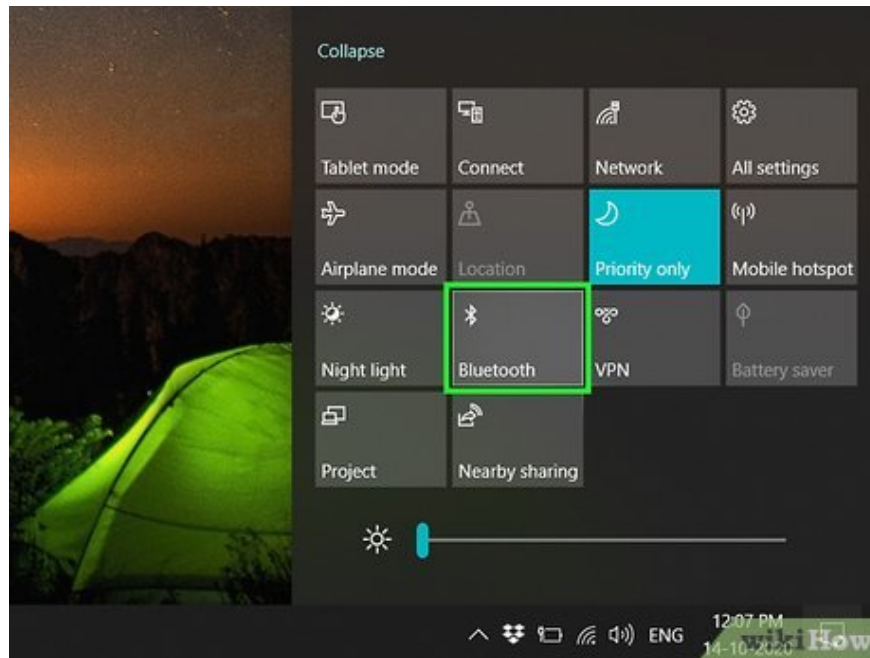


Set up Bluetooth devices to be discoverable. When the device is visible, the PC will be able to find it and initiate the connection. Usually when you turn on Bluetooth, the device will be put into discoverable mode immediately. With some other devices, you need to press the function button (or combination of buttons) to put the device into display mode.

Normally, an LED somewhere on the device will flash when the display mode is turned on.

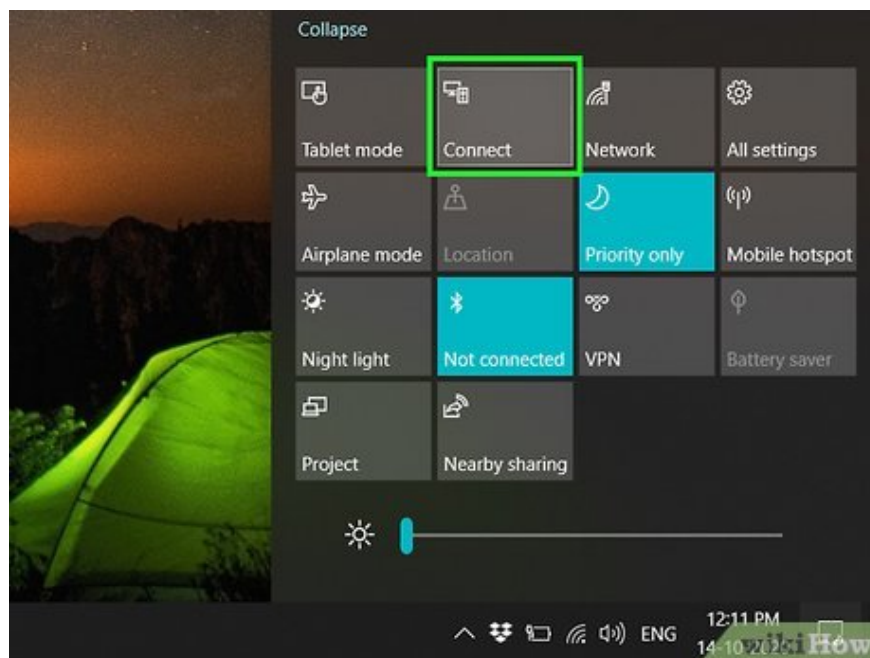


Click the Action Center icon. This option has a square speech bubble icon to the right of the clock in the taskbar.

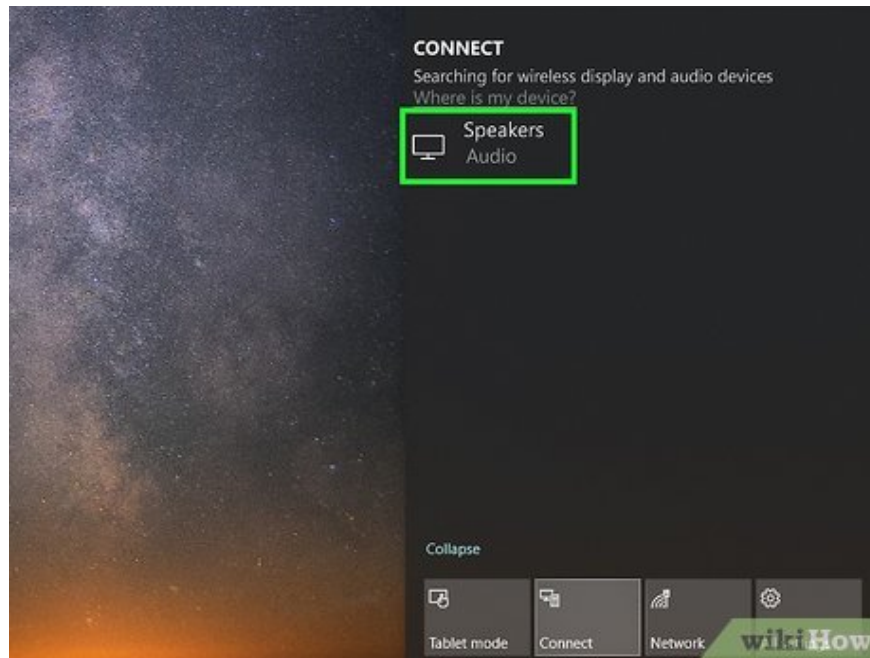


Click the Bluetooth icon to enable this feature. The Bluetooth option has a horizontal bow tie icon. When Bluetooth is turned on, the button will change color and indicate "Not connected" or display the device name. When Bluetooth *is off*, the icon will simply display "Bluetooth" and become gray.

If you've paired a Bluetooth device with your PC before, the two will now connect automatically.



Click the Connect box , located directly below the Bluetooth icon. Look for the computer screen icon with your phone or tablet above it. The PC will start scanning for available Bluetooth devices in range.



Click the Bluetooth device. The device may have a descriptive name that helps you identify it easily, but sometimes this will be a combination of letters and numbers. You can ascertain the device name by checking the accompanying instruction manual. Once you click, your device will start pairing with your PC.

Sometimes you need to enter a code that appears on your device. Once there, follow the on-screen instructions to continue the pairing process.

If the device does not appear, try to fix it by turning it off and on again.

On Windows 8.1



Turn on the Bluetooth device. If you want to connect headphones, speakers, or some other device to your Windows 10 PC, start by turning on Bluetooth.

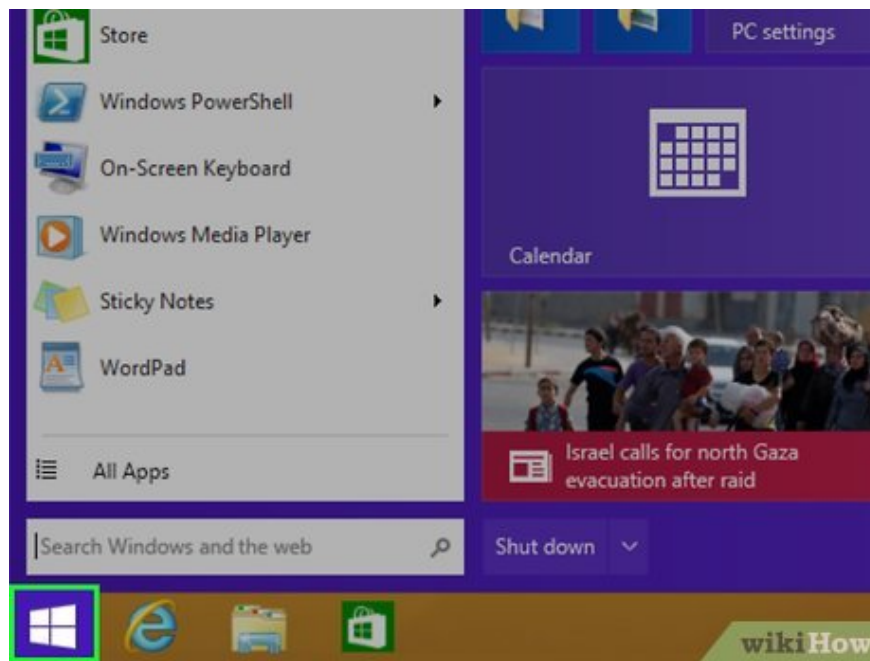
The weakest type of Bluetooth (Bluetooth 1.0) is capable of connecting to devices within a range of 10 m. Bluetooth 2.0 extends this range up to 30 m. Bluetooth 3.0 still has a range of 30 m, but can operate up to 60 m. If your device has Bluetooth 5, you can connect to devices up to about 240 meters away.

Tip: If your computer doesn't support Bluetooth, you can add it using a USB Bluetooth adapter. Simply connect the adapter to your computer and follow the on-screen instructions to install.

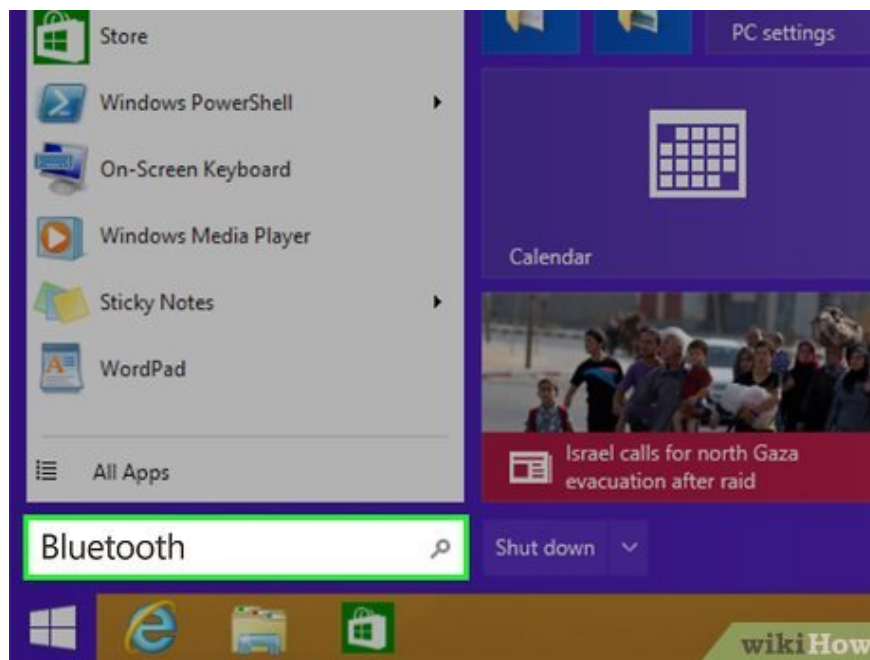


Set up Bluetooth devices to be discoverable. When the device is visible, the PC will be able to find it and initiate the connection. Usually when you turn on Bluetooth, the device will be put into discoverable mode immediately. With some other devices, you need to press the function button (or combination of buttons) to put the device into display mode.

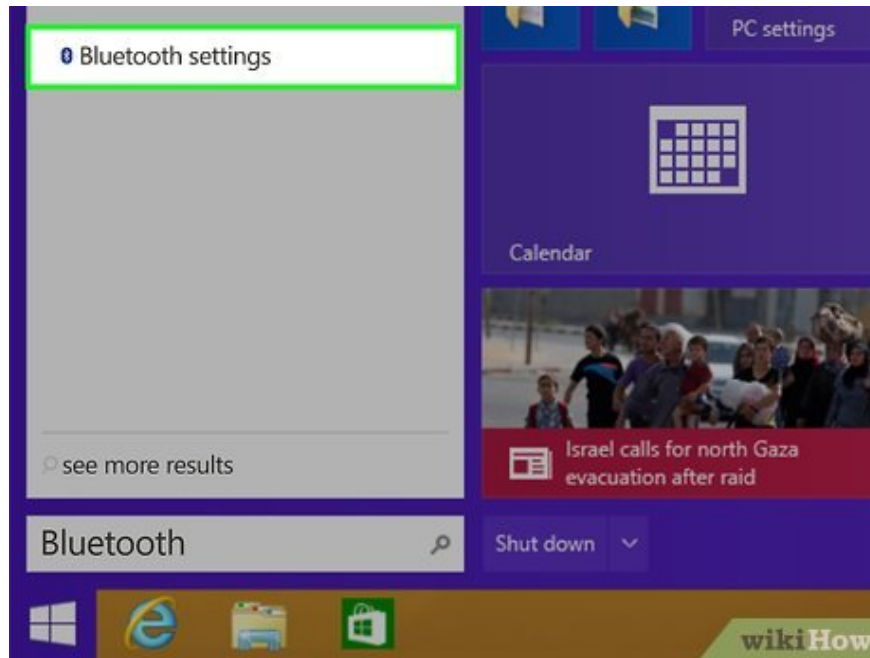
Normally, an LED somewhere on the device will flash when the display mode is turned on.



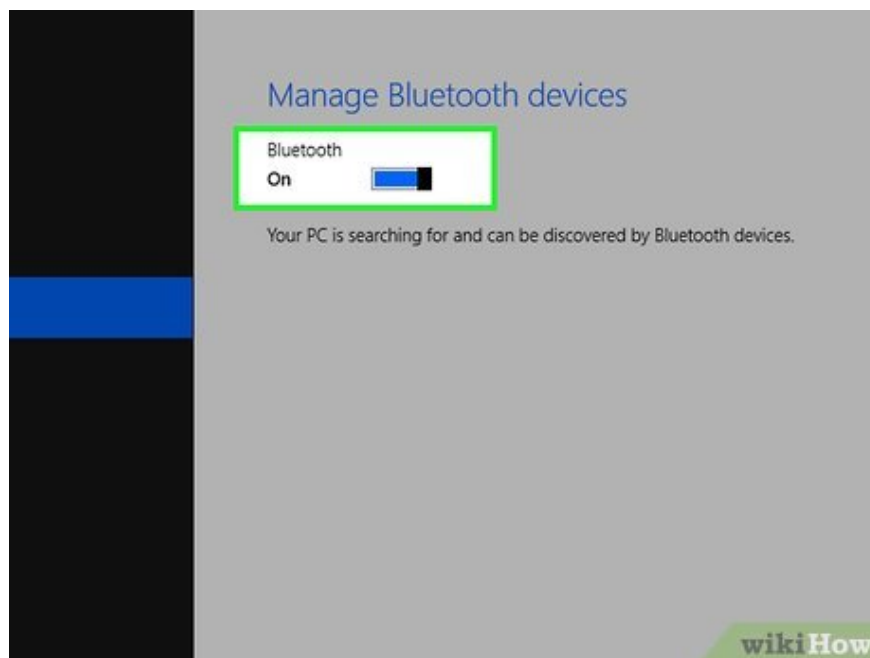
Click the Start button in the lower left or upper right corner of the home screen.



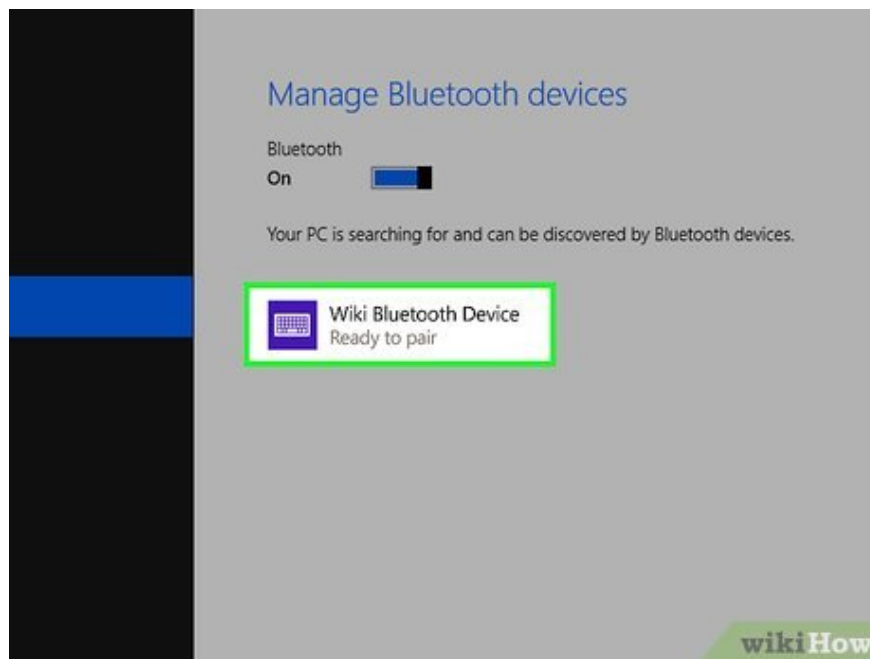
Type Bluetooth in the search bar.



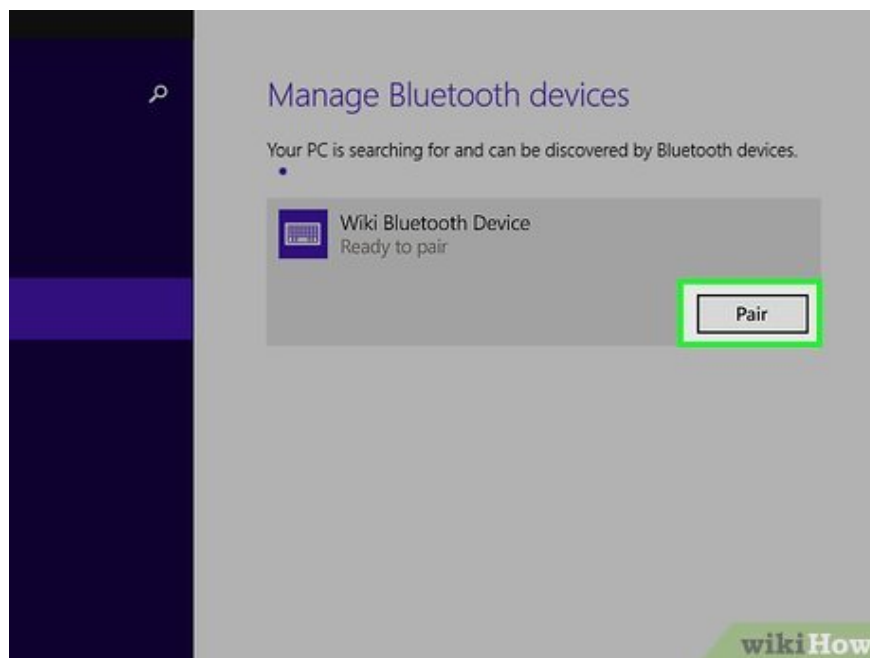
Click Bluetooth settings in the search results.



Swipe the "Bluetooth" switch to the On position (blue). As soon as this switch is blue, the PC goes into display mode and can connect to Bluetooth devices. Windows will begin scanning for Bluetooth devices that appear within range and return a list.



Click the Bluetooth device. The device may have a descriptive name that helps you identify it easily, but sometimes this will be a combination of letters and numbers. You can ascertain the device name by checking the accompanying instruction manual.



Click Pair . The device will begin pairing with the PC.

Sometimes you need to enter a code that appears on your device. Once there, follow the on-screen instructions to continue the pairing process.

If the device does not appear, try to fix it by turning it off and on again.

On Windows 7 and Vista



Turn on the Bluetooth device. If you want to connect headphones, speakers, or some other device to your Windows 10 PC, start by turning on Bluetooth.

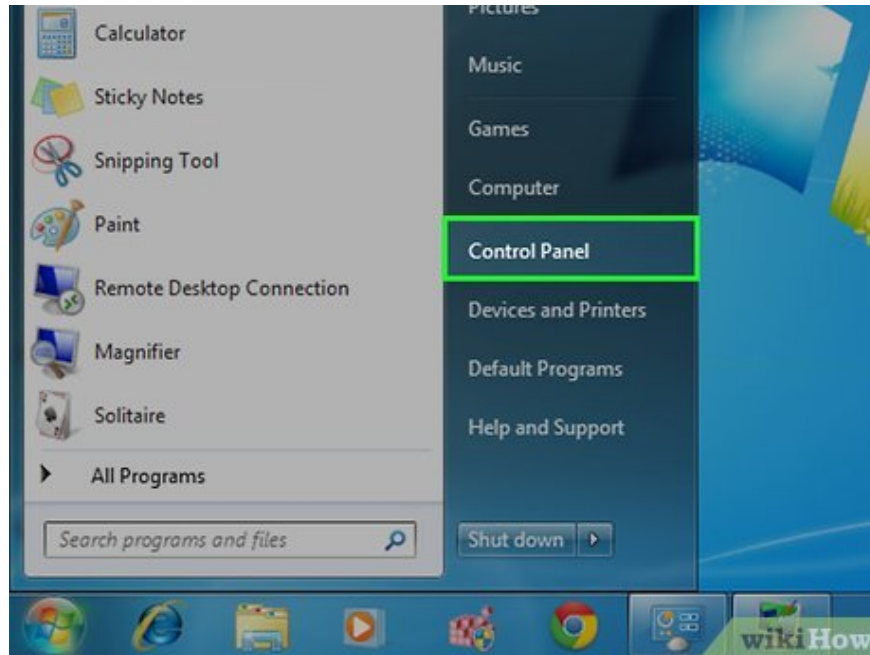
The weakest type of Bluetooth (Bluetooth 1.0) is capable of connecting to devices within a range of 10 m. Bluetooth 2.0 extends this range up to 30 m. Bluetooth 3.0 still has a range of 30 m, but can operate up to 60 m. If your device has Bluetooth 5, you can connect to devices up to about 240 meters away.

If your computer does not support Bluetooth, you can add it using a USB Bluetooth adapter. Simply connect the adapter to your computer and follow the on-screen instructions to install.



Set up Bluetooth devices to be discoverable. When the device is visible, the PC will be able to find it and initiate the connection. Usually when you turn on Bluetooth, the device will be put into discoverable mode immediately. With some other devices, you need to press the function button (or combination of buttons) to put the device into display mode.

Normally, an LED somewhere on the device will flash when the display mode is turned on.

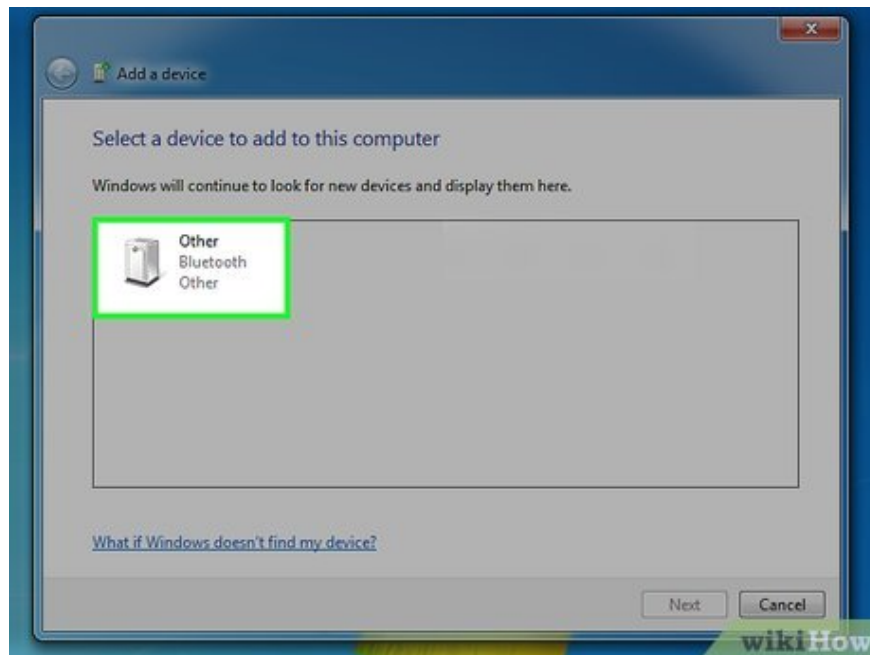


Open your PC's Control Panel. Click the Start menu and select **Control Panel** .



Click Add a device below the "Hardware and Sound" heading. This option is on the right side of the Control Panel window. The Add a Device installer will appear and automatically search for available Bluetooth devices.

Note: If you don't see this option, you'll need to return to the Start menu and select **Devices and Printers** and then click **Add a device** here.



Click the device and select Next . Click the Bluetooth device. The device may have a descriptive name that helps you identify it easily, but sometimes this will be a combination of letters and numbers. You can ascertain the device name by checking the accompanying instruction manual. Once you click, your device will start pairing with your PC.

Sometimes you need to enter a code that appears on your device. Once there, follow the on-screen instructions to continue the pairing process.

If the device does not appear, try to fix it by turning it off and on again.

You finished reading the article "**How to Connect a PC to a Bluetooth Device**" edited by the [TipsMake](#) team. We hope this article has provided you with many useful tech tips and tricks. You can search for similar articles on tips and guides. Thank you for reading and for following us regularly.