

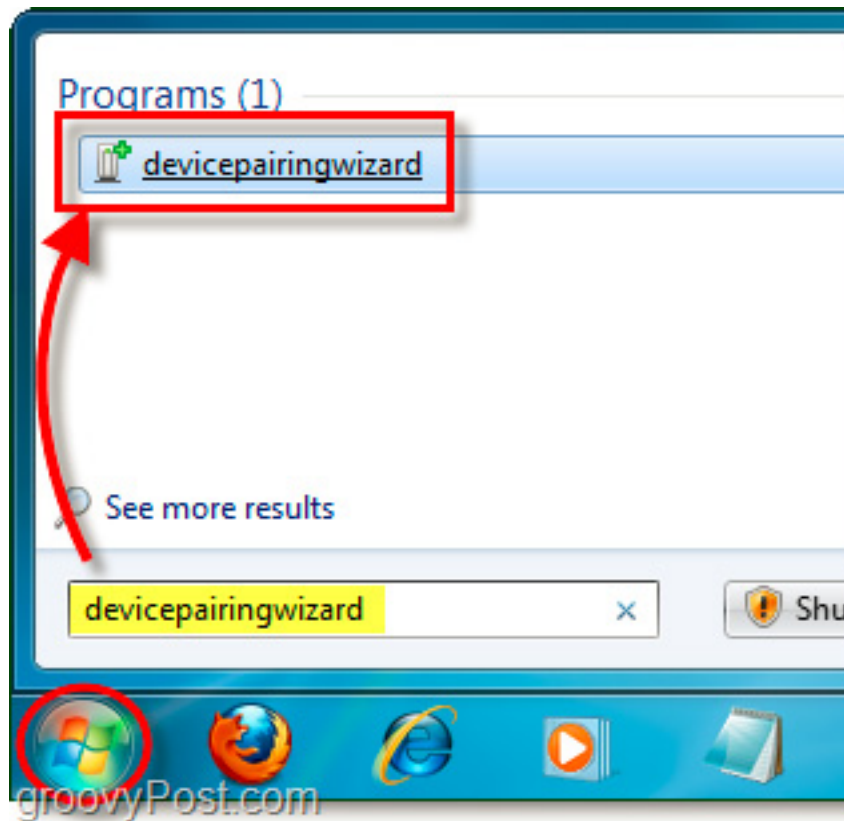
How to connect a Bluetooth device on Windows

Connecting a Bluetooth device on a Windows computer allows you to easily share data quickly, in addition to using email or USB accounts ..

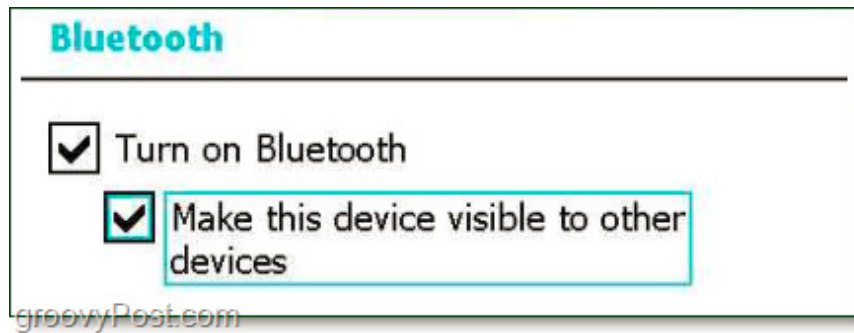
The protocol of connecting technology devices via USB standard is becoming more and more popular and available all over the market today, from complex products such as camera cameras, to some simple and familiar components. Such as phones, headsets . The theory is that, but in fact, quite a lot of people have difficulties in connecting peripheral devices to computers via Bluetooth. In the tutorial below, we will present the most basic operations to complete this process with Windows operating systems.

1. Connect Bluetooth device on Windows 7:

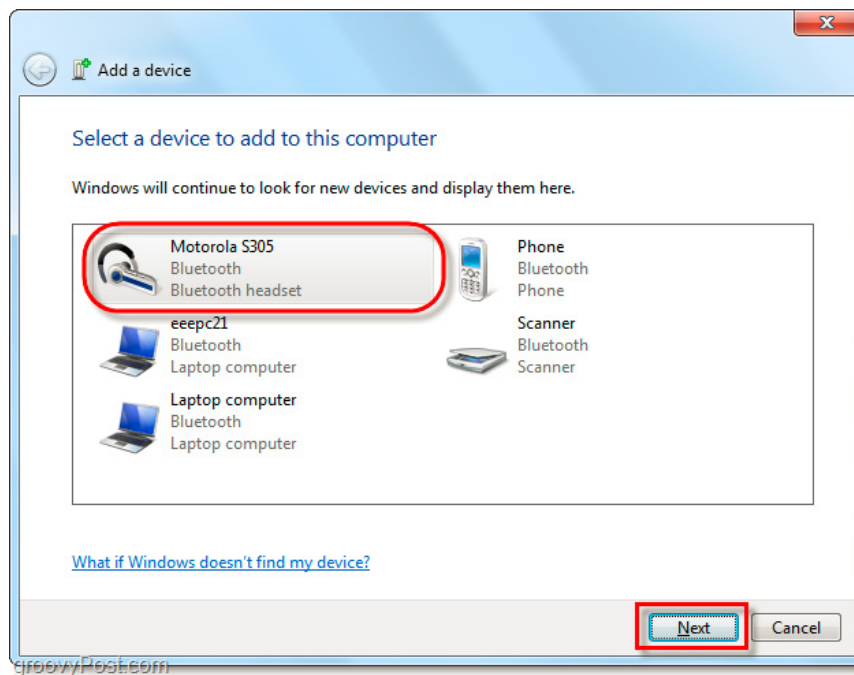
First, open the Start Menu (press Windows), enter **devicepairingwizard** and press Enter:



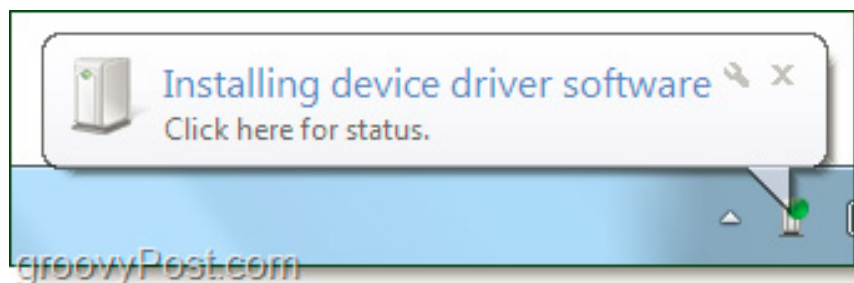
Note that users should enable the Bluetooth connection of the phone or headset first, namely **discoverable** or **visible options** on that device. However, depending on the different devices, this setup process is not the same:



Then, on Windows' main control window, a list of identifiable devices will be displayed. You select the correct component you want to connect and click Next:



In this first connection, everyone had to wait a bit more for Windows to install compatible drivers.

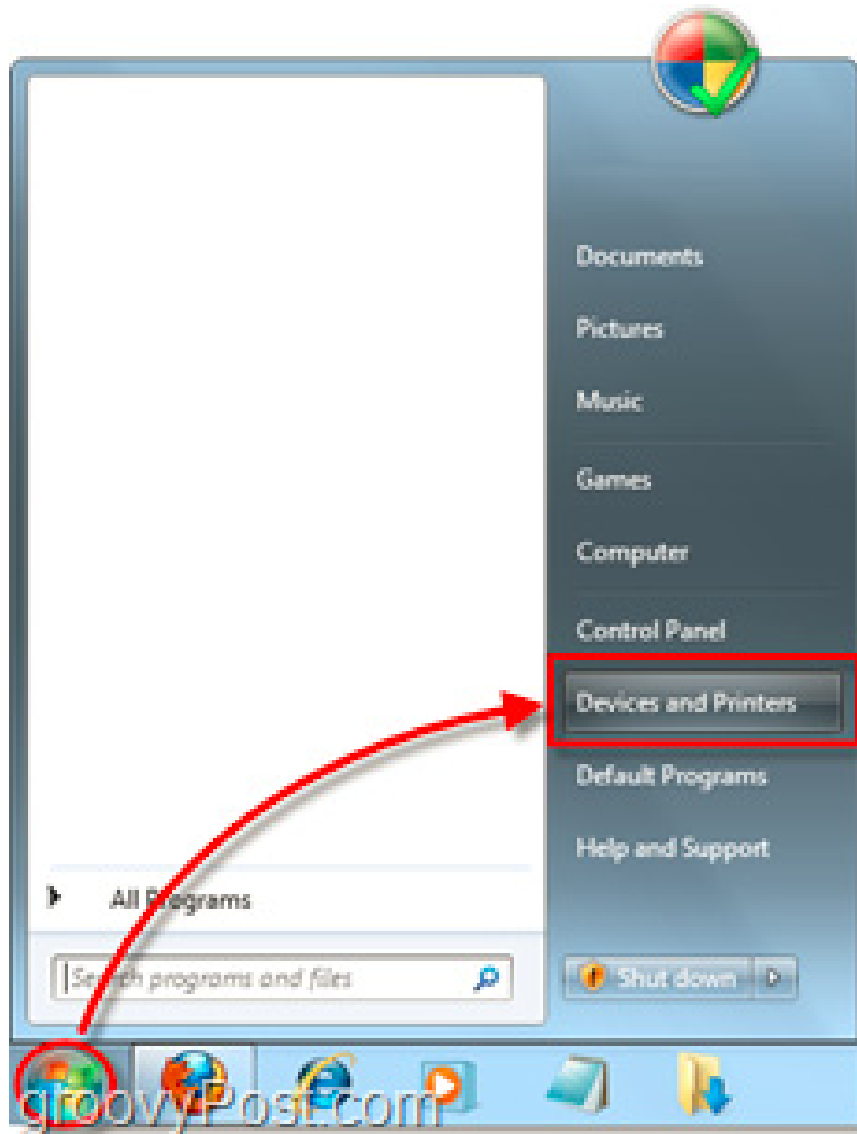


When everything is complete, Windows will display a message similar to the image below:

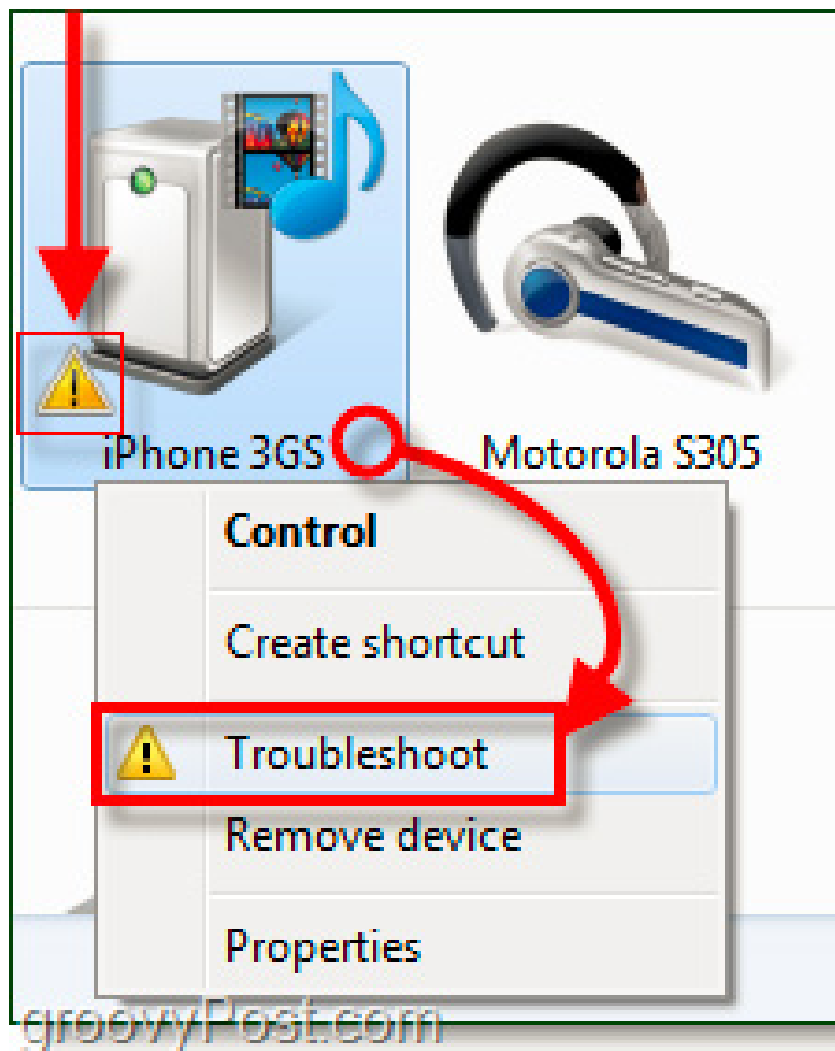


However, in reality, things are not always so smooth. There are some special cases, after the system recognizes the device but cannot be used. And continue the following are some basic solutions and solutions that are easiest to implement.

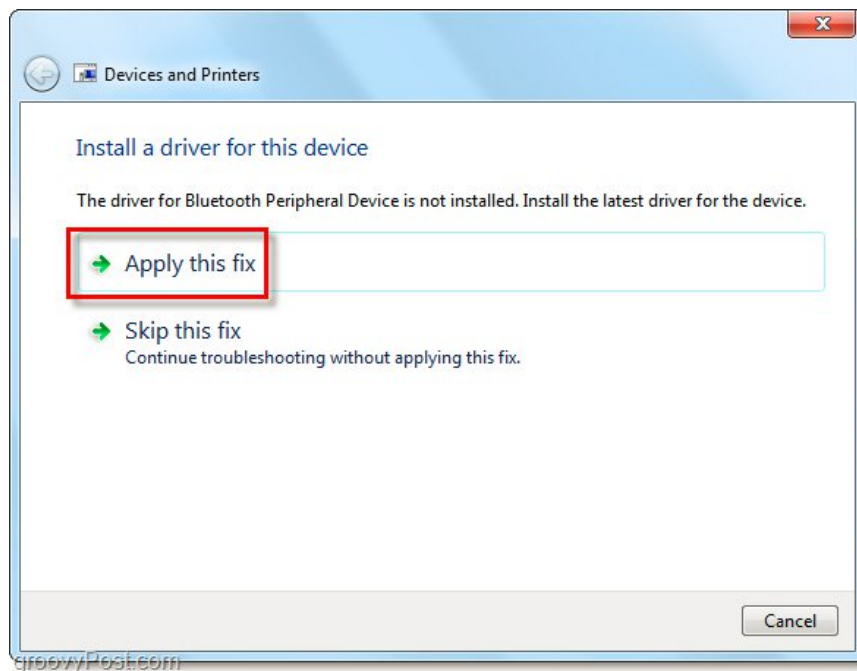
You open the Start Menu (press Windows key) and select Devices and Printers:



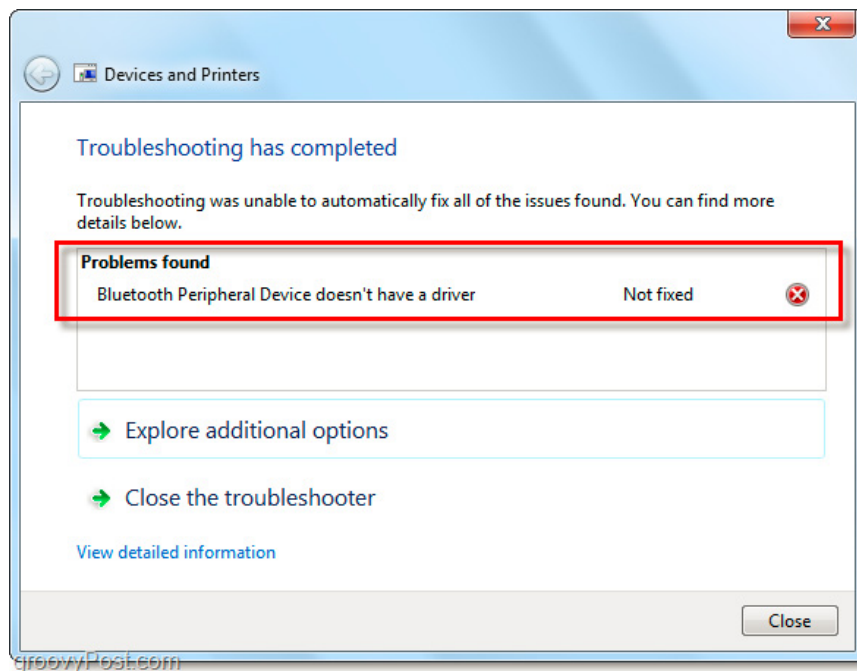
Right-click on the device you're having trouble with (for example, the iPhone 3GS), usually displayed with a yellow triangle icon and exclamation mark:



Much of the exact cause of this problem is due to incompatible drivers. At the next display window on the system, you select Apply this fix:



And let's hope that the above action will solve the problem. But in other cases, Bluetooth devices cannot be connected. As an example here is the iPhone 3GS (or iPod Touch) - screenshot below. The phone is next to connectivity, the rest cannot perform any other functions:

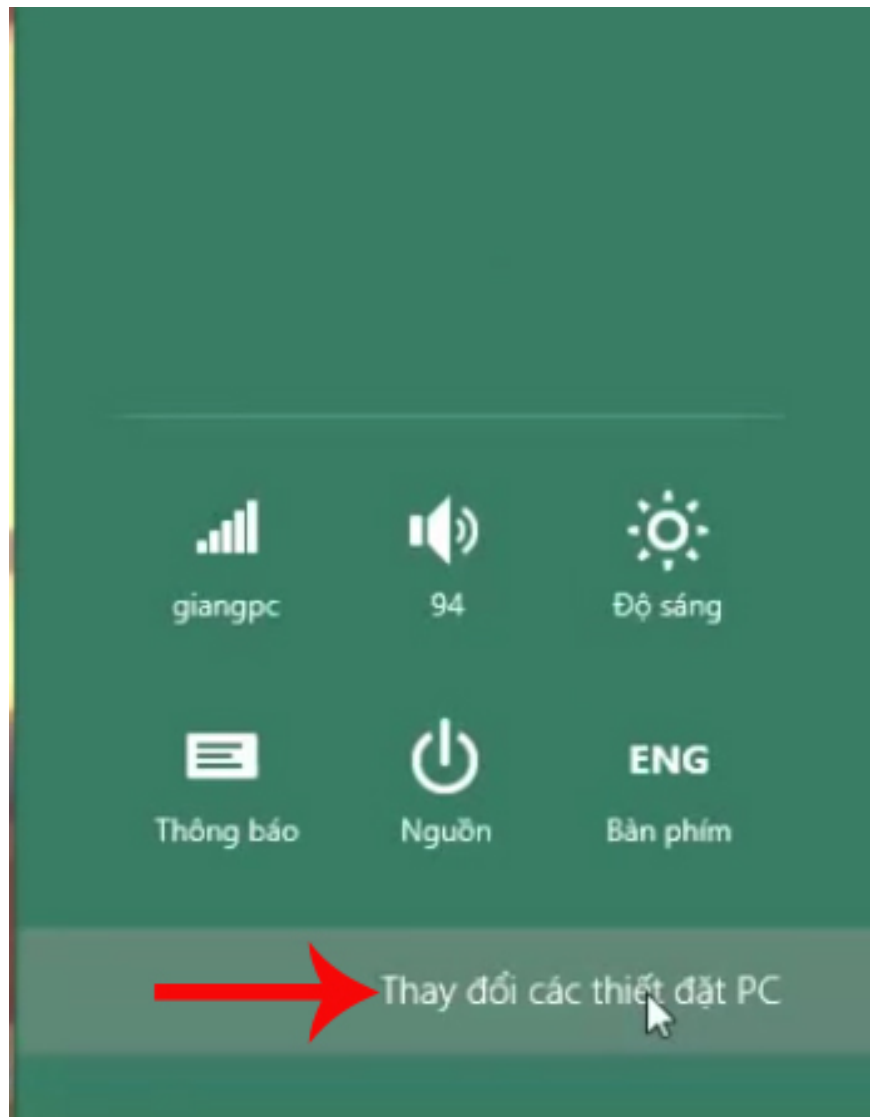


To overcome, you need to directly consult information from the manufacturer or the manufacturer of the device manufacturer above.

2. Turn on or turn off Bluetooth on Windows 8:

Step 1:

First of all, we will **open the Charm bar** by moving the mouse to the upper right corner or pressing the Windows + W key combination and then selecting Settings (Settings). After that, the user selects next to **Change settings for PC** (Change PC settings).



Step 2:

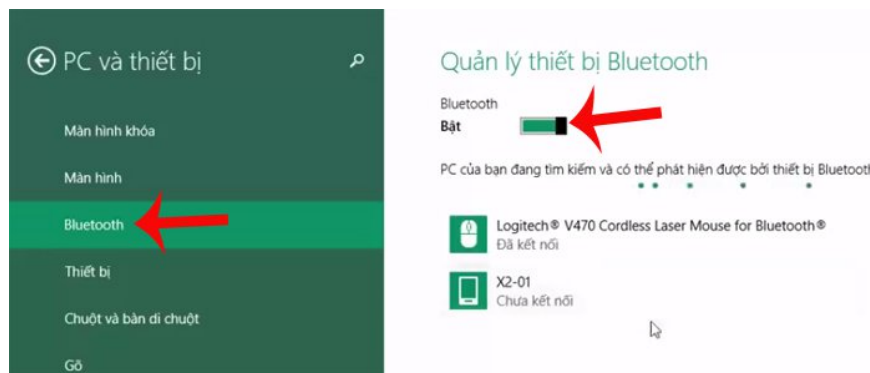
Next click on **PC and device items** (PC and devices).



Step 3:

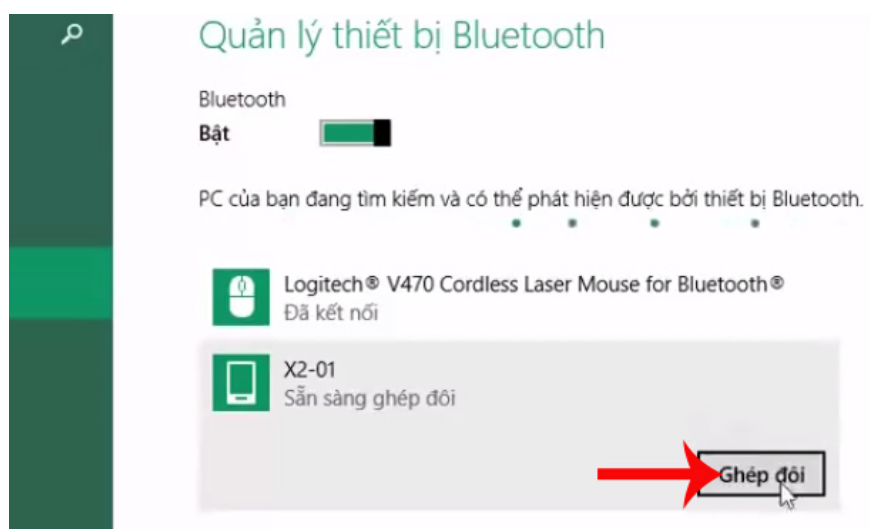
Go to the settings of PC and device settings, click **Bluetooth** . Looking to the right interface, users need to switch Bluetooth to **On** (On) mode to use it.

Soon the Windows computer will automatically search for Bluetooth devices so that we can choose the connection.

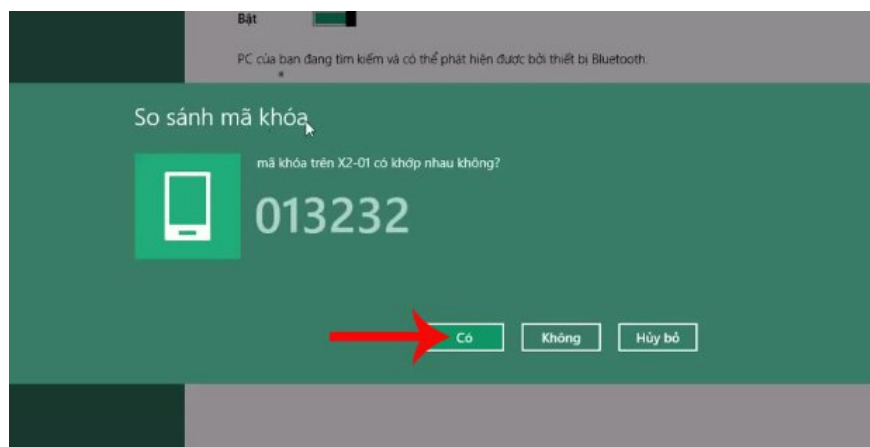


Step 4:

Click on the device you want to connect and click on Pair.

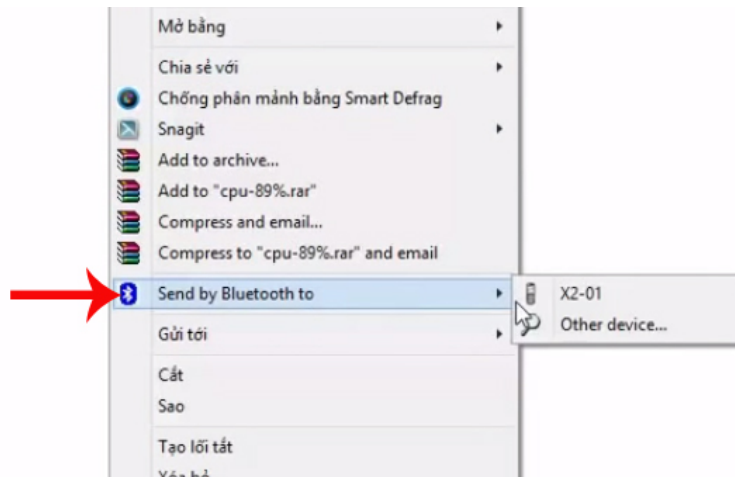


We wait a while for the two devices to connect to each other. Then you will see a **connection code** as shown below. Click **Yes** (Yes) in both connected devices.

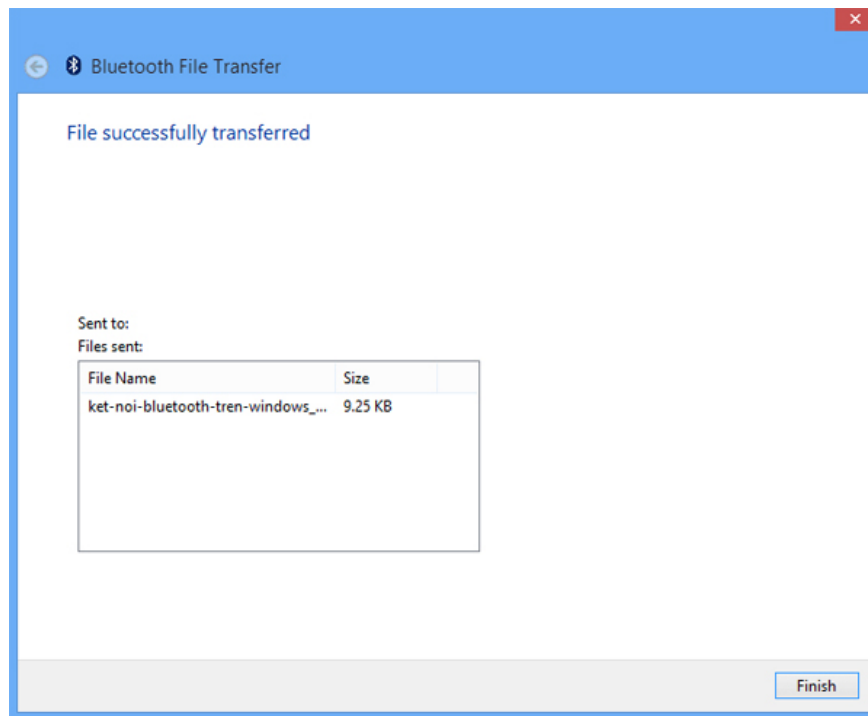


Step 5:

So 2 devices are connected. To send data, simply right-click on the data and select **Send by Bluetooth** to the connected device before to send.



Wait for the data transfer process to finish.



3. Connect Bluetooth device on Windows 10:

To start Bluetooth on a Windows 10 computer we will have 2 ways to use the keyboard or set the Bluetooth option in the system settings on Windows 10.

Method 1:

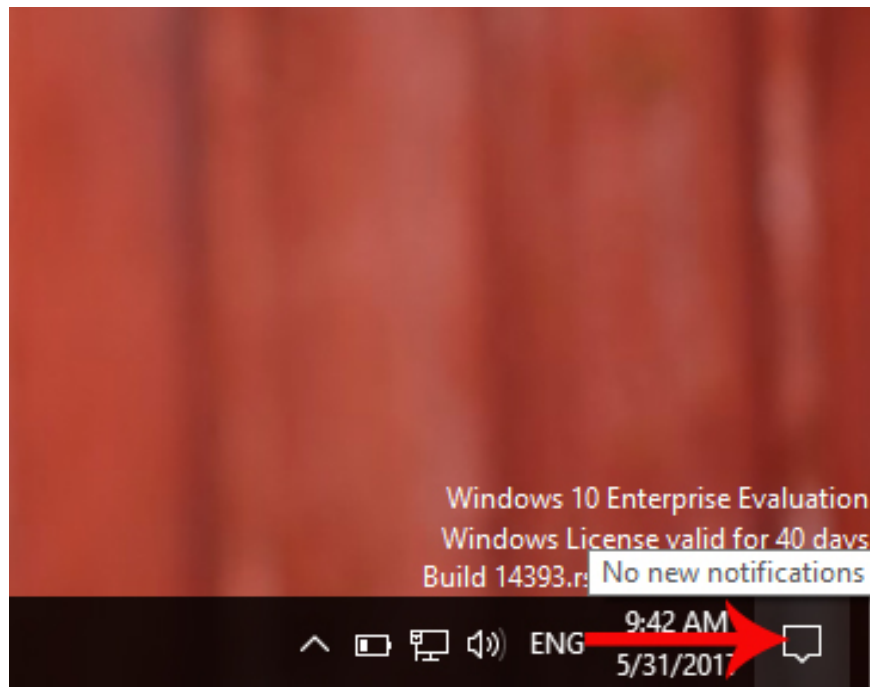
Currently some laptops support **Fn** + shortcut **keys from F1 to F12** to turn on or turn off Bluetooth on the computer.

Method 2:

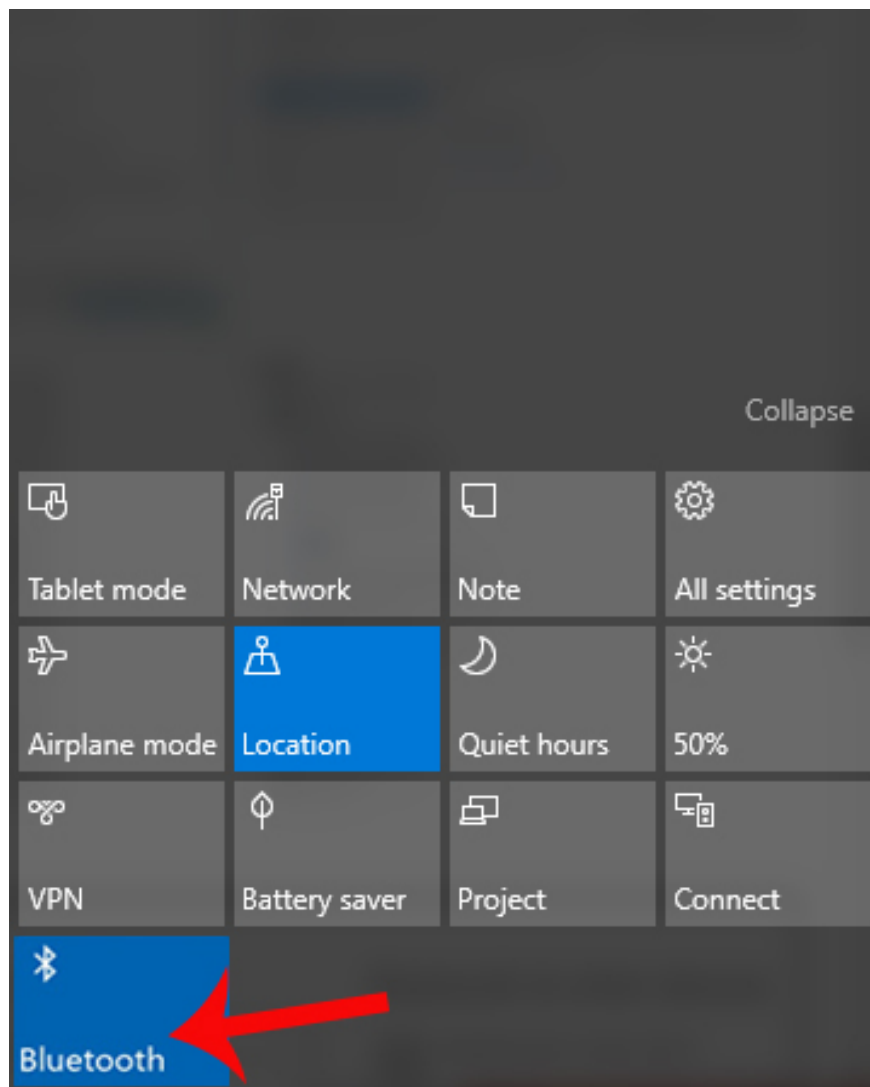
If your computer does not have Bluetooth function keys enabled, we can boot from Bluetooth settings on the system.

Step 1:

First click on **the Action icon** or press the Windows + A key combination to open the Action Center.

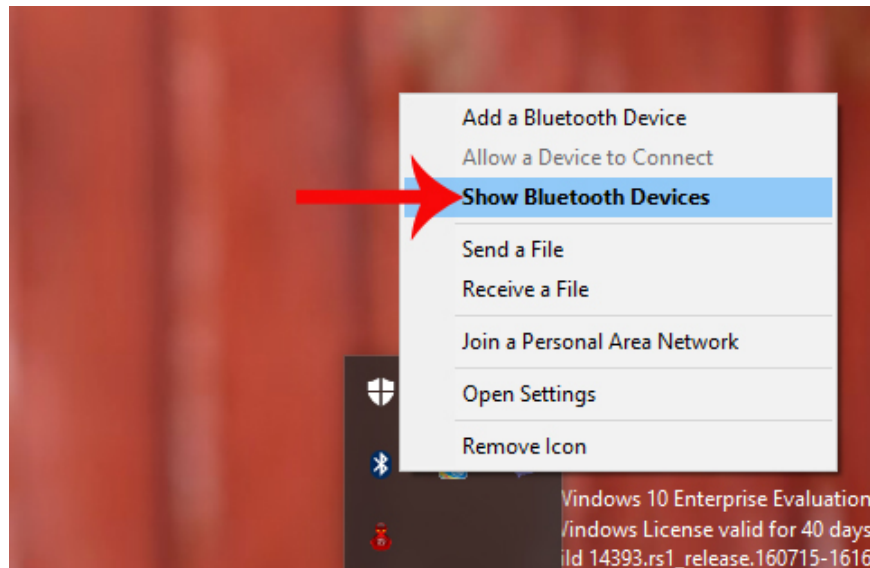


Appears quick settings including Bluetooth. You click on **the Bluetooth icon** to switch to **On mode** .



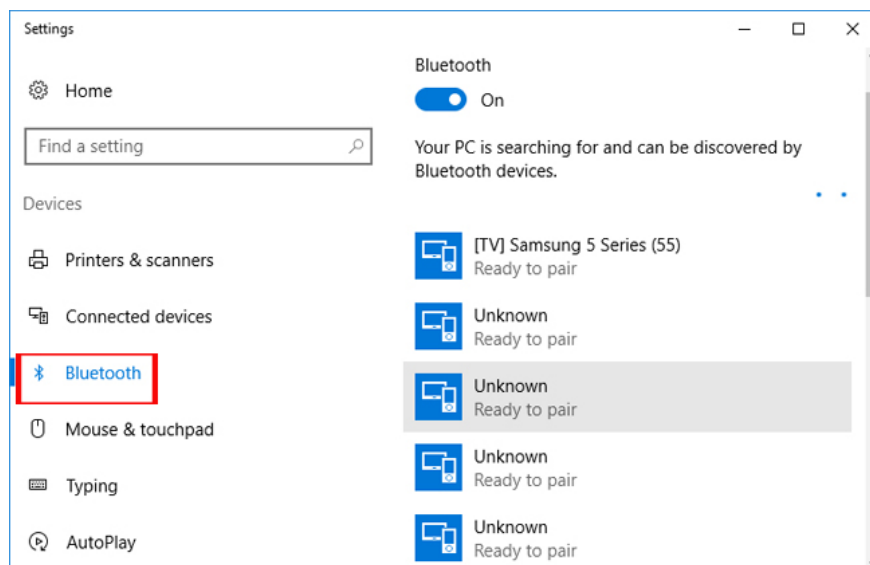
Step 2:

Soon you will see the Bluetooth icon in the system tray. **Right-click** the icon and select **Show Bluetooth Devices**

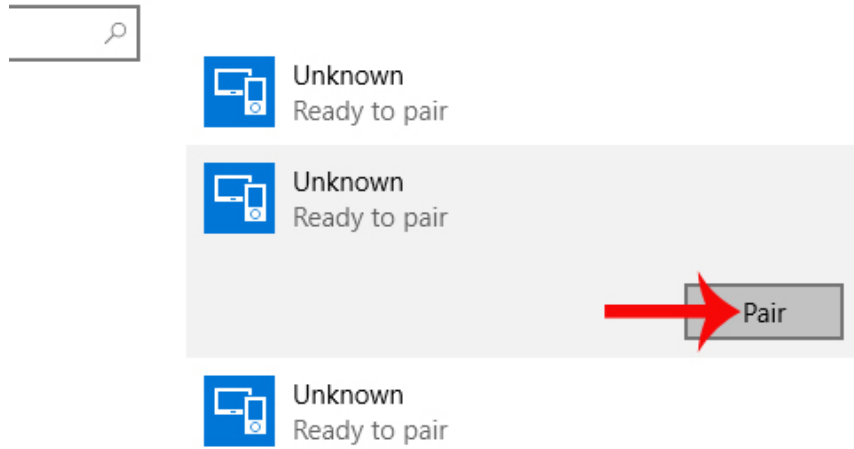


Step 3:

Right after that, the user will be transferred to the setup interface to install Bluetooth on the Windows 10 system. Looking at the right interface, the computer will scan Bluetooth devices to choose to pair.



Click on the device you want to pair and then **click Pair** to proceed with the connection. You will also receive the code for the 2 connected devices. The last thing is to send data as a guide to connect the Windows 8 Bluetooth device above.



Above is a tutorial on how to turn on Bluetooth on Windows 7, 8, 10, connect Bluetooth devices to Windows computers. In case the Windows 8 computer does not find Bluetooth, you need to check whether Bluetooth is turned on, or install the Bluetooth driver. For Windows 10 computers, just update the driver. To update the driver automatically on the computer, readers refer to the article below.

1. How to automatically update drivers on Windows using SnailDriver
2. 5 basic ways to update, update drivers for computers

I wish you all success!

You finished reading the article "**How to connect a Bluetooth device on Windows**" edited by the [TipsMake](#) team. We hope this article has provided you with many useful tech tips and tricks. You can search for similar articles on tips and guides. Thank you for reading and for following us regularly.