

How to configure Xiaomi 3C WiFi router to be repeater

If you are facing WiFi signal range problem indoors and office areas, the range of the main WiFi router is low. You can increase the WiFi range by using Mi 3C's Repeater mode setting without changing the main WiFi name and password.

Mi 3C WiFi Router manufactured by Xiaomi brand. Xiaomi 3C is a home WiFi router with multiple Ethernet ports and achieves 300Mbps wireless speed with dual external Omni antennas. Xiaomi MiWiFi Mini Router supports multiple wireless modes such as Client, Access Point, WISP and Repeater to extend WiFi signal range.

If you are facing WiFi signal range problem indoors and office areas, the range of the main WiFi router is low. You can increase the WiFi range by using Mi 3C's Repeater mode setting without changing the main WiFi name and password. Configure the Mi 3C router as a WiFi repeater to increase the signal quality in the dead zone.

You need to login router settings with a wired connection to change the wireless extender mode.

Login to your Mi 3C router

The first step is to connect the router with an RJ45 LAN cable from the router's Ethernet port to your PC or laptop's LAN port. Follow the steps to physically connect to the wireless router.

1. Use a LAN cable to connect from a computer LAN port
2. Power on the router with the adapter supplied in the box.
3. Default login settings for Mi 3C routers
 1. Default login URL of Mi 3C: **http://miwifi.com** or default login IP address: **192.168.31.1**
 2. Default username and password: **admin**

Change the WiFi mode to Range Extender mode

Open a web browser and go to default login IP address **192.168.31.1** or login URL and press **Enter** key .

After a few seconds, you will see the Xiaomi router login page with the option of username and password to authenticate.

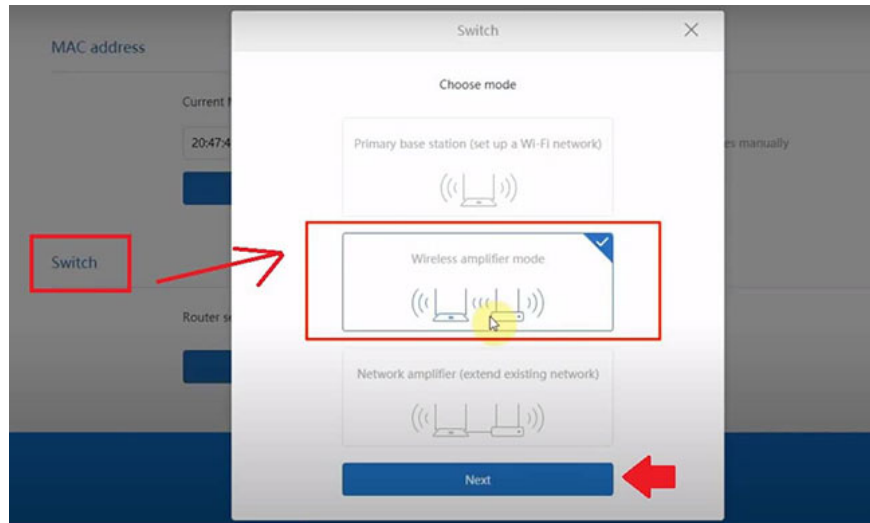
After logging into the router settings page, you can see the settings menu at the top.

Go to **Settings** option .

Scroll the page down and see the last '**Switch**' option to change wireless modes.

Choose your mode

Select **Wireless Amplifier mode** for Range Extender mode.

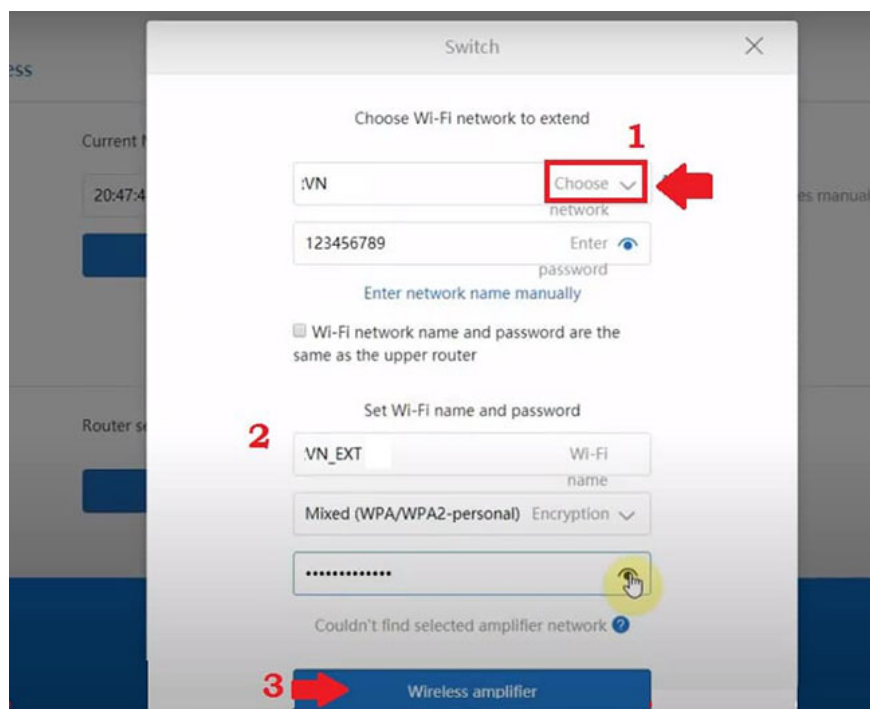


Click the **Next** button to connect the repeater to the main WiFi router.

Select WiFi networks to expand

Step 1. Press the selector arrow button to select the name of the primary WiFi network that you want to extend with Mi router.

1. **VN** (Main WiFi name)
2. **Password** - WiFi password for existing WiFi network to allow connection from repeater.



If you want, use the same WiFi name for the repeater device with the existing WiFi.

Select the option '**Wi-Fi Network name and password are the same as the upper router**' .

Step 2. Use different names and passwords for the WiFi network extender.

1. **VN-ExT** (set the SSID for the repeater signal)
2. **Password** - Set the password for the network repeater

Step 3. Press the **Wireless amplifier** button to save the settings.

In the next step, you will get the SSID name of the extender and detailed LAN IP address of the router.

Press the **OK** button to confirm and save the settings.

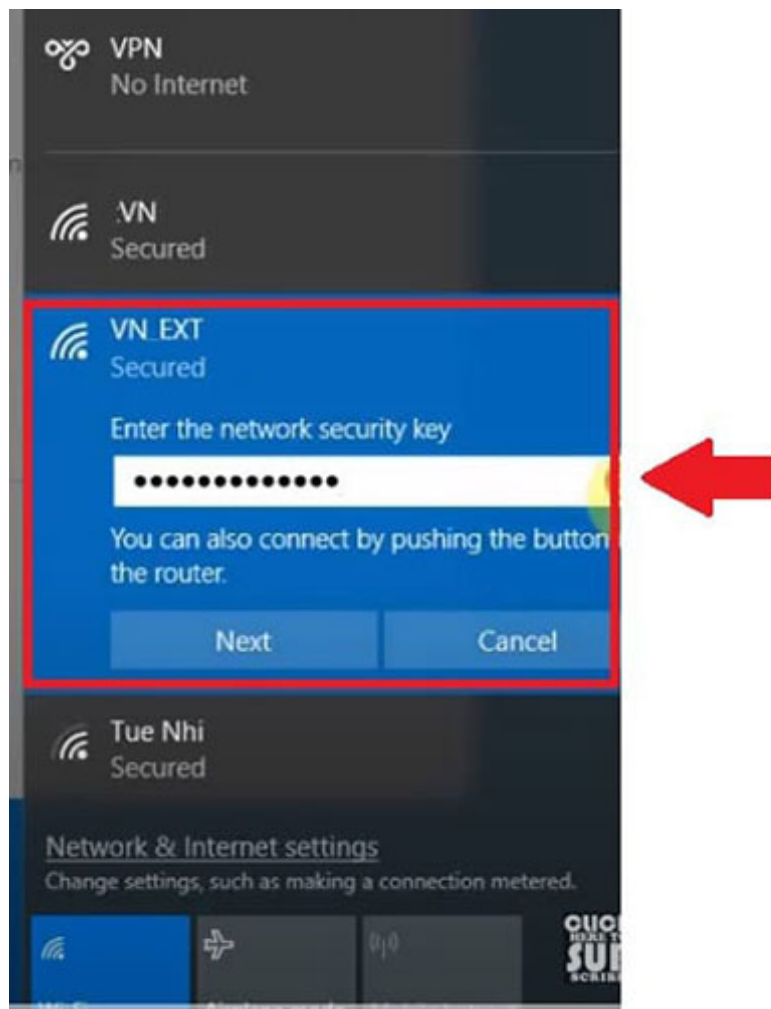
Wait a few seconds until the repeater starts up and connect to the main WiFi router.

Connect the Mi 3C router in Repeater mode

To check if the new WiFi signal booster device SSID has started working, go to the WiFi option on your mobile or laptop.

You will get a new WiFi SSID name that you have configured for the network repeater name.

Use the extender password as configured in the previous steps.



Check the repeater state

Make sure that the repeater device is connected to the main WiFi network.

Re-login your Mi router following the steps above.

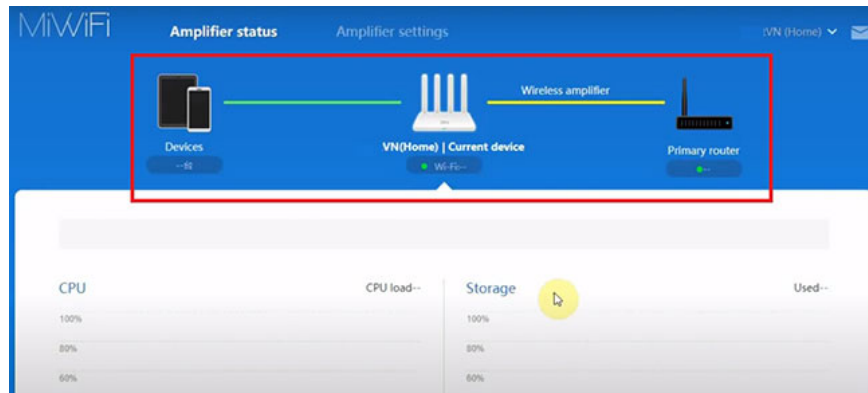
See Amplifier status display is connected to the main router and mobile device, laptop is connected to the SSID of the amplifier.

If you have any problems logging in to Mi router, you can follow the steps below.

IP address of Xiaomi Mi WiFi router is not working

You may be using Mi router after a long time, or maybe you forgot your IP address or password / username after setting up.

If the IP address that is logged into the Mi WiFi router **192.168.31.1** does not work, the cause of the network error is responding or the IP address does not belong to the router. Please follow these steps to fix Mi router login error.



1. Make sure that the LAN cable of your laptop / computer is connected to the LAN port of the router. The WAN port will not access the router settings until WAN access is enabled.
2. Make sure to configure your PC / laptop LAN in DHCP mode to get IP address automatically from Mi router.
3. See the login IP address and default settings printed on the router label.
4. If you still have problems, try factory **reset** with the **Reset** button .

You finished reading the article "**How to configure Xiaomi 3C WiFi router to be repeater**" edited by the [TipsMake](#) team. We hope this article has provided you with many useful tech tips and tricks. You can search for similar articles on tips and guides. Thank you for reading and for following us regularly.