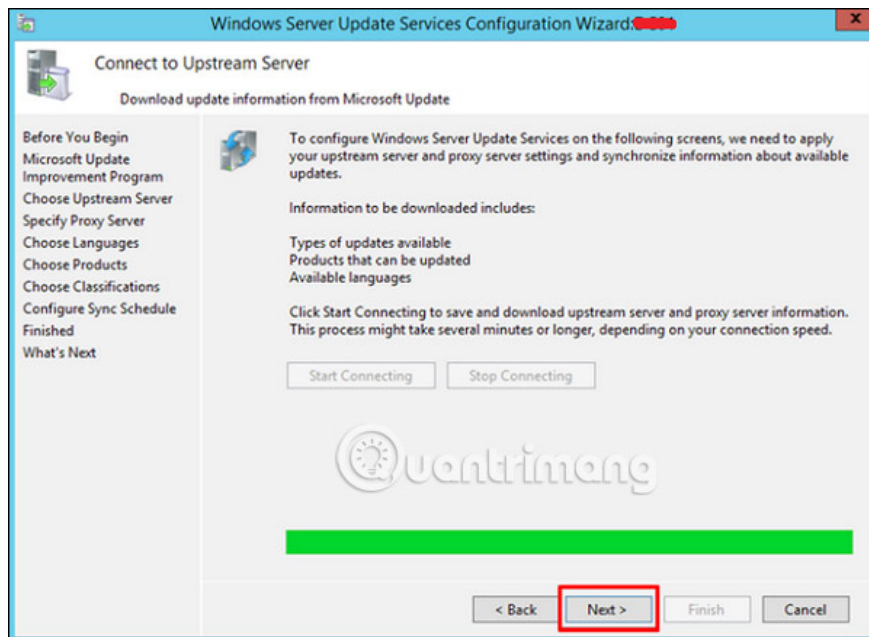


How to configure and adjust WSUS in Windows Server 2012

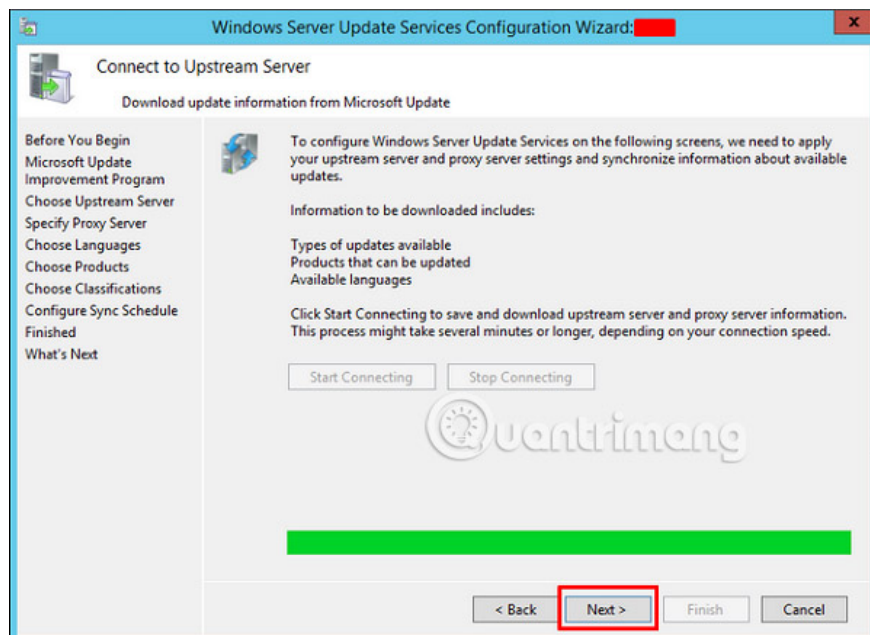
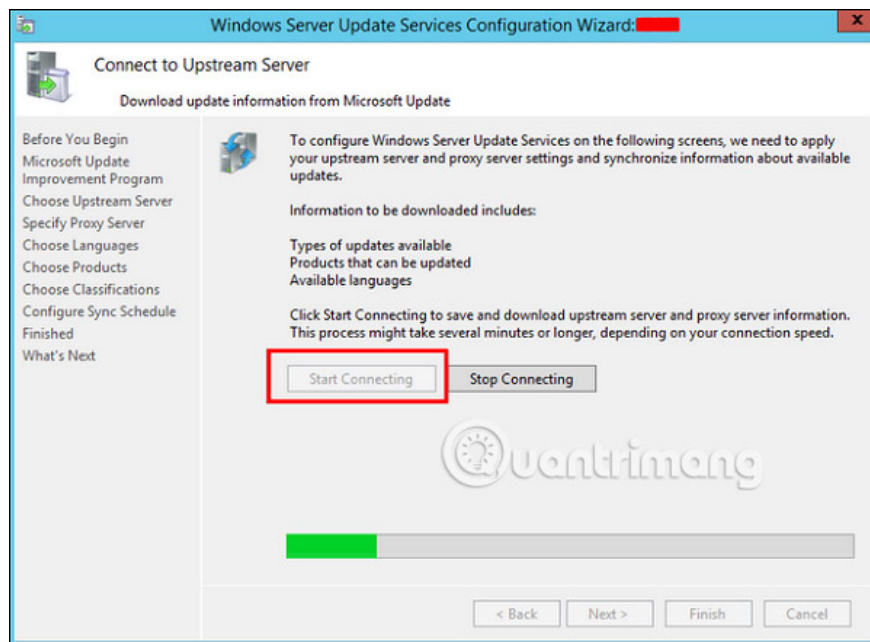
In this article, we will see how to configure and adjust WSUS in Windows Server 2012.

In this article, we will see how to configure and adjust WSUS in Windows Server 2012. Follow these steps to configure it:

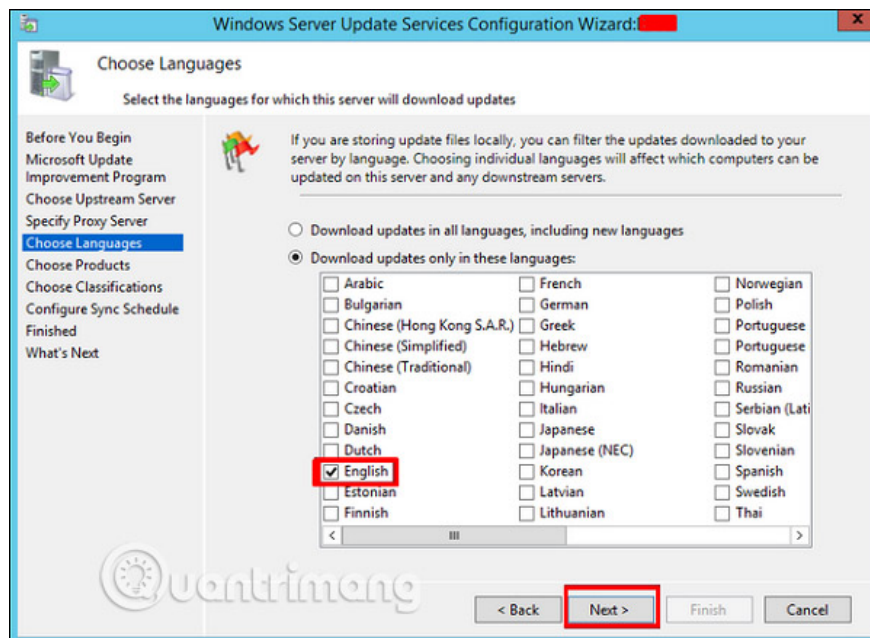
Step 1 - When you first open it, you should go to '**Server Manager**' ? **Tools** ? **Windows Server Update Services** , then the Configuration wizard (the configuration wizard) will be opened. Click **Next** .



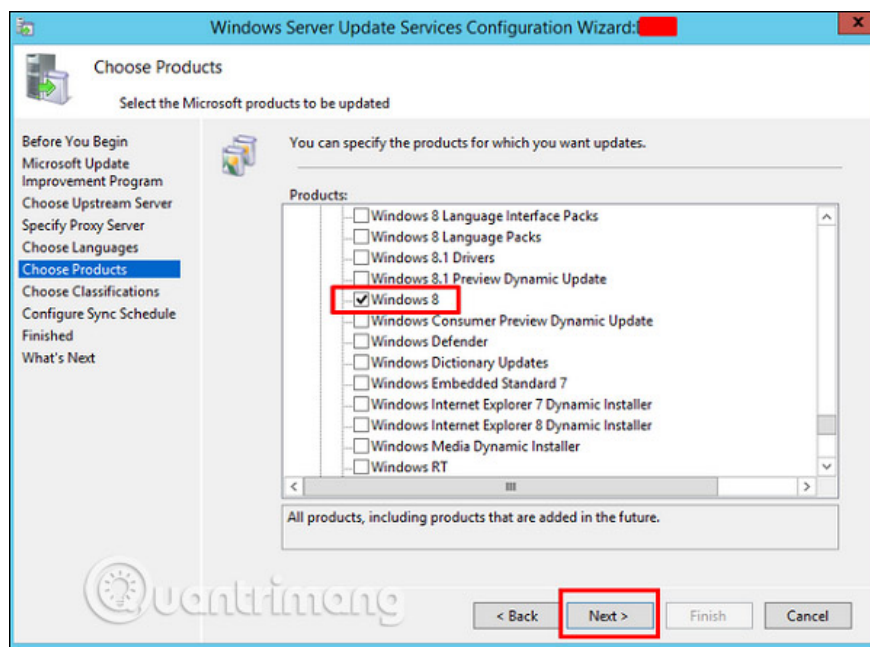
Step 2 - Click '**Start Connecting**'. Wait until the green bar is full and then click **Next** .



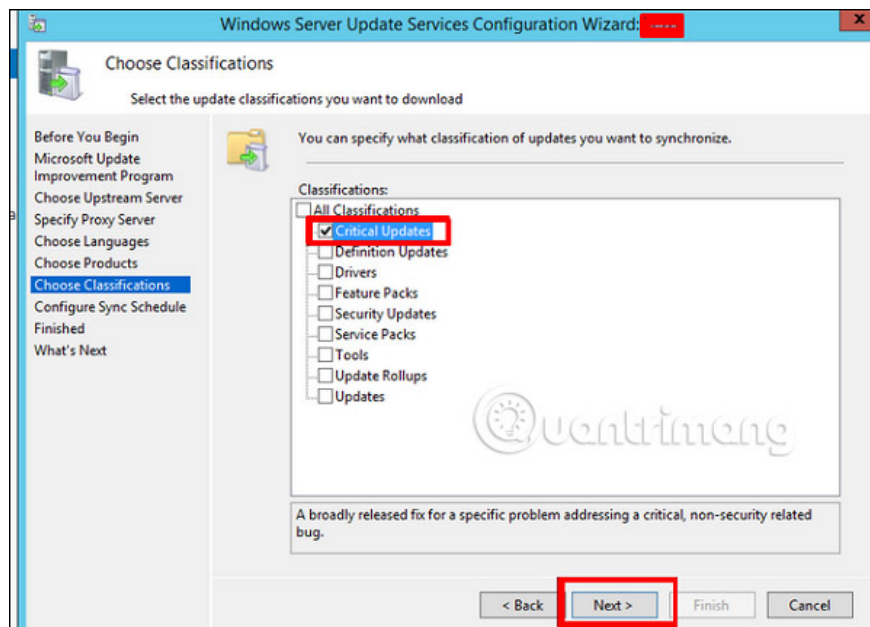
Step 3 - Select the update language, for example, **English** and then select **Next** .



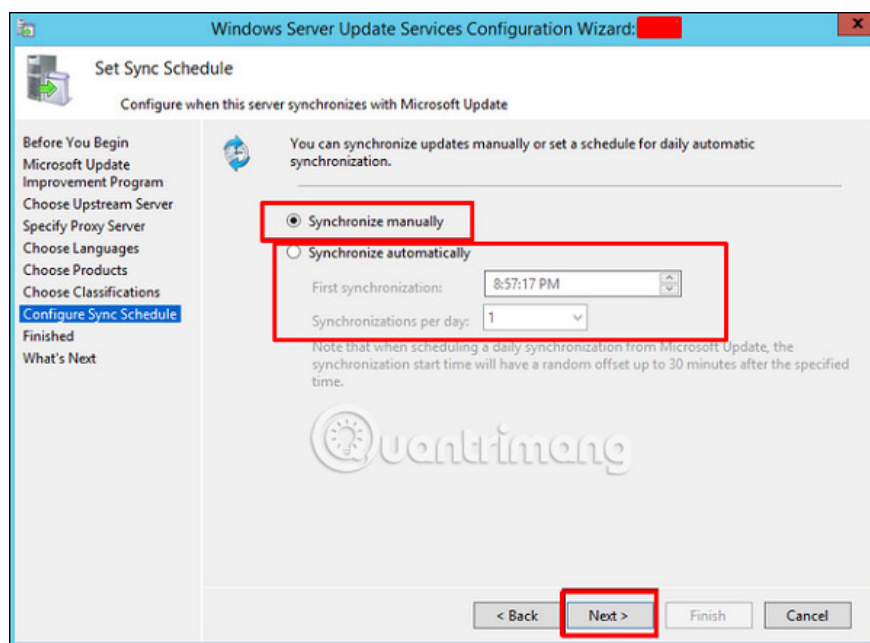
Step 4 - Select all products you want to update. This section is for Microsoft products only and you should select all related products. Then select **Next** .



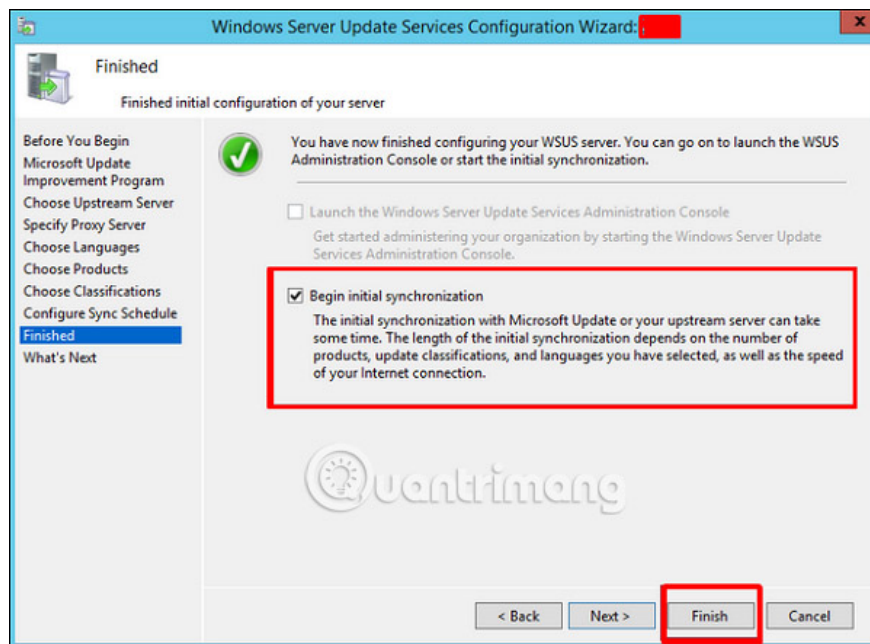
Step 5 - Select the updated category to download. If you have high-speed internet, select all, otherwise just select " **Critical Updates** ".



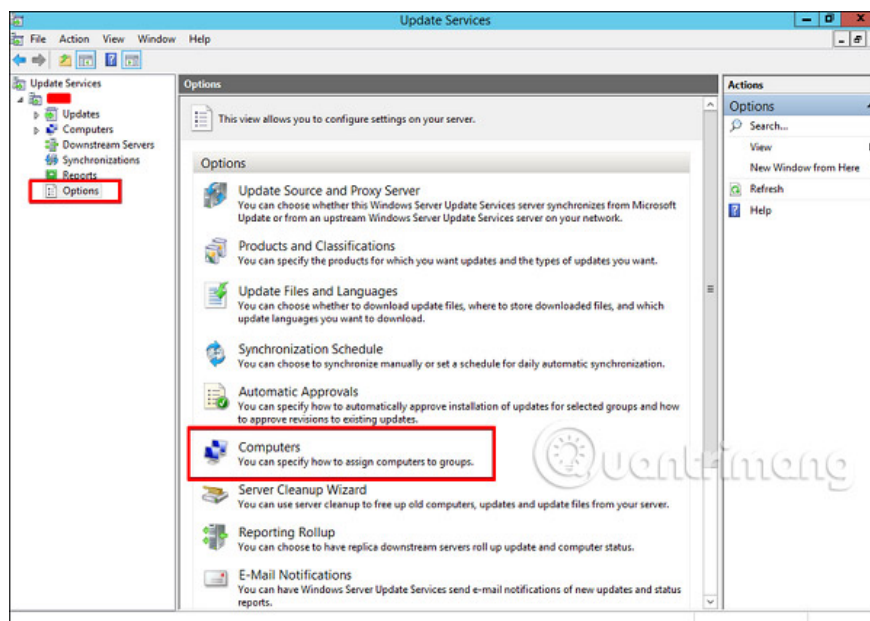
Step 6 - Now, you should schedule automatic updates at night and click **Next** .



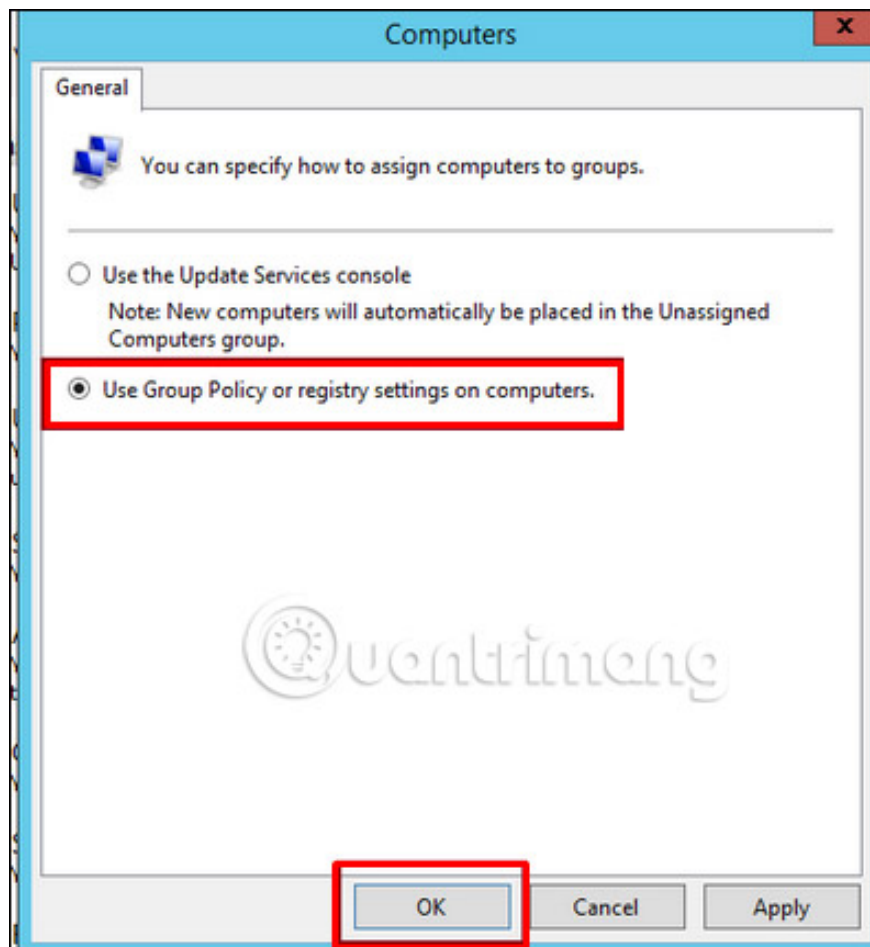
Step 7 - Check the ' **Begin initial synchronization** ' box and select **Finish** .



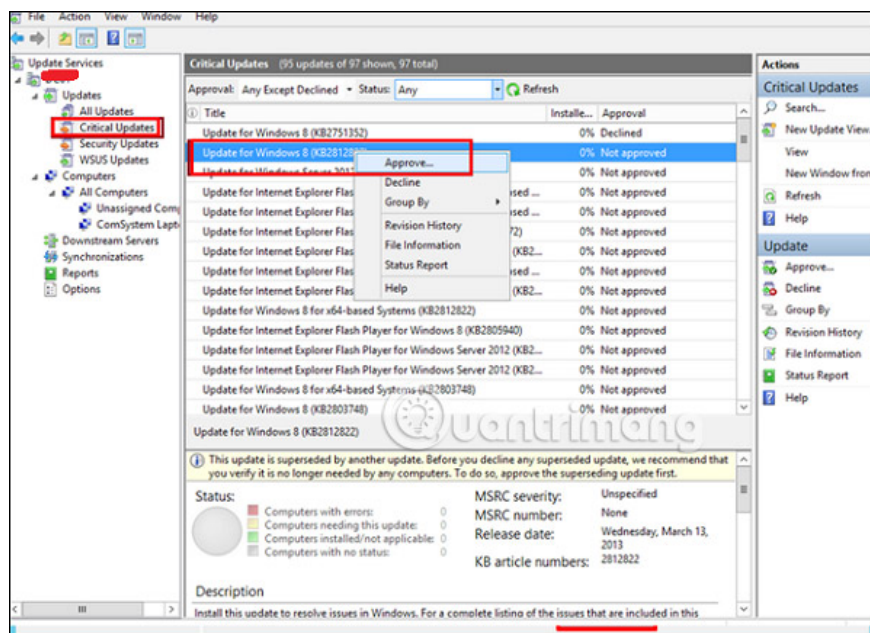
Step 8 - Now, the WSUS console will open and you must add the computer to WSUS. To do this, go to **Options ? Computers** .



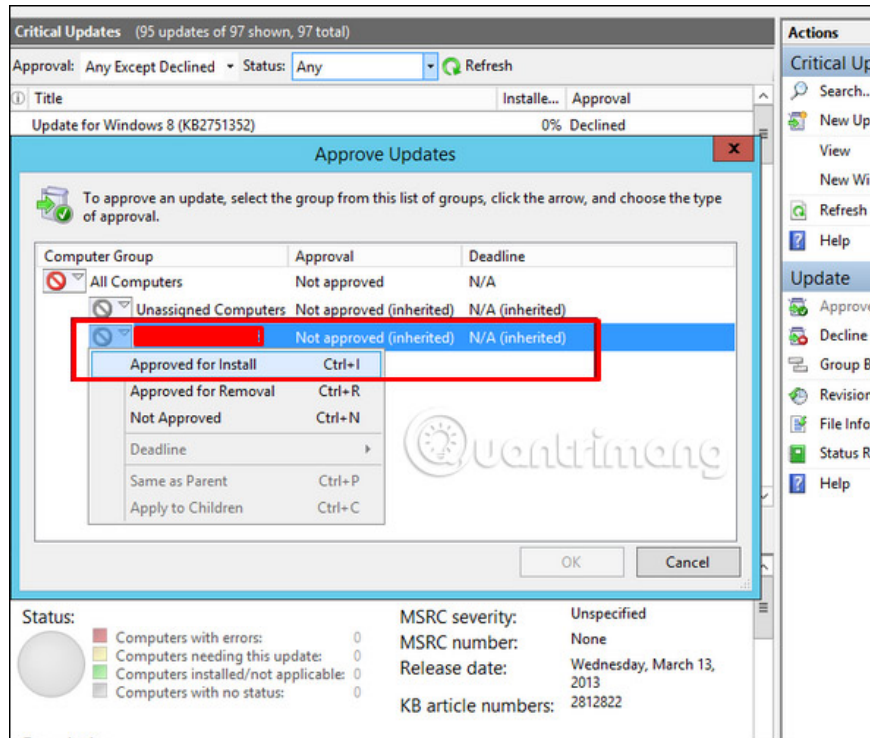
Step 9 - If you have a Domain Controller environment, select the second option as in the example case. If not, select the first option and then click **OK** .



Step 10 - After you have done all of the above, you should approve the updates, similar to the way in the previous version. To do this, right-click the updates, then select **Approve** as shown in the screenshot below.



Step 11 - After that, you should click **Approve for install**, as shown in the screenshot below.



See more:

1. How to install WSUS in Windows Server 2012
2. How to install Hyper-V in Windows Server 2012
3. How to install IIS in Windows Server 2012

You finished reading the article "**How to configure and adjust WSUS in Windows Server 2012**" edited by the [TipsMake](#) team. We hope this article has provided you with many useful tech tips and tricks. You can search for similar articles on tips and guides. Thank you for reading and for following us regularly.