

How to Clear NPCscan Cache

NPCscan is a program add on created to enhance World of Warcraft. You can use the program to scan your character files and alert you to Non-Player Character (NPC). You can learn how to clear the NPCscan cache, in order to reset NPCscan to...

Part 1 of 3:

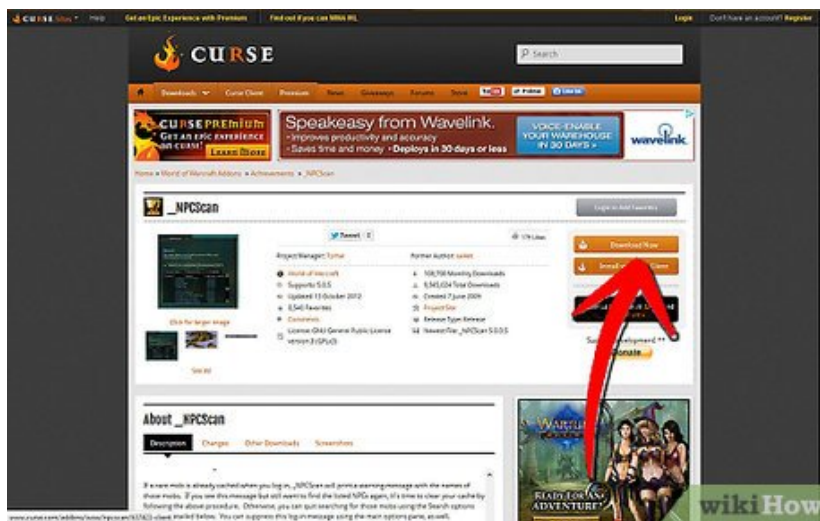
Download NPCscan

1.



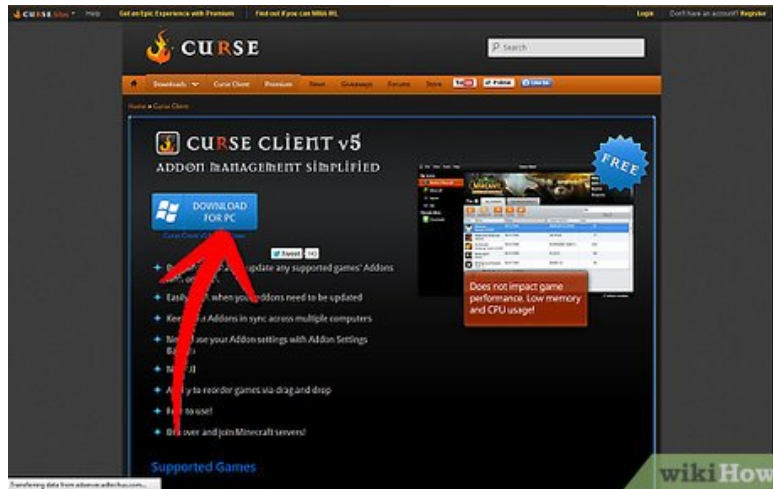
Go to <http://www.curse.com/addons/wow/npcscan> to find the NPCscan add on.

2.

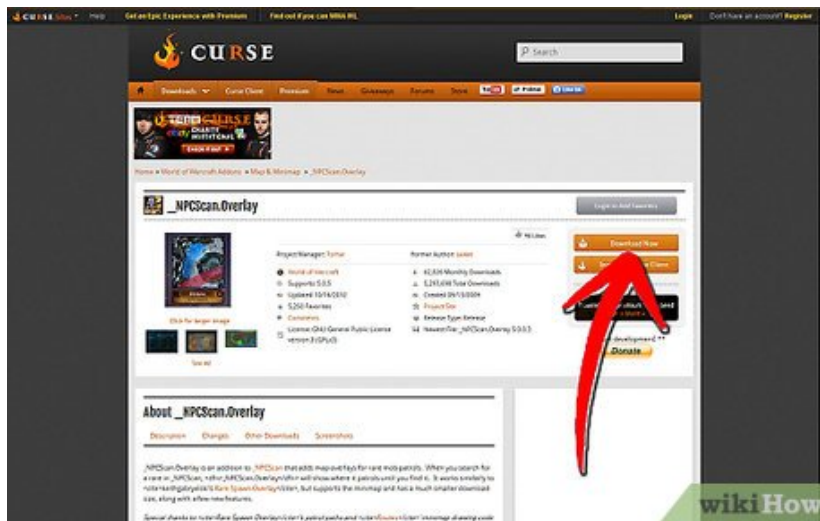


Click the "Download" button.

1. You may consider downloading the Curse Client to your desktop before downloading add ons. They can help you easily add on to World of Warcraft Gaming without having to do a manual installation of the file.



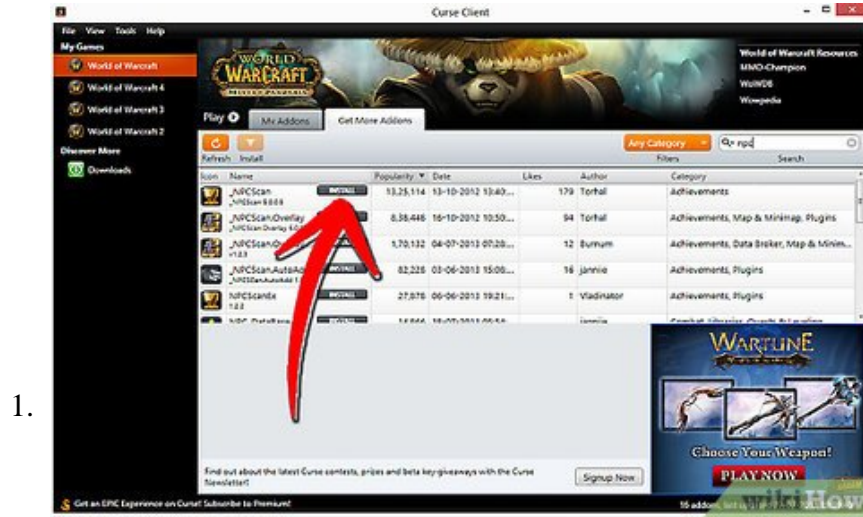
3.



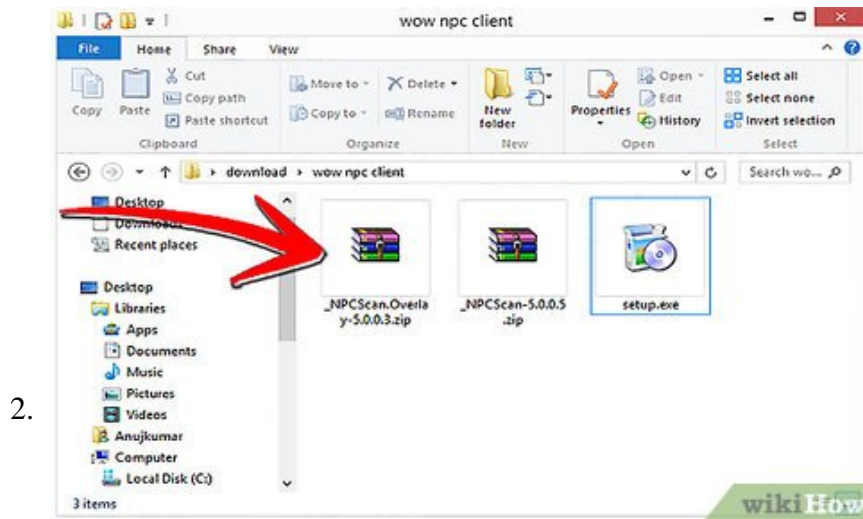
Consider downloading the NPCscan overlay to view a map of rare mob patrols. This is available at curse.com/addons/wow/npcscan-overlay

Part 2 of 3:

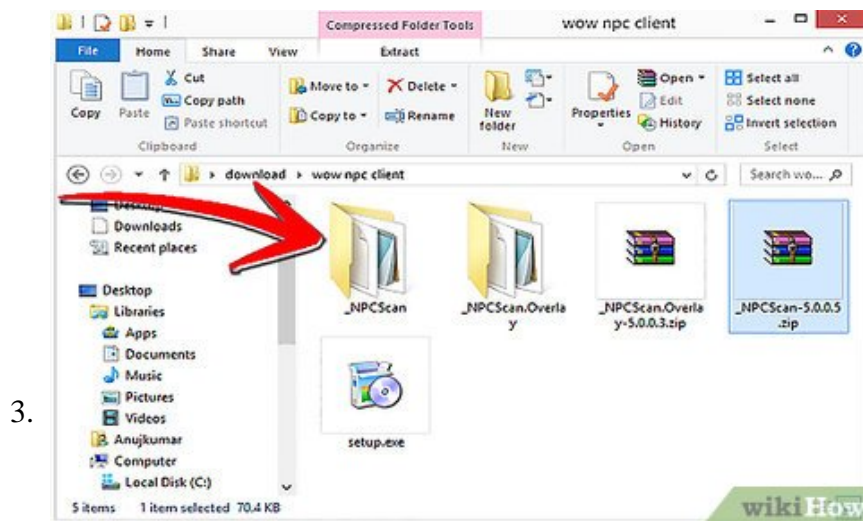
Install NPCscan



Click "Install" in Curse client if you want to install add-ons automatically.

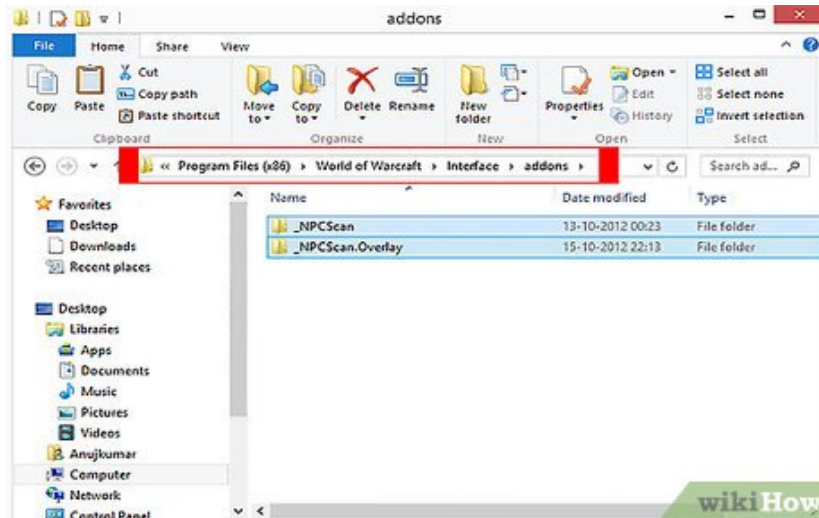


For manual install, Download and save the file to your computer. It will be in a zip folder.



Double click on the file to open it and extract it.

4.



Copy the extracted folder and paste it in Addons folder in the Warcraft install folder (*World of WarcraftInterfaceAddons).

1. Install/Download and extract NPCscan Overlay in the same manner, so that you can get access to the map. This will help further in obtaining an achievement, because it will show rare mobs in a visual way.



Part 3 of 3:

Clear NPCscan Cache

1.



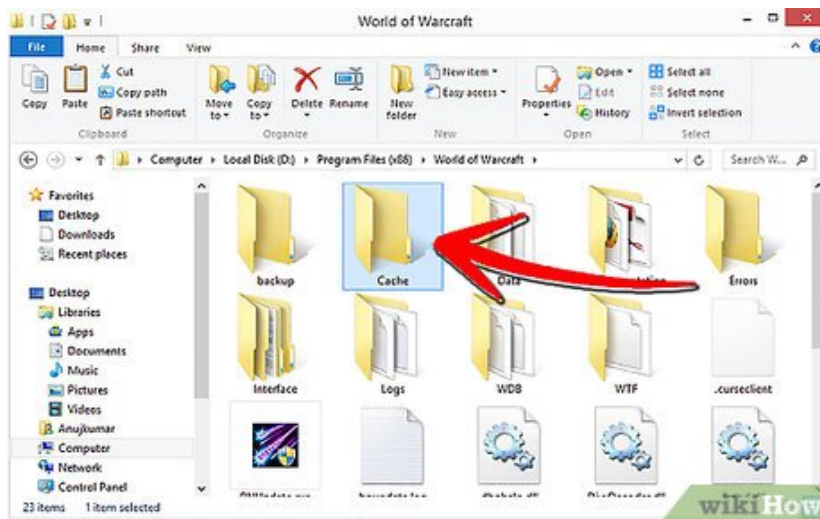
Wait for the loud warning indicating that NPC scan has found a non-player character.

2.



Exit your World of Warcraft program at the next chance you get.

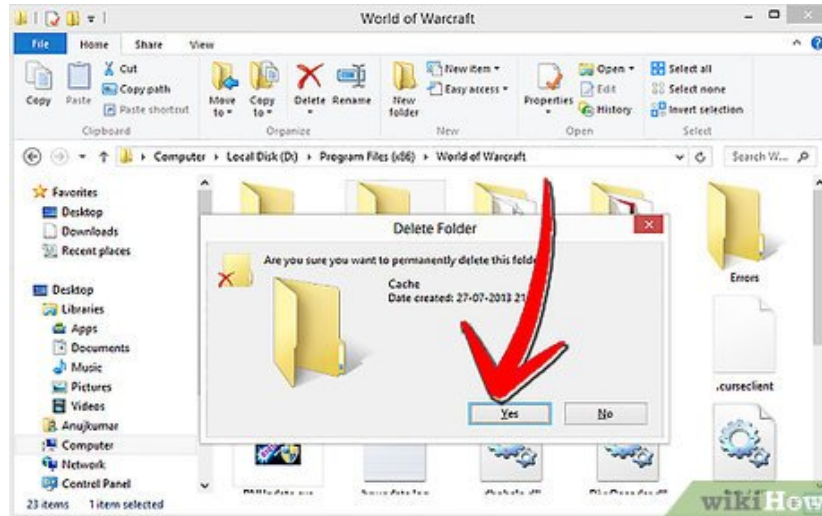
3.



Go to your directory of WOW files. Find the sub-folder that says "cache" in the keyboard (kbd) code.

1. It may also appear in this format: "C:Program FilesWorld of WarcraftCache"

4.



Delete the folder. Exit your WOW program files.

5.



Restart World of Warcraft. WOW will create a new cache when the next character is found. Delete your cache after each warning.

You finished reading the article "**How to Clear NPCscan Cache**" edited by the [TipsMake](#) team. We hope this article has provided you with many useful tech tips and tricks. You can search for similar articles on tips and guides. Thank you for reading and for following us regularly.