

How to Clean a Nespresso Capsule Coffee Maker

Nespresso is a famous brand of single-use capsule coffee makers. Although these coffee makers have a simple structure, they still need to be cleaned regularly. You should clean the drip tray and tablet container and change the water every day. Descale every three months to help deep clean and keep the machine operating stably.

Daily cleaning



Clean the drip tray every day. Every day, remove the excess water tray from the Nespresso machine and clean it with dish soap and a clean towel. Be sure to scrub away any residue that has accumulated on the tray. Then, rinse the tray with warm water and drain.

Next, wash the coffee capsule container in the same way.

If not cleaned properly, the drip tray will become a breeding ground for bacteria and mold.



Wash the water tank every day. While cleaning the drip tray, remove the water tank and lid from the machine. Clean both parts with mild dish soap, then rinse with warm water to remove all residue. If you only use your Nespresso machine occasionally, you might consider washing the lid and water tank every few days.

Let the lid and water tank air dry before attaching to the machine. You can also dry it with a clean towel.

Avoid leaving water standing in the tank as this can be an environment for bacteria and mold to grow.



Wipe your eyes to detect tablets with a soft cloth. Use a soft, dry cloth to gently wipe the tablet detection part. No need to use additional soap or water. You just need to wipe off the smudges on the lens.

The tablet sensor reading eye is located inside the machine. You can access this part after removing the maintenance module attached to the drip tray and cup holder.



Regularly clean the exterior parts. The coffee extraction part and the machine's outer shell need to be cleaned regularly. Wipe your coffee maker with a clean damp cloth a few times a week.

The extractor is where the coffee drips into the cup. Use a towel to wipe away any residue.

Wipe the outside edges and inside walls of the tablet container.



Avoid using harsh detergents with your Nespresso machine. When cleaning your Nespresso machine, never use strong, highly corrosive detergents. Use only mild and unscented detergents. You should use a soft cloth to wipe, avoid using sponges to clean.

Never immerse any part of the coffee maker in water or other liquid.

Descale the machine



Descale every three months. Nespresso machines need to be descaled approximately every 3 months. If you regularly drink coffee, descale after every 300 capsules. Some models have a function light that will flash to signal when the machine needs to be descaled.

If the machine is connected to an online application, the application will notify you each time it is time to descale.



Prepare the machine. Before starting, empty the tablets from the container. You also need to clean the drip tray. Then, reinstall the parts and turn on the machine.



Set the coffee maker to descaling mode. Depending on the machine model, you need to press different buttons to start the descaling mode. The buttons will flash and you can release your hand when you hear a 'beep' sound. Descaling mode will start.

The VertuoLine series has a button that you hold for about 7 seconds.

The Pixie, Inissia and CitiZ series have two flashing buttons that you need to hold down at the same time for about 3 seconds.

With the Prodigio model, hold down the three coffee making buttons at the same time for about 6 seconds.



Pour the descaling solution into the water tank. Pour a packet of Nespresso descaling solution into the water tank. After that, add 0.5 liters of water. Close the lid and place a mug large enough to hold all the water in the tank under the coffee maker.

You can buy descaling solution on the Nespresso website.



Make your own descaling solution. If you don't want to buy a commercial descaling solution, you can make your own and put the mixture into the water tank similar to above. Before using a homemade solution, check the user manual or call the manufacturer to make sure the product is safe for your machine.

You can make your own descaling solution using citric acid. Mix 1 part citric acid into 20 parts water. Additionally, lemon juice or vinegar are also suitable options. You can dissolve either of these solvents with water in a 1:1 ratio.

If you use citric acid or lemon juice, wash the machine two more times before making coffee. If you use vinegar, you will need to run the wash cycle 5 more times to get rid of the smell.



Start the descaling process. Press any flashing button to start the descaling process. The solution will pass through the machine and drip into the water catchment below the coffee extractor.

The machine will stop dripping water through the extraction unit when the cycle is complete.

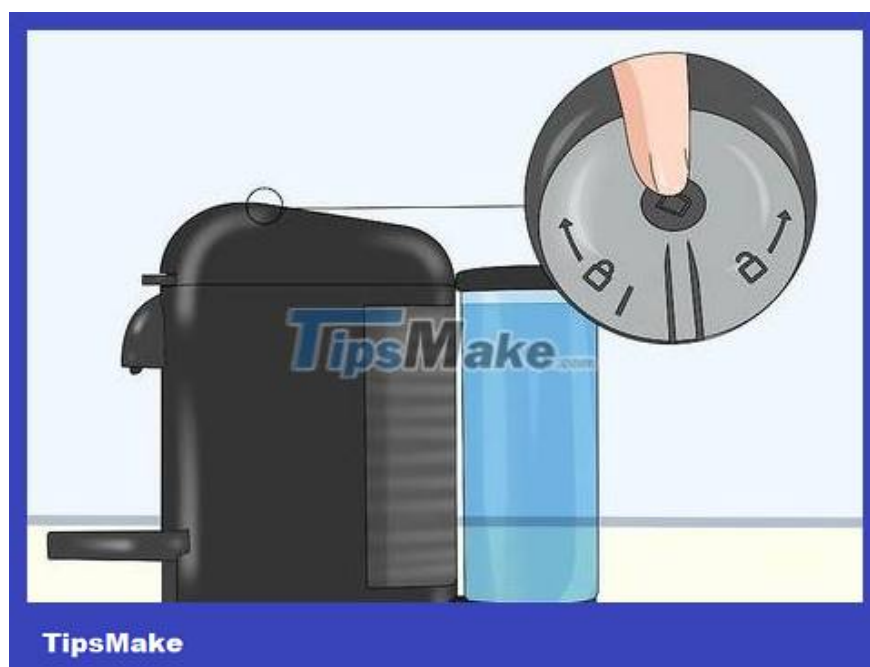


Repeat the descaling process. Pour the solution in the mug back into the water tank and proceed with descaling again. Press one of the flashing buttons to start. The machine will operate similarly as before. After extracting all the water in the tank into the coffee cup, the coffee maker will stop.



Wash all parts. Pour the solution after descaling. Remove the water tank, excess water tray and cup holder and rinse with warm water. You need to completely wash away any remaining descaling residue on the machine's parts.

After cleaning and drying the parts, reinsert them into the machine.



Machine wash. Fill the tank with clean water and place the cup under the coffee extractor. Press one of the flashing buttons to start rinsing the machine with water. The descaling solution will be washed away from the machine. Pour out the water in the mug when finished.

Put clean water into the tank and press the button with the flashing light to wash the machine again.



Exit descaling mode. After washing the machine with water twice, you have completed the descaling process. At this point, press all the buttons until the machine makes a 'beep' sound signaling that descaling mode has been exited.

Let the machine dry for at least 10 minutes before using.

You finished reading the article "**How to Clean a Nespresso Capsule Coffee Maker**" edited by the [TipsMake](https://www.tipsmake.com) team. We hope this article has provided you with many useful tech tips and tricks. You can search for similar articles on tips and guides. Thank you for reading and for following us regularly.