

# How to choose GPU for each application on Windows 10

Windows 10 now allows users to select GPUs for a game or other applications from the Settings app. Previously, you had to use a special manufacturer tool like NVIDIA Control Panel or AMD Catalyst Control Center to assign GPUs to each individual application.

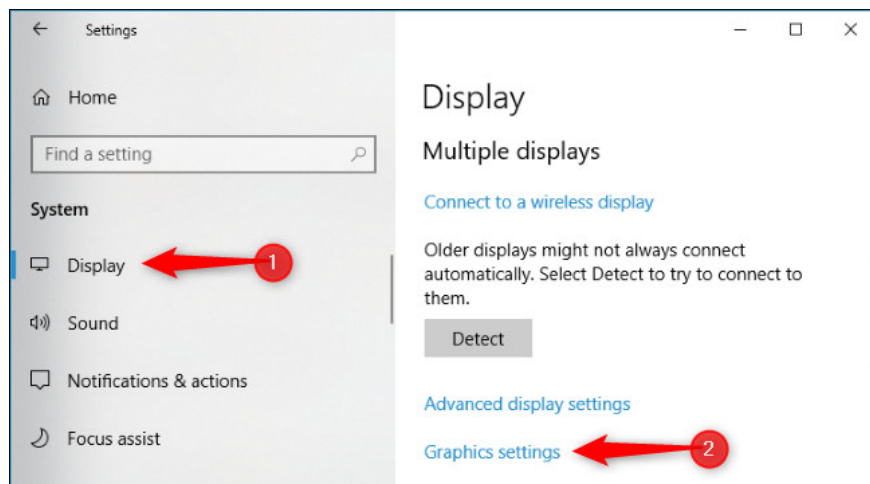
Windows 10 now allows users to select GPUs for a specific game or application from the **Settings** app. Previously, you had to use a special manufacturer tool like NVIDIA Control Panel or AMD Catalyst Control Center to assign GPUs to each individual application.

## How to assign an application to the GPU

To assign an application to the GPU, go to **Settings> System> Display** , scroll down and click on the **Graphics Settings** link.

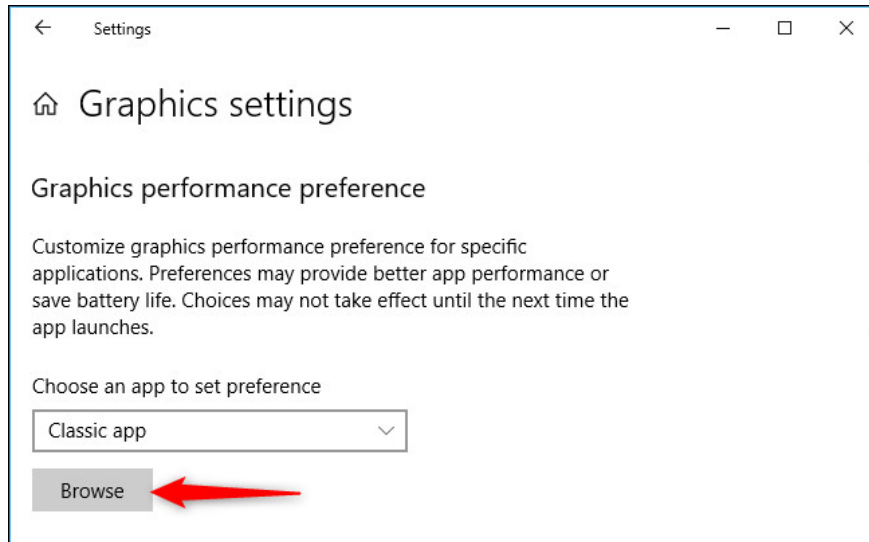
Select the application you want to configure. To select a traditional desktop game or application with an .exe file, select " **Classic app** ", click the " **Browse** " button and then find the .exe file on the system. Most of the application's .exe files are usually in the Program Files folder.

1. Troubleshoot problems that cannot run the .exe file

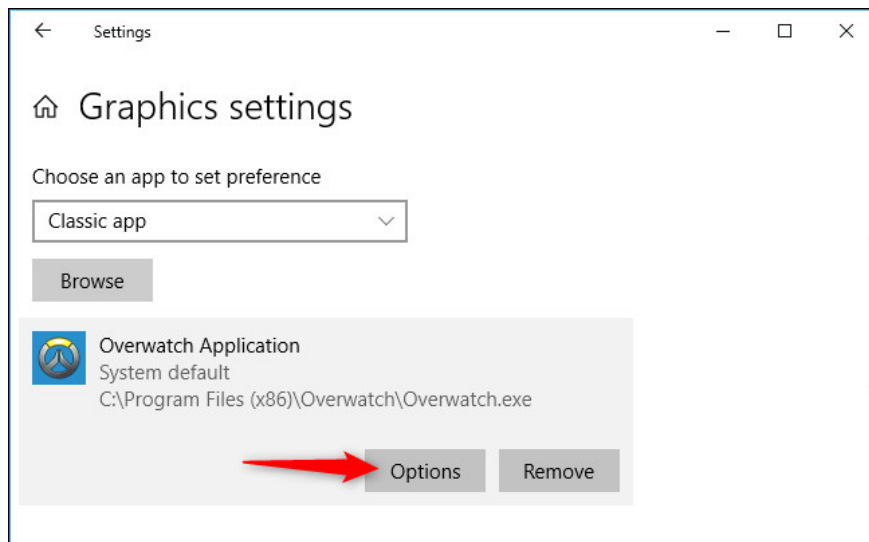


If you want to select a new Universal application, select Universal App, then select the application from the list and click the **Add** button. These applications are usually installed from Microsoft Store and the file extension is not .exe, called Universal Windows Platform or UWP application.

# 1. How to check the unified Windows application version (UWP) in Windows 10



After adding, the application will appear in the list on the **Graphics Settings** page, select the application you added and then click the **Options** button.

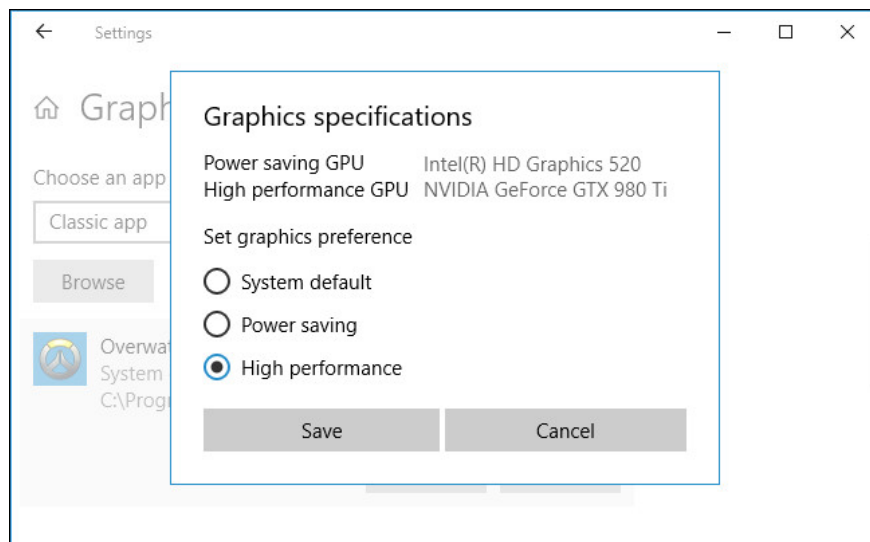


**System default** is the **default** GPU used for all applications, **Power saving** refers to low-power GPUs (usually on board video like Intel Graphics) and **High performance** is a **high-performance** GPU (usually a discrete graphics card like AMD or NVIDIA).

## 1. AMD and Nvidia - who is the king of GPU dominance?

The exact GPU used for each setting is displayed in this window. If there is only one GPU in the system, you will see the same GPU name under both ' **Power saving GPU** ' and ' **High performance GPU** ' options.

Click **Save** after completing the installation. If the game or application is currently running, you need to restart it to change the settings.



## How to check the application GPU is using

To check the application or game GPU that is in use, open Task Manager and activate the ' **GPU Engine** ' column on the **Processes** tab. Then you will know which application is using which GPU. You can see which GPU is associated with which number from the **Performance** tab.

The screenshot shows the Windows Task Manager Performance tab. The 'GPU Engine' column is visible, showing the GPU used by each application. The 'Overwatch ...' application is highlighted, showing it is using GPU 0 - 3D with 82.7% GPU usage.

Name	CPU	Memory	Disk	Network	GPU	GPU Engine
Blizzard Batt...	0%	145.9 MB	0 MB/s	0 Mbps	0%	GPU 0 - 3D
Firefox (7)	0.4%	1,449.3 MB	0.1 MB/s	0.1 Mbps	0.1%	GPU 0 - 3D
Notepad	0%	0.6 MB	0 MB/s	0 Mbps	0%	
Overwatch ...	13.5%	2,891.1 MB	3.8 MB/s	0.2 Mbps	82.7%	GPU 0 - 3D
paint.net	0.1%	85.7 MB	0 MB/s	0 Mbps	0.5%	GPU 0 - 3D
Settings	0.1%	38.2 MB	0 MB/s	0 Mbps	0%	

See more:

1. How to monitor GPU performance in Task Manager of Windows 10
2. Instructions for overclocking graphics cards for better gaming performance
3. Overclock CPU, GPU and RAM easily and safely

You finished reading the article "**How to choose GPU for each application on Windows 10**" edited by the [TipsMake](#) team. We hope this article has provided you with many useful tech tips and tricks. You can search for similar articles on tips and guides. Thank you for reading and for following us regularly.