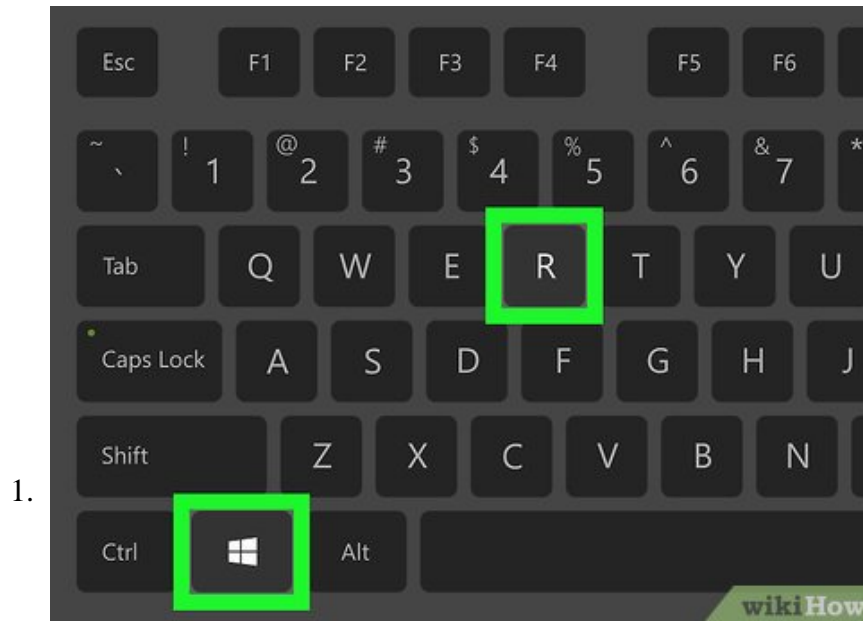


# How to Check Your Windows Version

If you're doing some troubleshooting for your computer, you may need to know what version and build of Windows you are running. This can help others narrow down your problems based on what version you are using. Finding your Windows...

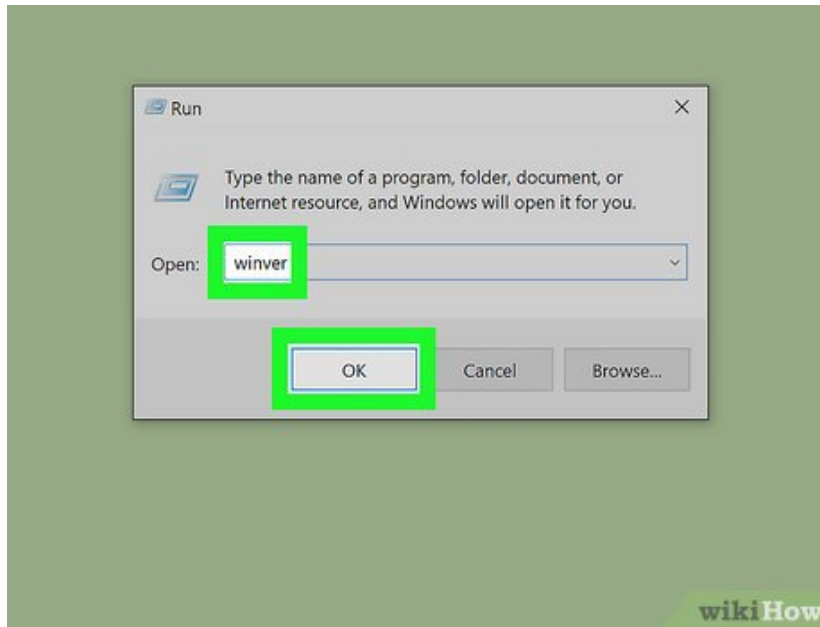
Part 1 of 3:

## Finding Your Windows Version in Run



Press the **Win** + **R** keys together. This opens the Run dialogue box on Windows.

1. Alternatively, you can right-click the Start menu button and click **Run**.



2.

Type **winver** and hit **Enter** or click **OK**. This opens "About Windows" in a separate window.



3.

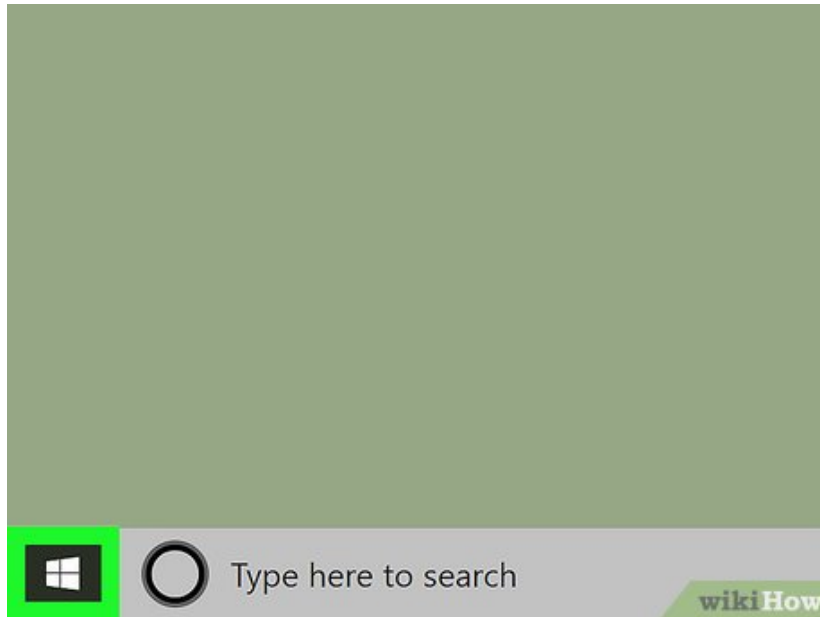
**Check your version.** Your Windows release will be displayed at the top of the About Windows window. Your windows version is displayed next to "Version" and your build number is displayed next to "Build" to the right of "Version. (e.g. "Version 6.3 (Build 9600)").<sup>[1]</sup> As of August 2019, the latest version of Windows 10 is Version 1903.

1. If you are not running the latest version of Windows, it's recommended that you Update Windows immediately.

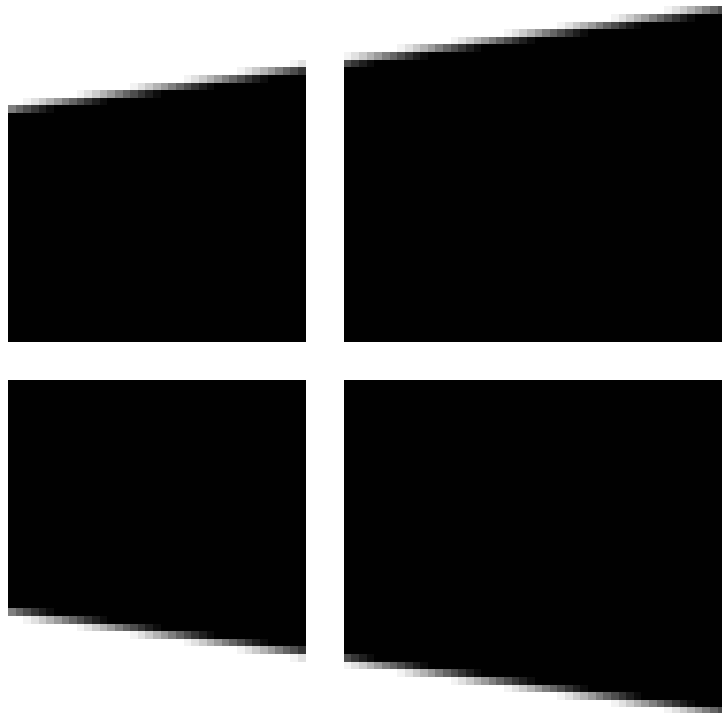
Part 2 of 3:

## Find Your Windows Version in Settings

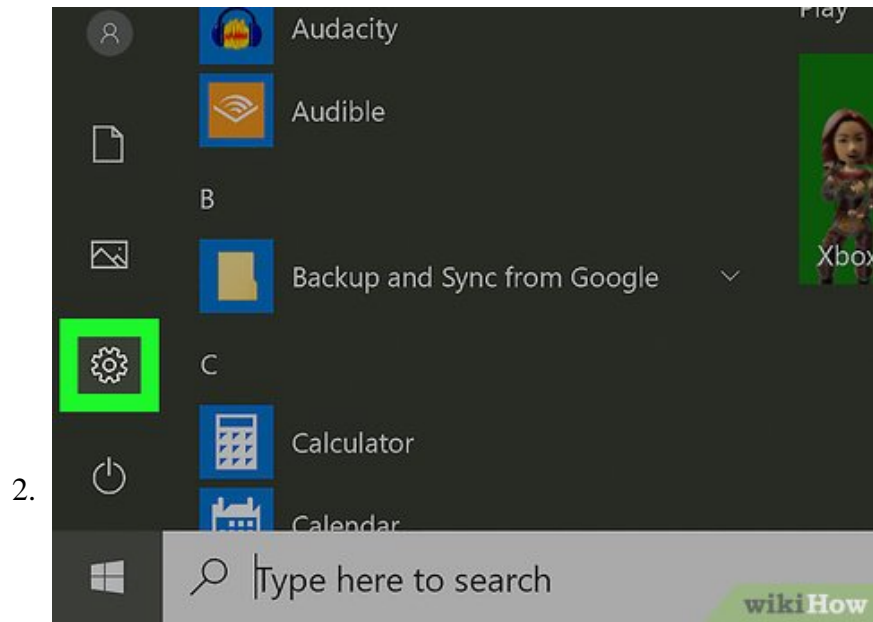
1.



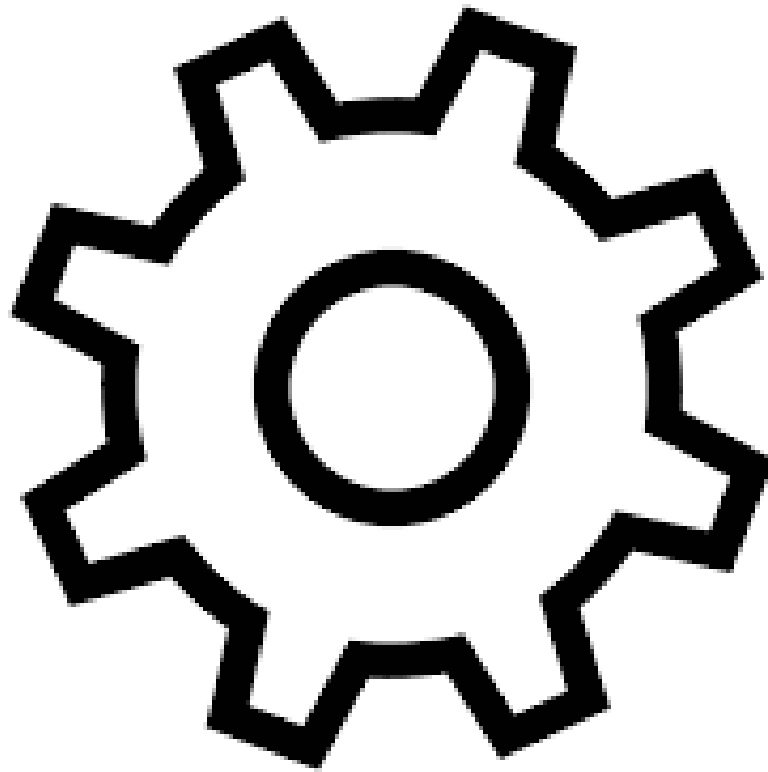
**Click the Windows Start menu**



. It's the button with the Windows logo. By default, it's in the lower-left corner in the Windows taskbar. This displays the start menu.

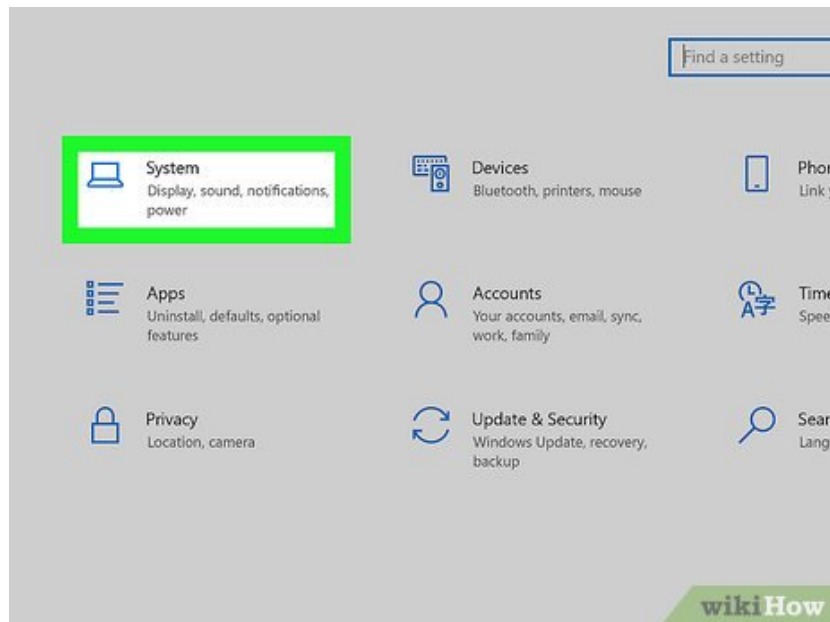


**Click the gear icon**



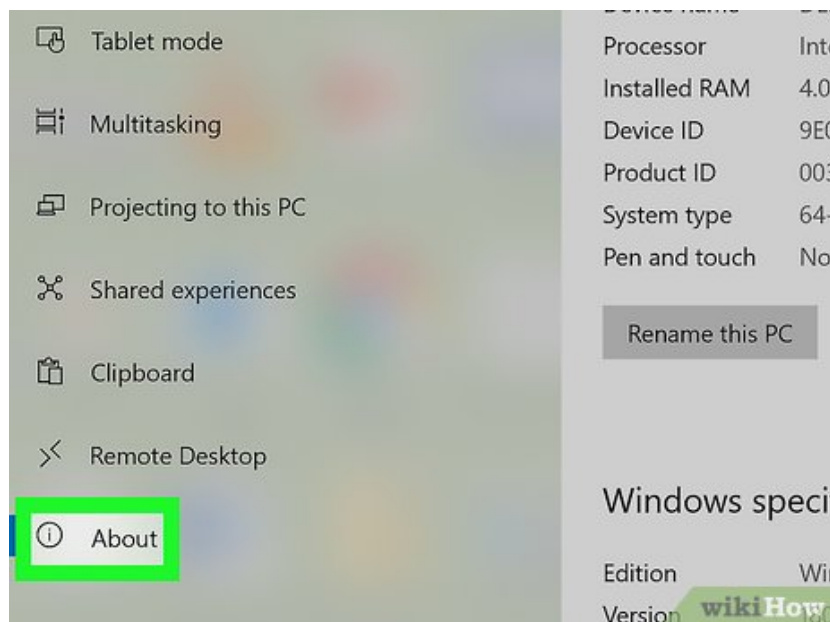
. It's in the sidebar to the left of the Windows Start menu. This displays the Settings menu.

3.

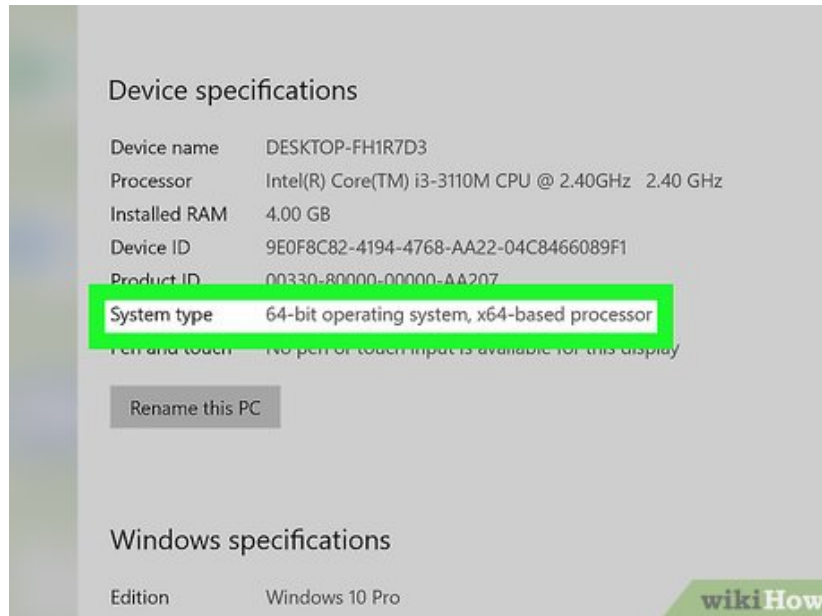


Click **System**. It's next to an icon that resembles a laptop computer. It's the first option in the Windows Settings menu.

4.



Click **About**. It's the last option in the sidebar to the left. This displays information about your system.



5.

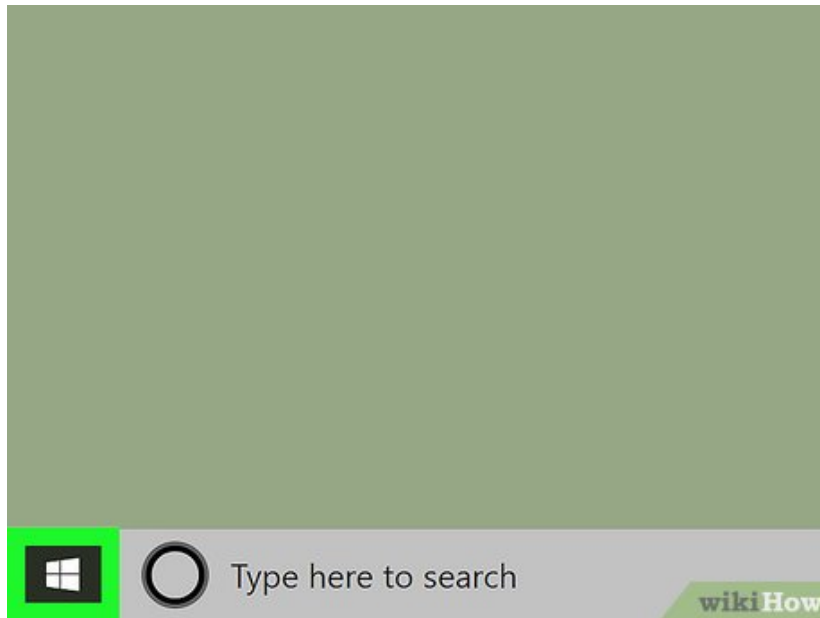
**Scroll down and check your device and Windows specifications.** This information is displayed on the "About" page in Windows Settings. As of August 2019, the latest version of Windows 10 is Version 1903.

1. Your system type (i.e. 32-bit/64-bit) is displayed next to **System Type** below "Device Specifications".
2. Your Windows Edition (i.e. Windows 10 Home) is displayed next to **Edition** below "Windows Specifications".
3. Your Windows version is displayed next to **Version** below "Windows Specifications".
4. Your Windows Build number is displayed next to **OS Build** on below "Windows Specifications".

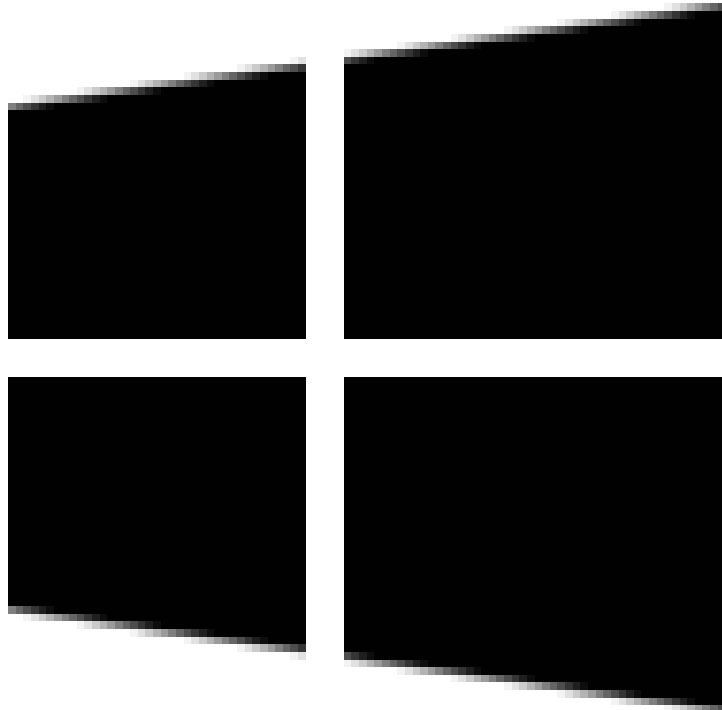
Part 3 of 3:

## **Determining if Windows is 32-Bits or 64-Bits**

1.

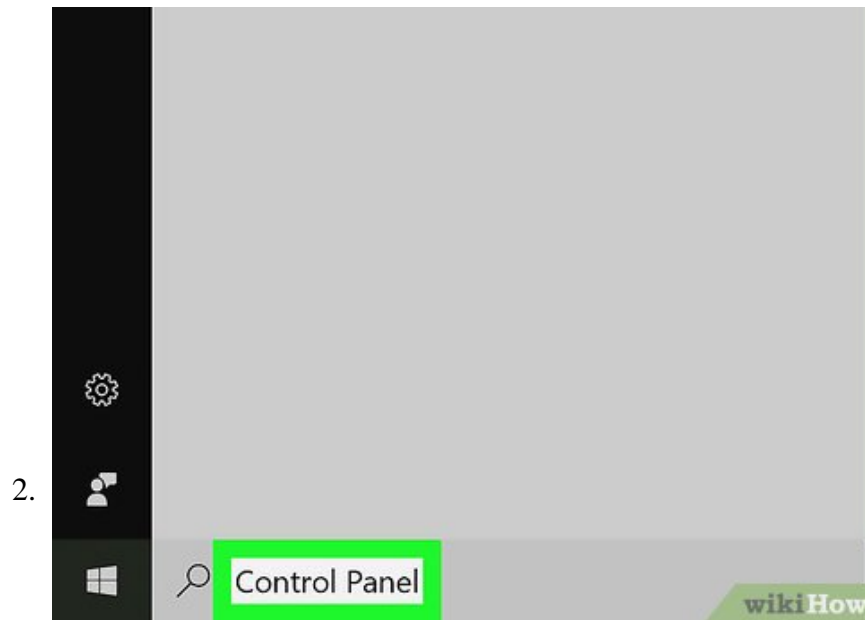


**Click the Windows Start menu**

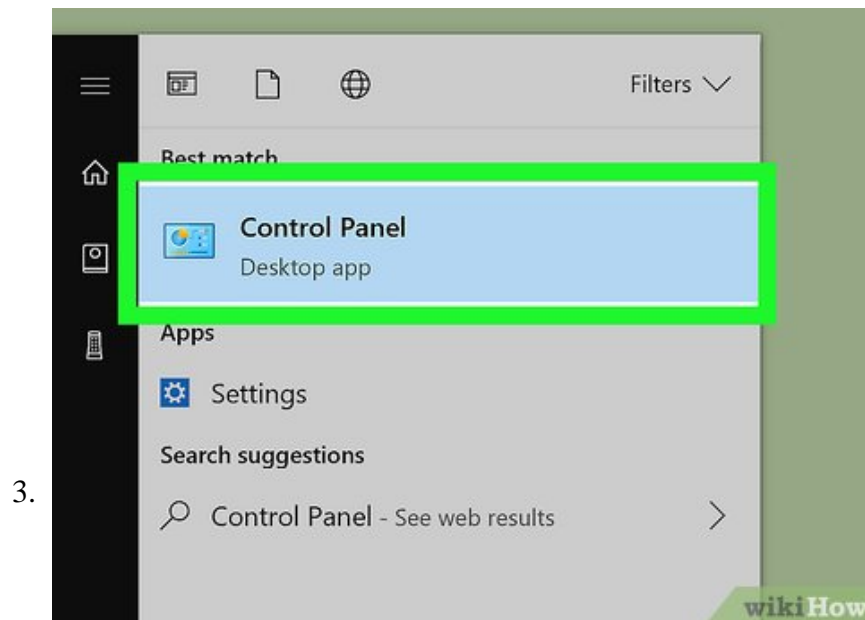


. It's the button with the Windows logo. By default, it's in the lower-left corner in the Windows taskbar. This displays the start menu.

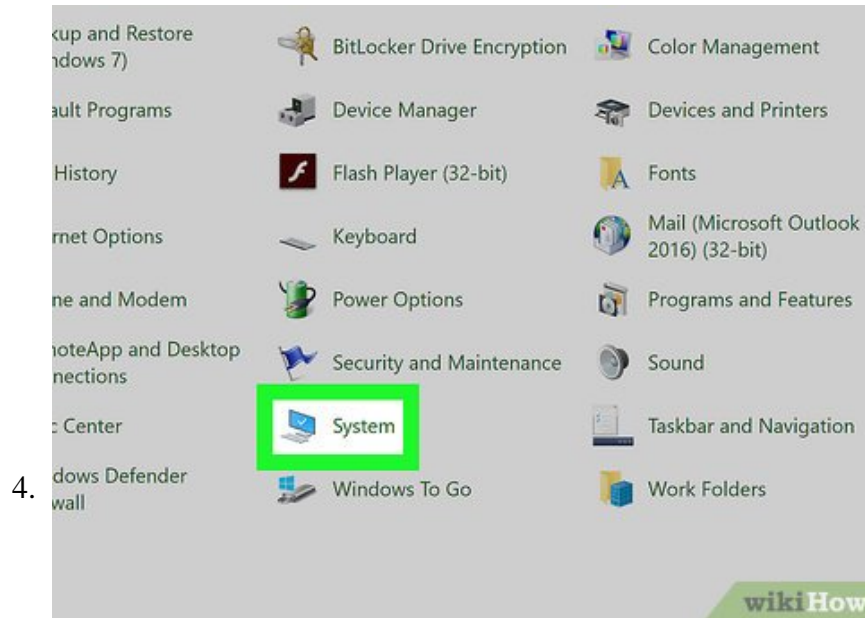
1. Alternatively, you can press the **Win + Pause** keys to display the System Information screen in the Control Panel.



Type **Control Panel** . This displays the Control Panel in the Start menu.



**Click the Control Panel icon.** It has an icon that resembles a blue screen with graphs. This opens the Control Panel.



4.

Click **System**. You will find your system information displayed in this Window.

1. Your Windows Edition (i.e. Windows 10 Home) is displayed below "Windows edition".
2. Your system type (i.e. 32-bit/64-bit) is displayed next to **System Type** below "System".

You finished reading the article "**How to Check Your Windows Version**" edited by the [TipsMake](#) team. We hope this article has provided you with many useful tech tips and tricks. You can search for similar articles on tips and guides. Thank you for reading and for following us regularly.