

How to check what type of chip your computer or laptop uses? Pentium, Core i3, i5, i7

Have you ever been interested in your computer's specifications and wanted to check what type and model of chip your computer or laptop is using? It won't take much time to check your computer or laptop's chip and find out what it is.

Understanding the computer you're using isn't as difficult as you might think. There are many ways to **check the type and quality of the chips, RAM , and HDD** in your computer or laptop . If you own a computer lab or are simply an IT professional managing equipment in your company, you need to know the basics of these specifications.



How to check the chip in a computer or laptop.

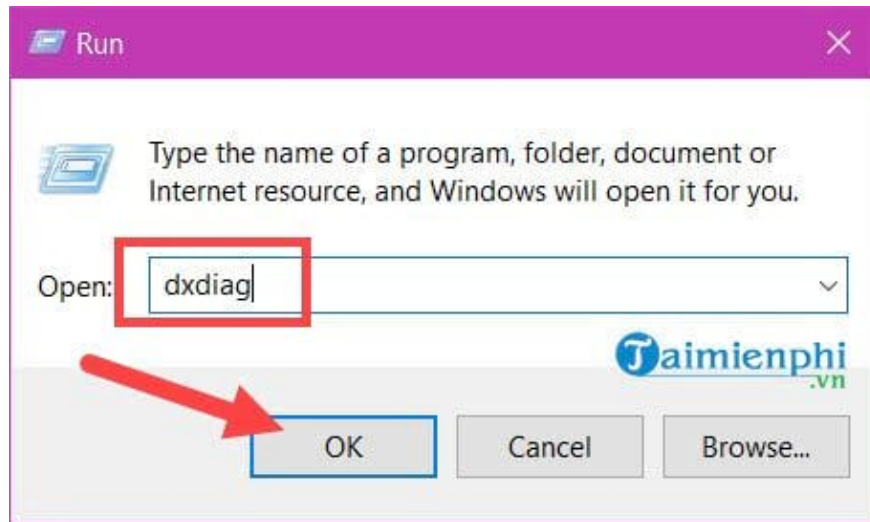
In the article below, TipsMake will guide you on the easiest way to check your computer or laptop's chip.

How to check what type of chip your computer or laptop uses.

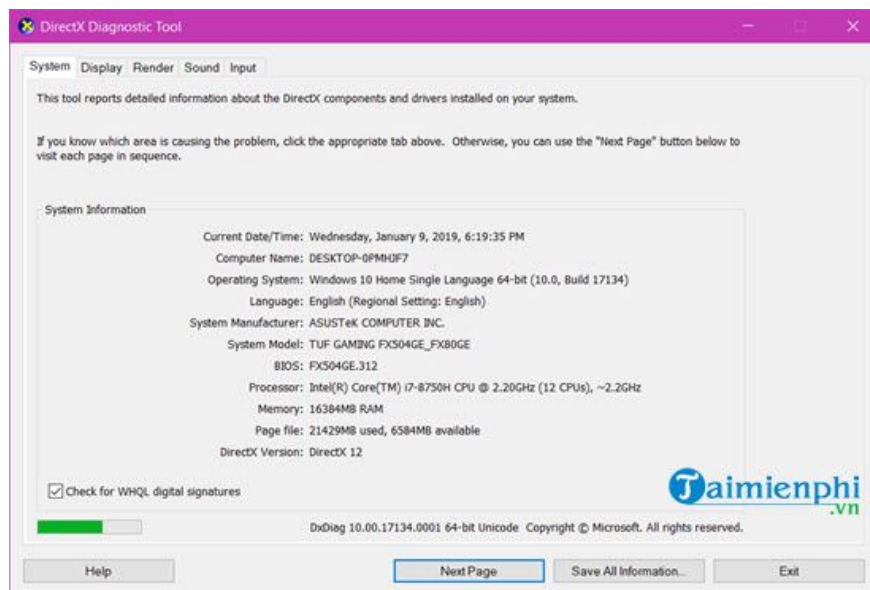
1. Check your computer or laptop chip without software.

You don't need to use built-in software on your operating system; there are many ways to check your computer or laptop's chip. One of these simple methods will be explained below.

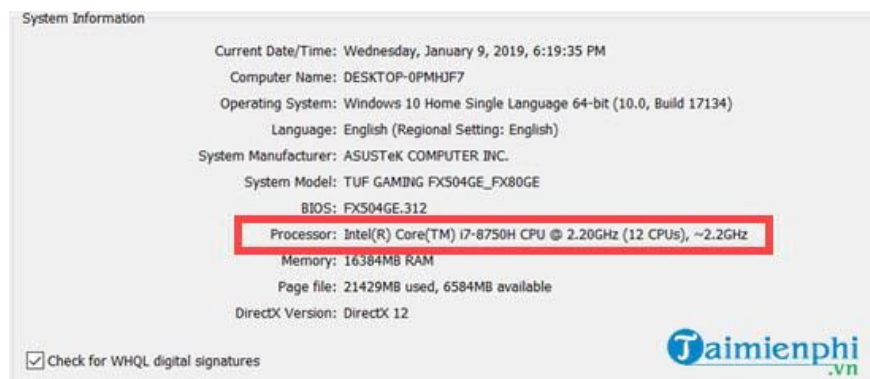
Step 1: Press the Windows + R key combination, then type dxdiag and press OK. This command will help you check your computer's chip, laptop, and many other parameters.



Step 2: Wait a moment and a command window will appear. Here you will find many parameters about your computer or laptop where you can search for information.



However, you only need to pay attention to the Processor line as shown below: Intel(R) Core(TM) i7-8750H CPU @2.20Ghz (12 CPUs), ~2.2Ghz.

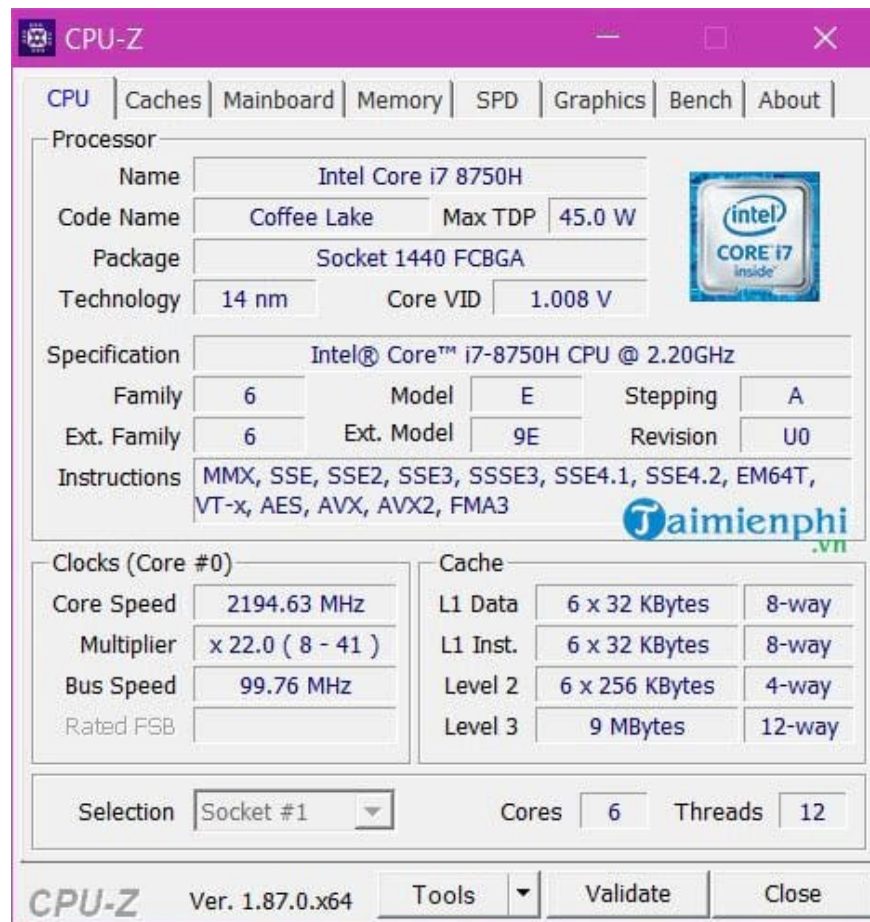


- The Core(TM) i7-8750H is a Core i7 (an extremely high-performance processor second only to the Core i9).
- The 8 at the beginning of the 8750H represents the 8th generation chip, also known as Coffee Lake. The H at the end represents the gaming laptop series, previously known as HQ.
- This processor has a minimum speed of 2.2 GHz and features 6 physical cores with 12 threads.

2. Check your computer/laptop chip with CPU-Z.

Another way to check your computer or laptop's chip is to use CPU-Z software. With CPU-Z, no specifications can escape its notice. Download CPU-Z to your computer here.

After the download is complete, proceed with the installation like any other software. When you open it, you will see an interface like the one below.



There are many parameters here, and they are all related to your specifications; the CPU section itself displays all the necessary information.

- **Name** : The name of the chip you are using and the manufacturer, as shown in the image, it's Intel Core i7 8750H.
- **Code Name** : The chip code indicates the current generation of the chip (for example, Coffeelake belongs to the latest generation of chips, 8750H with H and gaming performance).
- **Max TDP** : The maximum power consumption of the chip.
- **Package** : Indicates which socket and type the chip is using.
- **Technology** : The technology used, the manufacturing process (as shown in the image, it's 14nm).
- **Core Voltage** : The voltage supplied to the chip.

Clocks section - the running speed of each core

This is the processor clock speed, calculated as the number of calculations the processor can perform in one second. Therefore, the figure of 3.192 GHz tells us that the 8750H can perform 3.192 million calculations per second per core, because the 8750H is a 6-core processor with 6 independently operating cores.

Thus, with the two methods described in this article, users can easily check their computer or laptop's chip, determine the chip generation, and obtain related specifications. Furthermore, using either of these methods will provide detailed information about your computer's specifications. Readers can apply this to check the configuration of other computer components. In particular, CPU-Z can be used to check the computer's configuration with complete information that computer tools cannot display.

If you're unsure whether your laptop's graphics card is a dedicated or integrated (onboard) VGA card, please refer to our article **on checking if your VGA card** is dedicated or integrated here.

For those who are more interested in computer hard drives, including all types of internal HDDs or SSDs, CPU-Z alone is not enough. You need to use CrystalDiskInfo to get complete information, especially about the health of your hard drive. CrystalDiskInfo is easy to use and focuses on the parameters users want to know.

You finished reading the article "**How to check what type of chip your computer or laptop uses? Pentium, Core i3, i5, i7**" edited by the [TipsMake](#) team. We hope this article has provided you with many useful tech tips and tricks. You can search for similar articles on tips and guides. Thank you for reading and for following us regularly.