

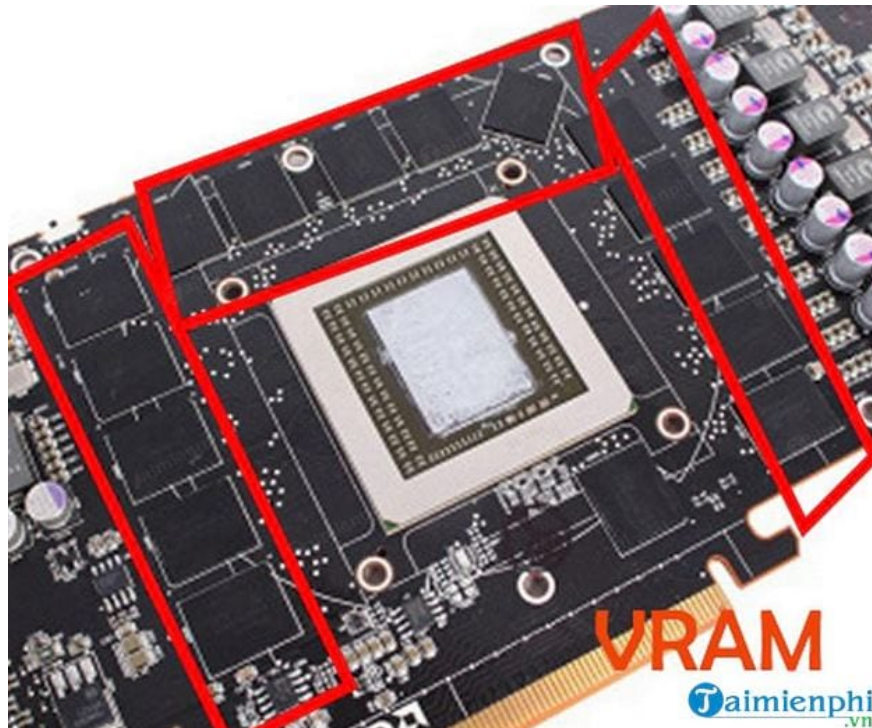
# How to check VRAM on Windows 10

You don't know what VRAM is? How to check VRAM on Windows 10? Please see details in TipsMake's article below to learn about the concept of VRAM as well as how to view VRAM capacity information on Windows 10 computers.

**VRAM** plays an important role in applications that display complex image textures or display polygonal 3D structures, commonly found in video game applications or 3D graphic design applications. For applications that rely on more complex data processing functions, the amount of VRAM on the graphics card will not be as important as the amount of RAM on the system. And to be more clear, users only need to **check VRAM on Windows** to know this difference.

## What is VRAM?

**VRAM** or Video RAM is a special type of RAM that works with a computer's graphics processor or GPU. GPU is the chip located on the graphics card (or video card) of the computer whose task is to display images on the computer screen.



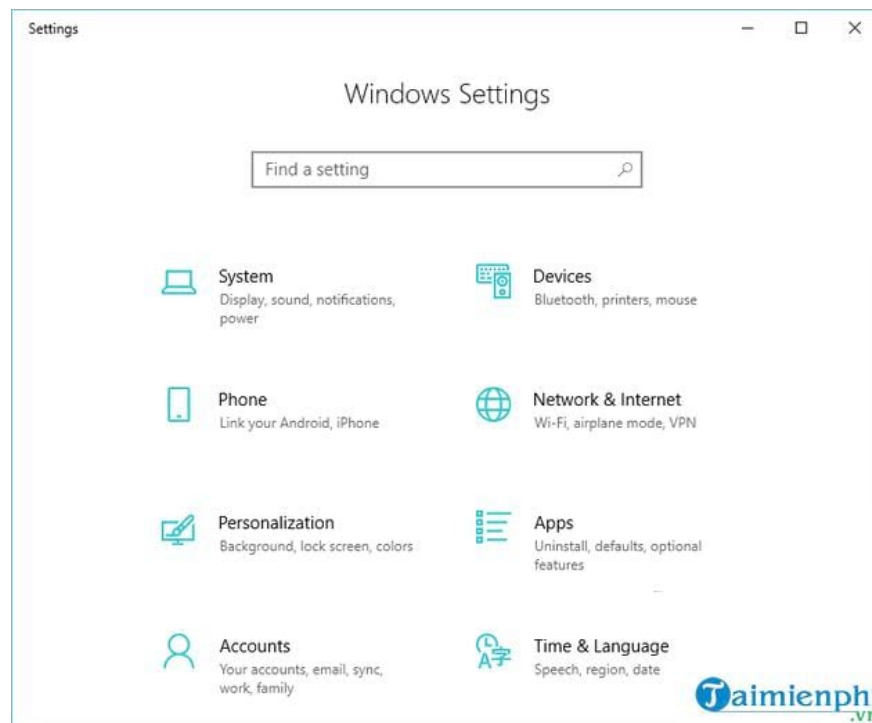
Nowadays, the terms GPU and graphics card are often used interchangeably. It can be called GPU but can also be called graphics card, see how to **check your computer's graphics card using GPU Z** here.

**VRAM** memory stores the information needed by the GPU. When using games, there are lighting effects, which will allow the GPU to quickly access the information, and the output video will reach the display screen. In specific cases, using VRAM will help a job or an application with a specific function run faster than when you use RAM, because VRAM is located next to the GPU in the graphics card, and it is designed with The purpose is to operate at high intensity.

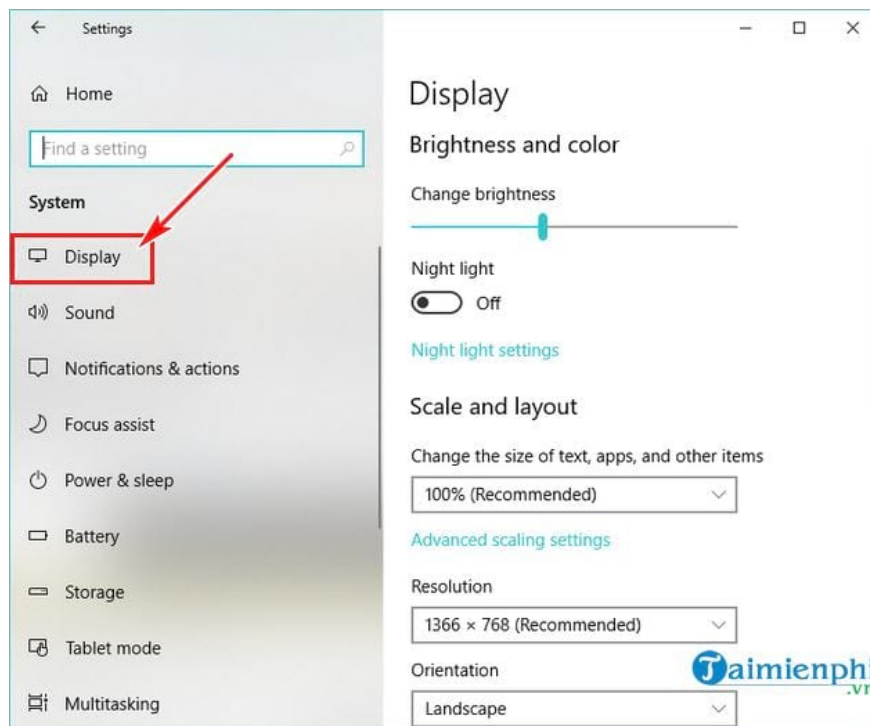
## How to check VRAM on Windows 10 computer

To check VRAM in Windows 10, follow these steps:

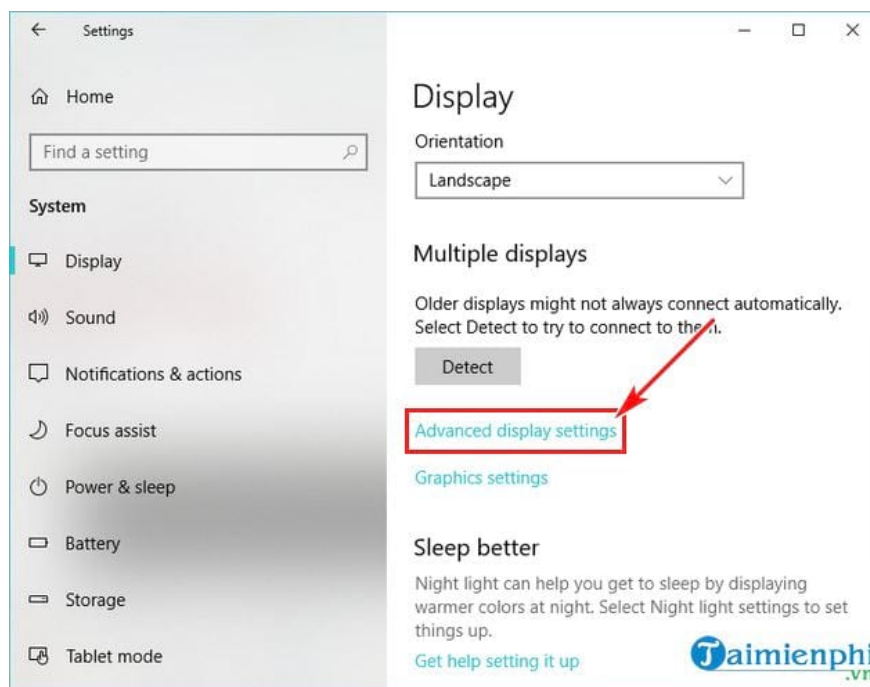
**Step 1:** Open **Settings** by pressing the keyboard shortcut: **Windows + I**. The **Windows Settings** interface appears as shown below:



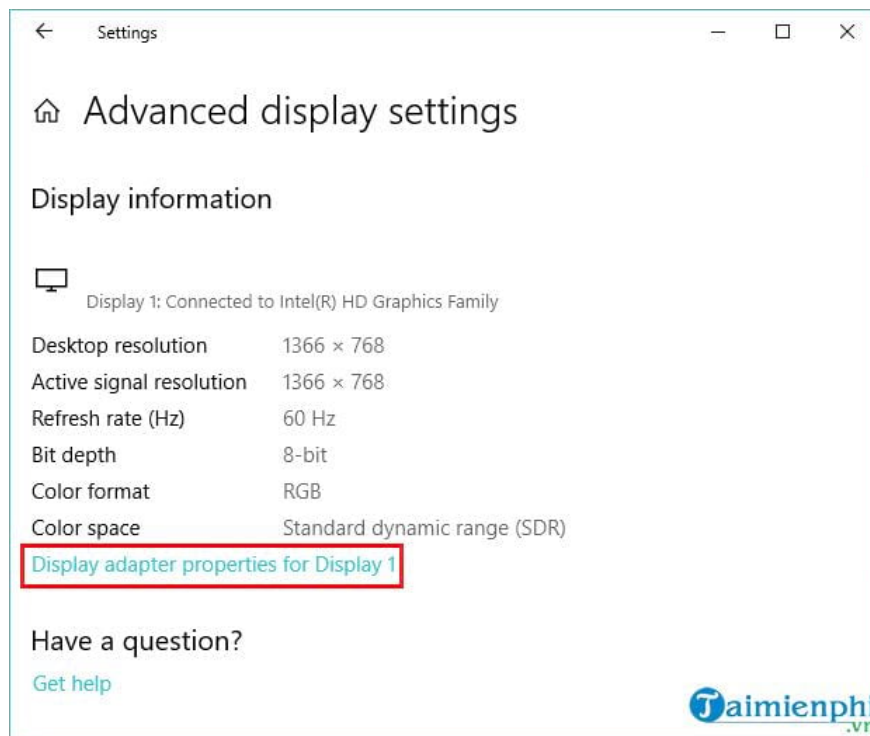
**Step 2:** Click on **System** -> then click on **Display** on the left bar.



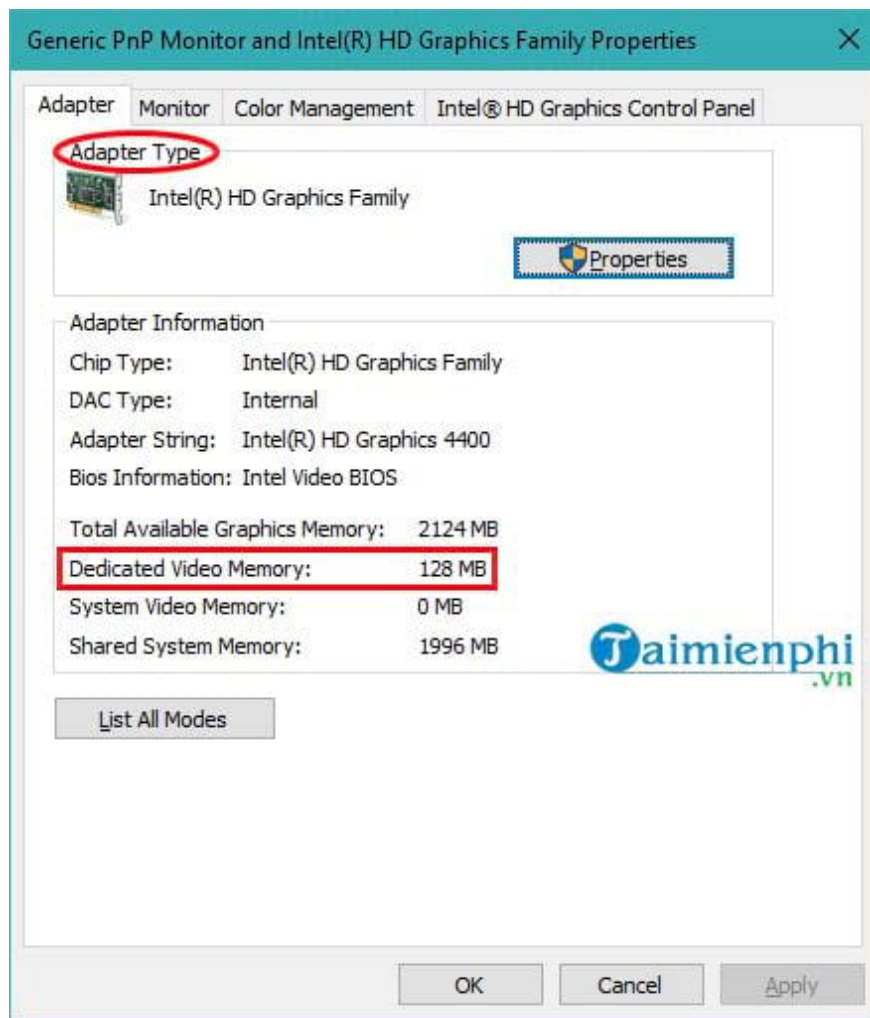
**Step 3:** Scroll down to find and then click on **Advanced display settings** .



Next, click on **Display adapter properties** as described in the image below.



**Step 4:** The control interface will appear -> select the **Adapter** tab and then look in the **Information Adapter** section to check the information.



In the image above, you will see the VRAM capacity right next to **Dedicated Video Memory** . As for the **Adapter Type** section , you will see the name can be NVIDIA or AMD graphics card, this will depend on the type of device you are using.

If you see the information on **Adapter Type** as AMD Accelerated Processing Unit or Intel HD Graphics (like the image above), then the system you are using has integrated graphics.

So you know what VRAM is and how to **check VRAM on Windows 10** ! Similar to checking RAM on a computer, basically the way to view VRAM information on a computer is quite simple, and you can also use additional specialized software to check the computer configuration. , you will see hardware information and of course VRAM information that you are interested in, see the top **software to check computer configuration** here and choose a suitable application to use such as CPU Z. term. Good luck!

You finished reading the article "**How to check VRAM on Windows 10**" edited by the [TipsMake](#) team. We hope this article has provided you with many useful tech tips and tricks. You can search for similar articles on tips and guides. Thank you for reading and for following us regularly.