

How to check TPM version before upgrading to Windows 11

If you want to upgrade to Windows 11, you must discover whether your computer has a TPM and which version of TPM you have access to.

With the launch of Windows 11, users flocked to download Microsoft's PC Health Check app to see if their system could be upgraded to the new operating system. Unfortunately, many people have received the result: This PC cannot run Windows 11.

Turns out you have to install and activate TPM to upgrade. So what is TPM? And how do you get the latest Microsoft operating system?

How to check if the computer has TPM?

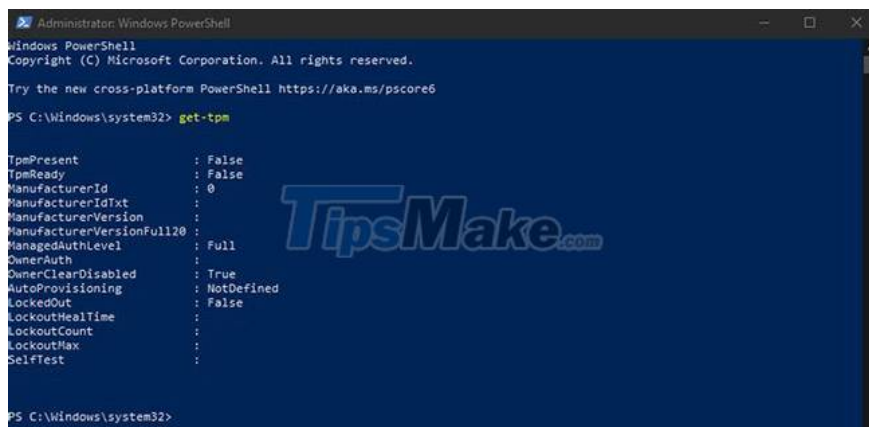
The easiest way to check if you have a TPM chip is to run the `get-tpm` command through Windows PowerShell. Specifically:

Step 1: Open Windows PowerShell with admin rights, by right-clicking the Start button > select Windows PowerShell (Admin) > Yes to confirm.

Step 2: Type the command `get-tpm` and press Enter.

Step 3: You find the line `TpmPresent` to see the results:

1. `TpmPresent: True` => motherboard with TPM . chip
1. `TpmPresent: False` => your motherboard does not have a TPM chip.



```
Administrator: Windows PowerShell
Windows PowerShell
Copyright (C) Microsoft Corporation. All rights reserved.

Try the new cross-platform PowerShell https://aka.ms/pscore6

PS C:\Windows\system32> get-tpm

TpmPresent           : False
TpmReady             : False
ManufacturerId       : 0
ManufacturerIdTxt    : 
ManufacturerVersion  : 
ManufacturerVersionFull120 : 
ManagedAuthLevel    : Full
OwnerAuth            : 
OwnerClearDisabled   : True
AutoProvisioning     : NotDefined
LockedOut            : False
LockoutHealTime      : 
LockoutCount         : 
LockoutMax           : 
SelfTest             :
```

Besides, there are some other ways, readers can refer to the article: [How to check if Windows PC has a Trusted Platform Module \(TPM\) chip](#) for more details.

Then you can enable the TPM chip in your BIOS/UEFI and check if you are eligible for the Windows 11 upgrade.

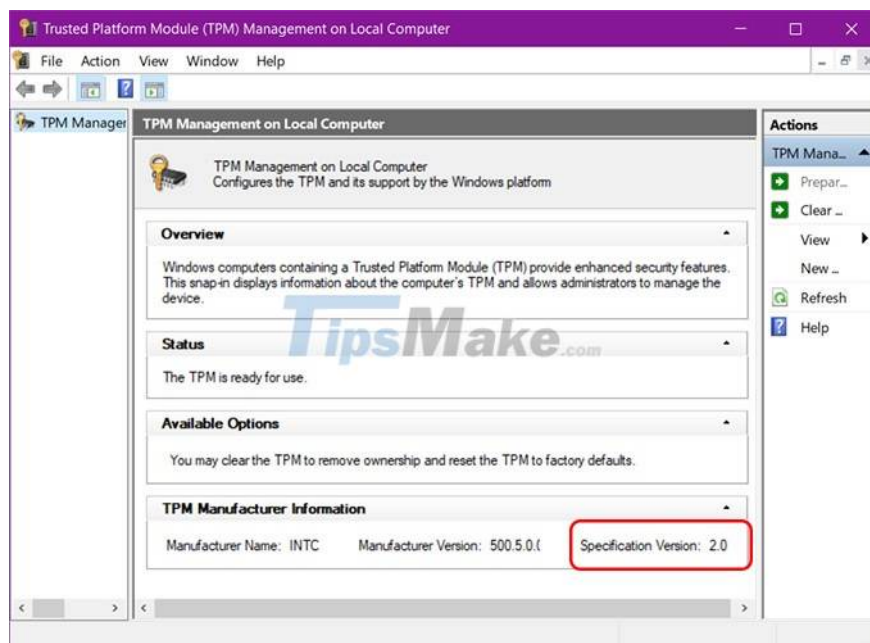
How to check TPM . version

Microsoft initially announced that users needed TPM 2.0 to run Windows 11. However, it later revised its documentation, setting the minimum requirement down to TPM 1.2, but TPM 2.0 is the recommended version.

Now, if you try to upgrade to Windows 11 with a TPM 1.2 chip, you'll see a message saying "upgrade not recommended". Naturally, without the TPM 1.2 chip, you won't be able to upgrade - the Windows 11 upgrade won't be offered for your device.

To check the TPM version on your device, do the following:

1. Step 1. Press Windows key + R, then type, tpm.msc => Enter
2. Step 2. The Trusted Platform Module (TPM) Management window will open.
3. Step 3. Look at the bottom of the window to find the Specification Version, the number shown here is the TPM version that the PC has.

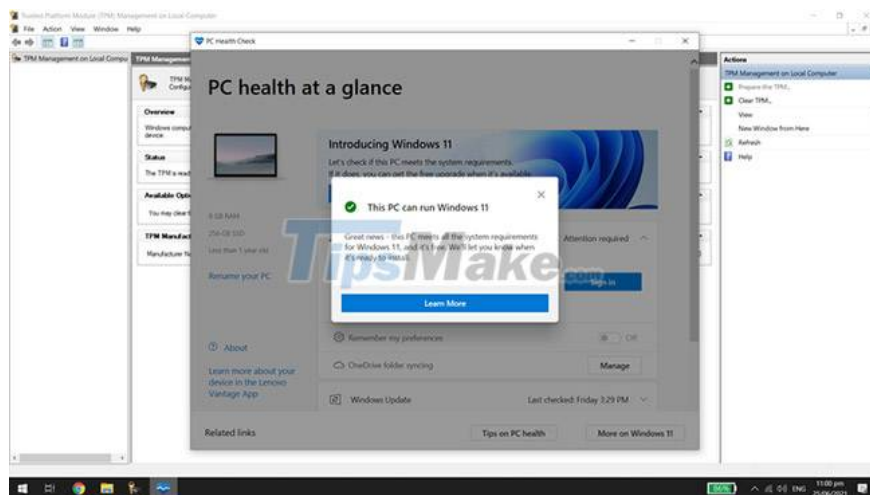


How to upgrade TPM 1.2 to TPM 2.0

If you find that you have a TPM 1.2 chip, you can upgrade to TPM 2.0, it all depends on your hardware, manufacturer and firmware. That is why the article will not be able to provide exact details on how to upgrade TPM 1.2 to TPM 2.0.

If you complete an Internet search for your hardware type and the phrase "upgrade tpm 1.2 to tpm 2.0" you may find some helpful search results, guiding you through the process.

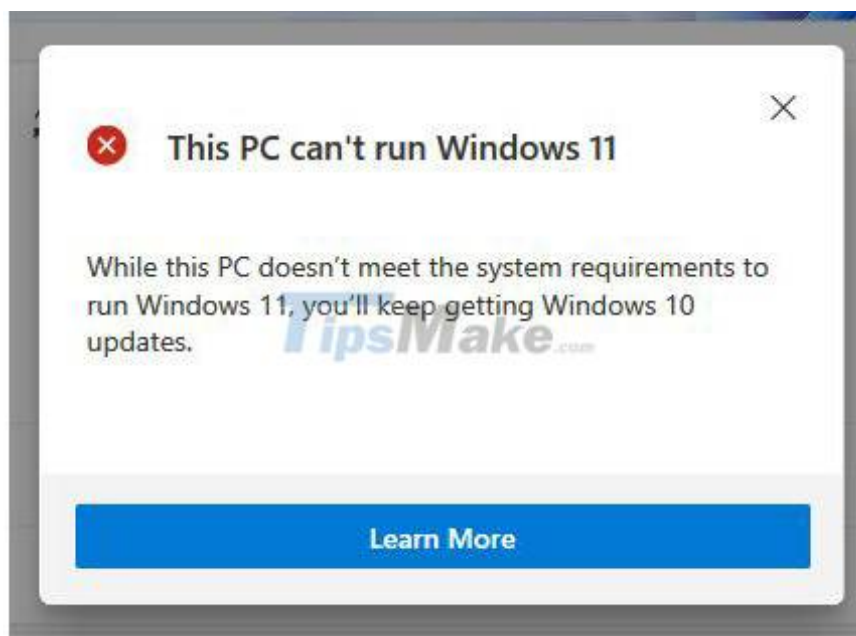
Can you enable TPM to upgrade Windows 11?



If your computer has a built-in TPM 1.2 chip or higher, just make sure it's activated to run Windows 11. Activation varies between motherboard types and models. You must check your computer's documentation for exact instructions.

TPM availability varies between motherboards, but most new devices already have them installed. Indeed, Microsoft has required TPM 2.0 chips for all new hardware since 2016. However, if you have an old PC and don't have a TPM chip, the only solution you have is to upgrade your device. .

What is TPM?



TPM, or Trusted Platform Module, is a hardware-based security solution. It's a chip installed directly on the motherboard to protect the system against malware and other attacks. It is also an integral part of Windows security tools, such as the Bitlocker drive encryption feature.

Windows 11 recommends a TPM 2.0 chip in the system for upgrade, although TPM 1.2 will meet the minimum criteria. Microsoft requires this technology to improve customer security - although many experts consider these specifications to be overkill.

So if you want to upgrade to Windows 11, you have to check if your computer has TPM and which version of TPM you have access to.

You finished reading the article "**How to check TPM version before upgrading to Windows 11**" edited by the [TipsMake](#) team. We hope this article has provided you with many useful tech tips and tricks. You can search for similar articles on tips and guides. Thank you for reading and for following us regularly.