

How to check the WDDM version in Windows

Windows Display Driver Model (WDDM) is a graphics driver architecture for video card drivers running Microsoft Windows versions, starting with Windows Vista.

Windows Display Driver Model (WDDM) is a graphics driver architecture for video card drivers running Microsoft Windows versions, starting with Windows Vista.

WDDM is a replacement for the display driver model on previous Windows 2000 and Windows XP (XDDM / XPDM), which is aimed at providing performance, as well as new and stable graphics functionality. Display drivers in Windows Vista and Windows 7 can choose to comply with WDDM or XDDM. However, with the removal of XDDM from Windows 8, WDDM became the only option.

WDDM provides the functionality needed to dump desktop and applications using Desktop Window Manager, a synthetic window manager that runs on Direct3D. It also supports new DXGI interfaces, essential for basic device management and creation.

WDDM requires at least a Direct3D 9 capable video card and display driver to implement device driver interfaces for the Direct3D 9Ex runtime to run legacy Direct3D applications. WDDM can optionally deploy runtime interfaces for Direct3D 10 and above.

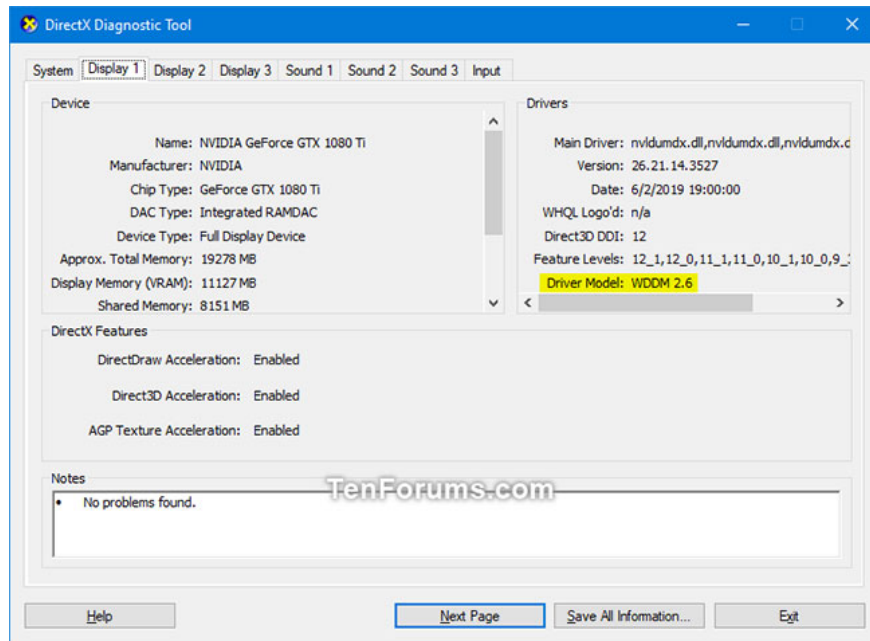
WDDM versions for quick reference

Operating system: WDDM version supported
Windows Vista WDDM 1.0
Windows 7 WDDM 1.1
Windows 8 WDDM 1.2
Windows 8.1 WDDM 1.3
Windows 10 build 10240 WDDM 2.0
Windows 10 version 1607 WDDM 2.1
Windows 10 version 1703 WDDM 2.2
Windows 10 version 1709 WDDM 2.3
Windows 10 version 1803 WDDM 2.4
Windows 10 version 1809 WDDM 2.5
Windows 10 version 1903 WDDM 2.6
Windows 10 version 2004 WDDM 2.7

How to check the WDDM version in Windows

This guide will show you how to check which version of Windows Display Driver Model you have for WDDM support in Vista, Windows 7, Windows 8 and Windows 10.

1. Press the Win+ keys R to open **Run** , type **dxdiag** in **Run**, and click **OK** to open the **DirectX Diagnostic Tool** .
2. In the **DirectX Diagnostic Tool** , click the **Display** tab you want to check.
3. In the **Drivers** section , the WDDM version (eg "WDDM 2.6") will be to the right of the **Model Driver** .



The WDDM version will be to the right of the Driver Model

You finished reading the article "**How to check the WDDM version in Windows**" edited by the [TipsMake](#) team. We hope this article has provided you with many useful tech tips and tricks. You can search for similar articles on tips and guides. Thank you for reading and for following us regularly.