

# How to check the version of Excel in use

The operation of checking the version of Excel in use on the computer helps users choose to upgrade or use the current version.

Microsoft Office versions have different version numbers including 2003, 2007, 2010, etc. that correspond to the Office suite included as Excel 2007, Excel 2016, etc. However, in addition to recognizing Excel version through the set Corresponding Office, users can also check more thoroughly within the interface of Excel. Then the version of Excel will be more detailed. If users know clearly about the version of Excel in use, they will plan to upgrade Excel version to experience, or use the same version.

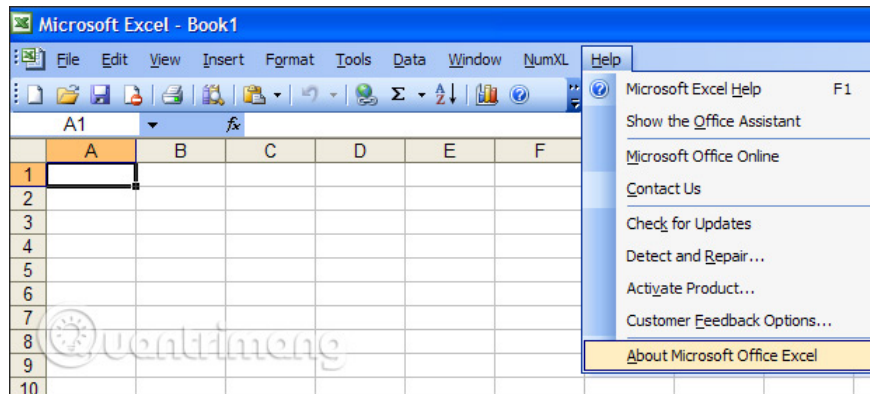
Testing the Excel version is the same as when we check the Windows version on the system. The Office 2003, 2007, 2010, 2013, and 2016 versions have Excel version numbers 11, 12, 14, 15, and 16. The following article will show you how to check the version used in Excel.

1. How to check the Windows 10 version on the computer
2. 4 simple ways to check the configuration and hardware information of computers and laptops
3. How to check the unified Windows application version (UWP) in Windows 10
4. How to update Google Chrome to the latest version?

## 1. Check the Excel version on Office 2003

### Step 1:

In Excel 2003 interface, we click on **Help** and then click **AboutMicrosoft Office Excel** as shown below.



### Step 2:

We will then see the interface fully displaying the current Excel information, including the version name and current version number. With this image, the name of the version of Excel 2003 belongs to the Office Standard Edition. There are also several versions such as Professional Edition or Home Edition, Enterprise.

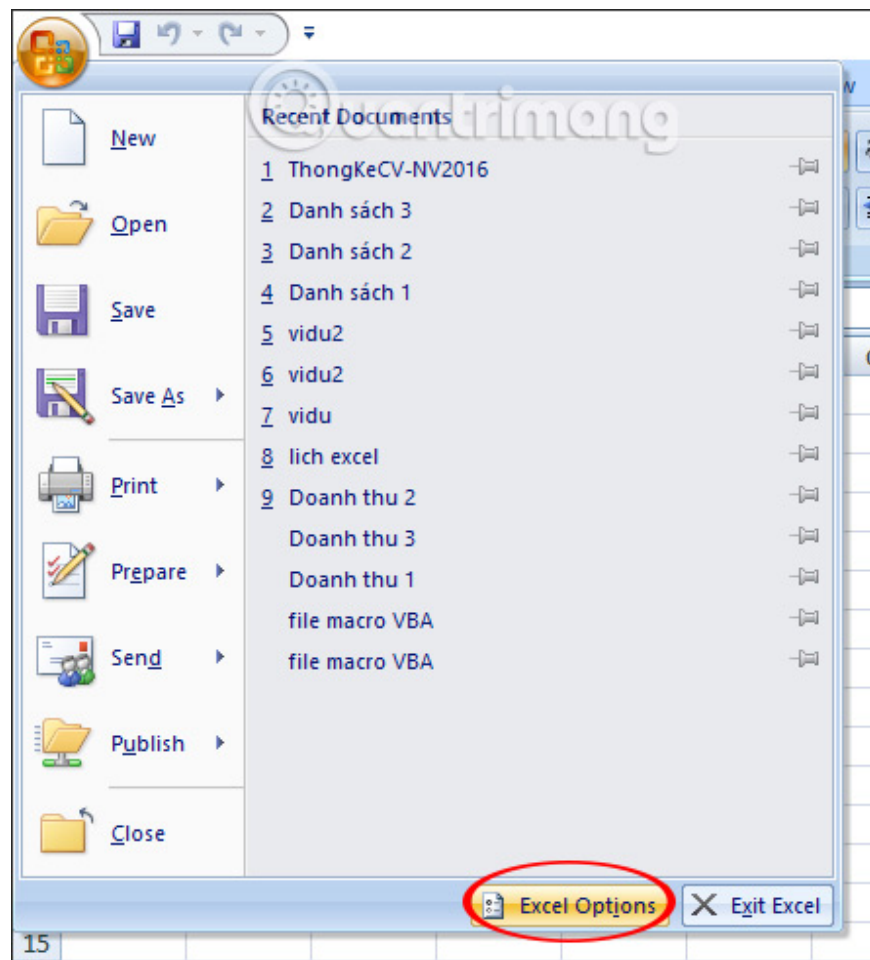
Also in this interface will show the version number is 11, the representative for Office 2003.



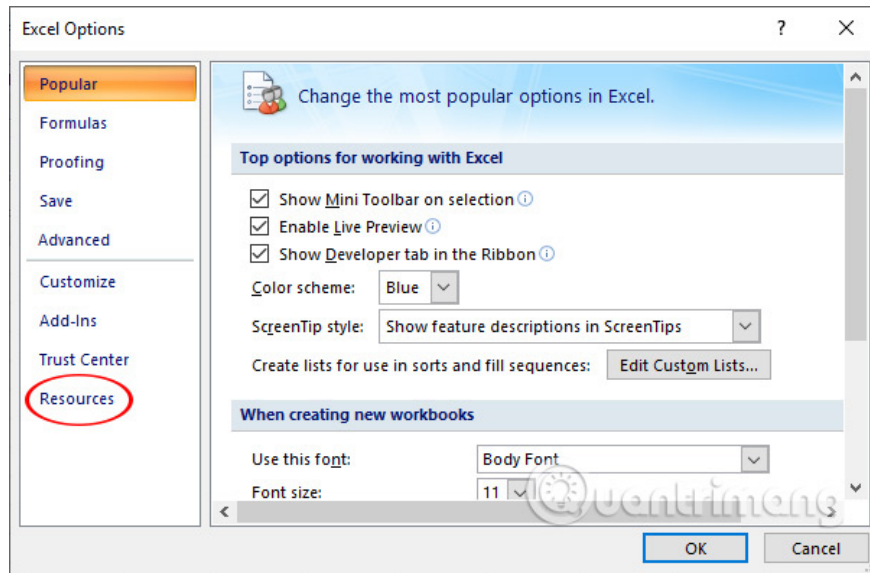
## 2. Check the Excel version on Office 2007

### Step 1:

In Excel interface, we click on **the Office icon** and select **Excel Options**.

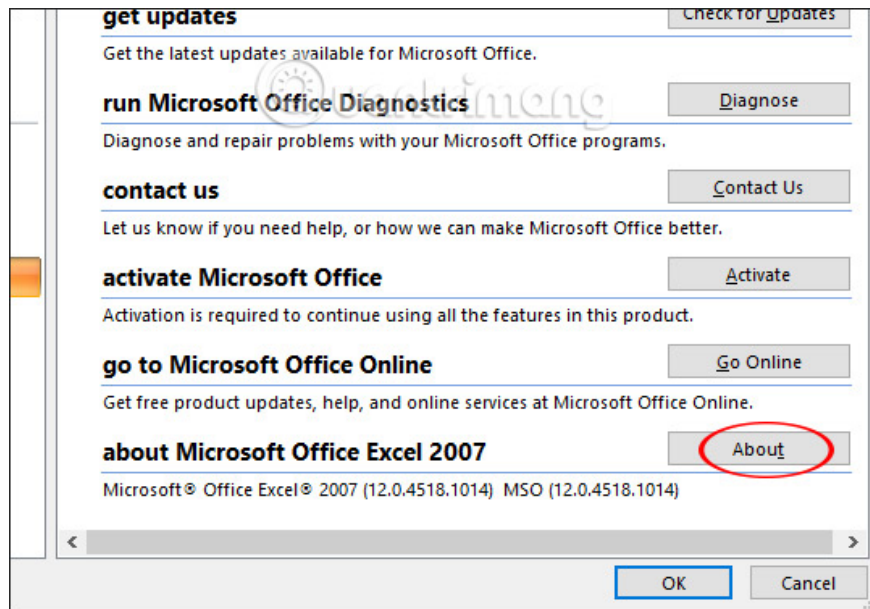


Switch to the new user interface and click **Resources** to check the version for Excel.

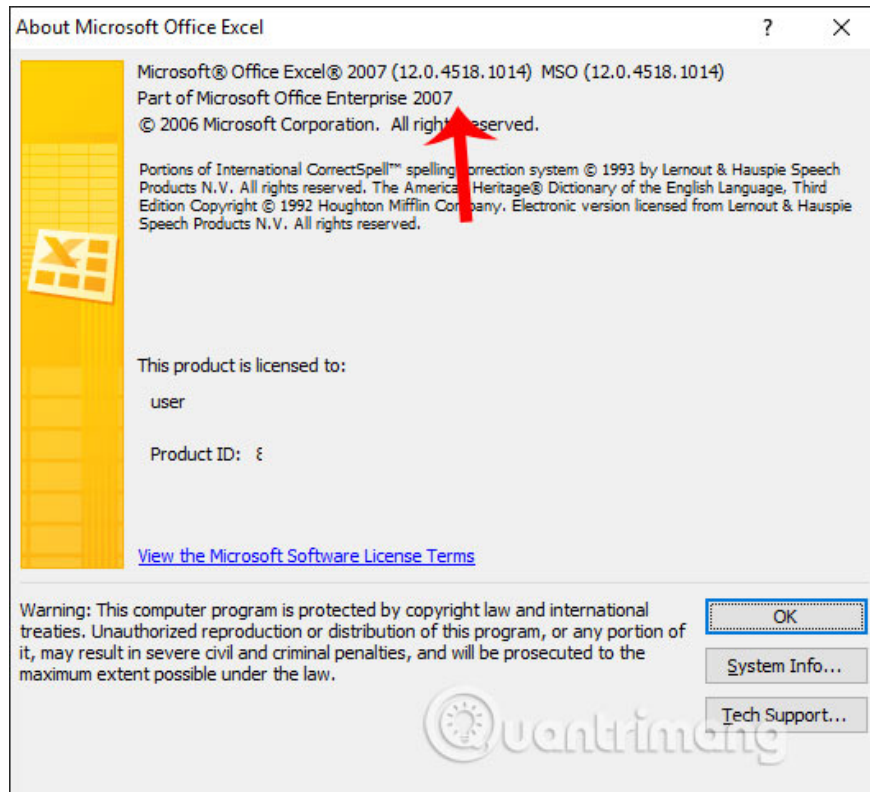


## Step 2:

Switch to the new interface and click on **the About button** in the section **about Microsoft Office Excel 2007** to see more information.



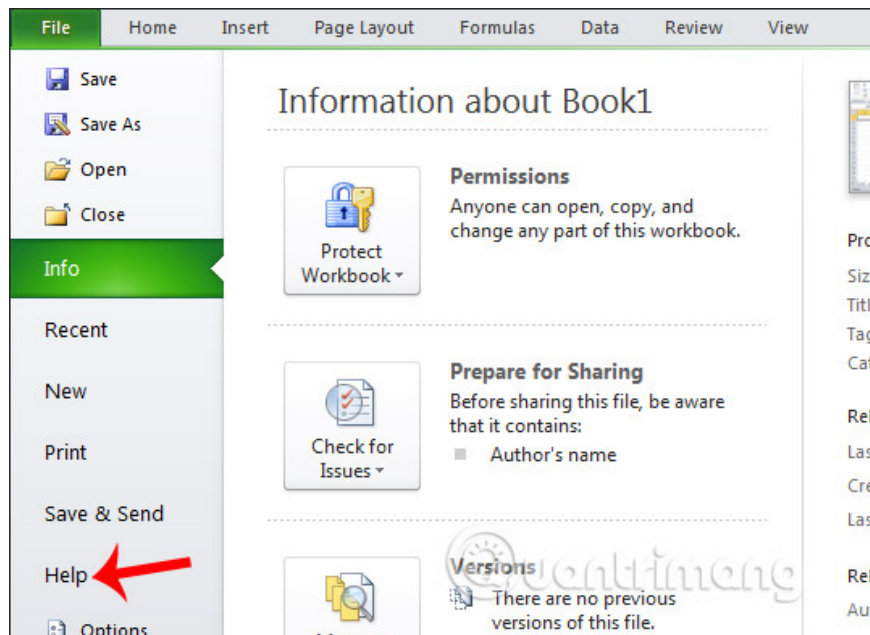
As a result, users also see the current version number 12 which is the Excel version of Office 2007 suite. Besides, you can check the details of the product name via the Part of Microsoft Office Enterprise 2007.



### 3. Check Excel 2010, 2013 version

#### Step 1:

At the Excel interface, click on **File** and then select **Help** .



#### Step 2:

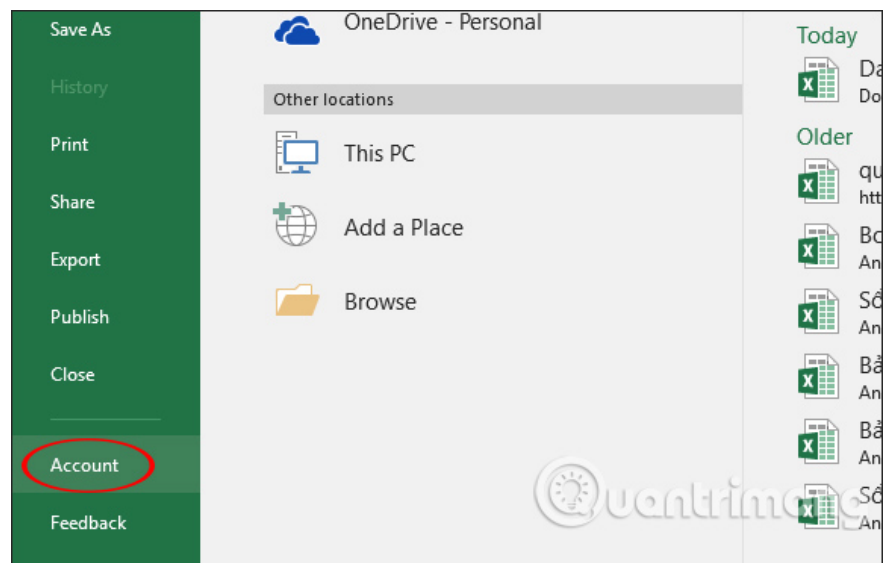
Displays information about the Excel version in use as in the text box. You also know the detailed version of Excel as well as the name of the Office suite.



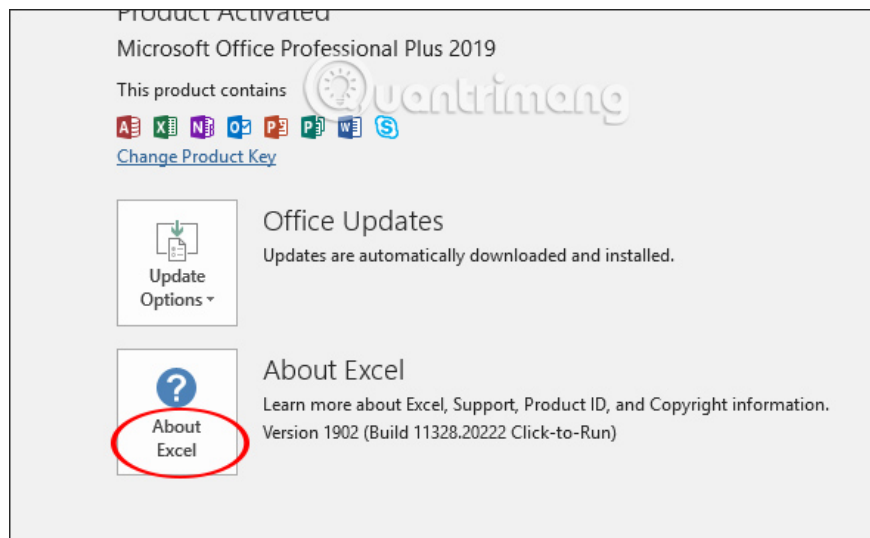
## 4. Check out Excel 2016 version and above

### Step 1:

We click on **File** then select **Account** to access the Excel version test page.

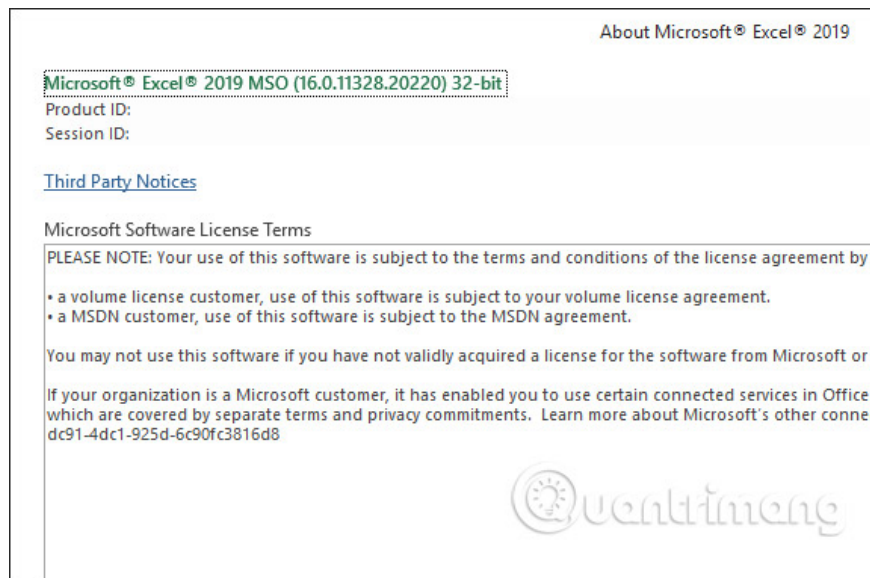


Click on the **About Excel** button to see the Excel version interface.



## Step 2:

As a result, you know exactly what the current version of Excel is.



So, checking the detailed Excel version is also very simple. In each different version of Office, some tests will be different.

Hope this article is useful to you!

You finished reading the article "**How to check the version of Excel in use**" edited by the [TipsMake](#) team. We hope this article has provided you with many useful tech tips and tricks. You can search for similar articles on tips and guides. Thank you for reading and for following us regularly.