

# How to check the type of graphics card (GPU) on the computer

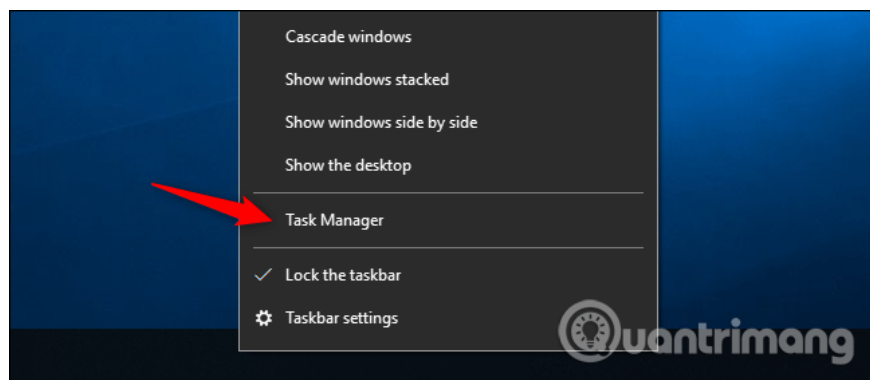
Most modern computers have graphics processors (GPUs) manufactured by Intel, NVIDIA or AMD. This article will show you how to check the graphics card type on Windows 10.

All computers have graphics hardware that handles everything from video decoding to rendering of PC games. Most modern computers have graphics processors (GPUs) manufactured by Intel, NVIDIA or AMD.

Although computer CPU and RAM are also important, GPU is the most important component when playing games on PC. Without GPUs powerful enough, you can't play new PC games or play them with lower graphics settings. Some computers have integrated and dedicated low-power graphics, while some other computers have graphics cards (sometimes called video cards) that leave strong. Here's how to review graphics hardware on Windows computers.

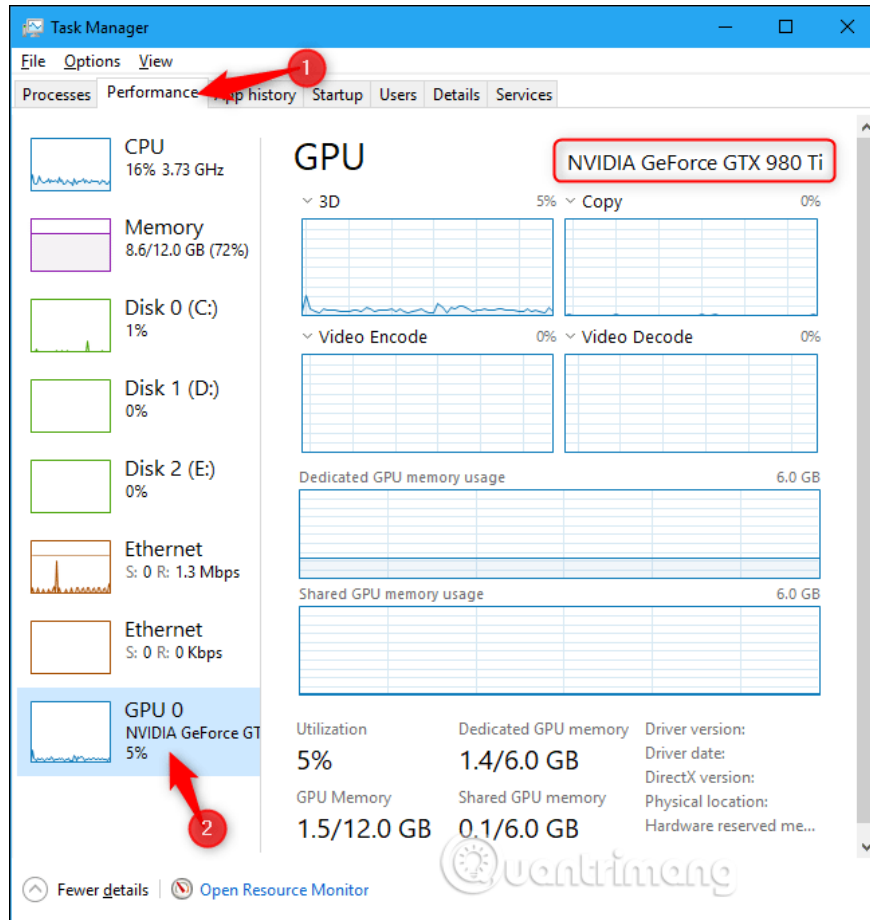
1. 4 simple ways to check the configuration and hardware information of computers and laptops
2. Use GPU-Z to analyze graphics card parameters
3. Combination of restart key GPU driver on Windows

On Windows 10, you can check GPU information right in Task Manager by right-clicking on the taskbar, selecting **Task Manager** or pressing **Windows + Esc** to open it.

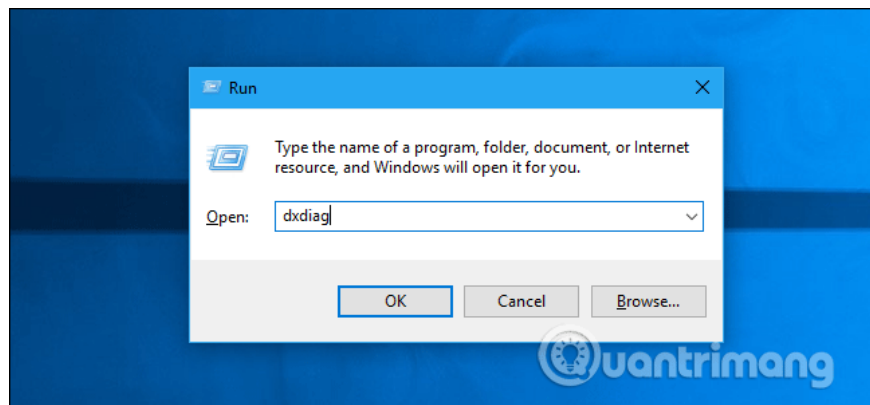


Click the **Performance** tab at the top of the window (if you don't see this tab, click **More Info** ), select **GPU 0** in the sidebar. You will see the GPU manufacturer's name and the model name displayed in the top right corner of the window.

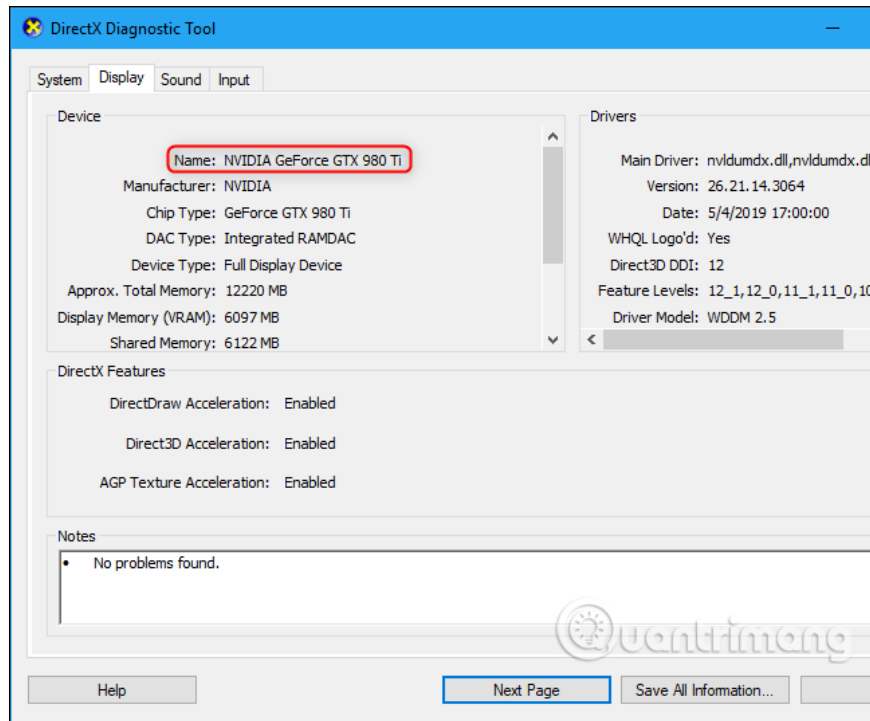
You also see other information such as GPU memory capacity, GPU usage per application. If your system has multiple GPUs, you will see GPUs numbered 1, 2, etc. Each of these numbers represents a different physical GPU.



On older Windows versions, such as Windows 7, you can find this information in the DirectX Diagnostic Tool. To open it, press **Windows + R**, type **dxdiag** in the **Run** dialog box that appears and press **Enter**.



Click on the **Display** tab and look in the **Name** field in the **Device** section. You also see other information here such as video memory capacity (VRAM) integrated in the GPU.



If there are multiple GPUs in the system, for example on a laptop with a low-power Intel GPU used for batteries and a high-power NVIDIA GPU used for gaming, you can control which GPU application to use in Windows **Settings** . 10. These controls are integrated in NVIDIA Control Panel.

I wish you all success!

You finished reading the article "**How to check the type of graphics card (GPU) on the computer**" edited by the [TipsMake](#) team. We hope this article has provided you with many useful tech tips and tricks. You can search for similar articles on tips and guides. Thank you for reading and for following us regularly.