

How to view the elevation of a location on Google Maps

Checking the elevation of a location on Google Maps will help you find places with higher elevations, especially in hilly or mountainous areas, and mountain passes that you are about to travel through.

Viewing the elevation of a location on Google Maps will help you find places with higher elevations, especially in hilly or mountainous areas, and mountain passes you're about to travel through. The elevation feature on Google Maps is available on all versions, for both phones and computers. This makes it easy to view the terrain and elevation information for any area you need on Google Maps. Below is a guide on how to view the elevation of a location on Google Maps.

Instructions on how to view location elevation on Google Maps

Quick guide

Find a location on the map > Click the layer icon > Select the terrain icon > View the elevation on the map

Detailed instructions

1. How to view the elevation of a location on Google Maps on your phone.

Step 1:

On the Google Maps interface, enter the location on the map where you want to view the elevation. Click on that location in the list of results below.

Please note that the elevation viewing feature on Google Maps is currently only available for a few well-known landmarks.

📍 🔊 👤

🍴 Nhà hàng

☕ Quán cà phê

🛏 Khách sạn



TRẠM L

Quán cà viên 📍

Cafe Tuyệt Nh

CHÂU KHÊ

QL19

hương
g | Google

Tin mới nhất trong vùng

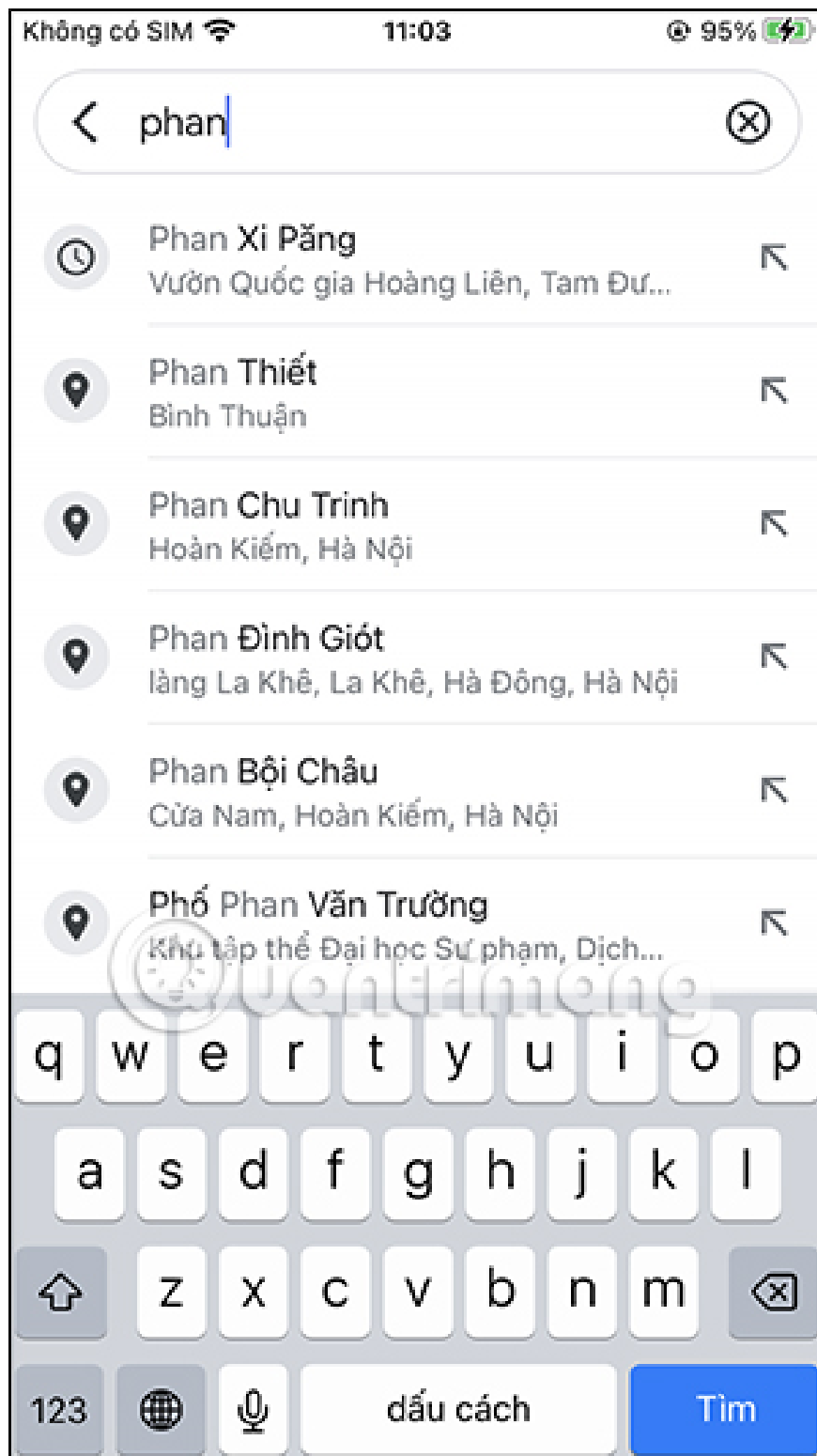
📍 Khám phá

🚗 Di chuyển

📖 Đã lưu

⊕ Đóng góp

🔔 Cập nhật



Step 2:

Next, tap on the map interface and then tap **the layer icon** on the right side of the interface.

Phan Xi Păng



Nhà hàng Hải
cảng Fansipan



Phan Xi Păng

Núi có đường mòn và
cáp treo

Đã xem gần đây



Phan Xi Păng

4,7 ★★★★★ (1.926)

Tam Đường, Lai Châu



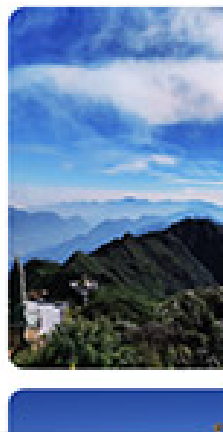
Đường đi



Lưu



Nhãn





Step 3:

Below, you'll see an interface with several customization options. Click on **the Terrain icon** to view the Google Maps interface in terrain mode.

Phan Xi Păng



Loại bản đồ



Mặc định



Địa hình



Chi tiết bản đồ



Phương tiện công cộng



Giao thông



Đi xe đạp

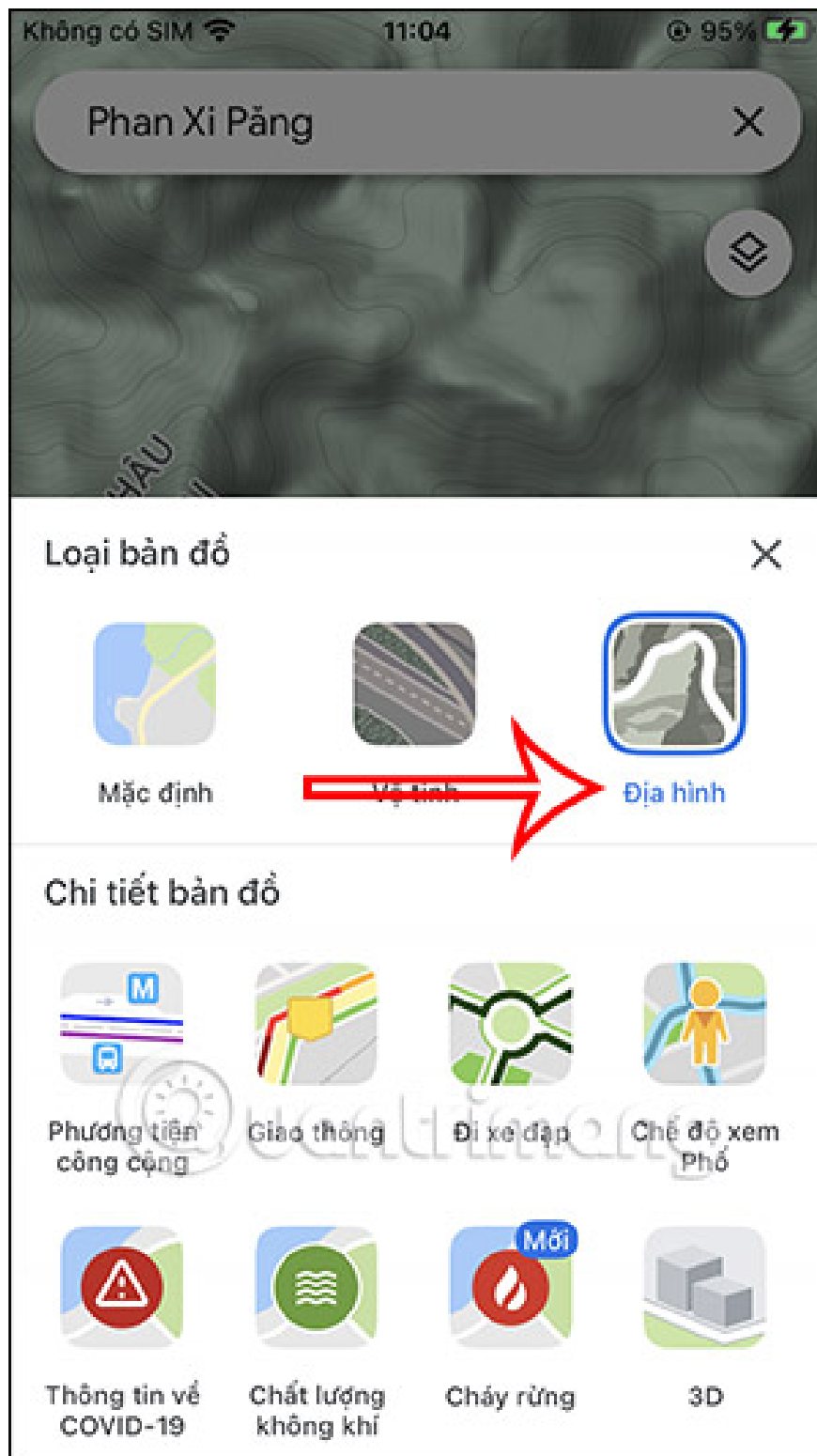


Chế độ xem Phố



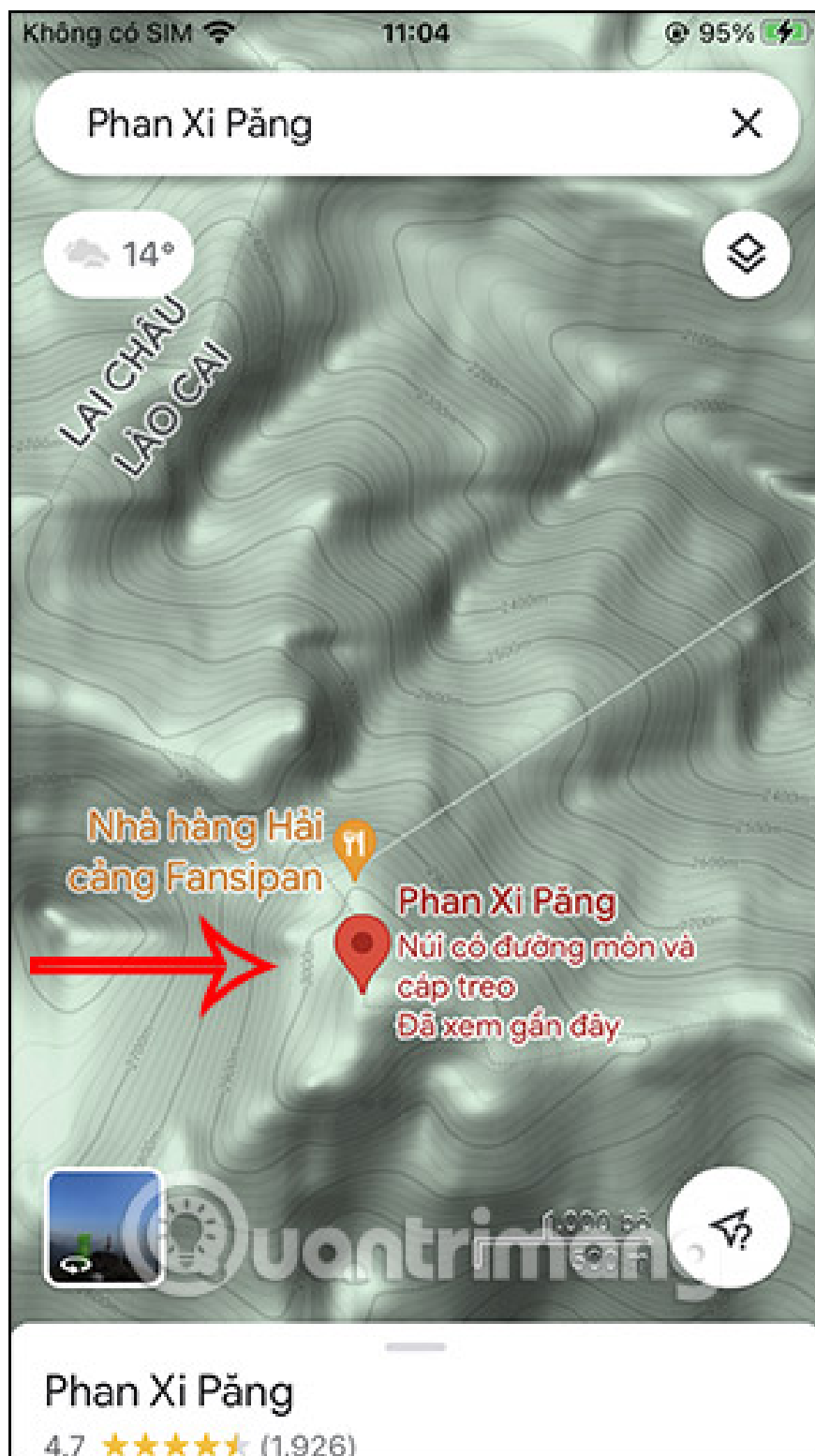
Chia sẻ địa điểm này?

Chia sẻ



Step 4:

The result will show the terrain for that location, along with the elevation for each point. Note that you should not zoom in on the location, as this will not display the elevation for that place.



2. Check the elevation of a location on Google Maps PC.

Step 1:

We open Google Maps on our computer and then enter the location into the search bar.



Step 2:

On the location interface on the map, click on **the Map Layers** option at the bottom of the interface, as shown in the image below.



At this point, different icons will appear; click on **the Terrain view type**.



Step 3:

Immediately, the Google Maps interface will switch to a topographic view, along with the elevation of each location. Each location will display a different elevation for us to track.



Below is an option to quickly toggle the elevation display mode on or off on the map, allowing users to quickly switch map interfaces.



You finished reading the article "**How to view the elevation of a location on Google Maps**" edited by the [TipsMake](#) team. We hope this article has provided you with many useful tech tips and tricks. You can search for similar articles on tips and guides. Thank you for reading and for following us regularly.