

How to check the computer IP address with TrueIP

TrueIP is software to view computer IP addresses, check the network and network addresses clearly to copy storage parameters.

IP addresses are simple and important addresses that can connect devices to each other when sharing data. There are many ways you can check your computer's IP address, such as checking with a Windows Cmd command, viewing it right on your computer, or using a computer IP inspection software. In which, there is TrueIP software that Network Administrator wants to introduce to you in the article below.

TrueIP will allow users to view computer IP addresses, with two functions of scanning LAN IP addresses, local and scanning external network IP addresses. Besides, users can save the IP addresses used, with local IP addresses. So how to check your computer's IP address with TrueIP?

1. Fake IP software, change IP, surf anonymously quality
2. Fix IP address conflict error on Windows computer
3. Instructions to change IP address from Command Prompt

How to view the computer IP address using TrueIP

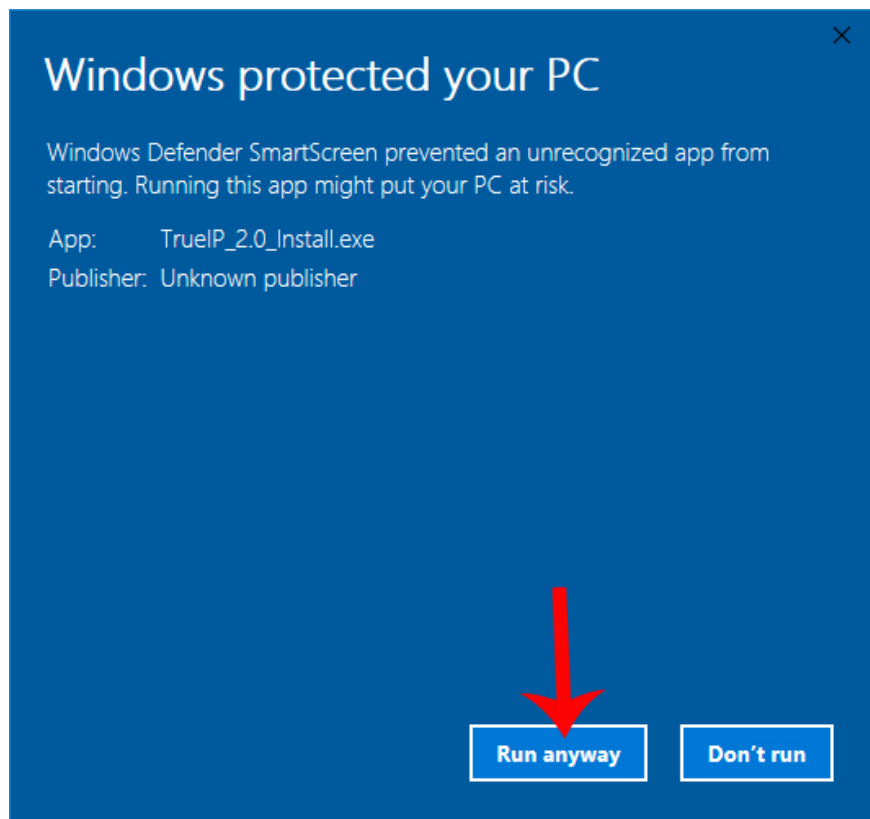
Step 1:

First, users access the link below to download TrueIP software to the computer. The software has extremely light capacity.

1. <https://www.haztek-software.com/applications/network/trueip/>

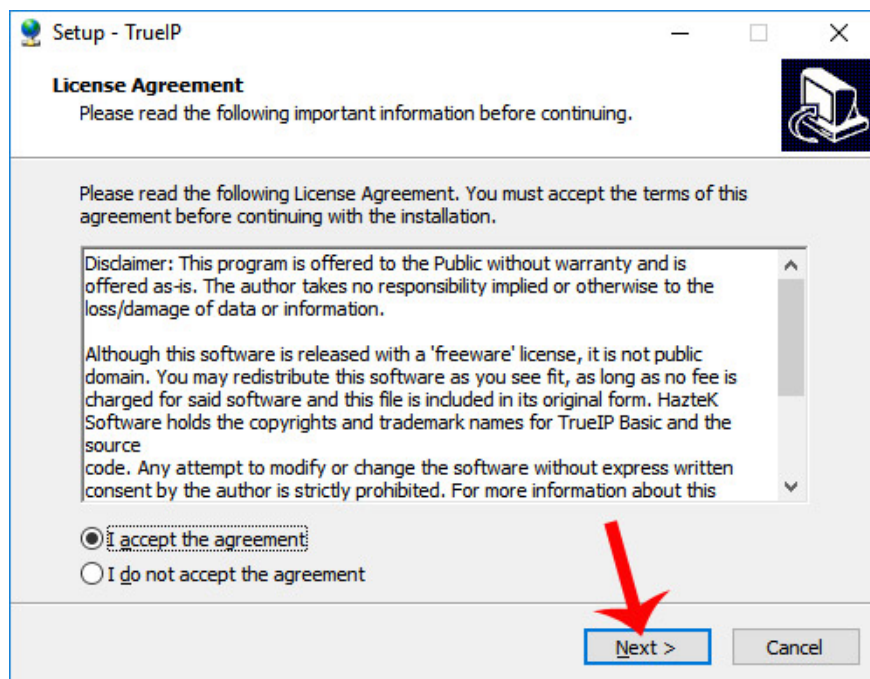
Step 2:

Install software. In case the Windows Protected your PC interface appears, click the **More info** button and then click **Run anyway** to agree to install the software.



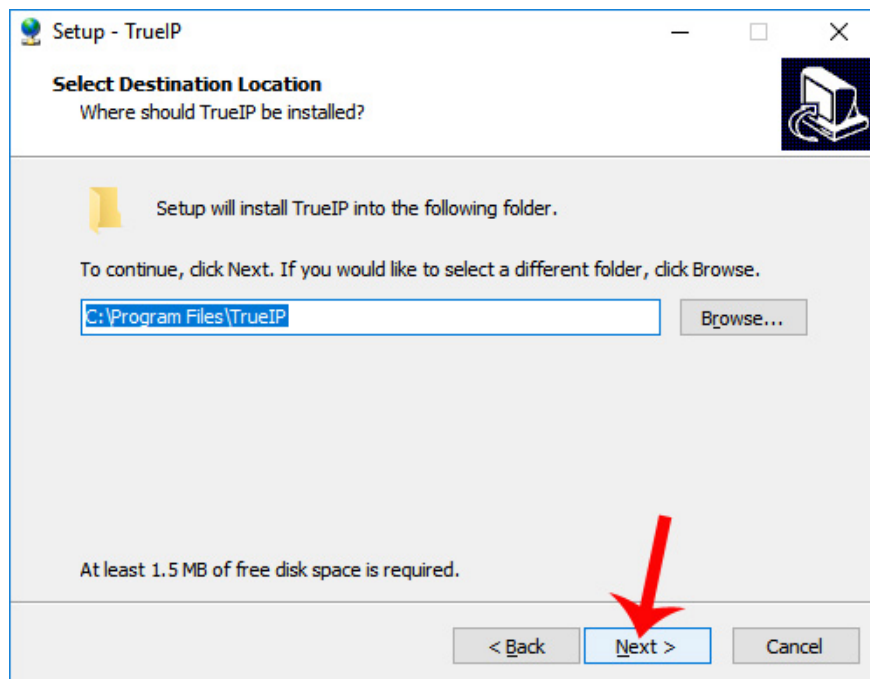
Step 3:

In the new interface, select **I accept the agreement** to agree to the terms and then click **Next** to continue.



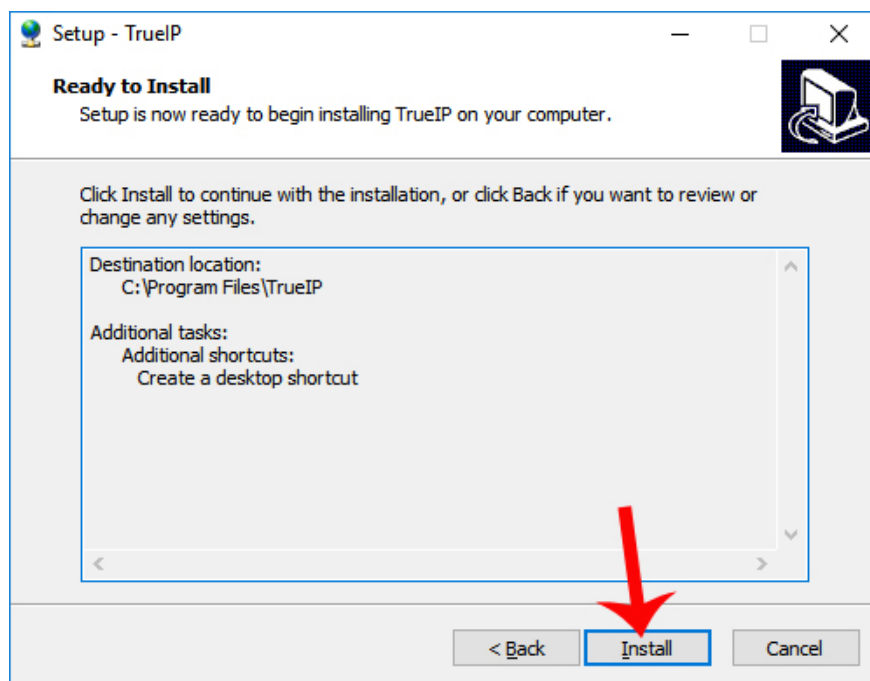
Step 4:

Next, if the user needs to change the TrueIP installation directory, click **Browse**, or skip and click **Next** at the bottom to continue.

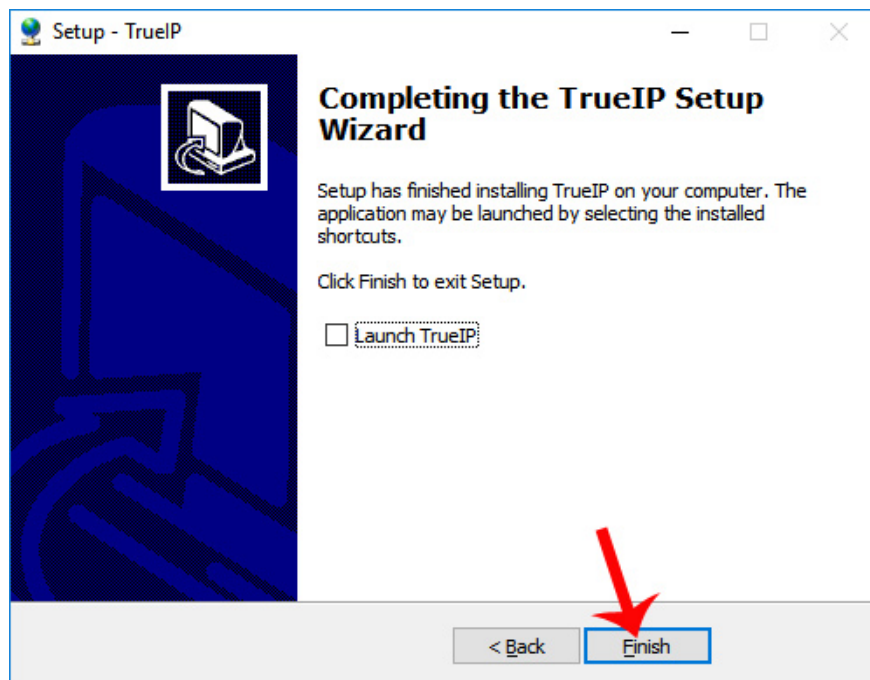


Step 5:

Finally click **Next . Install** and wait for the software installation process to complete.



Finally, **click Finish** to complete the TrueIP installation on the computer.

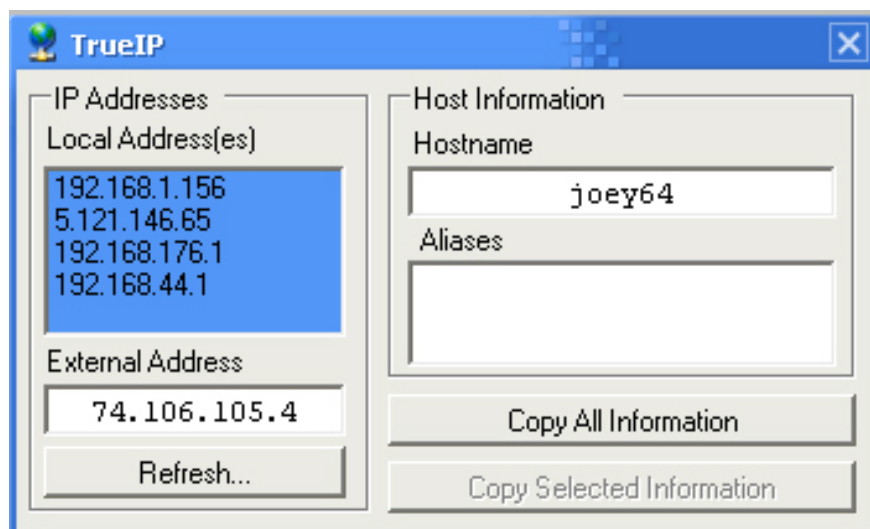


Step 6:

Start the software on the device and see the IP parameters on the computer.

In the IP Addresses section, we have two parameters: Local Address and External Address.

1. Local Address: IP address in the local network, LAN system and usually in the form of 192.168.1.x with x from 1 to 255.
2. External Address: IP address recognized when connecting to foreign services and websites. This is also the common address for a computer network.

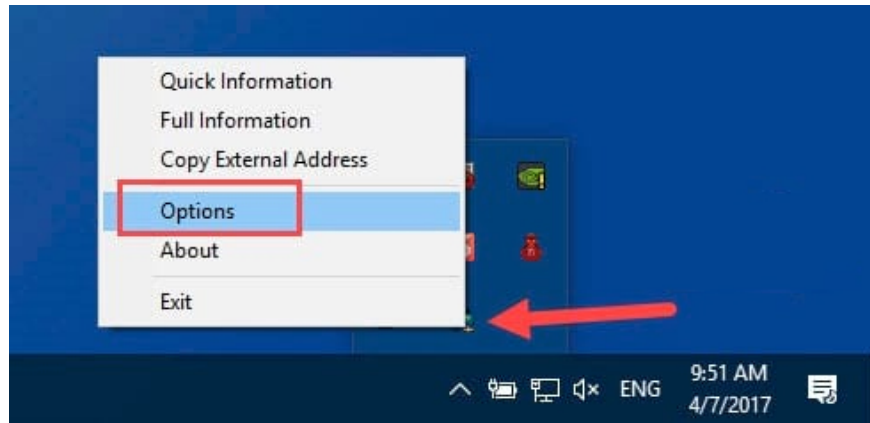


Step 7:

If you want to copy device information, the IP address includes Local and External for storage or sharing, click **Copy All Information** .

Step 8:

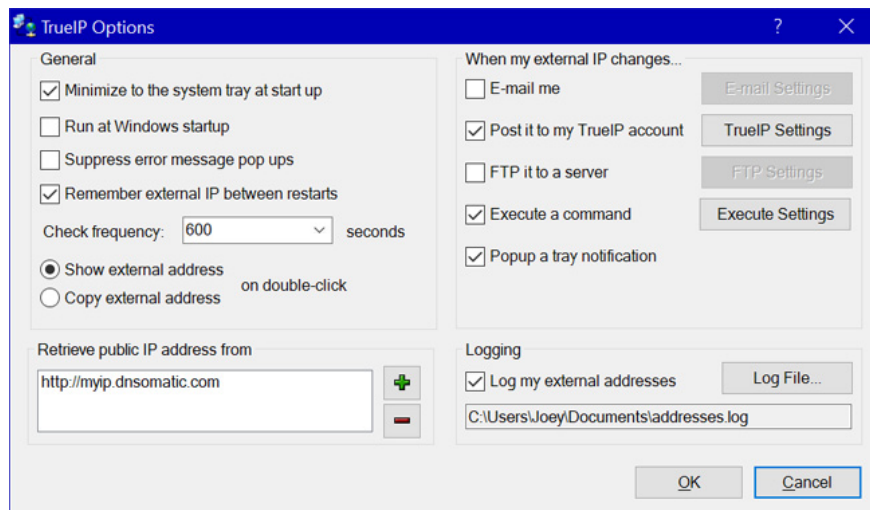
When you right-click on **the TrueIP icon in the Taskbar**, you'll see there are several options for the software. Click **Options** to access the software custom interface.



In this interface, the **General** section is a software option that displays pop up message, runs stealth mode or starts with Windows with Run at Windows Startup.

In the **Check Frequency** option, set the maximum IP check period each time, the default is 600 seconds and you can change it.

Besides, TrueIP also supports notification when IP address changes, checks IP addresses by server and archives Log File.



With TrueIP software, we can easily know the computer's IP address as well as other parameters through the parameters in Local Address and External Address. The program works simply, with extremely basic features so users can check the IP address quickly.

I wish you all success!

You finished reading the article "**How to check the computer IP address with TrueIP**" edited by the [TipsMake](#) team. We hope this article has provided you with many useful tech tips and tricks. You can search for similar articles on tips and guides. Thank you for reading and for following us regularly.
