

# How to check the computer driver on Windows 10

On Windows 7 when installing the Driver we have to do it manually, one by one, up to Windows 10 you do not need to do anything but still have all the Drivers on your computer. In this article, Software Tips will guide you on how to check Computer Driver on Windows 10.

Windows 10 is a relatively complete operating system for the user experience of Microsoft when it is integrated with many advanced features. As on Windows 7 when installing the Driver we have to do it manually, one by one, up to Windows 10 you do not need to do anything and still have all the Drivers on your computer. In this article, Software Tips will guide you on how to check Computer Driver on Windows 10.



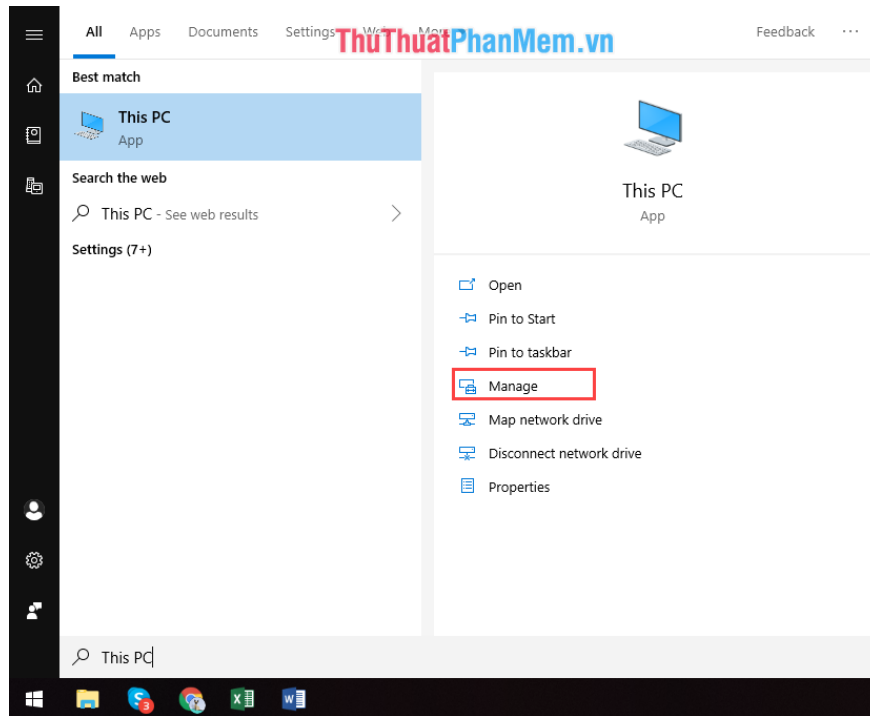
## 1. Why to check Driver on Windows 10

Although Windows 10 operating system has an analysis algorithm and automatically installs all the necessary drivers for your computer. But in some special cases, if the Windows 10 update itself fails or the Driver is not found, we have to do it manually. Because of this, we should check our computer to see if there are enough drivers to use or not.

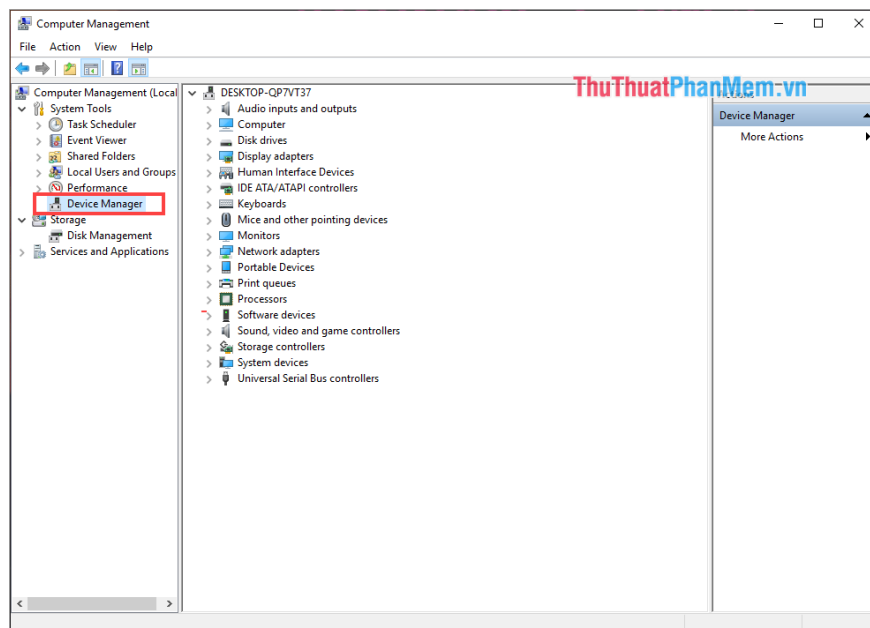
## 2. How to check the Driver on Windows 10

On the market today there are many software that supports Driver 10 testing on Windows, but in fact they are not accurate. Because the software can not interfere deeply into the hardware system to check. We check directly with the Windows system will be most accurate.

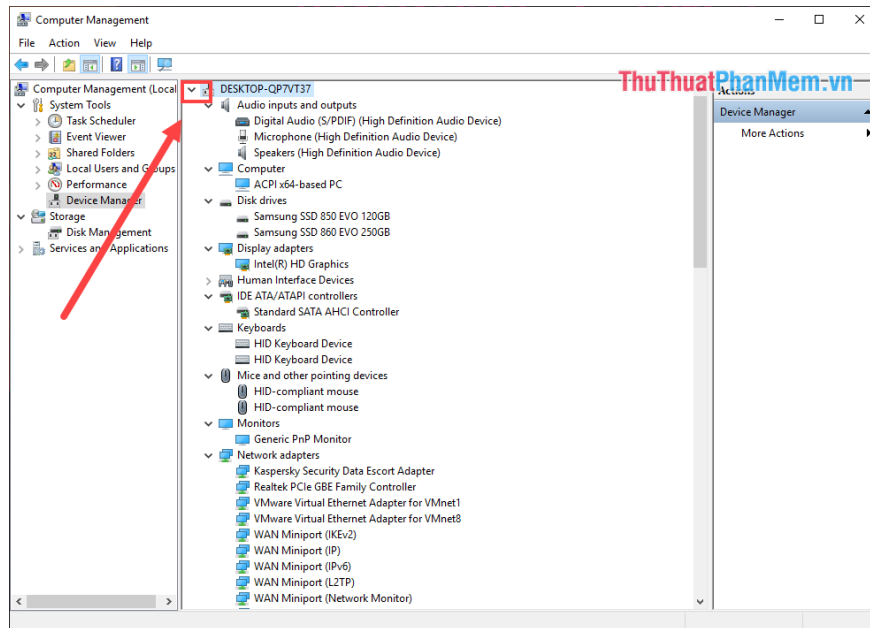
**Step 1:** Open the **Start Menu** and enter **This PC**, select **Manage** .



**Step 2:** When the **Computer Management** window appears, select **Device Manager** .



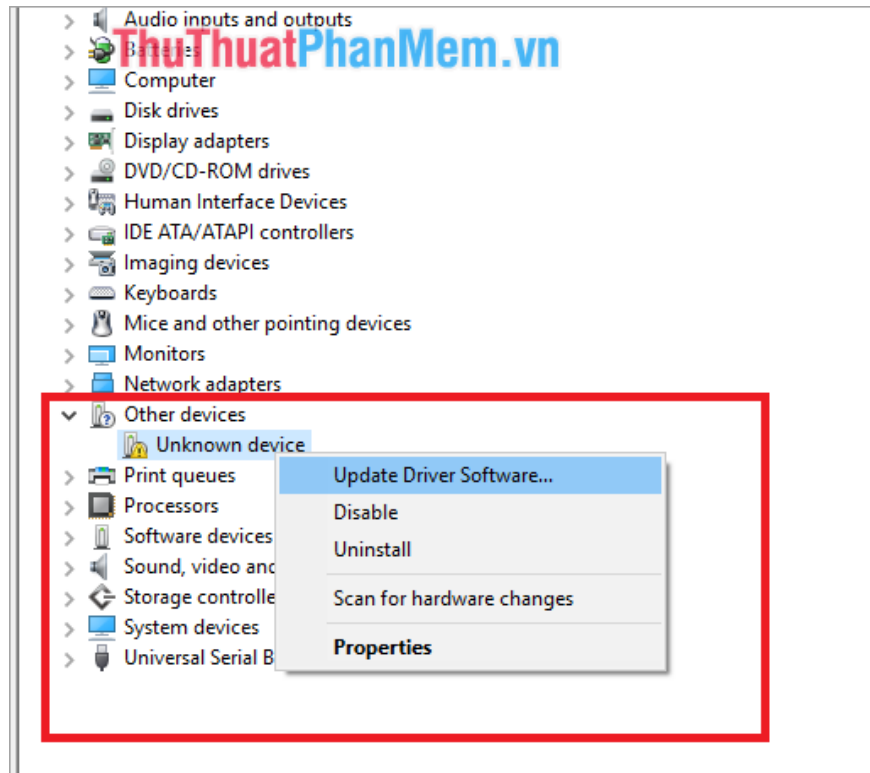
Here appear all the main items of the Driver. You want to see which Driver will click the extended arrow to see details.



### 3. How to update the Driver

If the driver is defective, missing, or damaged, then the driver will have a yellow exclamation mark icon. You rely on this to check.

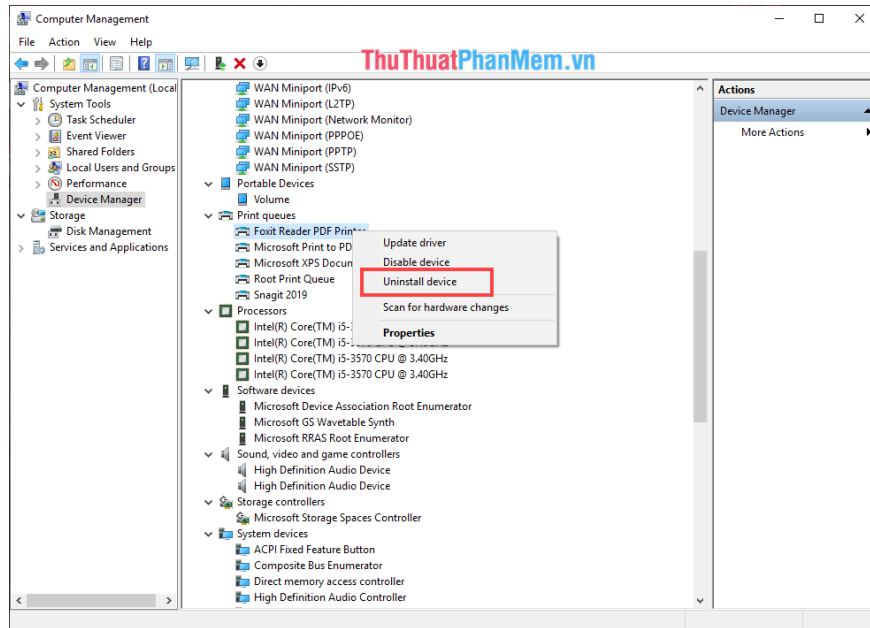
Update Driver as follows: Right-click on the **Driver** and select **Update Driver Software** .



## 4. Uninstall Driver

In some cases you need to Uninstall, remove the Driver to reinstall then you do the following:

Right-click on **Driver** and select **Uninstall device** .



Thus, in this article Software Tips have guided you how to check the Driver on the computer most effectively. Good luck!

You finished reading the article "**How to check the computer driver on Windows 10**" edited by the [TipsMake](#) team. We hope this article has provided you with many useful tech tips and tricks. You can search for similar articles on tips and guides. Thank you for reading and for following us regularly.