

How to check the bottle thickness of laptop dell, hp, asus, ... does not need software

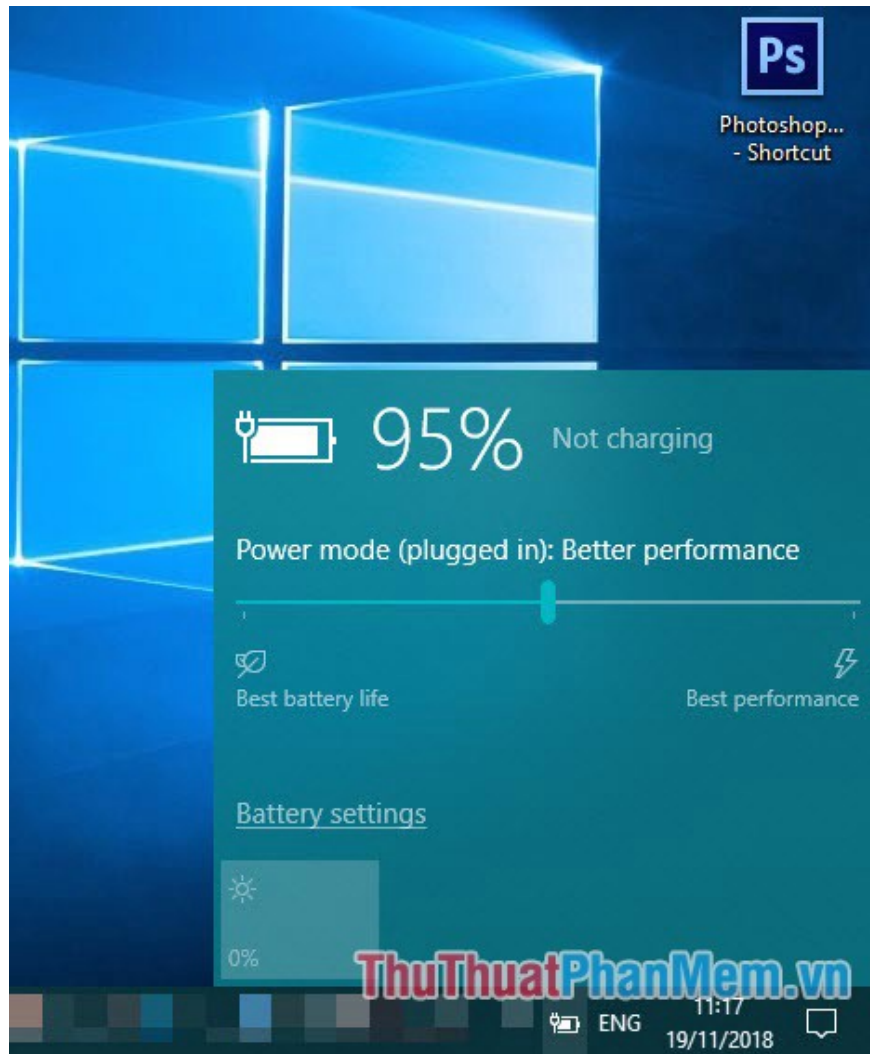
How to check the bottle of laptop PIN without software. There is one problem that all laptop manufacturers have not yet been able to solve thoroughly is the battery. Even with built-in battery bottle protection, automatically switches to mains power k



Today, there are many new product lines on the market, but laptops still occupy a solid position in the technology world that no product can replace. The big guys about laptop product lines like Dell, HP, Asus . always research and produce the most advanced laptop versions every year.

But there is one problem that so far all laptop manufacturers have not been able to solve thoroughly is the battery bottle. Even when the battery bottle is built-in, automatically switches to the power source when the battery is 100% full, but over time the battery bottle is still unavoidable.

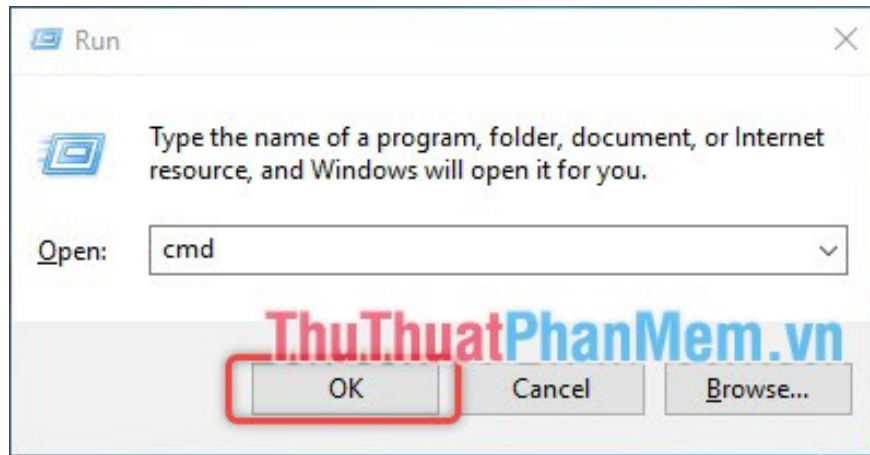
There are many software to help users test the battery level as well as see the parameters of the battery in use but not all software is safe, moreover it is very laborious in finding and installing. **Thuthuatphanmem.vn** would like to introduce you how to check the laptop's PIN without using external software.



1. Open the Run window box

Method 1: You can use the key combination **Windows + R** to open the Run dialog box as quickly as possible.

Method 2: You can search for the **Run** app in **Start** or search in the Start **Search** box with the keyword '**Run**' to open the app.

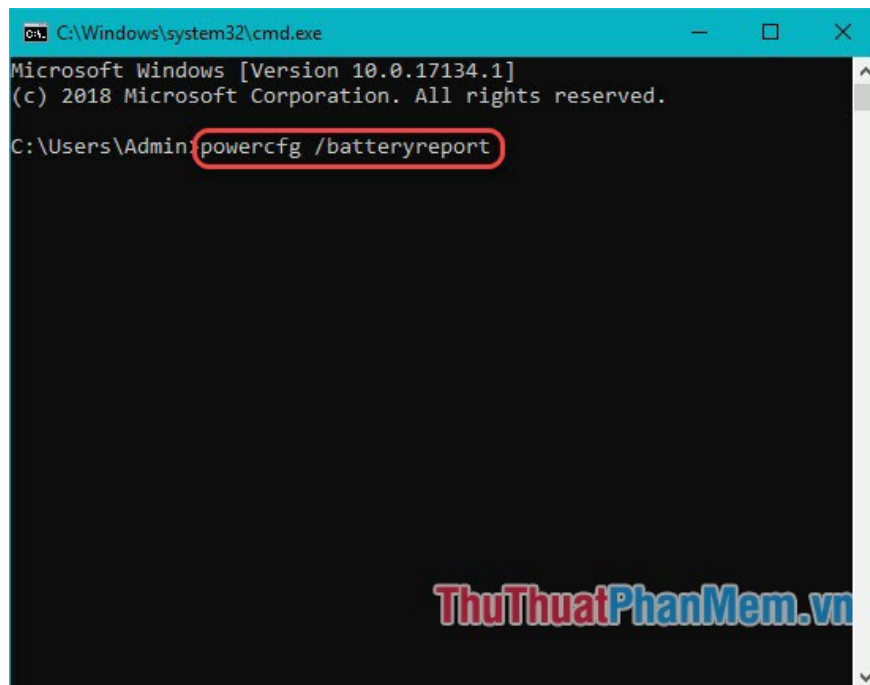


Then type *cmd* in the **Open** box and click OK to run the command.

2. Type the code to export a laptop battery status report

A black window will appear when you run the *cmd* command .

Copy the following command to the back of the blinking cursor: *powercfg /batteryreport*

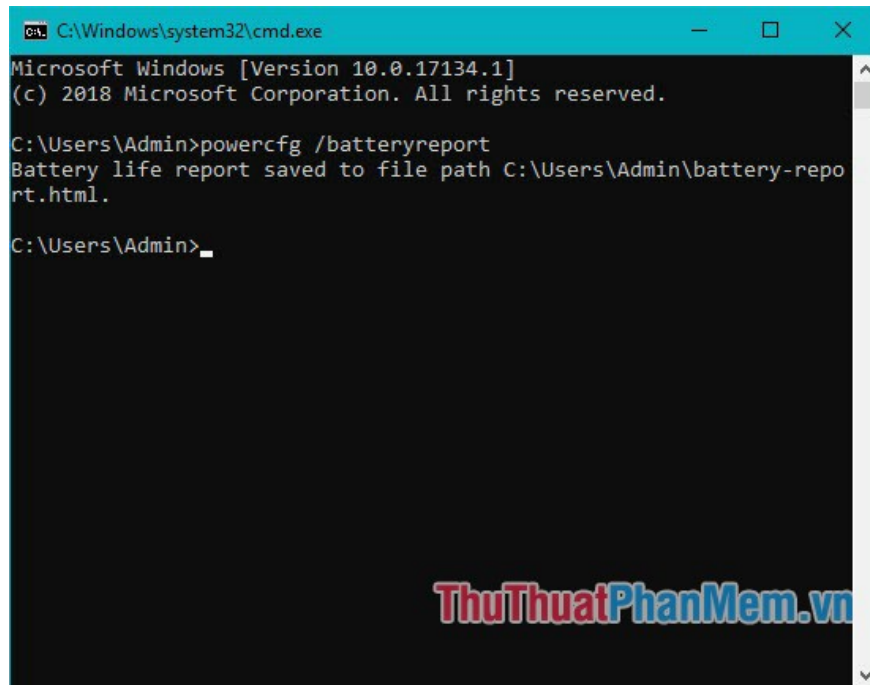


Finally press Enter to run the command, it may take a few seconds for the battery status report to be completed.

```
C:\Windows\system32\cmd.exe
Microsoft Windows [Version 10.0.17134.1]
(c) 2018 Microsoft Corporation. All rights reserved.

C:\Users\Admin>powercfg /batteryreport
Battery life report saved to file path C:\Users\Admin\battery-report.html.

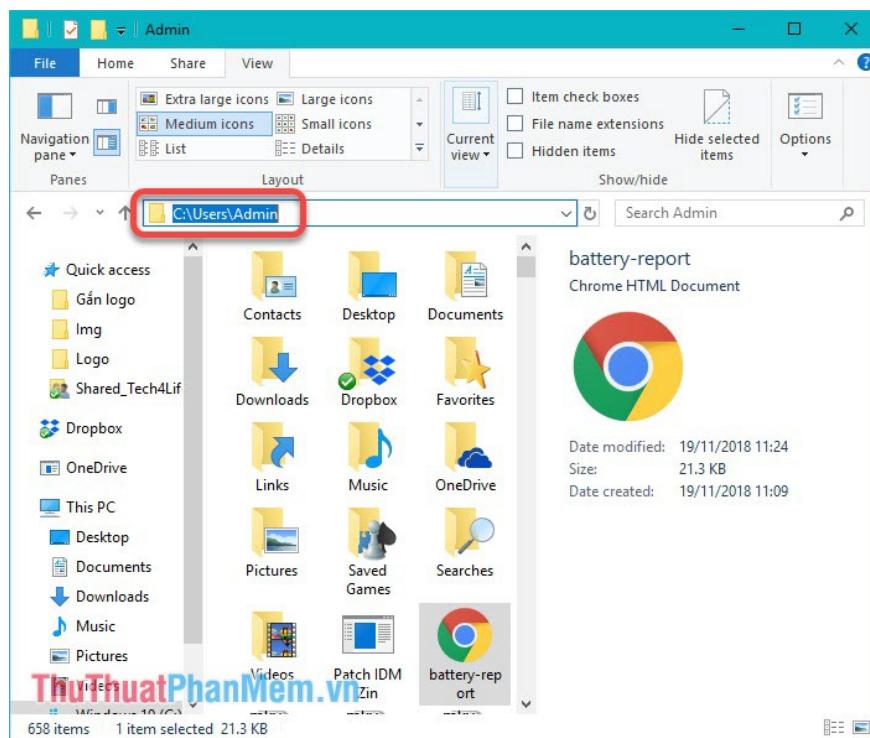
C:\Users\Admin>_
```



3. Open and view the laptop battery status report

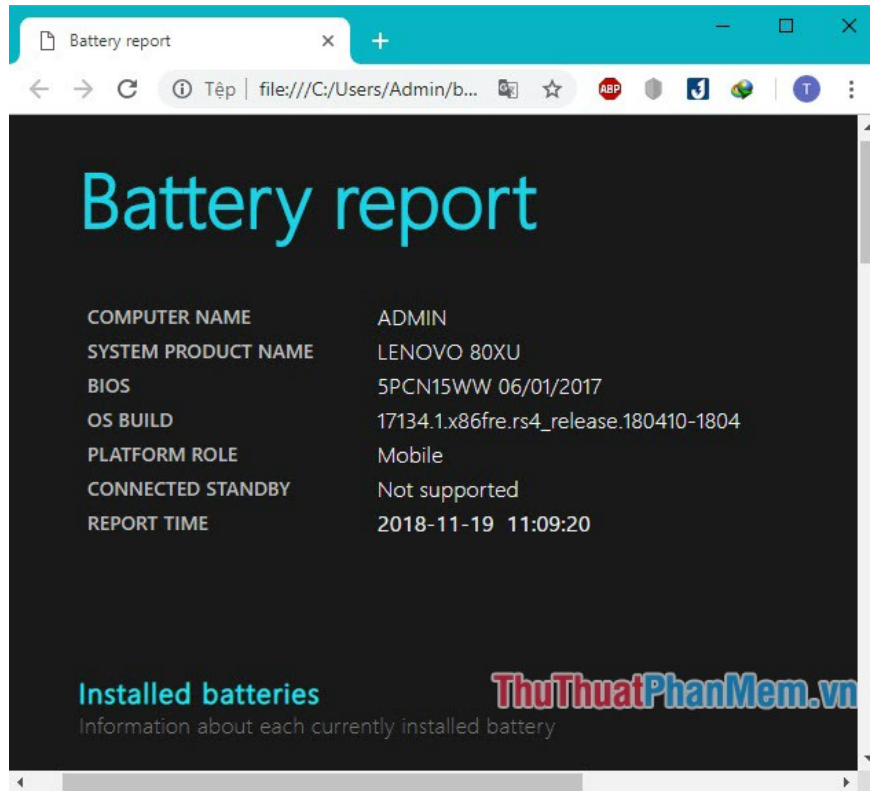
Your laptop battery status report will be saved as HTML.

You access this address *PC / Drive C / User / Your account name* . You search in this directory an HTML file called **battery-report** . This is the file that reports on the battery status of the laptop you've just created.

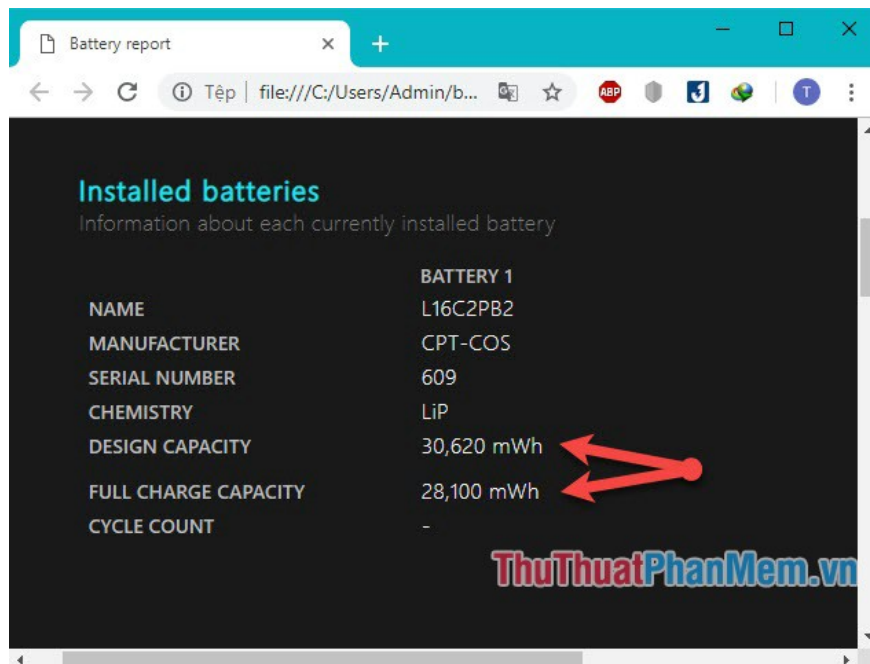


You can click directly or drag the file into your web browser to open it.

Your report will be displayed as follows:



The report will include all the information you need but here we only need to pay attention to the two lines in the **Installed batteries** section .



DESIGN CAPACITY: 30,620 mWh

FULL CHARGE CAPACITY: 28,100 mWh

With **the Design Capacity** is *designed capacity* while **the Full Charge Capacity** is *Capacity largest use*.

As an example in the picture with a Capacity of 28,100 mWh and a design capacity of 30,620 mWh, the laptop will have the battery level calculated as follows:

$$100\% - (28,100 / 30,620) \times 100\% = 8.23\%$$

This is a fairly low battery level, meaning that the battery of this laptop can still serve you normally.

Have you tried checking the battery life of your laptop? Please use the tips that **Thuthuatphanmem.vn** guide to check the battery for laptops.

Thank you for watching this article, wish you success!

You finished reading the article "**How to check the bottle thickness of laptop dell, hp, asus, ... does not need software**" edited by the [TipsMake](#) team. We hope this article has provided you with many useful tech tips and tricks. You can search for similar articles on tips and guides. Thank you for reading and for following us regularly.