

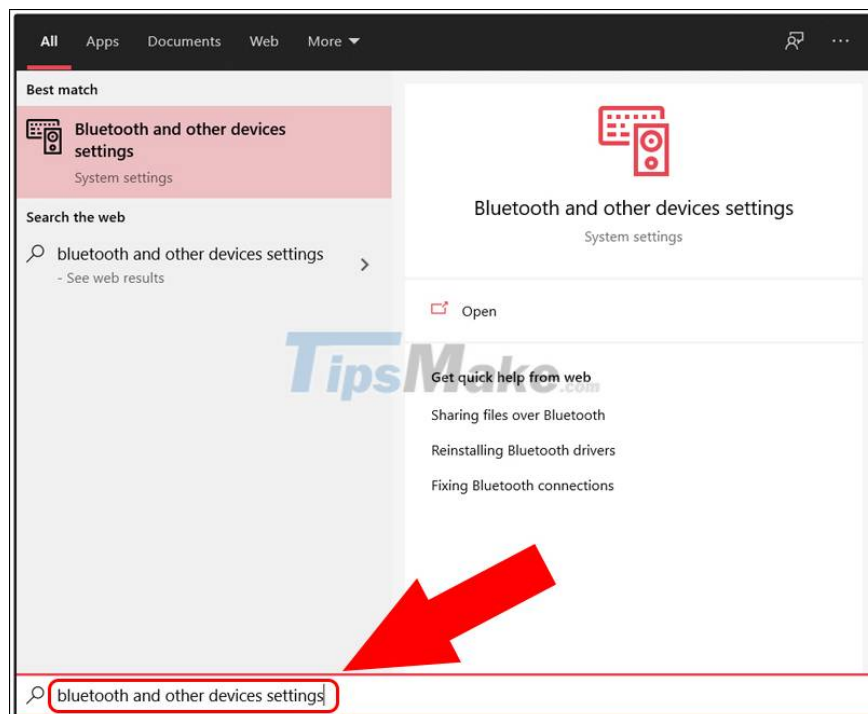
How to check the Bluetooth version on a Windows 10 computer

The article guides how to check the Bluetooth version in use on computers, laptops, Windows 10. Click to see details!

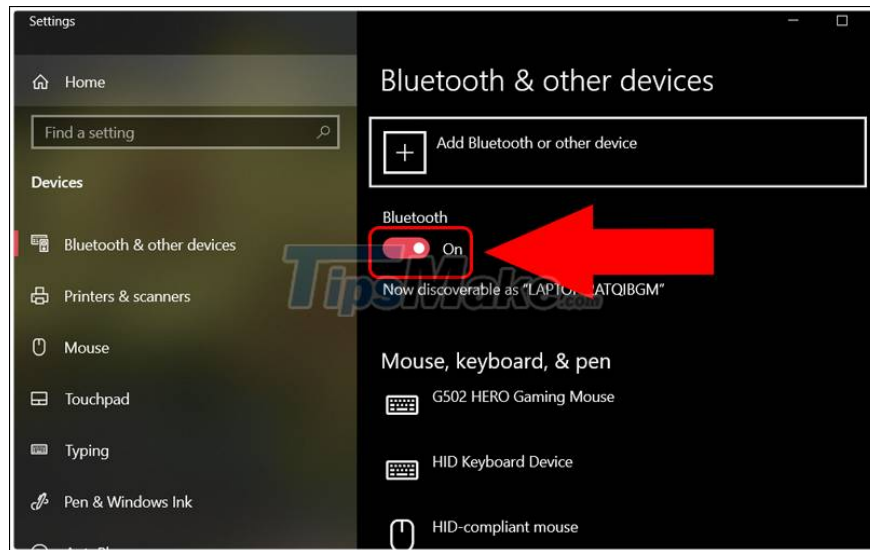
Currently, **Bluetooth technology** has developed dramatically, there are many different versions and of course, later versions will support more and more users. In this article, I will guide you how to check the Bluetooth version on your Windows 10 computer or laptop so you can upgrade when needed.

- Step 1: Open Device Manager

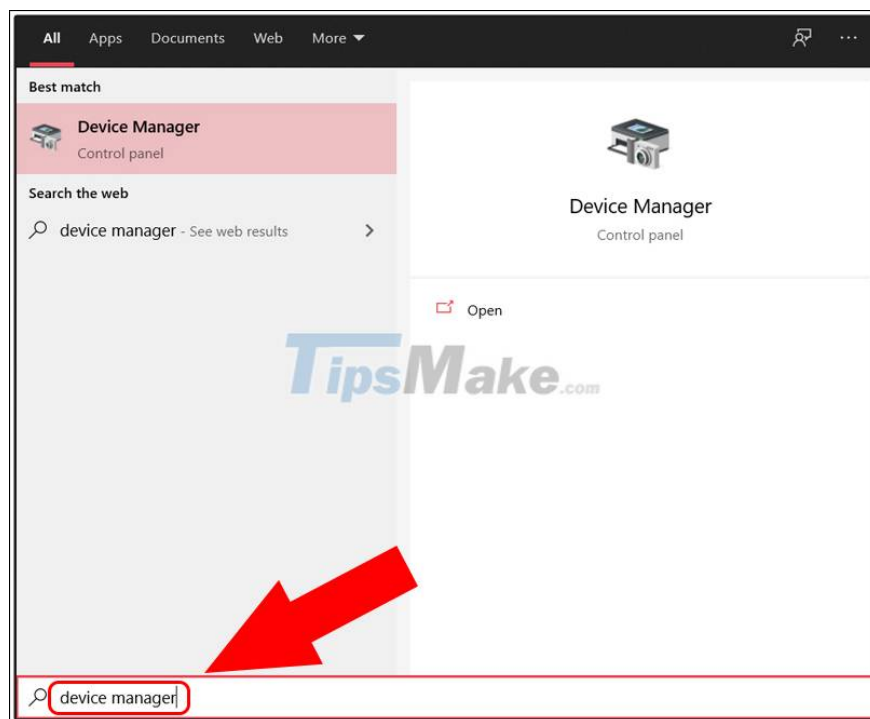
First, in order to view the Bluetooth version, you need to turn on Bluetooth on your computer . You press the **Start** button in the left corner of the screen or press the **Windows** key on the computer keyboard> Type "**bluetooth and other devices settings**"> Press **Enter** .



Turn on Bluetooth.

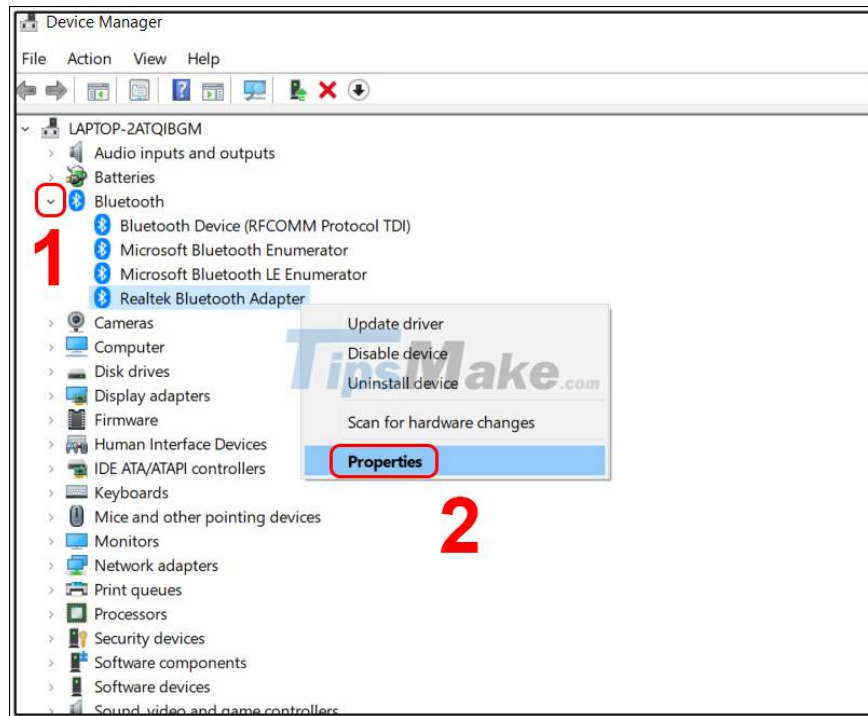


Click the **Start** button in the left corner of the screen or press the **Windows** key on the computer keyboard> Type " **device manager** "> Press **Enter** .

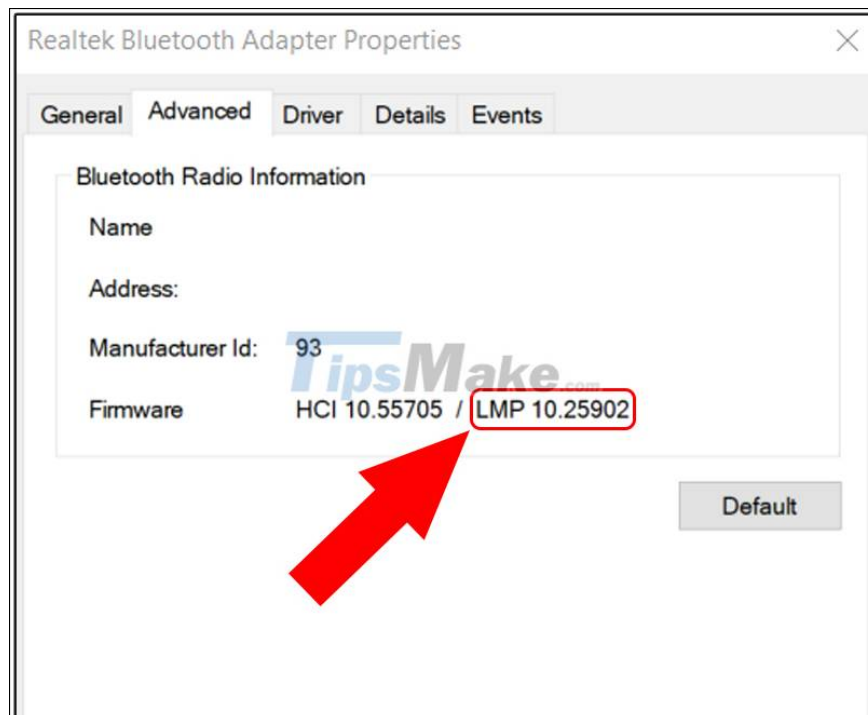


- Step 2: Observe Bluetooth parameters

On the [Device Manager](#) interface , click the arrow before the Bluetooth item> Right-click the Bluetooth driver> Select **Properties** .



You open through Advanced and look in the Firmware section. As shown in the picture, my computer is Bluetooth version **LMP 10.25902**. In which, LMP is Link Manager Protocol - link management protocol, while 10.25902 is used to compare with the table in Step 3 to know the Bluetooth version.



- Step 3: Comparing

You just need to match the number before the dot with the table below. For example, my computer is 10.25902, comparing to the table will be LMP 10 which is Bluetooth 5.1 panel session.

LMP	Bluetooth version
0	Bluetooth 1.0b
first	Bluetooth 1.1
2	Bluetooth 1.2
3.x	Bluetooth 2.0 + EDR
4.x	Bluetooth 2.1 + EDR
5.x	Bluetooth 3.0 + HS
6.x	Bluetooth 4.0
7.x	Bluetooth 4.1
8.x	Bluetooth 4.2
9.x	Bluetooth 5.0
10.x	Bluetooth 5.1
11.x	Bluetooth 5.2

Above is the step guide to you can check the version of the Bluetooth computers, laptops Windows 10. Thank you for watching and see you again in the following articles.

You finished reading the article "**How to check the Bluetooth version on a Windows 10 computer**" edited by the [TipsMake](#) team. We hope this article has provided you with many useful tech tips and tricks. You can search for similar articles on tips and guides. Thank you for reading and for following us regularly.