

How to check the application using Webcam using Process Explorer

Webcams can become a tool for unauthorized hackers to hack into your computer, stealing personal information such as social networking accounts.

Webcam is a useful feature on laptops and tablets so users can chat or exchange information, etc. through video calls. However, the webcam on your computer can become a tool for unauthorized hackers to access your computer, thereby stealing personal accounts or other important information. And no one will know if I will be tracked by the webcam on my computer.

So a lot of recommendations are sent to users that should turn off the webcam when there is no need to use. Also, if you want to check which program is using the webcam on your computer, please refer to the following article of Network Administrator.

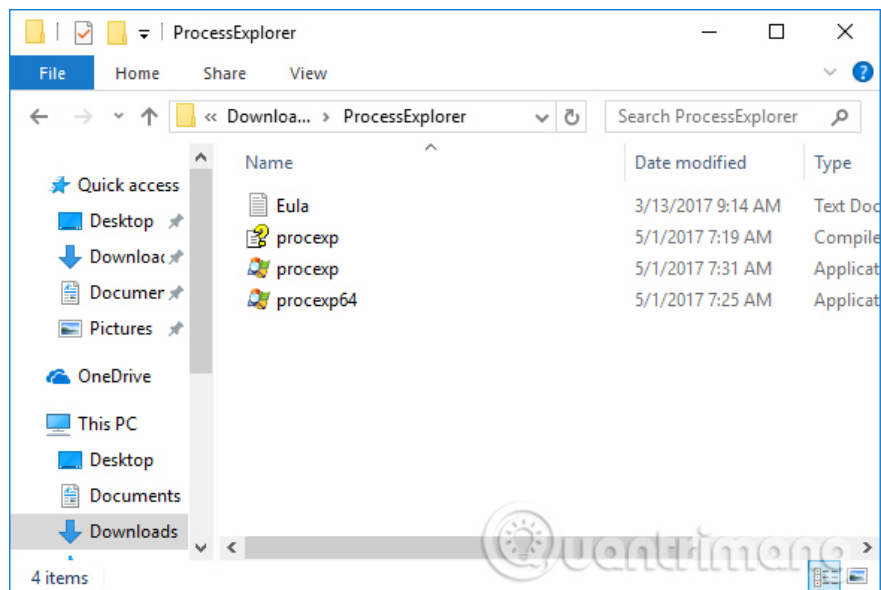
In order to know which applications are using Webcam on your computer, you will download the free Process Explorer application from Microsoft.

Step 1:

First, download the Process Explorer tool to your computer using the link below.

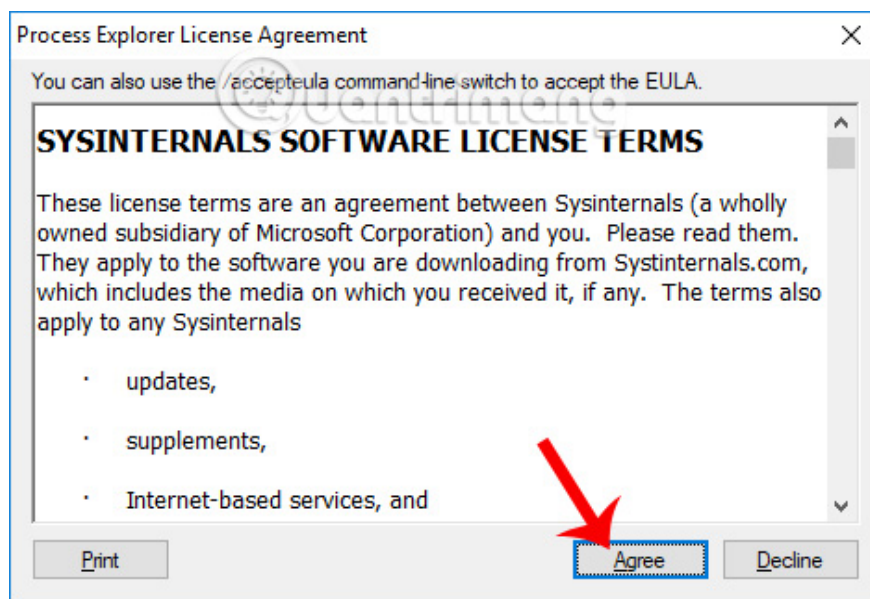
1. Download Process Explorer Windows

The capacity of the tool is quite light. After downloading, proceed to extract the .zip file. Next, in the Process Explorer extracted folder after extracting, click on the installation file. The tool will have 2 versions for 32-bit versions of Windows and 64-bit versions. You choose the right version of Process Explorer for your computer.



Step 2:

When clicking on the installation file of the program, the terms of use appear, click on **Agree** to agree to complete the installation.



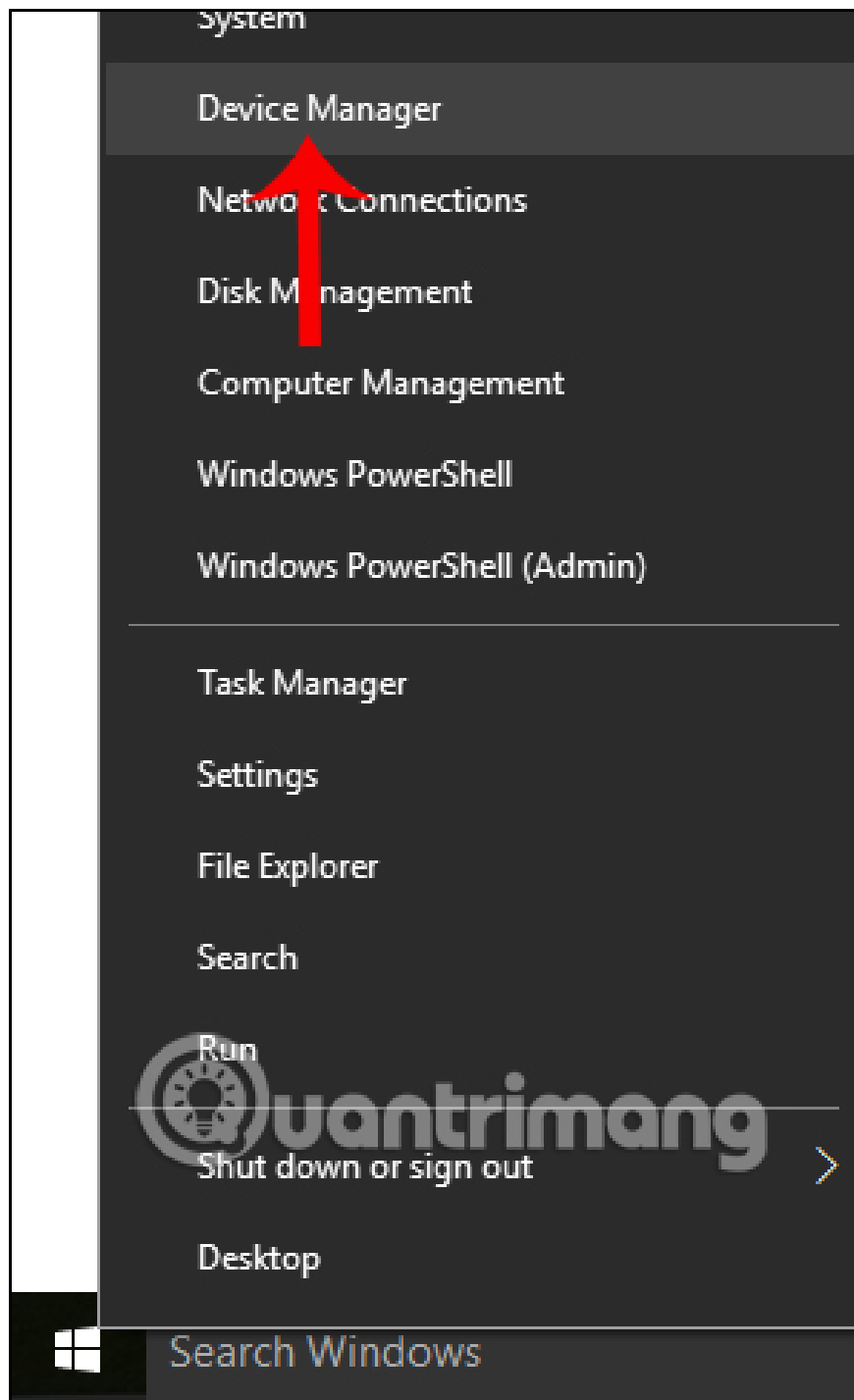
So, we have installed Process Explorer. The process is extremely fast, not many installation steps like other programs.

Process	CPU	Private Bytes	Working Set	PID	Description
winlogon.exe		1,640 K	6,340 K	2256	
dwm.exe	3.14	27,964 K	41,360 K	6852	
fontdrvhost.exe		5,780 K	14,068 K	3192	
igfxEM.exe		2,748 K	9,508 K	4784	igfxEM Module
explorer.exe	0.10	117,964 K	73,780 K	4936	Windows Explorer
MSASCuiL.exe		1,372 K	7,552 K	2492	Windows Defender notificati...
RtHdVcPl.exe		3,504 K	9,684 K	7080	Realtek HD Audio Manager
FMAPP.exe	0.04	1,220 K	6,476 K	1876	FMAPP Application
GrooveMonitor.exe		2,076 K	10,660 K	3252	GrooveMonitor Utility
Viber.exe	0.19	174,784 K	47,532 K	6516	Viber
OneDrive.exe		22,392 K	17,584 K	4796	Microsoft OneDrive
UniKeyNT.exe	0.09	2,112 K	10,476 K	1200	
CocCocUpdate.exe		1,912 K	36 K	5072	CocCoc Update
CocCocCrashHandler.exe		1,312 K	60 K	5408	CocCoc Update
Photoshop.exe	0.20	304,484 K	93,516 K	5740	Adobe Photoshop CS2
chrome.exe	0.23	169,400 K	202,712 K	4200	Google Chrome
chrome.exe					

CPU Usage: 52.79% Commit Charge: 71.72% Processes: 87 Physical Usage: 85.36%

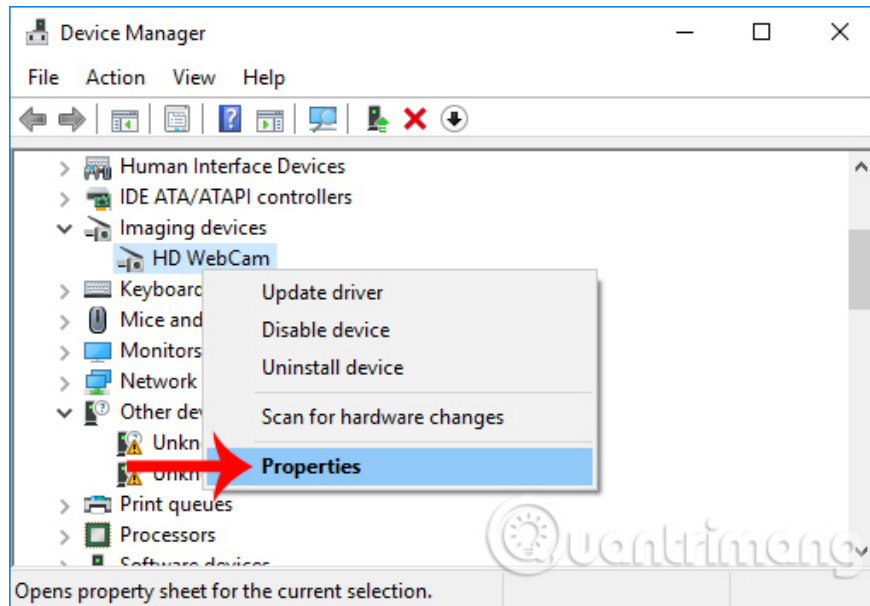
Step 3:

Next, we will **access Device Manager** on the computer. Right-click the Start icon and select Device Manger. Or you can press Windows + R to open the Run dialog box and type devmgmt.msc keyword and click OK to access Device Manger.



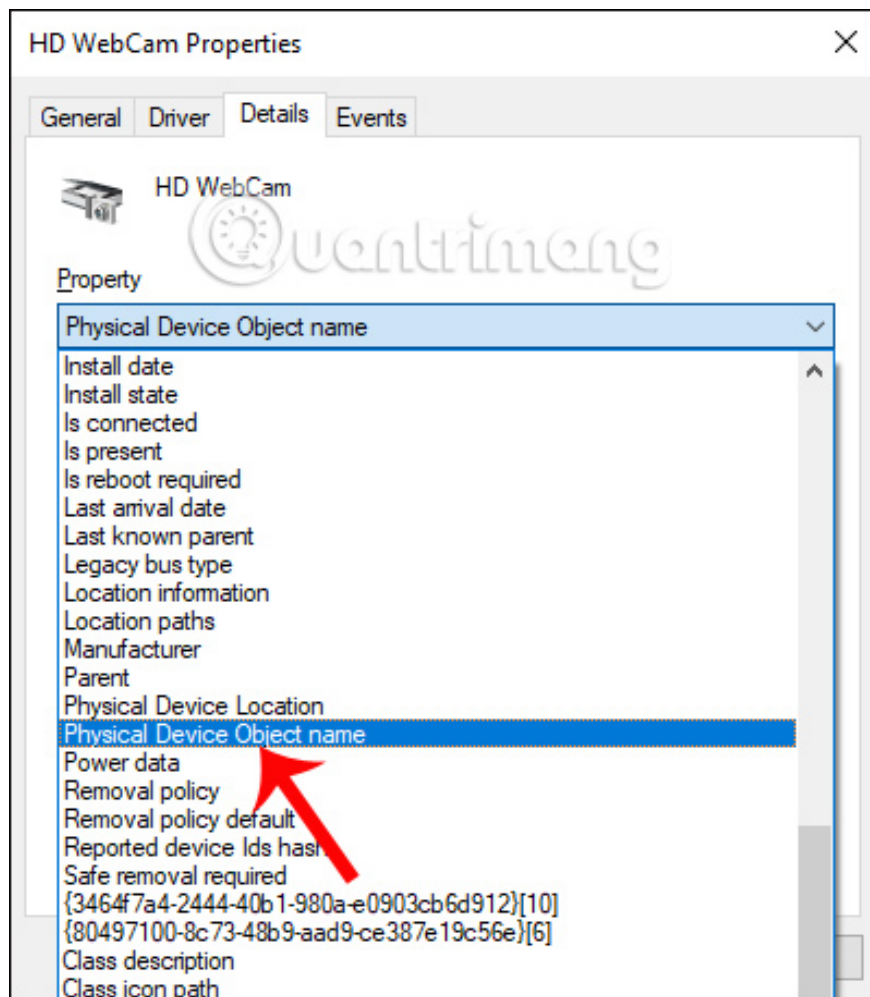
Step 4:

In the Device Manager interface, click the **Imaging Devices** item. In the drop down list, the user will see the name of the webcam device that is being used on the computer. Right-click on the webcam device and select **Properties** .

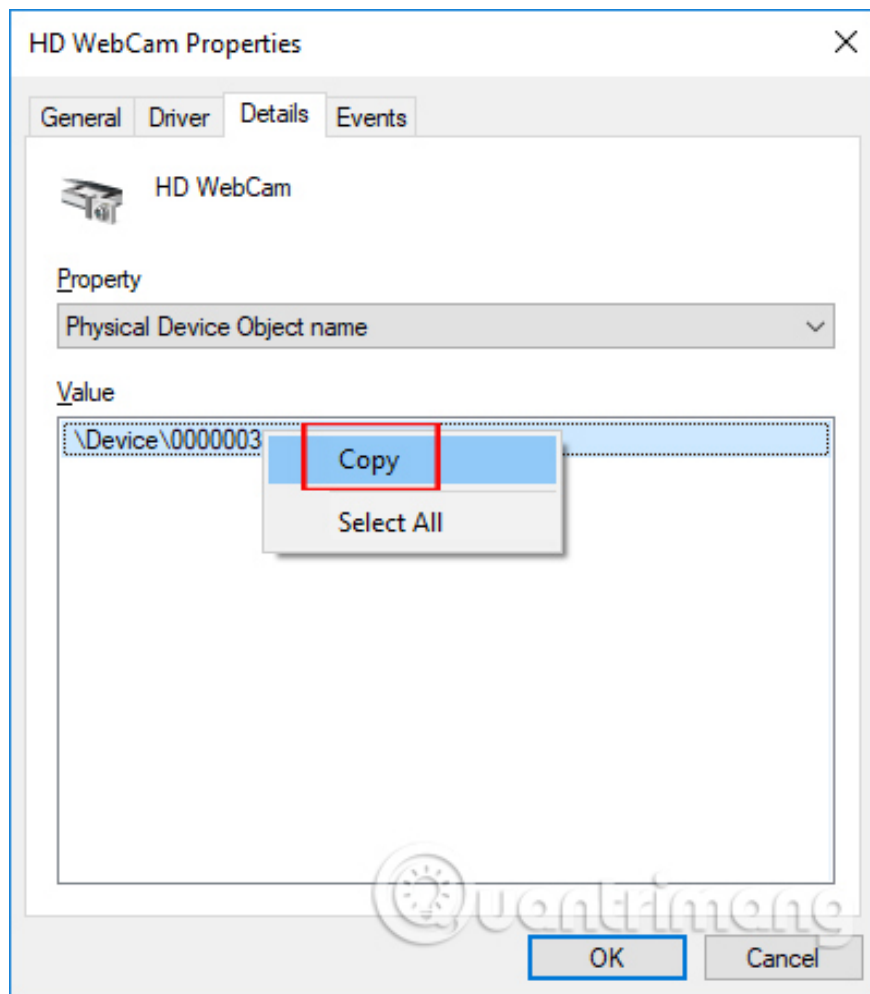


Step 5:

A new dialog box appears, click the **Details tab** to see information about the webcam device. In the **Property** section, select **Physical Device Object Name** from the list.

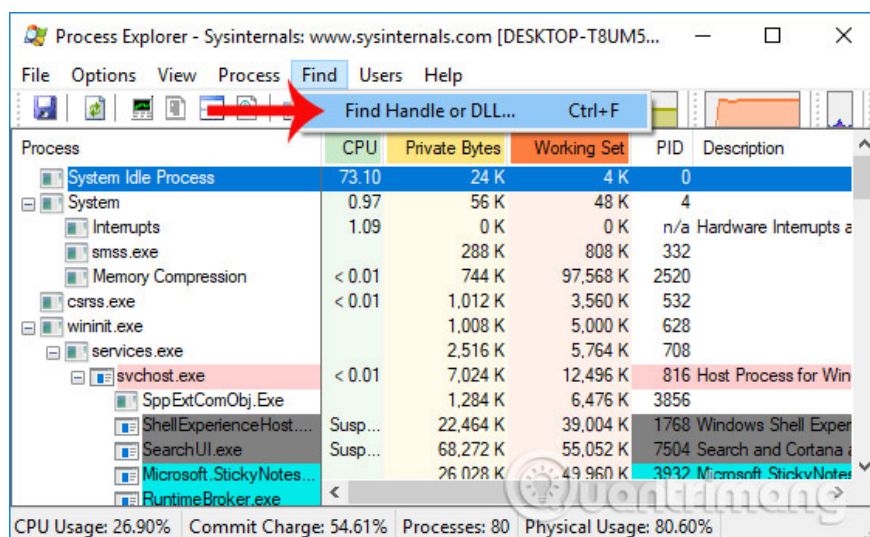


Then **the Value section** will see the information of the webcam device. Right-click on that number and **click Copy** . The value of this Value will be different because the webcam device is not the same.



Step 6:

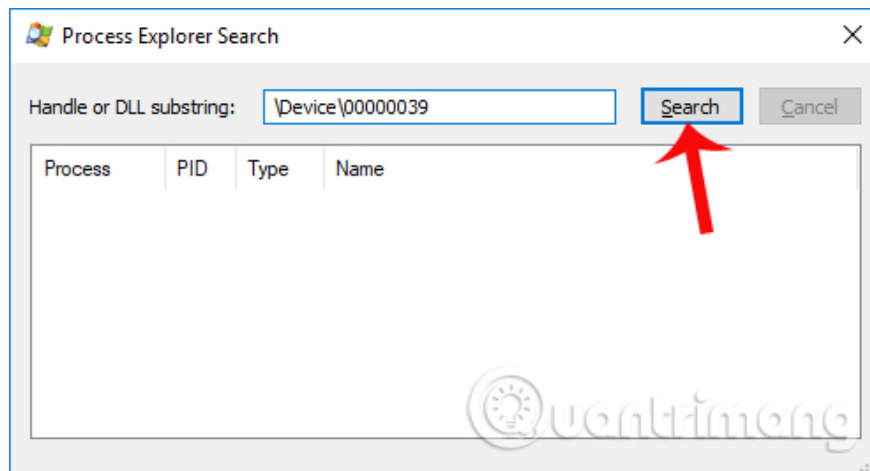
Access the Process Explorer interface, then press Ctrl + F or select **Find** then select **Find Handle or DLL** .



Step 7:

Appears the value input frame of the webcam device. We right-click and select Paste to paste the value of the copied device. Next press **the Search button** to search.

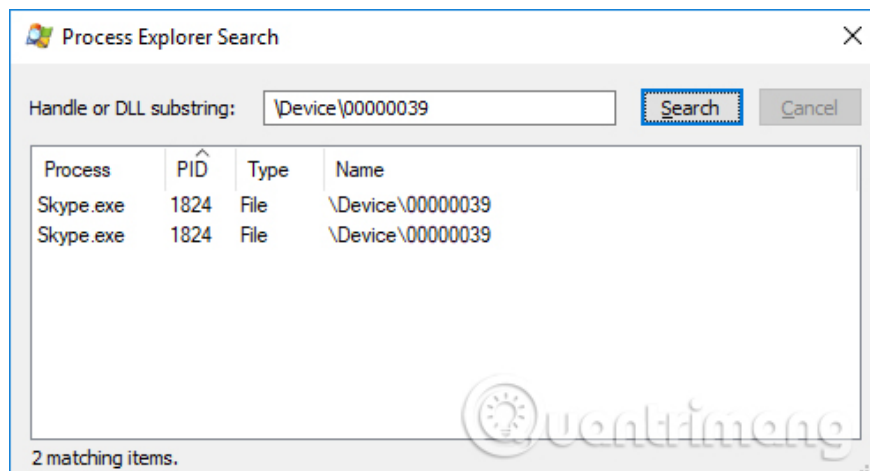
The tool will search for all applications that are using the webcam.



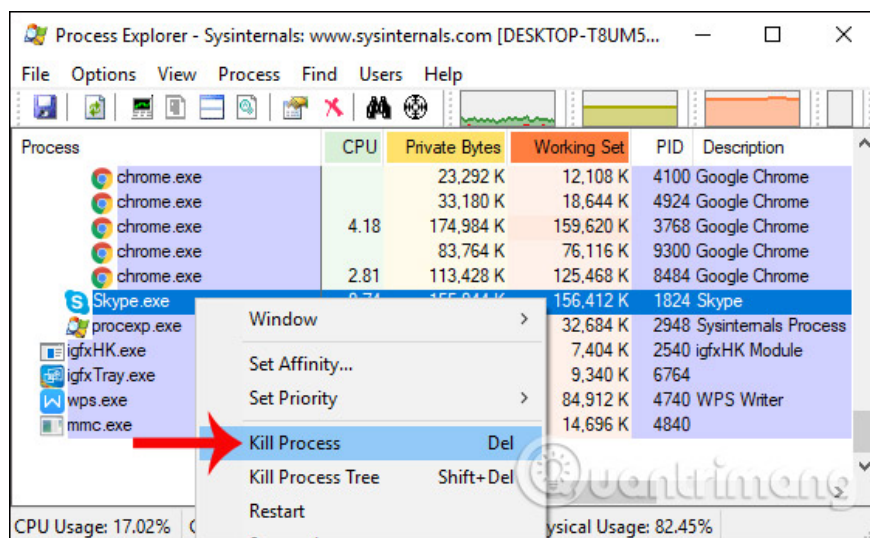
Note to users , if any application uses webcam10 seconds ago and no longer uses it while you perform a search using Process Explorer, the application will not be found.

Step 8:

As a result, the tool will aggregate which programs are using the webcam on the computer.



If you are unsure about the safety of the software, applications that are using the webcam on your computer, it is best to stop using the application and then remove them. At Process Explorer interface, right-click on the application and select **Kill Process** to temporarily stop the application. Finally, remove the application from your computer.



Thus, with Process Explorer, users can check which applications are using the webcam on the computer. In case of suspicious application detection, we can stop running the application right on Process Explorer interface, thereby uninstalling to avoid the case of attacking the computer via webcam.

I wish you success!

You finished reading the article "**How to check the application using Webcam using Process Explorer**" edited by the [TipsMake](#) team. We hope this article has provided you with many useful tech tips and tricks. You can search for similar articles on tips and guides. Thank you for reading and for following us regularly.