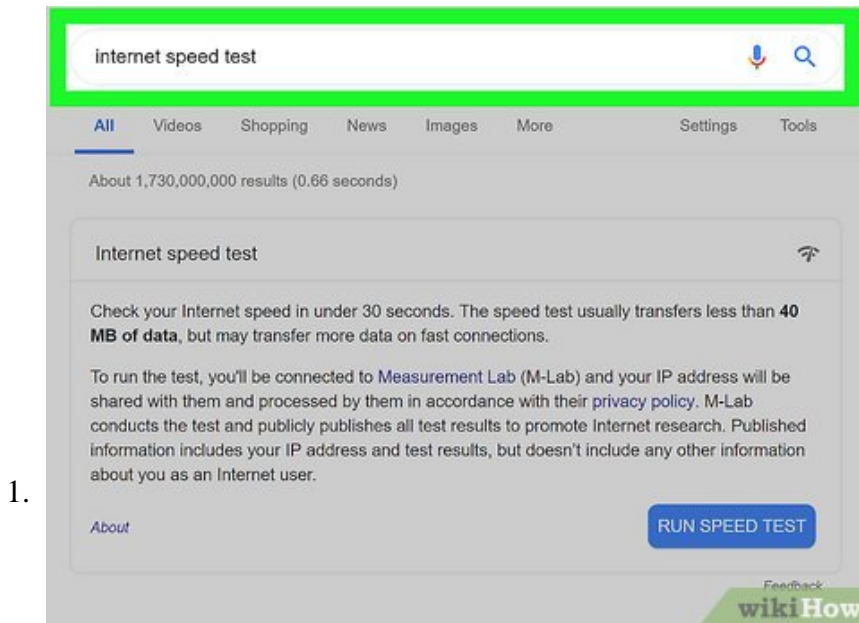


How to Check Internet Speed

This wikiHow teaches you how to see the upload speed and download speed of your Internet connection, as well as the speed of the connection between your computer and your router. Knowing your Internet speed can help you figure out what you...

Method 1 of 4:

Running an Internet Speed Test



Go to the Google Speed Test page. Open a Google search page by going to <https://www.google.com> in a web browser or open the Google app on your device and type `internet speed test` into the search field. This will bring up an "Internet speed test" window at the top of the Google search results.

1. You can use this method on a computer, phone, or tablet.
2. This method will use Google's built-in internet speed testing tool. There are other alternatives you could use, such as Fast.com, if you prefer an alternative.

EXPERT TIP

Picture 2 of How to Check Internet Speed

Luigi Oppido

Computer Repair Technician & Owner, Pleasure Point Computers

Luigi Oppido is the Owner and Operator of Pleasure Point Computers in Santa Cruz, California. Luigi has

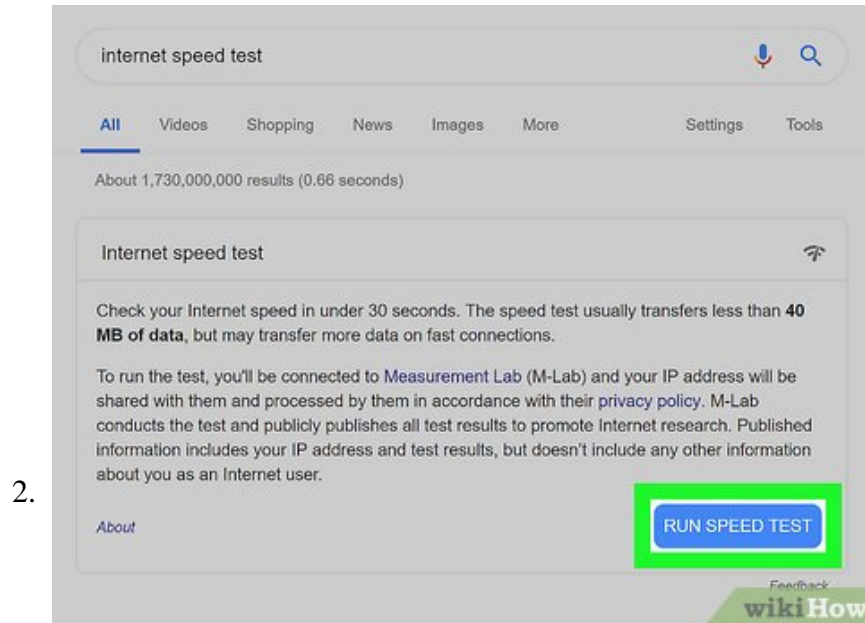
over 25 years of experience in general computer repair, data recovery, virus removal, and upgrades.

Picture 3 of How to Check Internet Speed

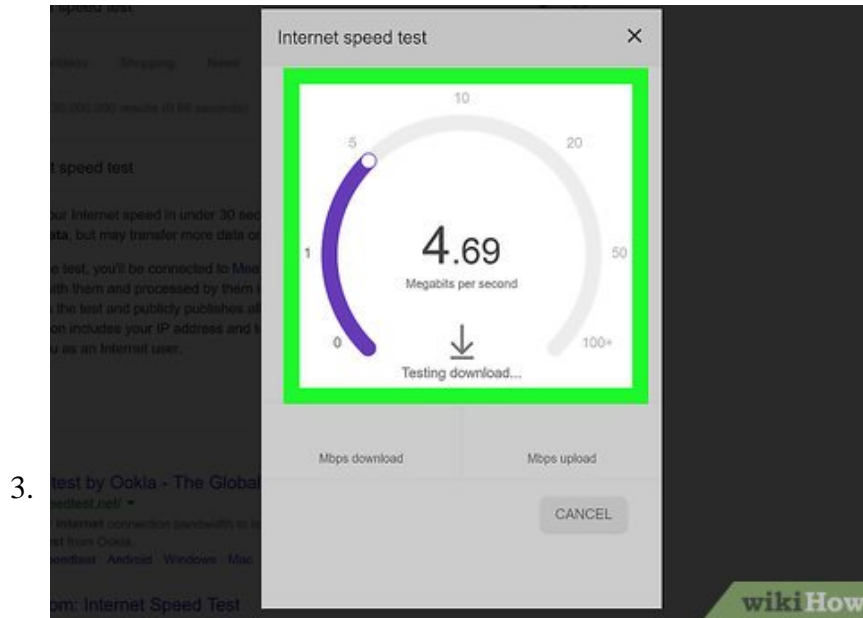
Luigi Oppido

Computer Repair Technician & Owner, Pleasure Point Computers

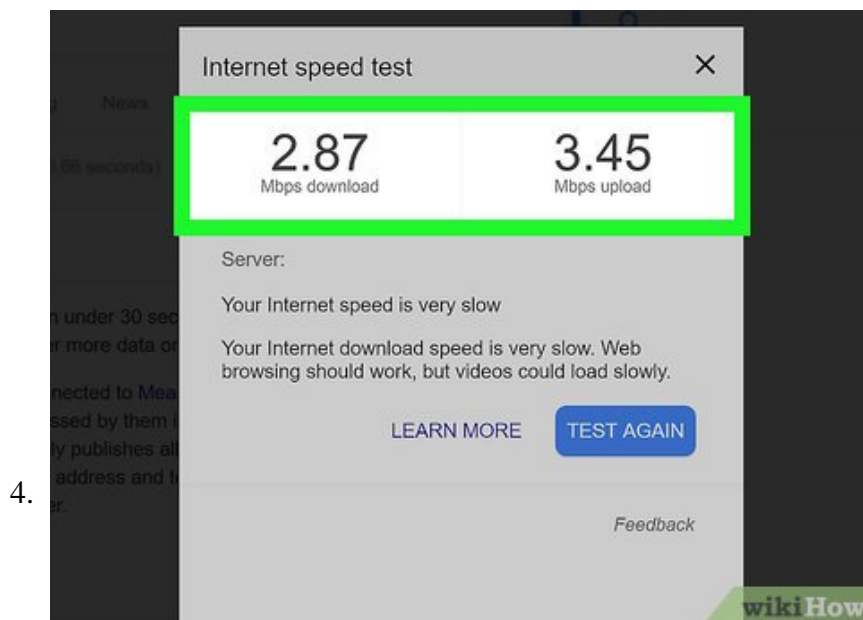
Try this alternative speed test: If you want to know what your general internet speed is when you're using the computer, go to a speed test company like speedtest.net, which is owned by Comcast. For an even more accurate reading, you can use a machine that plugs directly into your modem. However, in most cases, checking through a reliable website is sufficient to give you a good idea of your speed.



Click **RUN SPEED TEST**. It's a blue button in the bottom-right corner of the "Internet speed test" panel.



Wait for the speed test to complete. Google will measure your Internet connection's upload speed, download speed, and latency.

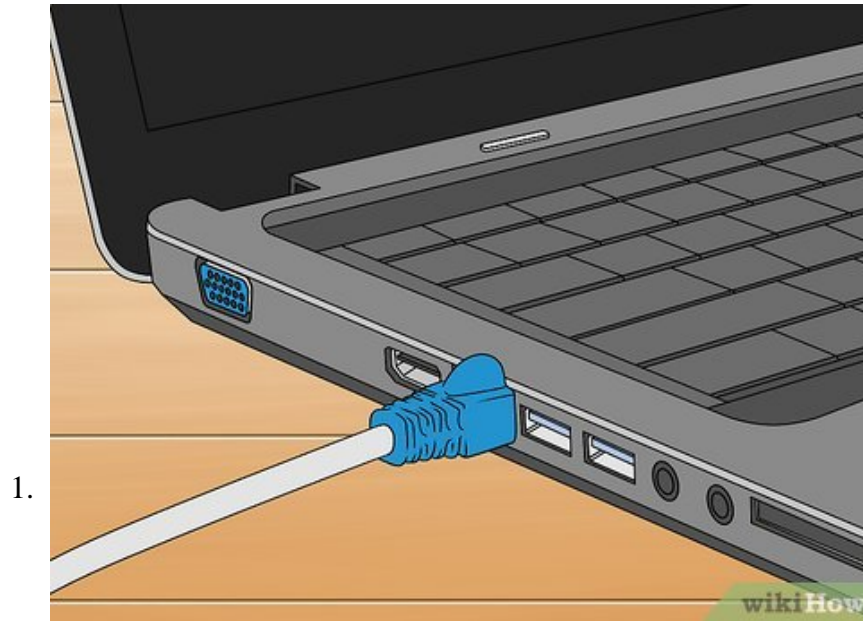


Review the test results. In addition to telling you whether your Internet qualifies as "fast" or "slow", Google measures three aspects of your Internet's speed:

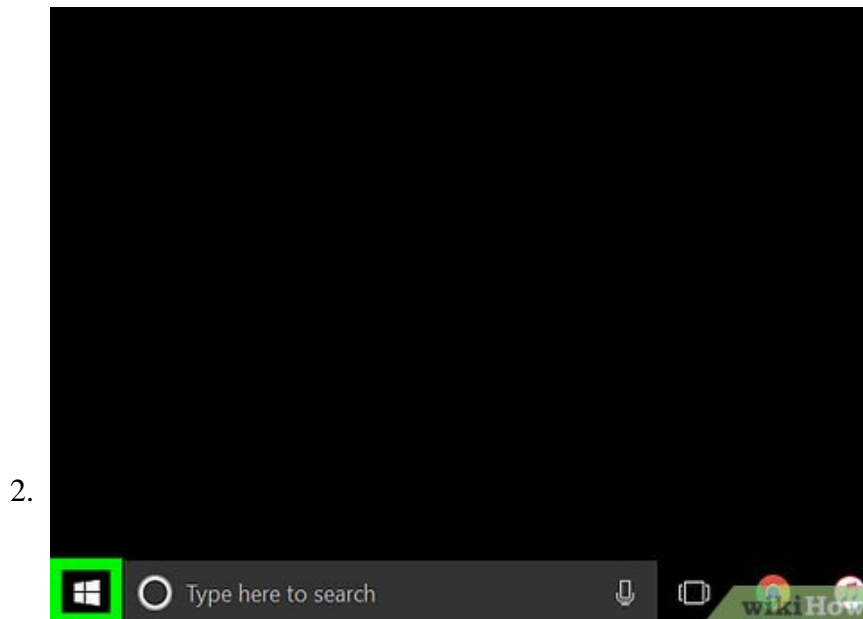
1. **Mbps download** - The number of megabits per second your connection is allowing you to download.
2. **Mbps upload** - The number of megabits per second your connection is uploading.
3. **Latency** - The number of milliseconds it takes for your Internet connection to respond to a command (e.g., a search query or a page loading).

Method 2 of 4:

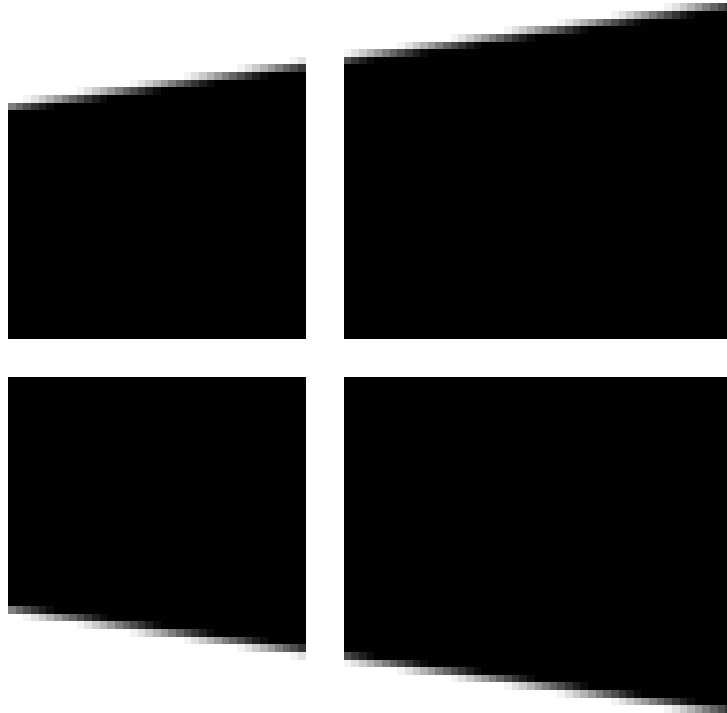
Checking Internet Speed on Windows



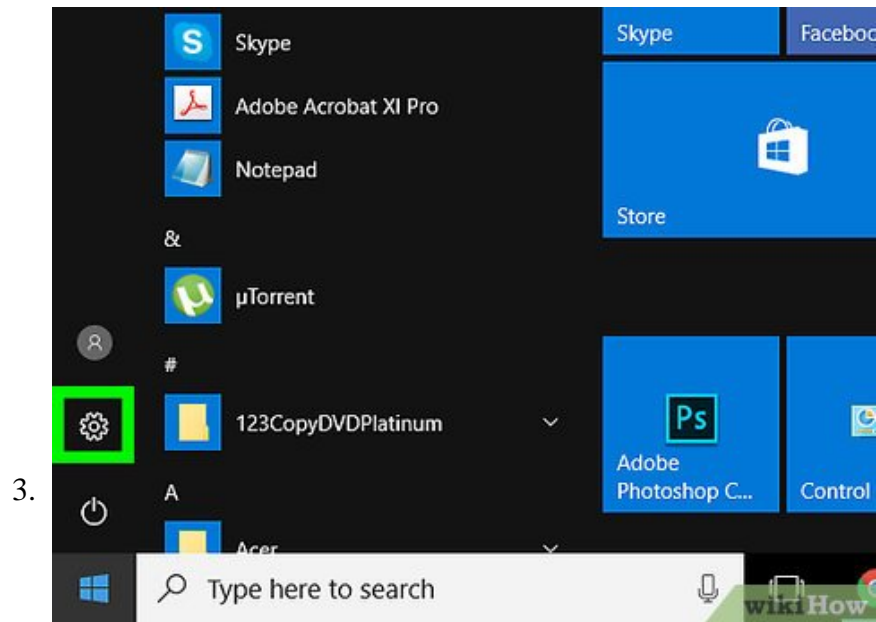
Make sure your computer is connected to your router. To check your Internet speed from your computer's settings, you must connect your computer to your router via Ethernet cable.



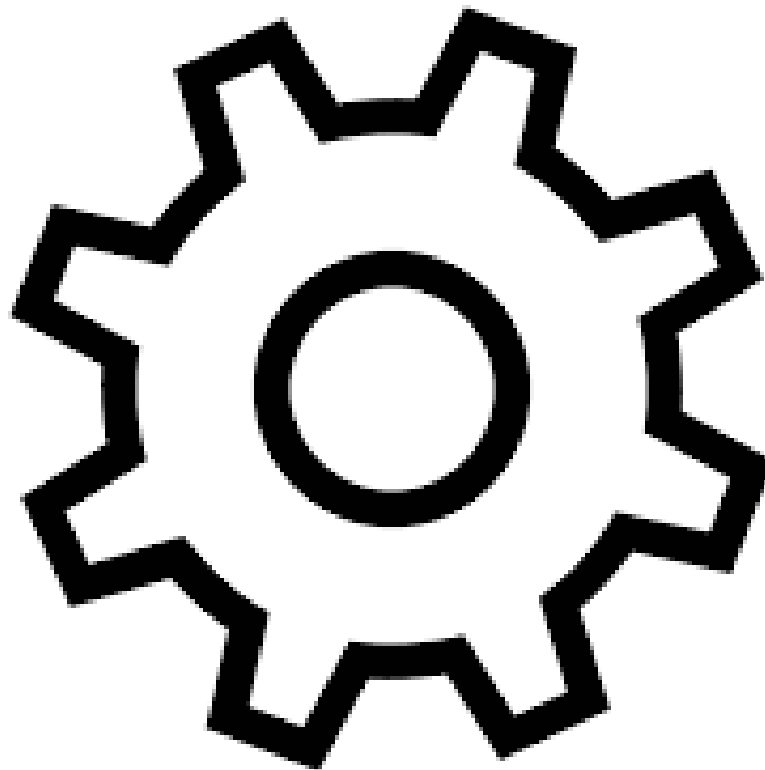
Open Start



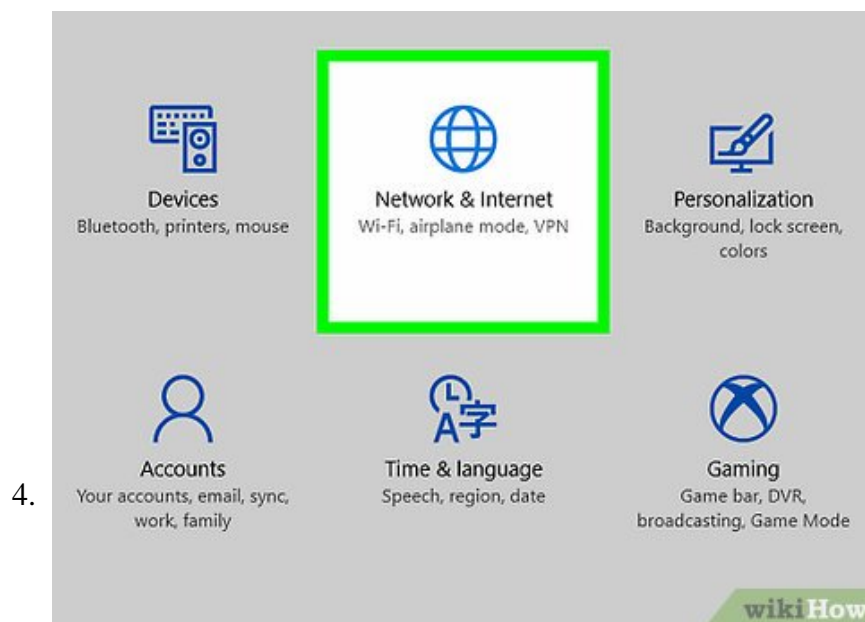
. This icon is in the bottom-left corner of the screen.



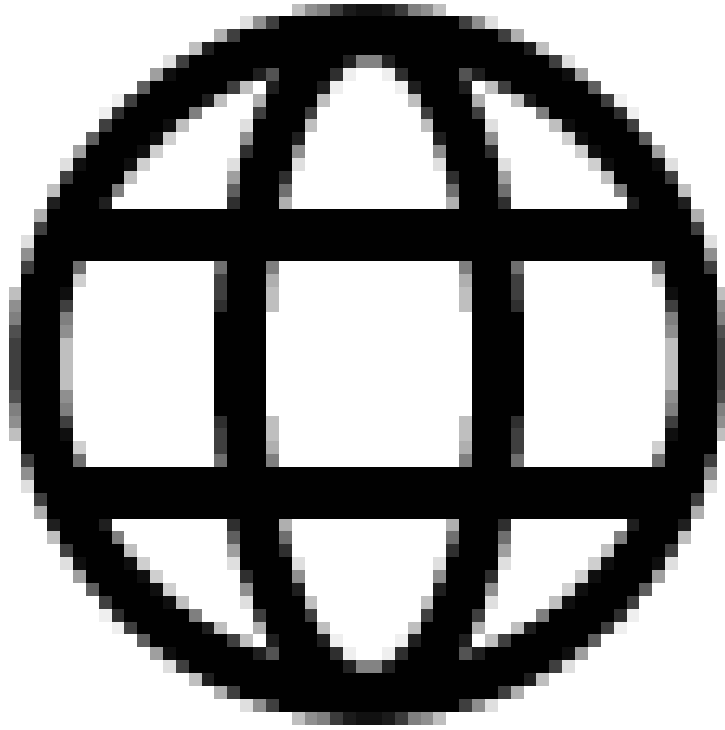
Click



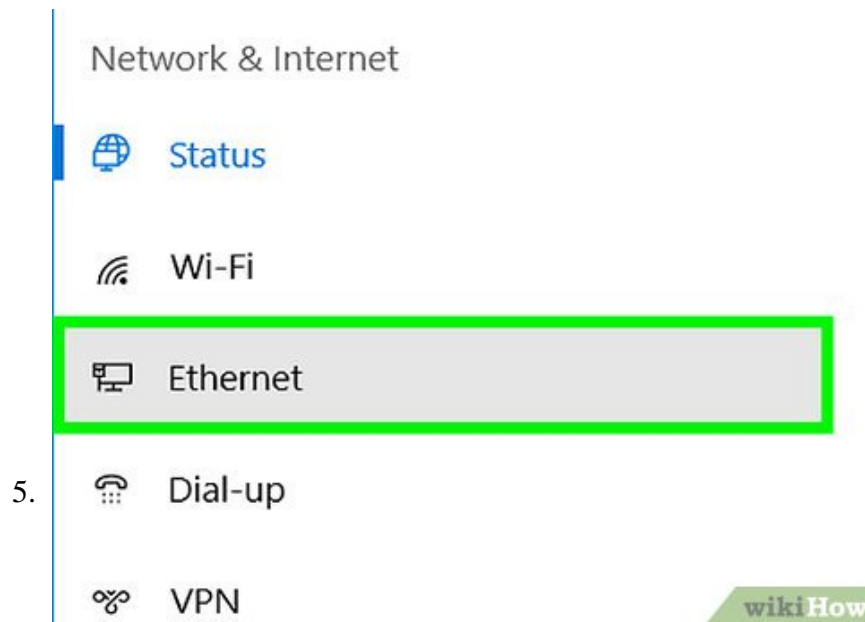
. It's in the bottom-left corner of the Start window.



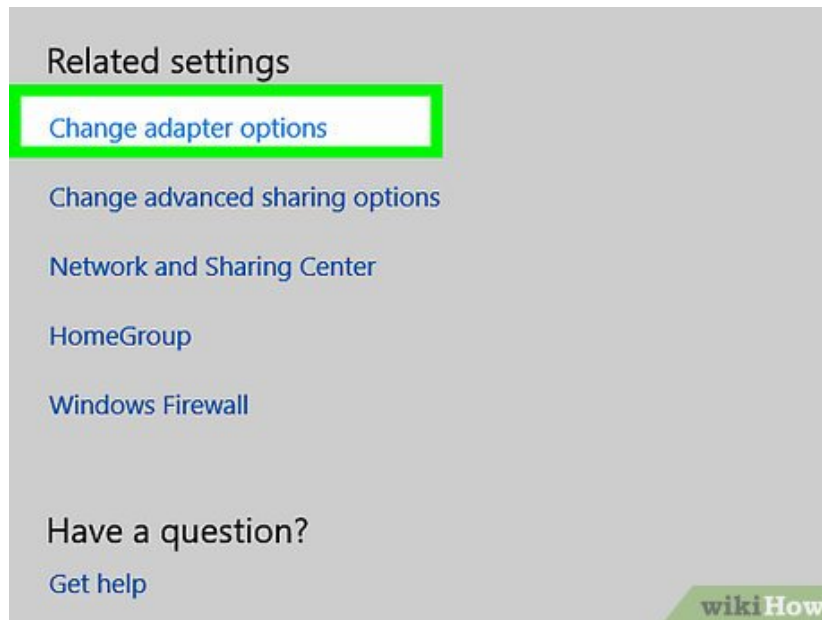
Click



Network & Internet. It's in the top row of settings on the Settings page.



Click **Ethernet**. This tab is on the left side of the window. Doing so will open your Ethernet settings.



6.

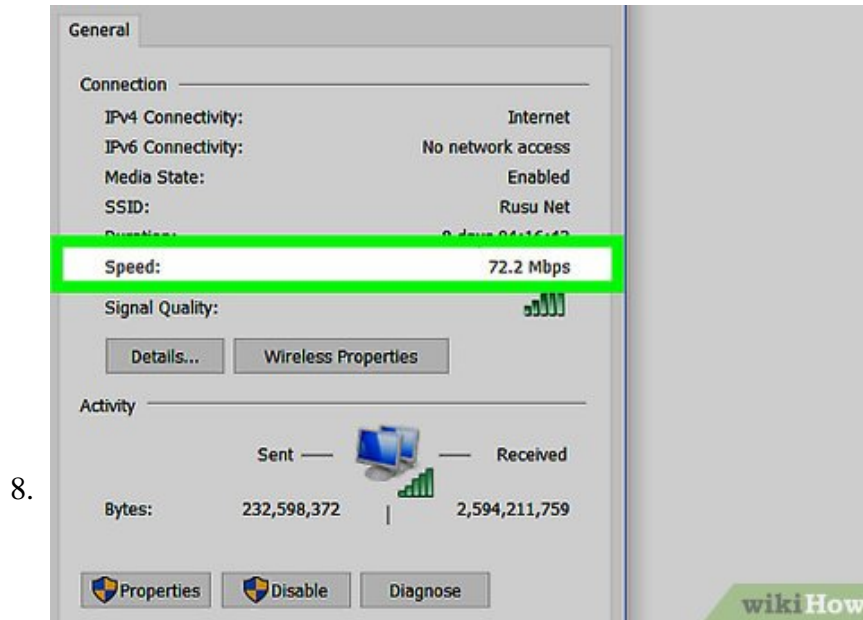
Click **Change adapter options**. It's in the upper-right side of the window.



7.



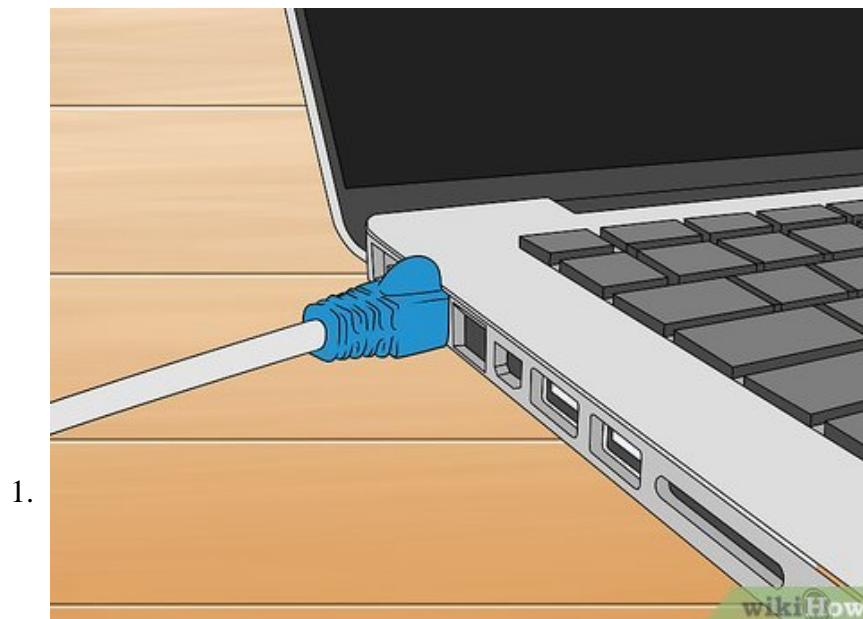
Double-click the Ethernet connection. You'll see this monitor-shaped icon at the top of the Network Connections window.



Review the "Speed" value. It's near the bottom of the "Connections" section of information on the Ethernet Status window. The number here (e.g., "90.0 Mbps") represents the speed of the connection between your computer and the router.

Method 3 of 4:

Checking Internet Speed on Mac



Make sure your computer is connected to your router. To check your Internet speed from your computer's settings, you must connect your computer to your router via Ethernet cable.

2.



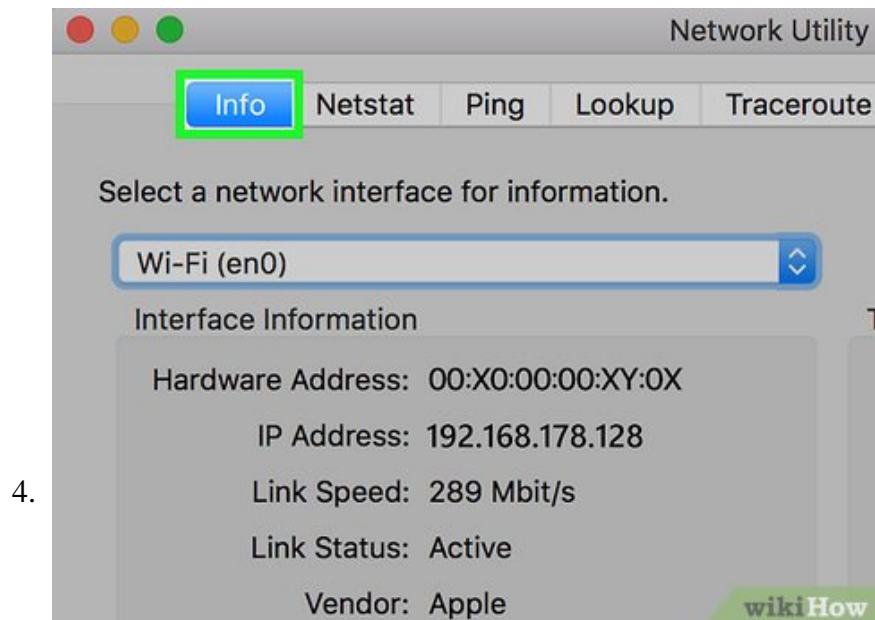
Open Spotlight



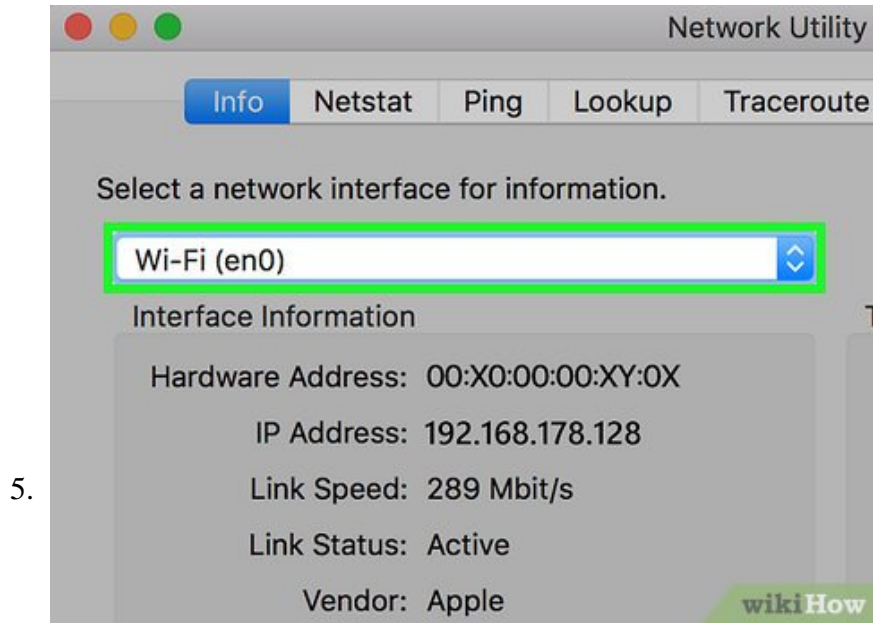
. It's in the top-right corner of your Mac's screen.



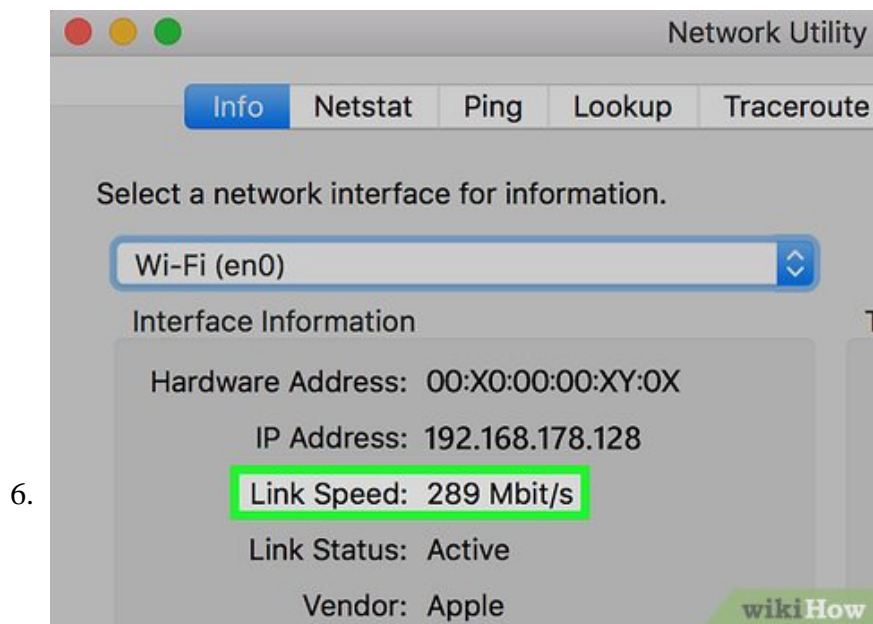
Type "network utility" into Spotlight, then press **Return**. Doing so will open the Network Utility app.



Click the **Info** tab. It's on the far-left side of the top of the Network Utility window.



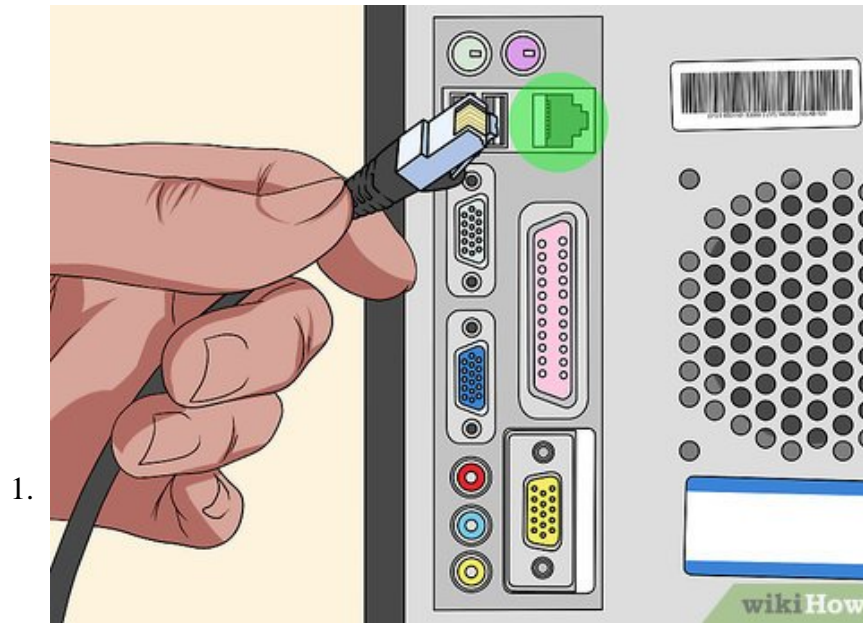
Select your Ethernet connection. Click the box below the "Select a network interface for information" heading, then click your Ethernet connection's name.



Look at the number next to "Link Speed". You'll see something like "100 Mbit/s" here, which would mean the speed of the connection between your computer and your router is 100 megabits of data per second.

Method 4 of 4:

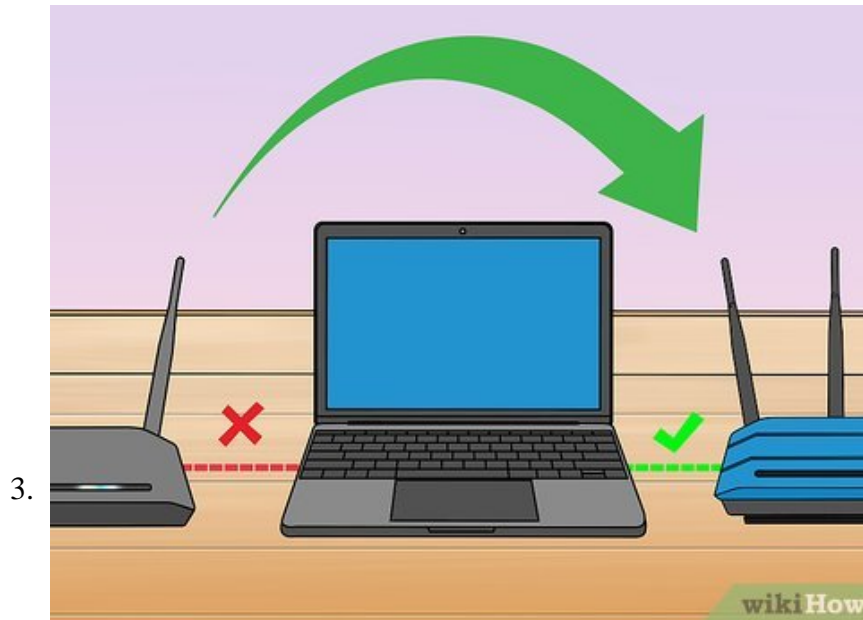
Troubleshooting



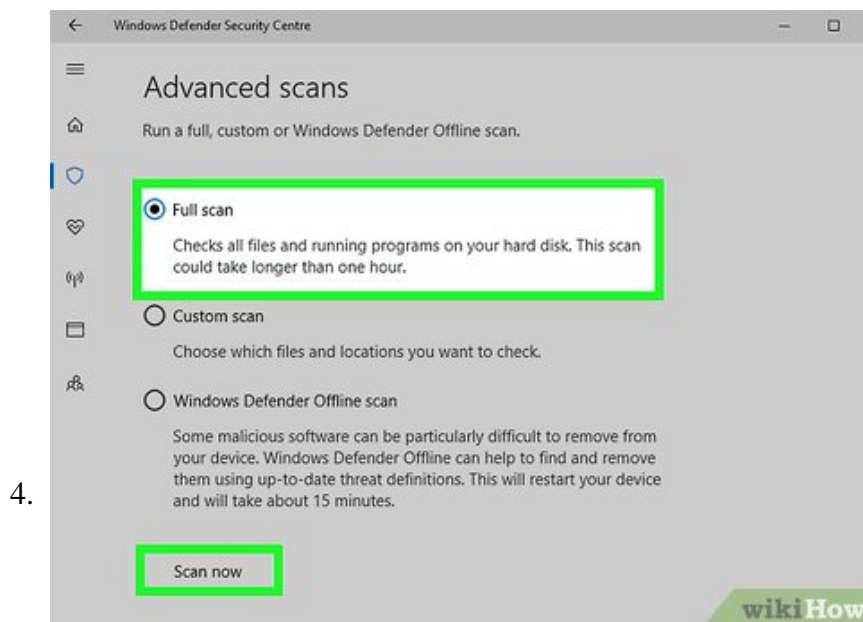
Switch to a wired connection. If your wireless connection is experiencing significant lag, then you may need to connect to a wired connection (usually through Ethernet) in order to boost your Internet performance speed.



Restart your Wi-Fi access point. Sometimes, routers or other devices that can access wi-fi may need to be restarted in order to fix any performance issues caused by a glitch or broken connection.



Connect to another network. In order to check if the problem is a network or just your device, connect to another network you have access to and check that network's Internet speed.



Run a malware scan on your device. In some instances, a slow Internet speed could mean your device is being slowed down by malware in its system. To remedy this, install an antivirus program with a malware scanner included in it.

You finished reading the article "**How to Check Internet Speed**" edited by the [TipsMake](#) team. We hope this article has provided you with many useful tech tips and tricks. You can search for similar articles on tips and guides. Thank you for reading and for following us regularly.