

How to check if your old computer can run Windows 11 24H2 version

Windows 11 is expected to receive two major notable updates this year. The first is the Moment 5 update with some improvements coming in late February or March. This will be followed by a larger feature update, most likely released in the second half of 2024.

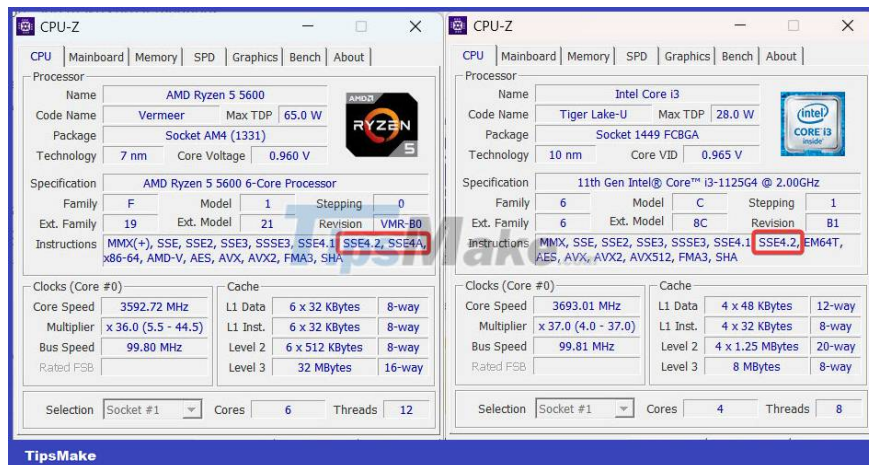
Windows 11 is expected to receive two major notable updates this year. First is the "Moment 5" update with some improvements coming in late February or March. This will be followed by a larger feature update, most likely released in the second half of the year 2024.

Recent Windows 11 preview builds are said to contain a change in the required CPU instruction set, making physically unsupported processors incapable of running Windows 11 edition 24H2, and will cause the operating system to crash when trying to boot. If you own an old one and plan to upgrade to Windows version 1124H2, here's how to check if the system meets the necessary requirements. However, it is also important to note that running modern operating systems on very old processors will likely bring a not really good experience, even if they are supported.

How to check if your computer can run Windows 11 24H2 version

Option 1: Use CPU-Z

CPU-Z is a free software, running on Windows operating system to collect main hardware information of the computer: Detailed information about CPU, mainboard, chipset, memory type, size, timing, SPD, Measure each core's internal frequency and memory frequency in real time. Therefore, CPU-Z can also display information indicating whether your computer can run Windows 11 24H2 version.



First, download CPU-Z from the official CPUID website, run the software and click on Instructions. Look for the SSE4A parameter if you use an AMD processor and SSE4.2 if you use an older Intel chip. If these parameters are displayed, it means the CPU supports Windows 11 24H2 version and vice versa.

Option 2: Check on the web

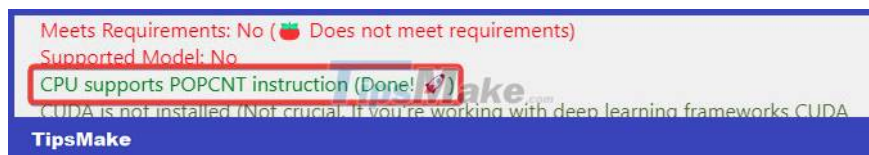
Navigate to Settings > System > About and select "Processor". If you use Intel, go to [THIS](#) website and find the processor model the system is running. Check the "Instruction Set Extension" section and the SSE4.2 parameter is mentioned.



AMD does not provide a dedicated website where you can find the specifications of every chip the company has ever released. Therefore, it is possible to use third-party websites for CPU monitoring, like TechPowerUP. Look for SSE4A in the list of supported parameters or manual extensions.

Option 3: Use a third-party app

The Windows enthusiast community on Github has created a number of applications that can let you check if your computer can run a certain version of the operating system. This open source utility, called WhyNotWinAI, can tell you whether your chip supports the POPCNT instruction or not. You can download it for free from GitHub. Find the line "CPU supports POPCNT instruction".



Hope you are successful.

You finished reading the article "**How to check if your old computer can run Windows 11 24H2 version**" edited by the [TipsMake](#) team. We hope this article has provided you with many useful tech tips and tricks. You can search for similar articles on tips and guides. Thank you for reading and for following us regularly.