

How to check for blue screen errors using BlueScreenView

BlueScreenView is a tool for checking, scanning, and analyzing files during the process of a blue screen error. Using BlueScreenView can help minimize blue screen errors while using your computer. To learn how to use BlueScreenView to check for blue screen errors, please follow the steps below.

The blue screen error on a computer is quite complex, with many causes stemming from various system factors. When this error occurs, the system displays a very confusing message, making it difficult to resolve the blue screen error on the computer.



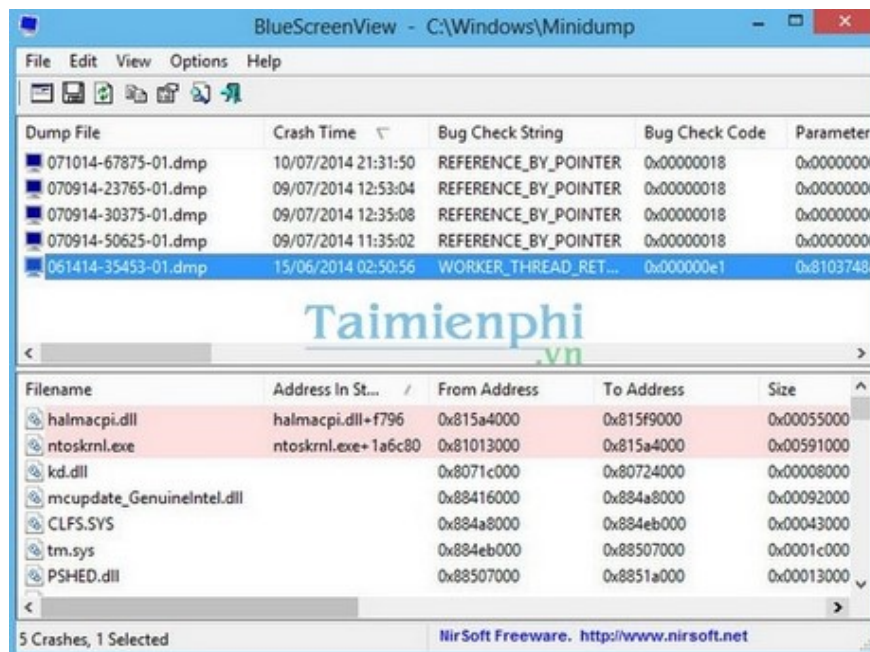
How to check for blue screen errors on Windows 10, 7, and XP

Instructions on how to check for blue screen errors using BlueScreenView

Step 1 : Download the latest version of **BlueScreenView**

The utility can run immediately without needing to be installed on the system.

Step 2 : After the program starts, it will scan all folders and files and display information about the errors that have occurred on the system.

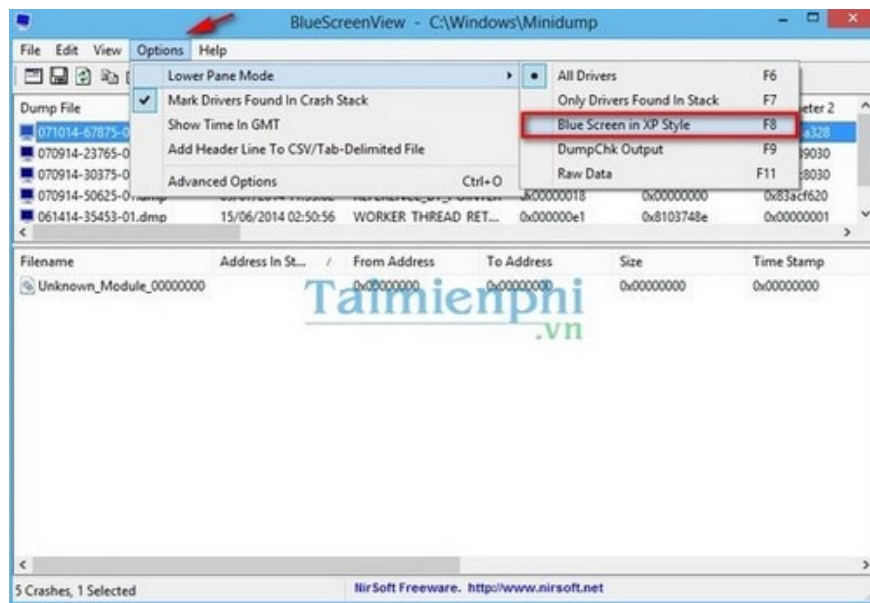


Step 3 : To view detailed information about a specific error that is displayed on the software interface, you can right-click on the error to see the information.

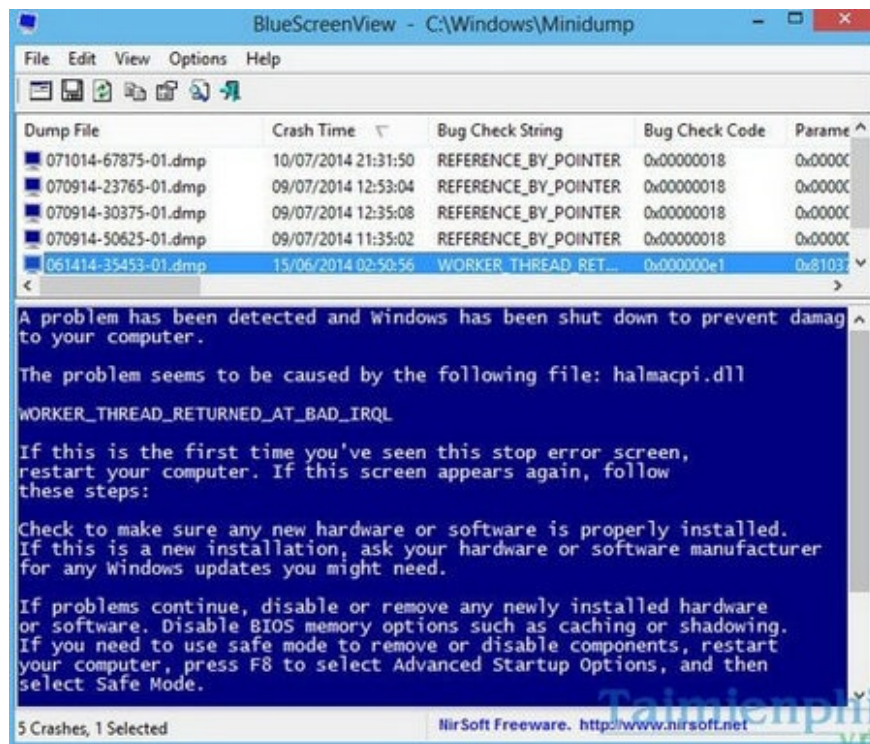
Properties	
Dump File:	061414-35453-01.dmp
Crash Time:	15/06/2014 02:50:56
Bug Check String:	WORKER_THREAD_RETURNED_AT_BAD_IRQL
Bug Check Code:	0x000000e1
Parameter 1:	0x8103748e
Parameter 2:	0x00000001
Parameter 3:	0x85704a28
Parameter 4:	0x85704a28
Caused By Driver:	halmacpi.dll
Caused By Address:	halmacpi.dll+f796
File Description:	Hardware Abstraction Layer DLL
Product Name:	Microsoft® Windows® Operating System
Company:	Microsoft Corporation
File Version:	6.2.9200.16442 (win8_gdr.121023-1503)
Processor:	32-bit
Crash Address:	ntoskrnl.exe+e0a94
Stack Address 1:	ntoskrnl.exe+56499
Stack Address 2:	
Stack Address 3:	
Computer Name:	
Full Path:	C:\Windows\Minidump\061414-35453-01.dmp
Processors Count:	2
Major Version:	15
Minor Version:	9200
Dump File Size:	153.488
Dump File Time:	15/06/2014 02:52:57

OK

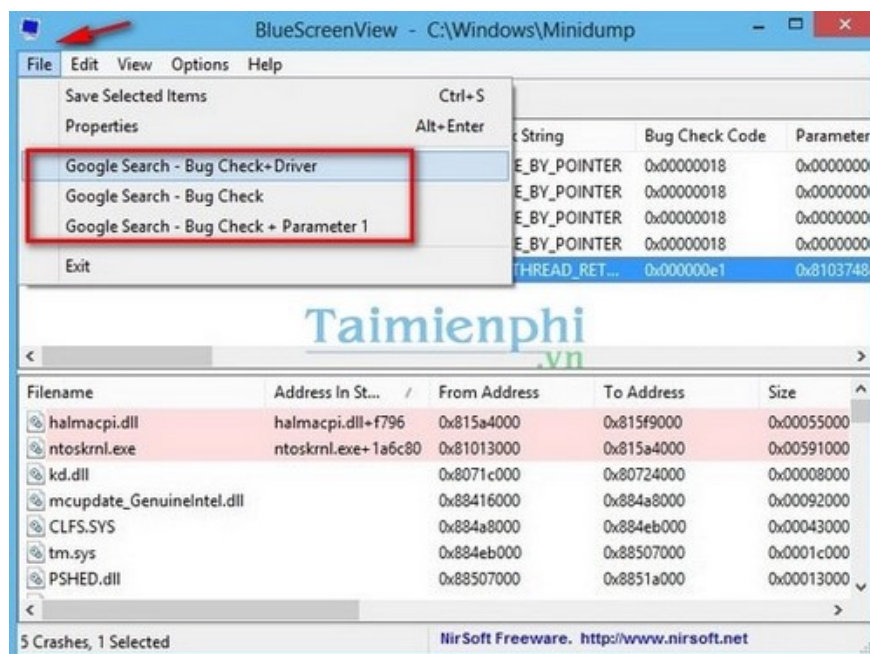
Step 4 : To view the error more visually, you can go to **Options** --> select **Lower Pane Mode** --> then select **Blue Screen in XP Style** or press the F8 key.



Then, a blue screen interface appears right below each error when you left-click on the error above.



Step 5 : To better understand blue screen errors, this tool also provides a Google search option. To use it, click on one of the dump files, then open the **File** menu --> select one of the three search methods: **Google Search – Bug Check+Driver** , **Google Search – Bug Check** , and **Google Search – Bug Check+Parameter 1**. This will automatically search Google for the cause of the error and how to fix it.



Above is a complete guide on how to use BlueScreenView software to check for blue screen errors. You can apply this method when encountering problems and find ways to fix them.

You finished reading the article "**How to check for blue screen errors using BlueScreenView**" edited by the [TipsMake](#) team. We hope this article has provided you with many useful tech tips and tricks. You can search for similar articles on tips and guides. Thank you for reading and for following us regularly.