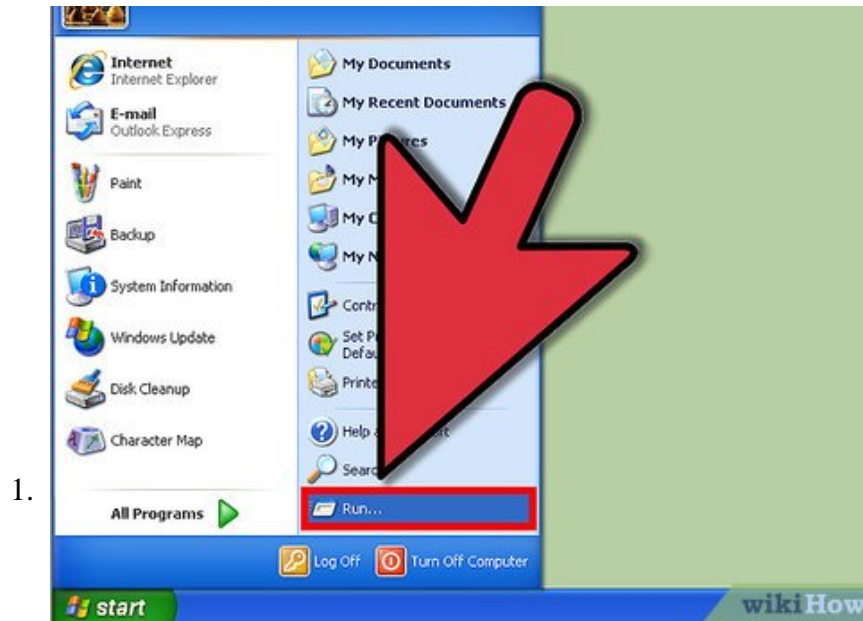


How to Check BIOS Version

A computer's BIOS is the firmware interface between a computer's hardware and its operating system. Like any software, the BIOS can be updated. Knowing your computer's BIOS version can tell you if you have the most up-to-date version of...

Method 1 of 4:

Finding the BIOS Version on Windows Computers Using the Command Prompt



Click the Start menu, and then click Run.

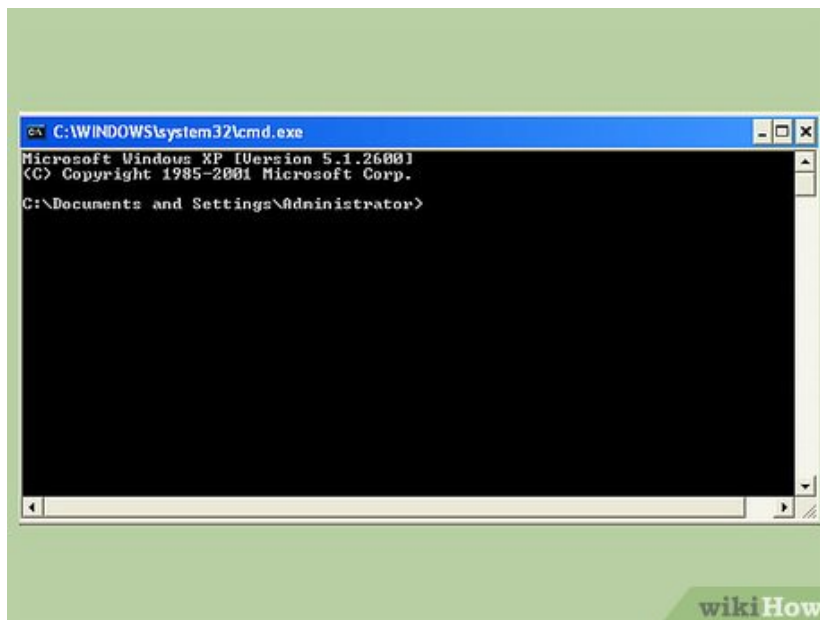
1. In Windows 8, right-click the Start menu, and then click Run. You can also access this menu by pressing the **WIN** + **X** keys.^[1]

2.



In the Run dialog box, type `cmd`.

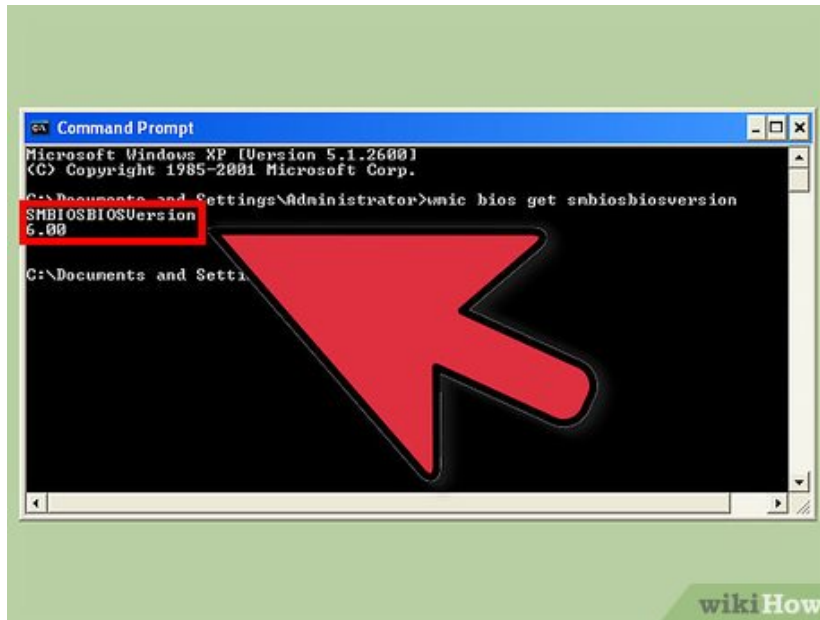
3.



The Command Prompt window opens.

1. The Command Prompt is a program that lets you control your computer with text commands.
2. Type `wmic bios get smbiosbiosversion`. The string of letters and numbers following SMBIOSBIOSVersion is your BIOS version.^[2]

4.

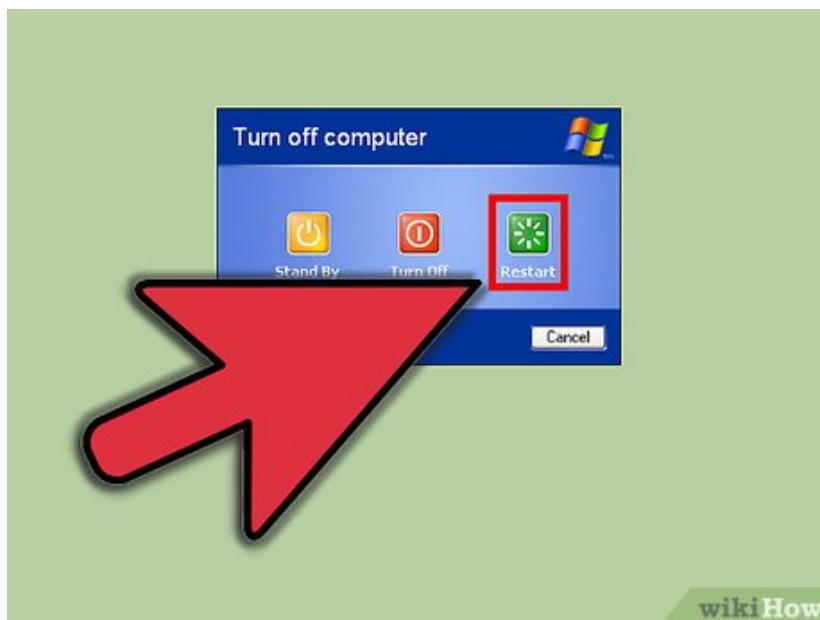


Write down the BIOS version number.

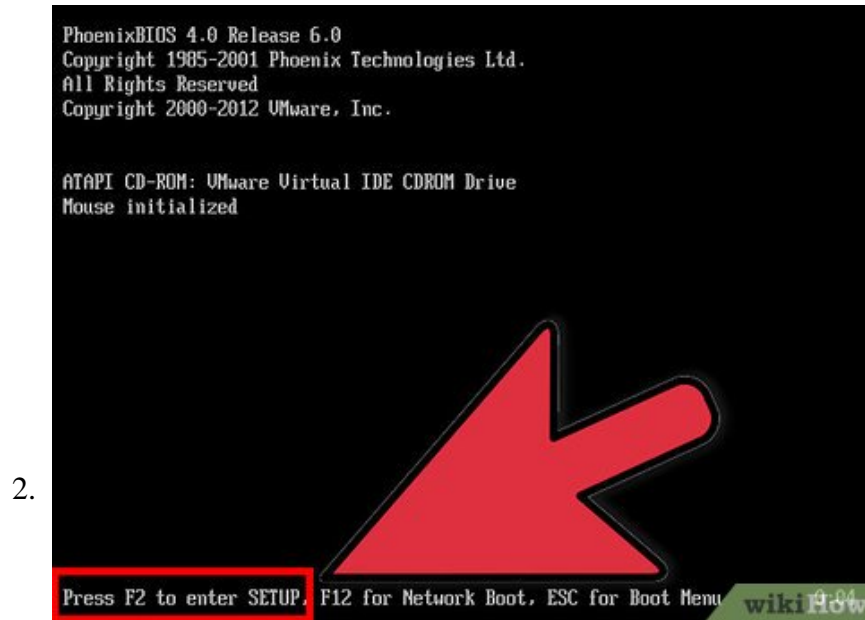
Method 2 of 4:

Finding the BIOS Version on Windows Computers Using the BIOS Menu

1.

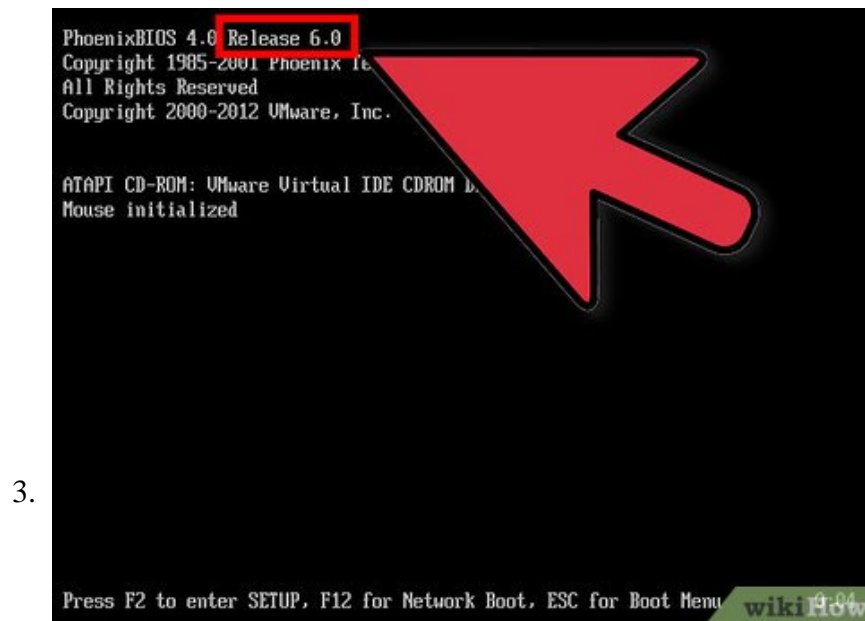


Reboot your computer.



Open the BIOS menu. As the computer reboots, press F2, F10, F12, or Del to enter your computer BIOS menu.^[3]

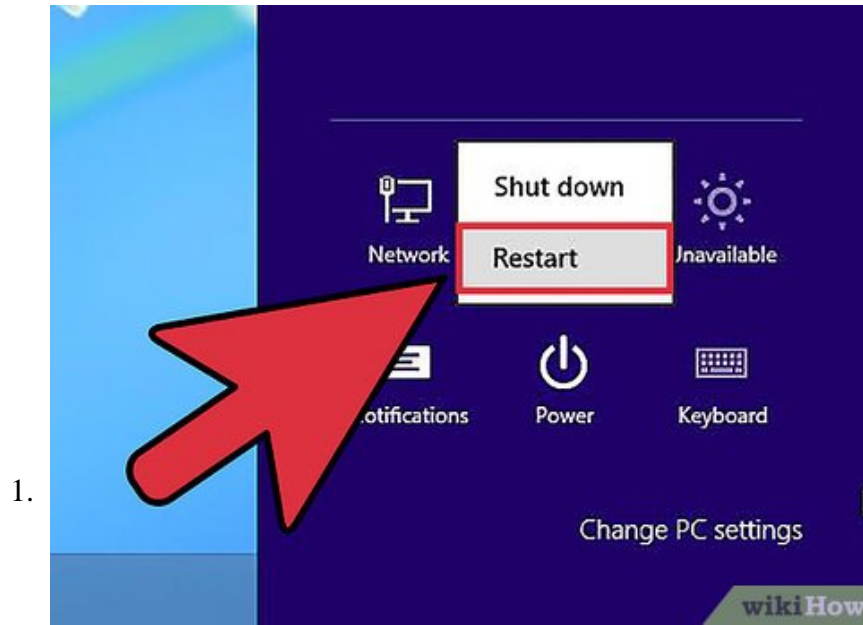
1. You may need to press the key repeatedly, as boot times for some computers can be very quick.
2. Find the BIOS version. In the BIOS menu, look for text that says BIOS Revision, BIOS Version, or Firmware Version.



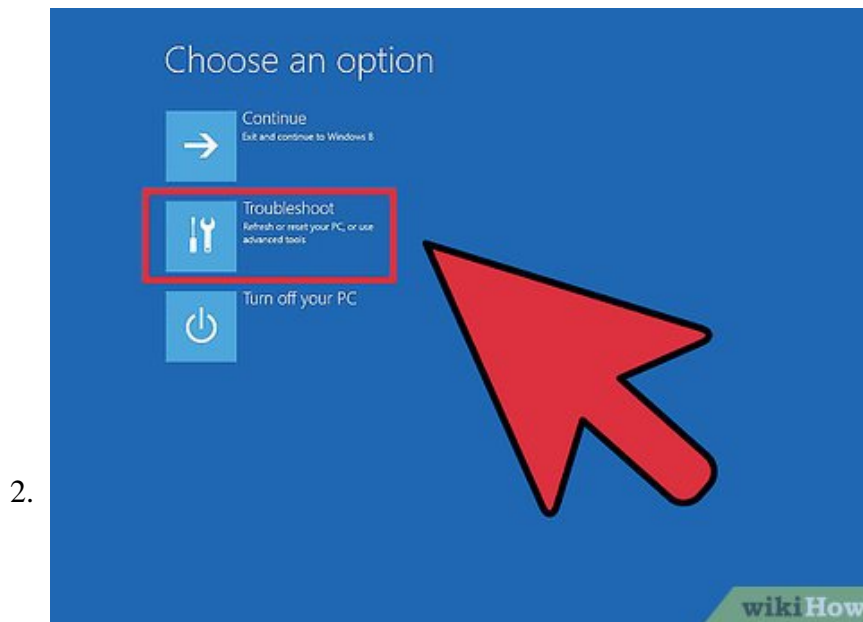
Write down the BIOS version number.

Method 3 of 4:

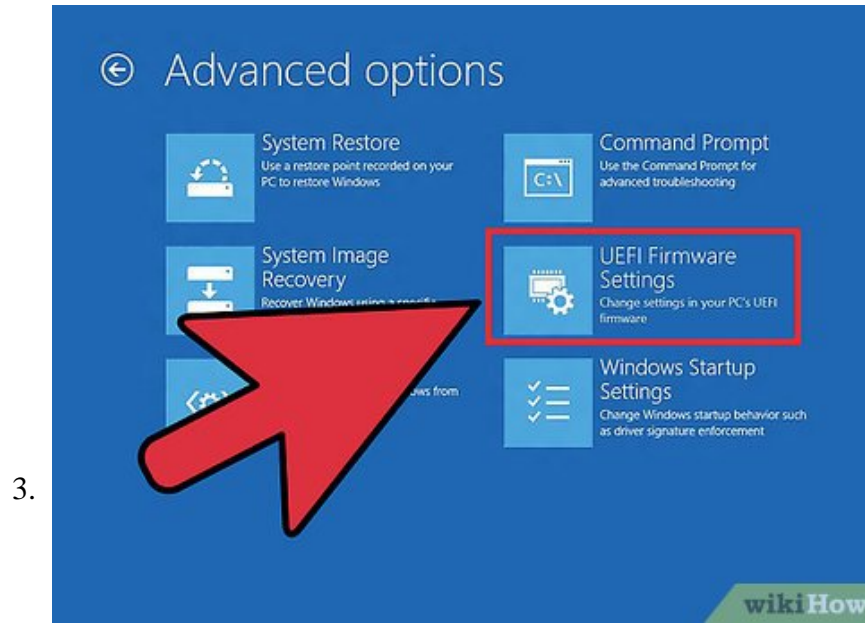
Finding the BIOS Version on a Pre-Installed Windows 8 Computer



Restart your computer. While the computer reboots, press and hold the **Shift** button until you see the boot options menu.

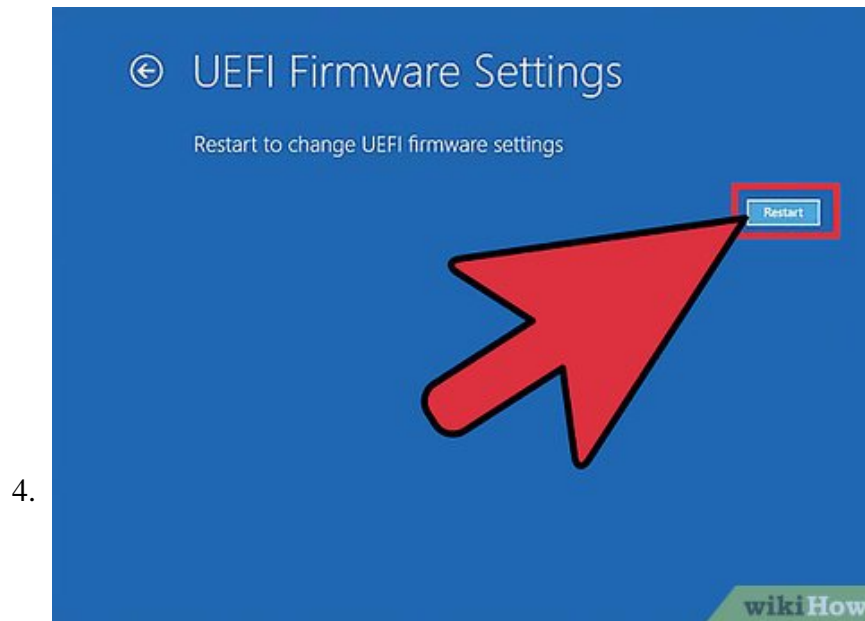


Open the Troubleshoot menu. On the boot options screen, click Troubleshoot.



Open UEFI Firmware Settings. On the Advanced options screen, click UEFI Firmware Settings.

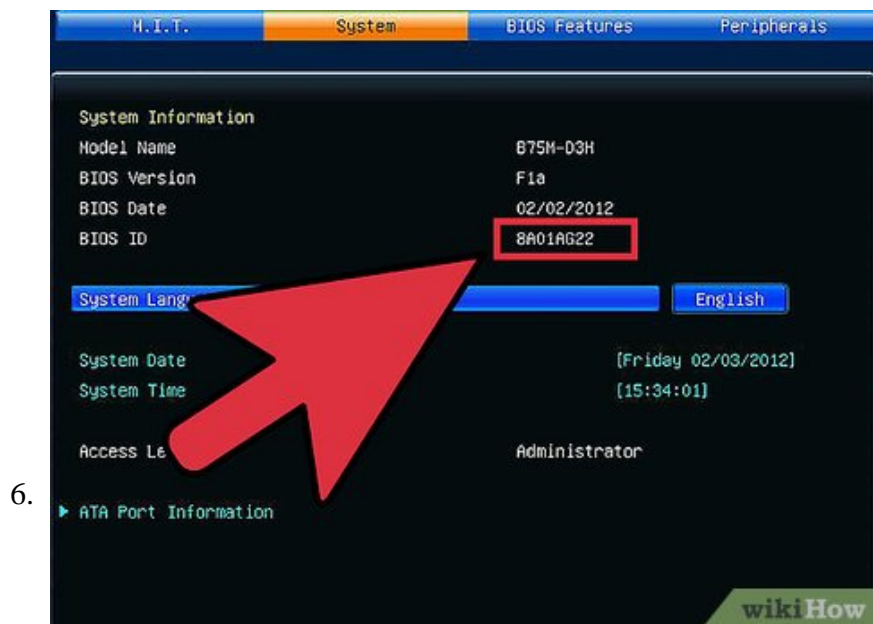
1. If you don't see UEFI Firmware Settings, your computer didn't have Windows 8 pre-installed, and you'll need to get the BIOS version via the command prompt or the BIOS menu.



Click Restart. The computer reboots into the UEFI firmware settings screen.



Look for the UEFI version. Depending on your computer hardware, you'll see different information. The UEFI version will usually be under the Main or starting tab.

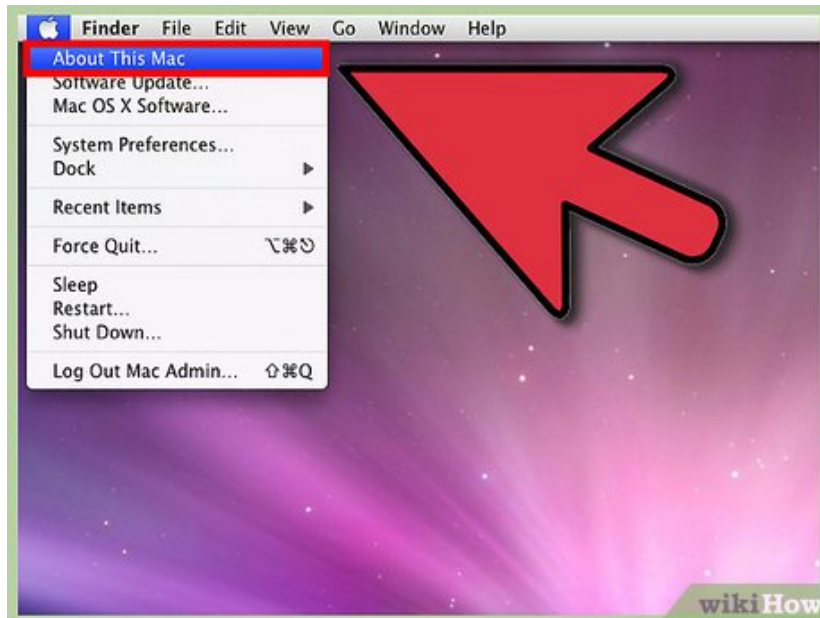


Write down the UEFI number.

Method 4 of 4:

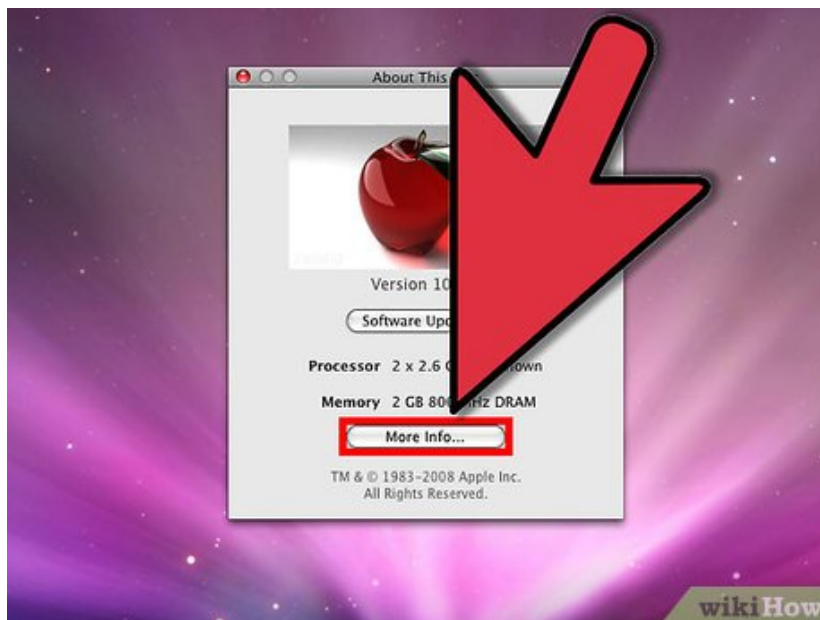
Finding the Firmware Version on a Mac

1.

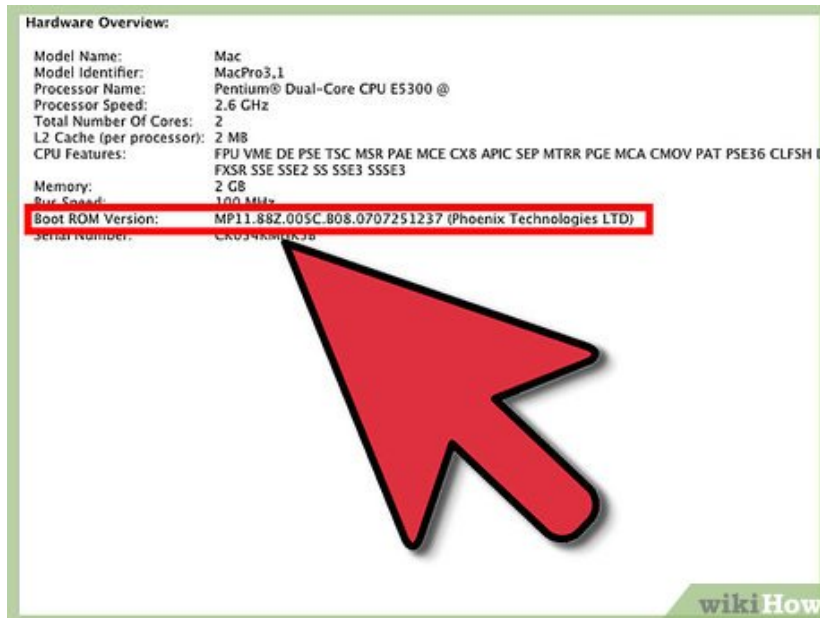


Open About This Mac. Click the Apple menu, and then click About This Mac.

2.



Get the Mac system report. Click More Info, and then click System Report.



Get the Boot ROM Version and the SMC Version. Under Hardware Overview, write down the Boot ROM Version and SMC Version (system).^[4]

1. The Boot Rom Version is the software that controls the Mac booting process.^[5]
2. The SMC Version is the software that controls the power management on the Mac, such as when it goes to sleep.^[6]

You finished reading the article "**How to Check BIOS Version**" edited by the [TipsMake](#) team. We hope this article has provided you with many useful tech tips and tricks. You can search for similar articles on tips and guides. Thank you for reading and for following us regularly.