

How to check a computer using UEFI or BIOS

For longtime computer users who might hear UEFI and BIOS together but we don't understand what BIOS and UEFI are? Please follow the article below and find out what is UEFI and BIOS and how to check your computer using UEFI or BIOS.

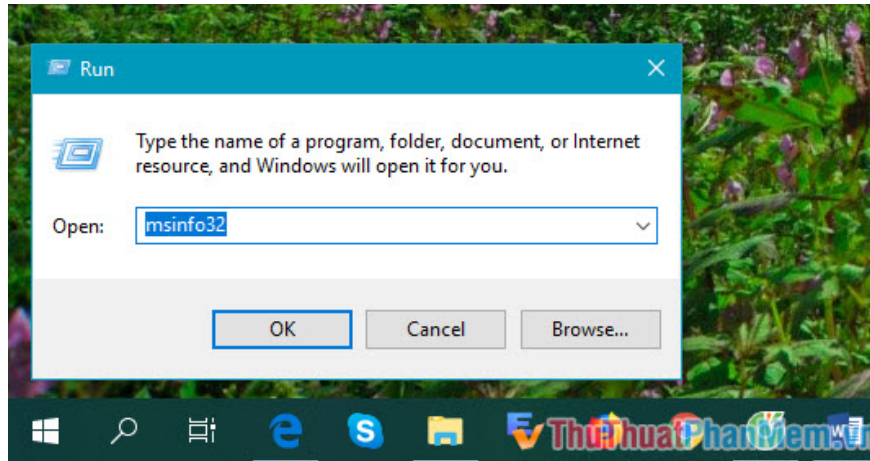
For longtime computer users who might hear UEFI and BIOS together but we don't understand what BIOS and UEFI are? Please follow the article below and find out what is UEFI and BIOS and how to check your computer using UEFI or BIOS.



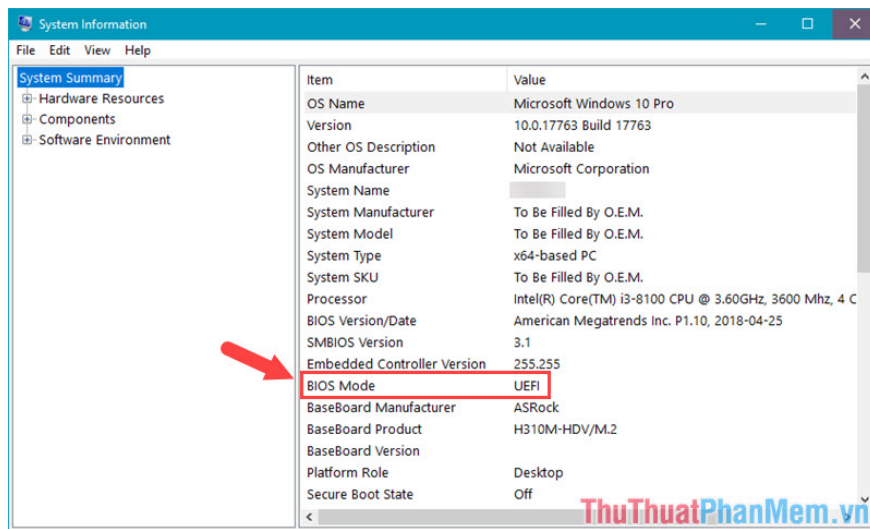
Basically, UEFI and BIOS are a form of low-level software integrated on the motherboard (mainboard) of the computer. The UEFI standard was born after the BIOS standard, so it has advantages and powerful hardware support and overclocking capability. To check if your computer supports UEFI or BIOS, you can check by the following.

Method 1: Check the computer using UEFI or BIOS with System Information

Step 1: You press **Windows + R** key combination to open the **Run** dialog box . Then you enter the command **msinfo32** and **OK** .



Step 2: Notice that the information in **BIOS mode** series is UEFI or BIOS standard. As shown below, the computer uses the **UEFI** standard .

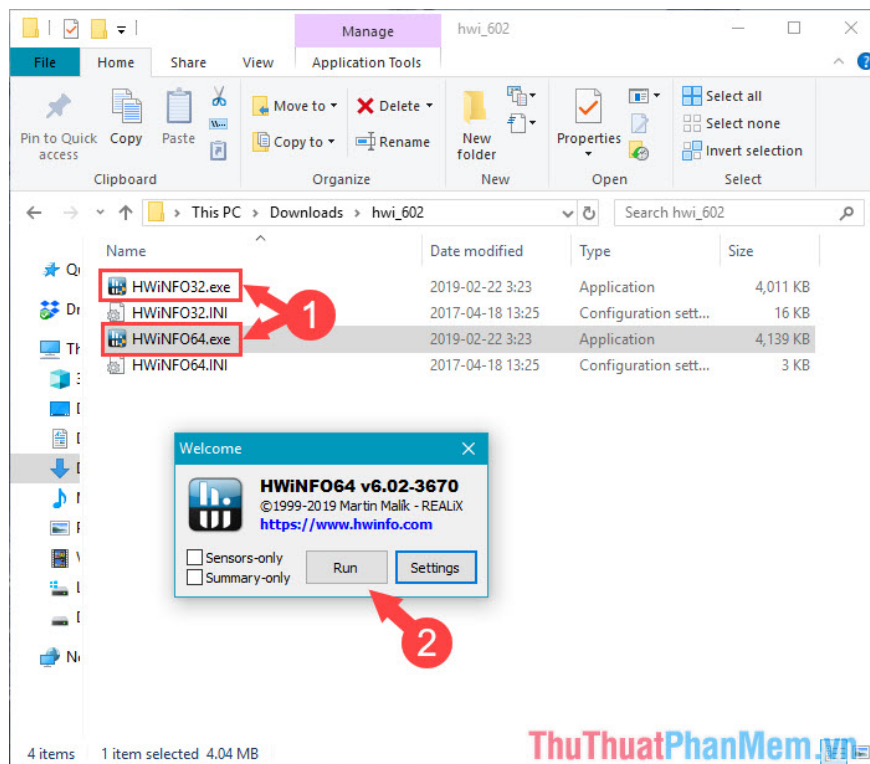


Method 2: Check your computer using UEFI or BIOS with HWinfo software

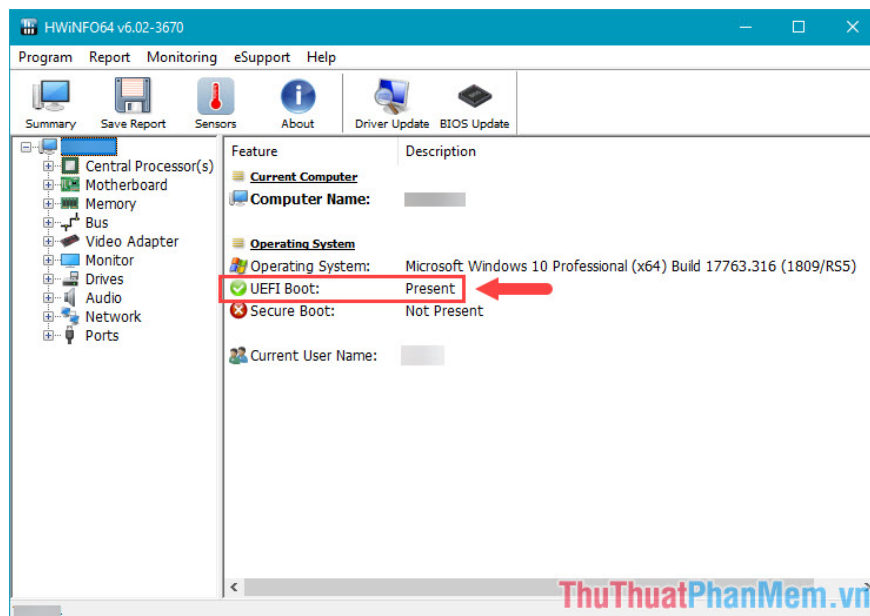
You can download HWinfo here:

<https://www.hwinfo.com/download/>

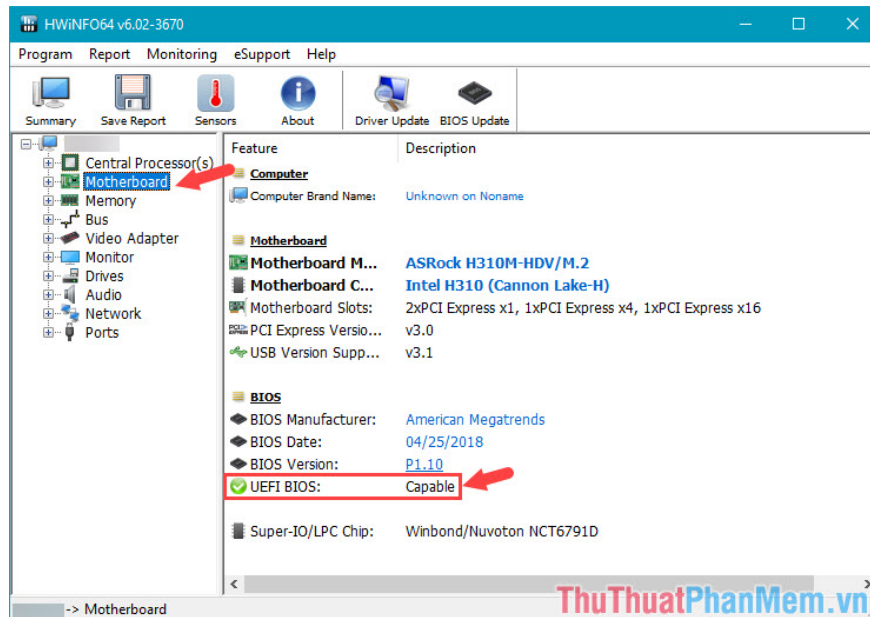
Step 1: After downloading **HWinfo** , open the **32bit** or **64bit** version of your Windows version. Then click **Run** to let the software do the analysis for you.



Step 2: After system analysis, you look into the **UEFI Boot** has the word **Present** beside ie your computer is standard support **UEFI** , even if appearing letters **Not Present** means that your machine supports only the standard **BIOS** that come on.



To be sure, you go to Mainboard to see information. Have you noticed the **UEFI BIOS** line if the **Capable** word means your mainboard supports **UEFI** , if the word **Not Capable** means your mainboard only supports **Legacy (BIOS)** only.



With 2 basic tests in the article, you can check that your mainboard is BIOS or UEFI standard. Like the GPT and MBR on hard drives, the MBR standard on hard drives usually comes with the BIOS standard on the motherboard and the GPT standard on the hard drive comes with the UEFI standard. If the article is good and useful, please post your comments and reviews about the article in the comment section below!

You finished reading the article "**How to check a computer using UEFI or BIOS**" edited by the [TipsMake](#) team. We hope this article has provided you with many useful tech tips and tricks. You can search for similar articles on tips and guides. Thank you for reading and for following us regularly.