

# How to change your Viettel WiFi password, change your Viettel WiFi password at home using your phone or computer.

Changing your Viettel WiFi password is essential for securing your personal WiFi and ensuring a stable internet connection.

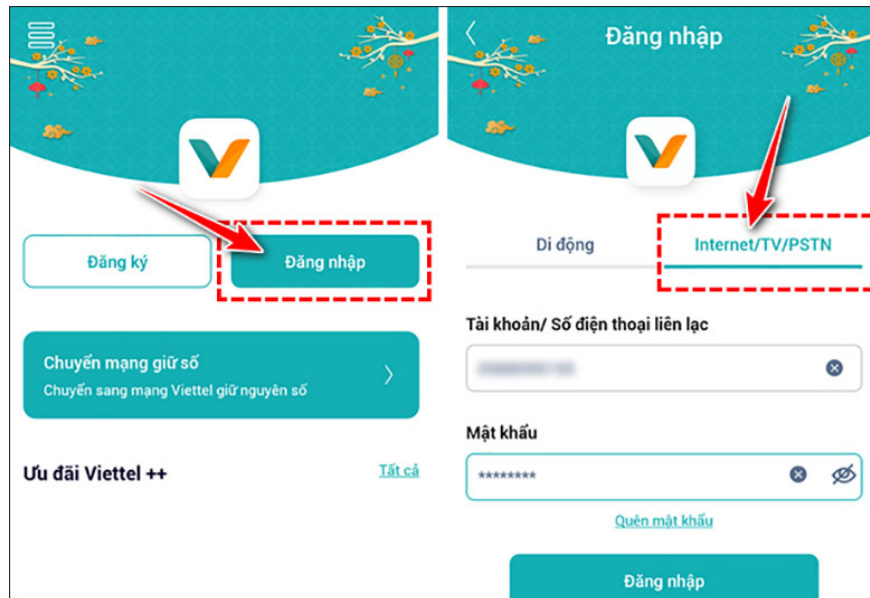
One day, you might discover that several neighbors are using your WiFi without your permission. This significantly impacts your internet speed as the number of "free WiFi" users increases. The best way to limit this is to change your WiFi password . In this article, we will guide you on how to change your Viettel modem WiFi password.

Depending on the modem you're using, the method for changing your Viettel Wi-Fi password will vary. Below, I'll guide you on how to change your Viettel Wi-Fi password on the ZTE F670Y modem (the one Viettel provides for free when you register for Viettel Internet) and on the older H640W modem.

## Change your Wifi password on My Viettel.

### Step 1:

Users update the My Viettel app, then tap Login, and select Internet/TV/PSTN. For instructions on registering a My Viettel account, please refer to the article " How to use My Viettel to manage telecommunications charges ".



## Step 2:

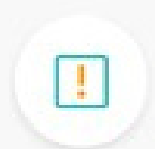
Next, **select the internet contract** you have signed up for with your service provider by clicking **the dropdown arrow icon** located below your account name.



Blurred overlay card with a teal bar at the bottom containing a person icon and the text "Thêm tài khoản" (Add account).

**Tiện ích** Tất cả

-   
Thanh toán cước
-   
Đóng cước trước
-   
Góp nhóm gia đình
-   
Quản lý modem Wifi



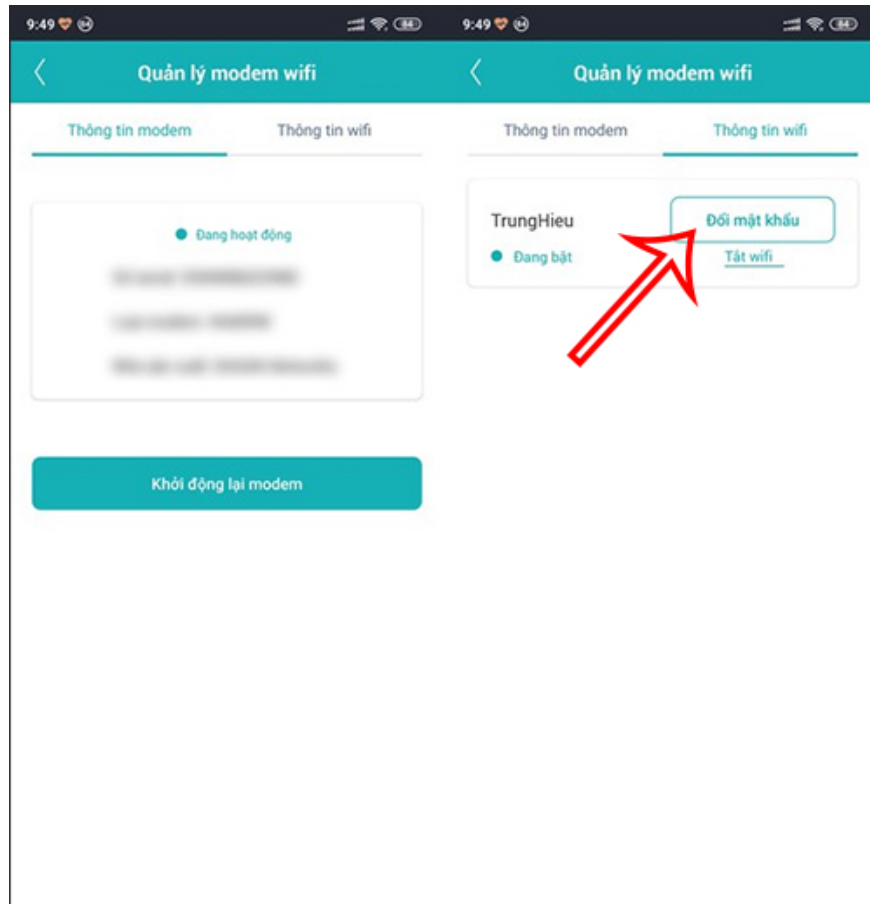
Hỗ trợ dịch vụ

**Ưu đãi Viettel ++** Tất cả



### Step 3:

Continue by tapping on the **"Manage Wi-Fi Modem"** option and wait for the application to display the device information. Then, tap on **"Change Password"** and proceed to change your Viettel WiFi password.



## Change Viettel Wifi password on ZTE F670Y modem

To change your Viettel Wi-Fi password on this modem, follow these steps:

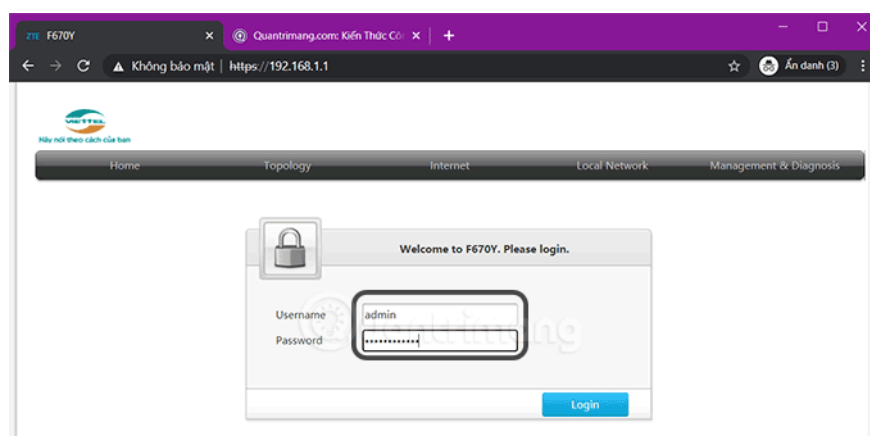
**Step 1:** Turn the modem over and take a picture of the back of the modem. You will have the following important information:

1. Username: admin
2. Password: approximately 12 characters (not the default Wi-Fi password)
3. Management IP address: The IP range used to manage the modem.

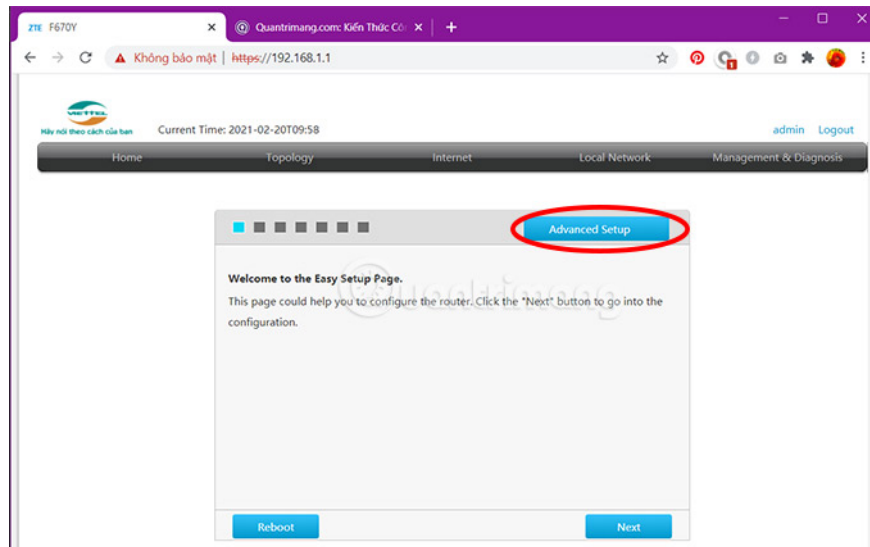


**Step 2:** Access the modem's management IP address (in this example, 192.168.1.1) using a web browser.

**Step 3:** Enter the username and password you saw in Step 1. If you receive an incorrect username and password message at this step, it means they have been changed. You need to enter the username and password you changed. If you are not the one who changed them, you need to contact the Viettel hotline at 18008119 for assistance.



**Step 4:** Click on **Advanced setup** to enter the main setup interface.



**Step 5:** In the modem management interface, click on the **Local Network** tab on the right-hand side.

**Step 6:** Click on **WLAN** in the left column, then click on the **WLAN Basic** tab .

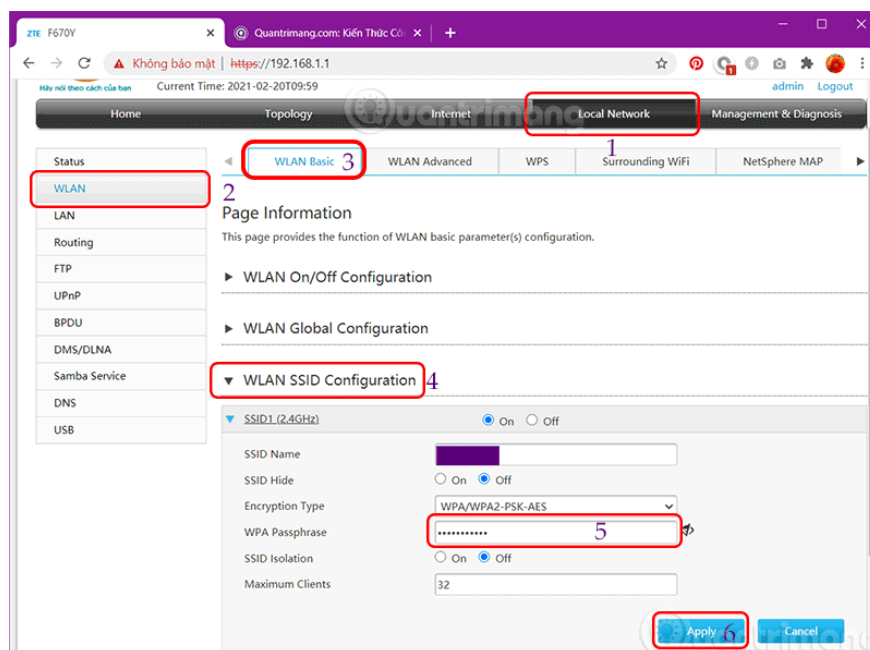
**Step 7:** Scroll down and click on **WLAN SSID Configuration**.

**Step 8:** Find **WPA Passphrase** and click the eye icon to see the current Wi-Fi password.

**Step 9:** Enter the new Wi-Fi password you want to change to. The password needs to meet the following requirements to be considered strong:

1. There are at least 8 characters.
2. This includes numbers, letters, and special symbols.
3. There is no connection to the username, such as being the same or written in reverse.

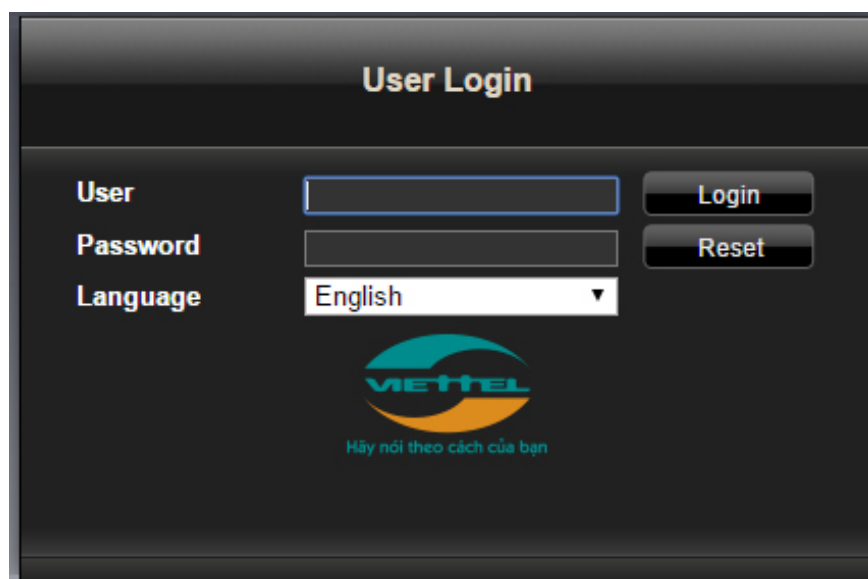
**Step 10:** Click **Apply** to apply the new password and close the modem management window.



## Change your Wi-Fi password on a different Viettel modem.

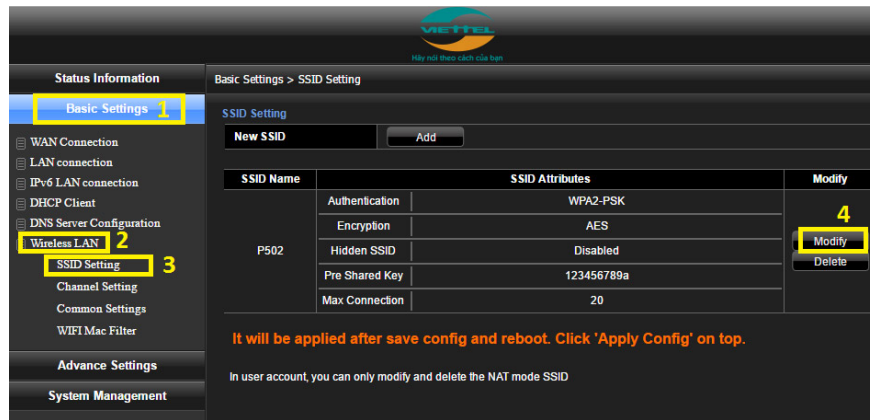
### Step 1:

First, we will access the Viettel WiFi modem's administration page. On the website interface, we will enter the IP address **192.168.1.100:8080** . When the interface shown below appears, enter "**admin**" in the **Username** field and "**admin**" in the **Password** field as well .



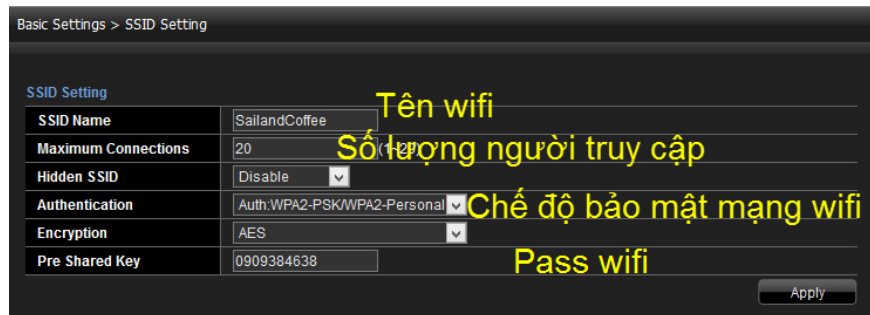
### Step 2:

After successfully logging in, a new interface will appear as shown below. Here, users select **Basic Settings > Wireless Lan > SSID Setting** , and then click **Modify** .



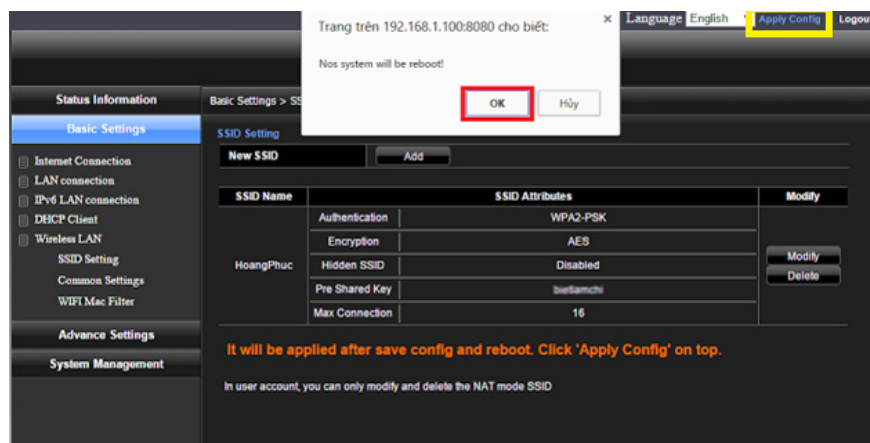
### Step 3:

Next, enter a new WiFi password in the **Pre-Shared Key** field . Enter a new WiFi name in the **SSID Name** field . This will allow users to avoid deleting WiFi access history on their device.



### Step 4:

Then, the user clicks **Apply Config** and then **OK** to save the changes. Finally, restart your WiFi device for the changes to take effect.



Above is how to change the password for Viettel TP-Link, Totolink, Alacatel, and fiber optic WiFi modems. After setting a new name and password for your WiFi, your computer will need some time to reconnect to the

WiFi, so please be patient.

Please refer to the following articles for more information:

1. Instructions on how to change your FPT WiFi password.

1. How do I change my TP-Link WiFi password?

2. 2 steps to change your Linksys WiFi password

Good luck with your project!

You finished reading the article "**How to change your Viettel WiFi password, change your Viettel WiFi password at home using your phone or computer.**" edited by the [TipsMake](#) team. We hope this article has provided you with many useful tech tips and tricks. You can search for similar articles on tips and guides. Thank you for reading and for following us regularly.