

How to change your TP-Link WiFi password on a computer.

TP-Link is a popular Wi-Fi modem today. If you're using a TP-Link modem, check out these instructions on how to change your TP-Link Wi-Fi password on your computer to enhance the security of your network connection.

This article provides the following information:

- How to quickly change the Wi-Fi password on TP-Link devices.
- How to access the Wi-Fi modem's IP address.

Changing your TP-Link modem password is a simple trick that can prevent others sharing the modem or router from abusing bandwidth and accessing settings such as changing the Wi-Fi name or password.



Guide to quickly and effectively changing your TP-Link WiFi password.

Besides changing the login password for your TP-Link router/modem, you can also change your Wi-Fi password to prevent unauthorized access and reduce your internet bandwidth.

How to change the password for a TP-Link WiFi modem.

Step 1: Access the setup page of your router or modem via the address: **192.168.1.1** (or type <https://tplinklogin.net/>)

Or try the following addresses:

- Address 1: 192.168.1.1
- Address 2: 192.168.0.1
- Address 3: tplinkwifi.net
- Address 4: tplinklogin.net

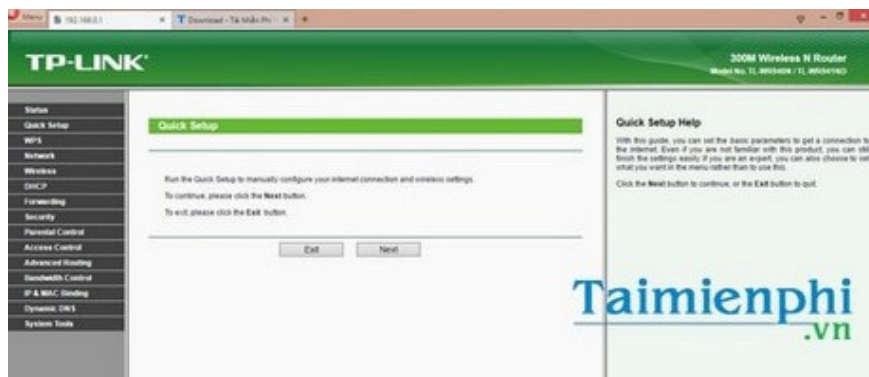
Step 2: Log in to the Wi-Fi setup page with the username and password: **admin** . Make sure your computer's IP address is in the same subnet as the device. This means your computer's IP address should be in the format 192.168.0.X (X is between 2 and 253) and the subnet mask should be 255.255.255.0



Taimienphi
.vn

If you are unable to log in to **tplinkwifi.net** , please refer to the troubleshooting steps in this article.

Step 3: Navigate to **System Tools** -> select **Password** .



Taimienphi
.vn

Here, the router will ask you to enter your old username and password. You need to enter ' **admin** ' here, as mentioned in step 2.

Step 4: Continue by entering your new username, password, and confirm your new password below. Click **Save** to save your newly created username and password.

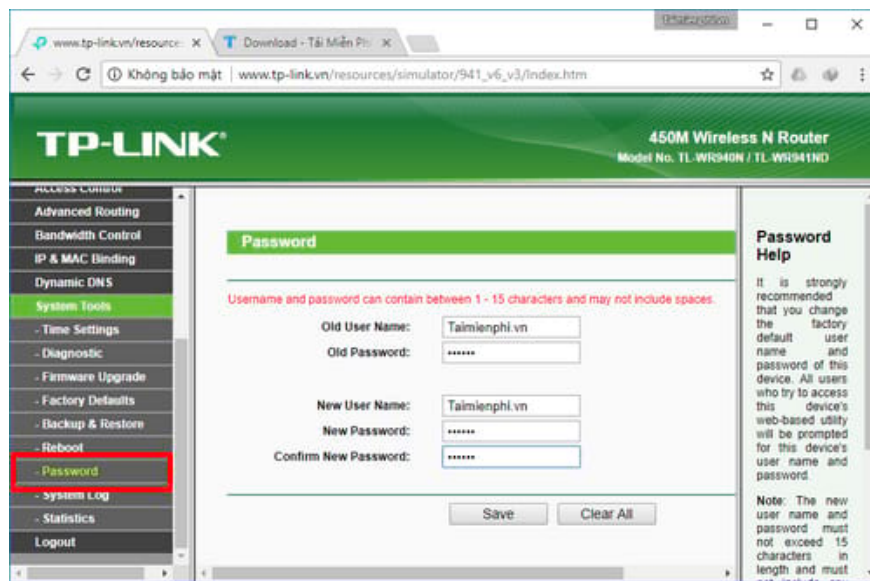


*** Change the password for TP-Link modem models TL-WR940N and TL-WR941ND**

Step 1: Access the setup page of your router or modem via the address: **192.168.1.1** (or type <http://tplinklogin.net/>)

Step 2: Log in to the Wi-Fi setup page with the username and password: **admin** . Make sure your computer's IP address is in the same subnet as the device. This means your computer's IP address should be in the format 192.168.0.X (X is between 2 and 253) and the subnet mask should be 255.255.255.0

Step 3: Navigate to **System Tools** > select **Password** .



Here, the router will ask you to enter your old username and password. You need to enter ' **admin** ' here, as mentioned in step 2.

Step 4: Continue by entering your new username, password, and confirm your new password below. Click **Save** to save your newly created username and password.

*** *Change the password for TP-Link modem models TD-W8960N, TD-W8960NB, TD-W8950ND***

Step 1: Log in to your router's settings via the address: 192.168.1.1 on any browser (or type <http://tplinklogin.net/>).

Step 2: Enter the username and password for the router. By default, routers are always set to "**admin**". Make sure the computer's IP address is in the same subnet as the device. This means the computer's IP address should be in the format 192.168.0.X (X is between 2 and 253) and the subnet mask should be 255.255.255.0

Step 3: Select **Management > Access Control > Password** .

Here, you can enter a new username and password for your router.

Step 4: Finally, click **Save/Apply** to save all changes.

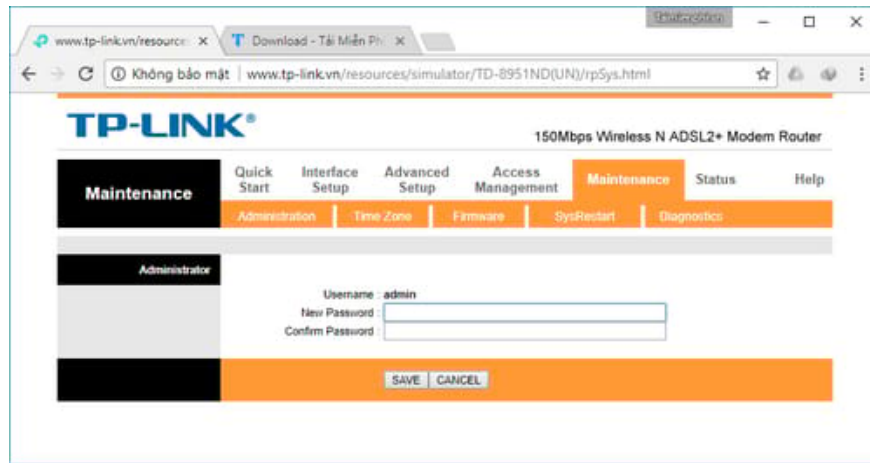
*** *Change the password for TP-Link modem models TD-W8961ND, TD-W8951ND, TD-W8901G, TD-W8901GB, TD-W8901G, TD-W8101G, TD-8840T, TD-8817, TD-8816***

Step 1: Log in to your router's settings via the address: **192.168.1.1** on any browser (or type <http://tplinklogin.net/>).

Step 2: Enter the username and password for the router. By default, routers always use "admin". Make sure your computer's IP address is in the same subnet as the router. This means your computer's IP address should be in the format 192.168.0.X (X is between 2 and 253) and the subnet mask should be 255.255.255.0

Step 3: Select **Maintenance > Administrator** .

At this point, you can freely change the password to log into the router. Unfortunately, this particular Tpl-Link model does not support changing the Wi-Fi username.



Step 4: Click **Save** to save all the configured settings.

So, TipsMake has shown you how to change your TP-Link WiFi modem password.

The method for changing the password on a TP-Link Wifi modem described in this article applies to popular models such as: TL-WR840N, TL-WR841N, TL-WR740N, TL-WR940N, TL-MR3420, and many other models from the same manufacturer.

Changing your Wi-Fi password is always the best way to protect your Wi-Fi from unauthorized access and bandwidth abuse. Therefore, you should change your Wi-Fi password regularly.

A router is an intermediary tool that helps you broadcast Wi-Fi to other devices. In addition, you can use software like Connectify to broadcast Wi-Fi to devices in your home. **Connectify** supports creating a strong Wi-Fi hotspot on your laptop, allowing you to use other phones or laptops to connect to the Wi-Fi signal from Connectify.

Currently, there are many different network modems with different information and accounts for accessing the 192.168.1.1 address. Therefore, you still need to know **the 192.168.1.1 password** on your home or company modem to be able to change the password as well as set up and customize the network system.

You finished reading the article "**How to change your TP-Link WiFi password on a computer.**" edited by the [TipsMake](#) team. We hope this article has provided you with many useful tech tips and tricks. You can search for similar articles on tips and guides. Thank you for reading and for following us regularly.