

# How to change your TeamViewer password to a random one on your PC.

After completing your work, if you don't change your TeamViewer password, others can still use the old ID and password to continue accessing your account, potentially exposing important information. So how do you change your TeamViewer password? Let's find out in the article below.

By regularly **changing your TeamViewer password**, users can confidently control their computers remotely without encountering unauthorized access from outside. This is also a method that many leading security experts trust and recommend users follow.

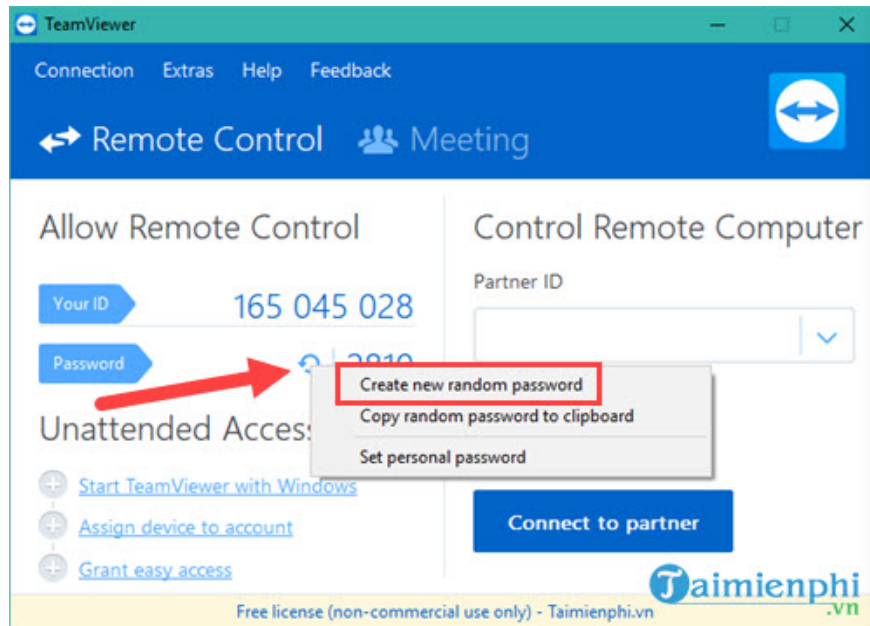


## *How to change your TeamViewer password on a PC or laptop.*

As you know, after installing TeamViewer on your computer, the software will immediately generate a connection ID and password for the user. You can change your TeamViewer password in the two ways below to enhance security and prevent unauthorized access.

### *1. Change your TeamViewer password by creating a new one.*

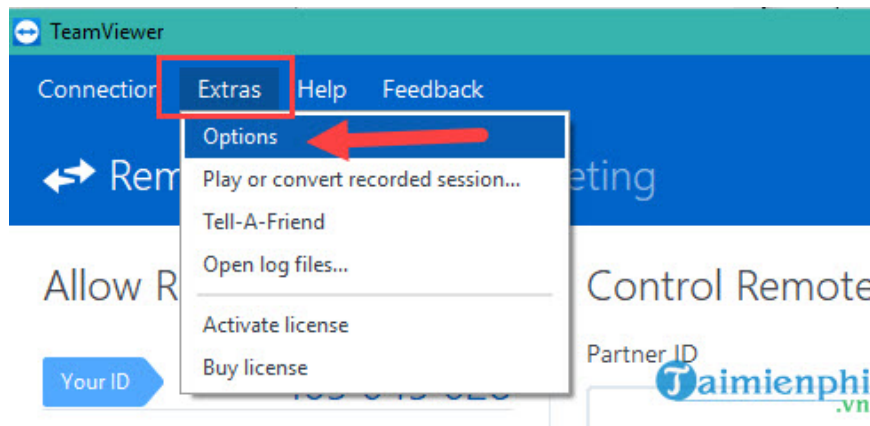
On the main TeamViewer interface, click the arrow icon next to the **Password** section, then click **Create new random password**. The old password will be immediately replaced with a new one. Alternatively, you can close and restart TeamViewer to have the password automatically change.



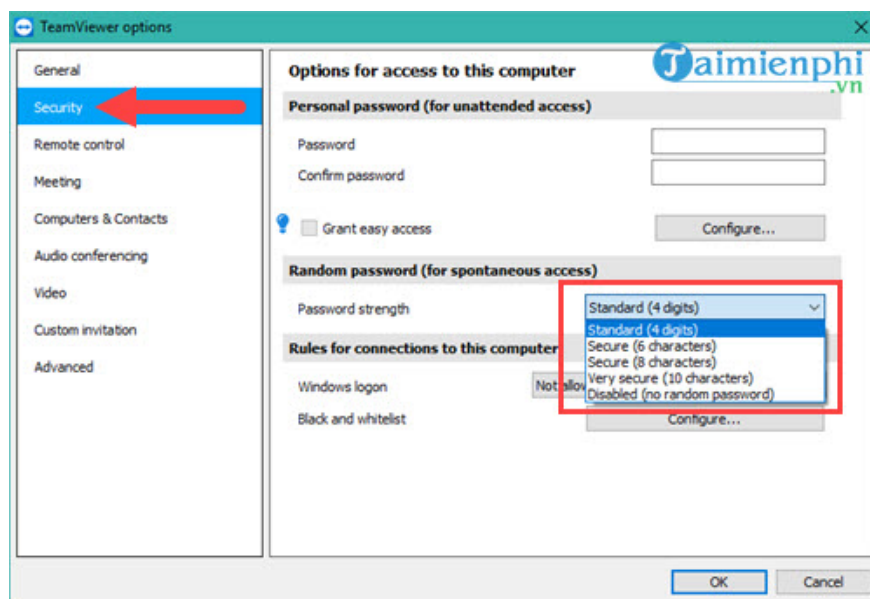
## 2. Customize TeamViewer Password Length

By default, the initial password generated is 4 characters long, but you can change it to 6, 8, or more characters, or you can disable the **Random** (automatic password generation) mode.

*Step 1:* Click **Extras** => click **Options** .



*Step 2:* Switch to the **Security** tab , click on **Password strength** . Here you can change the length of the password or disable the Random option.



## *Things to note when changing your TeamViewer password.*

When changing your TeamViewer password, please note the following points to ensure information security and avoid unnecessary risks.

- **Avoid using easily guessable passwords:** Refrain from using easily recognizable passwords such as "123456" or "password".
- **Increase the length and complexity of your password:** Create a strong password that includes uppercase letters, lowercase letters, numbers, and special characters. The minimum length should be at least 8 characters.
- **Regularly change your TeamViewer password:** Make it a habit to change your password to enhance security.
- **Utilize two-factor authentication:** Users can enable Trusted Devices and Data Integrity on Teamviewer to enhance information security and prevent exploitation by malicious actors.

With the information shared above by TipsMake, readers can now change their TeamViewer password to a random one and simultaneously increase the password length to 4 characters or more, which is extremely effective.

Besides TeamViewer, UltraViewer is also a trusted and widely used remote computer control software due to its stable connection and high security. Readers can easily **install UltraViewer** and use this software to connect multiple computers without paying any service fees.

You finished reading the article "**How to change your TeamViewer password to a random one on your PC.**" edited by the [TipsMake](#) team. We hope this article has provided you with many useful tech tips and tricks. You can search for similar articles on tips and guides. Thank you for reading and for following us regularly.

