

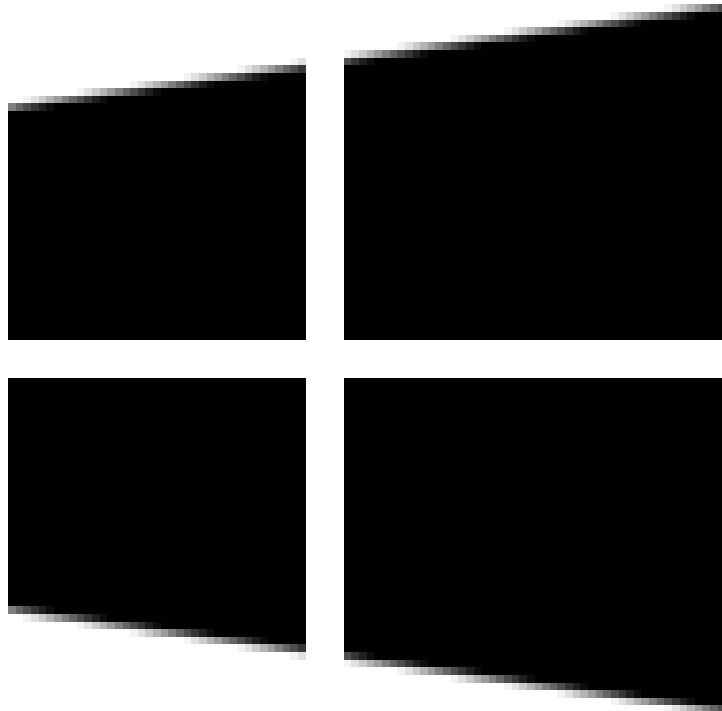
How to Change What Syncs Between Windows 10 Devices

Windows 10 has a whole slew of interesting features, one of which is syncing your settings and options across multiple devices—keeping your computing experience consistent. For example, you can opt to see the same theme on all your d...

Part 1 of 3:

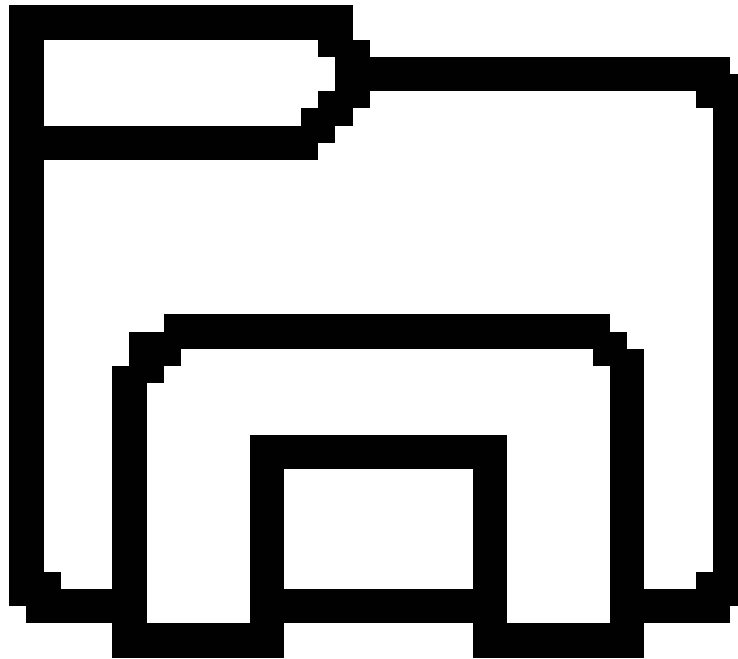
Accessing the Sync Settings

1. **Launch the Start menu.** Click the Start



button.

2. **Click your user profile icon.** It's on the left side of start, towards the bottom above the File Explorer



icon.

1. Older Windows 10 versions will have it at the top of the Start menu along with the account name.

3. Choose **Change account settings** from the dropdown that appears. It's located at the top of the dropdown.

1. You can also go to "Settings > Accounts > Sync your settings".

4. Choose **Sync your settings** from the left pane.

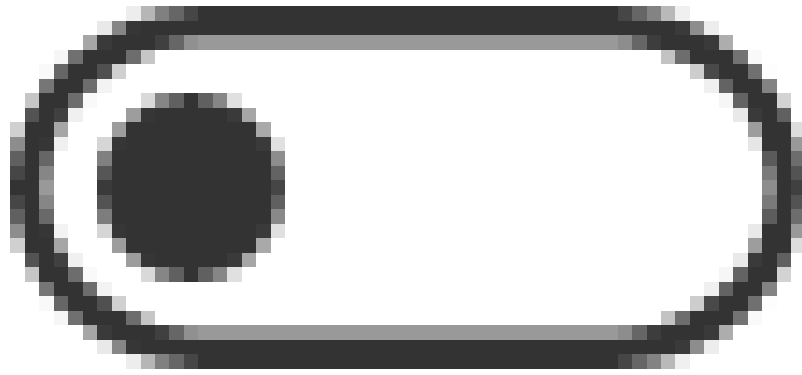
Part 2 of 3:

Choosing What Syncs

1. **Enable/disable syncing completely.** Toggle the "Sync settings" switch on

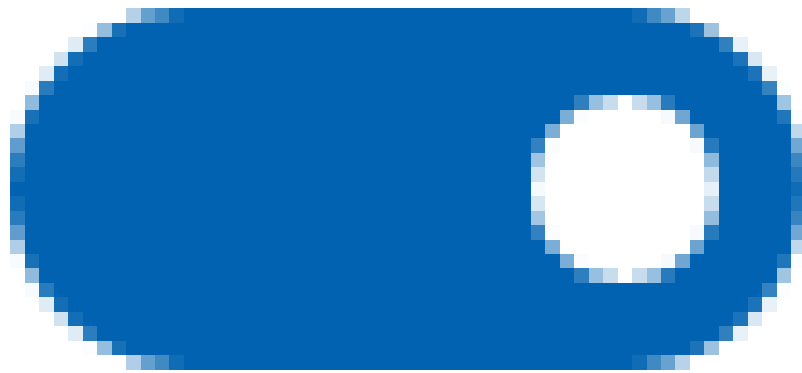


to sync data. Switch it off



to completely disable syncing settings.

2. **Choose what syncs under the "Individual sync settings" header.** Six different options are displayed. An "On"



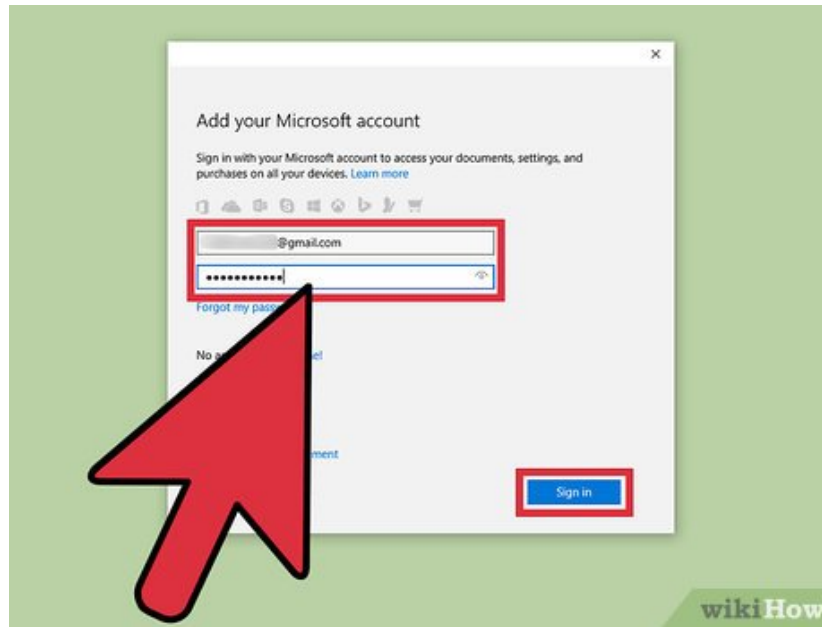
switch means that that specific setting will sync to all the devices that are signed into the current Microsoft account.

1. Each of these are pretty straightforward in showing you what they will be syncing; however, the last one is a bit different. "Other Windows Settings" syncs various settings such as ones from mouse, printers, and File Explorer.
2. You must have internet access in order for your settings to be transferred to a different Windows 10 device.

Part 3 of 3:

Syncing Data to Another Device

1.



Log into another Windows 10 device. Once you have another Windows 10 device in front of you, you will need to log in with the same Microsoft account you used above. When you first created a new account on your Windows 10 device, all sync settings would have been turned on by default, so everything should be synced automatically.

1. If you've made any changes to your sync settings on another device, you'll need to make sure that the sync settings you just enabled on your other Windows 10 device are identical on this Windows 10 device as well.

You finished reading the article "**How to Change What Syncs Between Windows 10 Devices**" edited by the [TipsMake](#) team. We hope this article has provided you with many useful tech tips and tricks. You can search for similar articles on tips and guides. Thank you for reading and for following us regularly.