

# How to change Visual Effects settings in Windows 10

Visual effects are an interesting visual feature of Windows, but they can affect Windows performance on a PC. This article will show you how to change the visual effects settings on Windows 10.

Visual effects are an interesting visual feature of Windows, but they can affect Windows performance on a PC.

1. These factors determine the speed of the computer

If Windows is slow, you can speed it up by disabling some visual effects. Do you want Windows to run faster or need to look better? If your computer is fast, you don't need to turn it off, but if your PC is only strong enough for Windows 10, you can make some visual effects settings changes.

In Windows 10, there are 17 visual effects. You can choose the visual effects you want to turn off, one by one or let Windows choose for you.

This article will show you how to change the visual effect settings you want to use for 'appearance' and performance of Windows 10.

1. Speed up Windows 10 from start up to shutdown
2. On Windows 10 you should disable these features
3. Summary of tips to fix slow computer errors on Windows 10/8 / 8.1 / 7 and Windows XP

**Note:** If you make changes in Ease of Access Center, your visual effects settings will automatically be reset to their defaults.

If you disable the **Animate controls and elements inside windows setting** , you will never see dot animation on restart and shutdown.

The picture effect settings below are often turned off to help improve performance.

1. Animate controls and elements inside windows
2. Animate windows when minimizing and maximizing
3. Animations in the taskbar
4. Fade or slide menus into view
5. Fade or slide ToolTips into view
6. Fade out menu items after clicking
7. Show shadows under windows
8. Slide open combo boxes

## 1. Change picture performance settings in Advanced System settings

**Step 1** . Follow **Step 2** or **Step 3** to open **System Properties** .

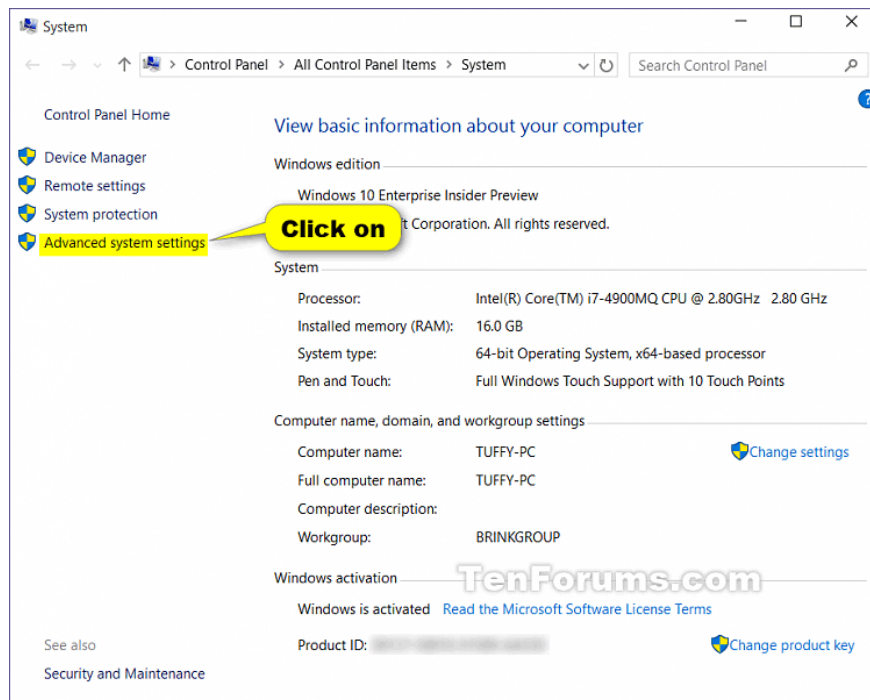
**Step 2** . Press Win + R to open Run, type **SystemPropertiesPerformance.exe** , click **OK** to open Performance Options and go to **Step 7** .

**Note:** This is the only step in this option that standard users can use.

**Step 3** . Open Control Panel, click on the **System** icon and go to **Step 4** .

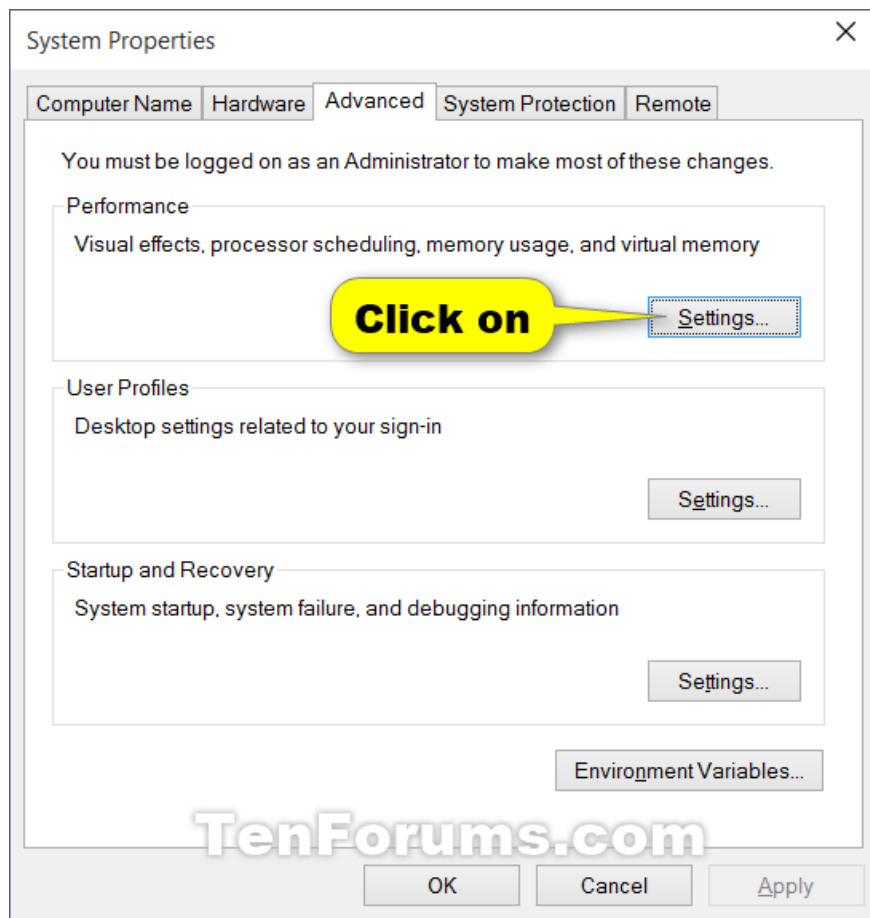
**Note:** You must be logged in as an administrator to perform this step.

**Step 4** . In the left pane, click the **Advanced system settings** link .



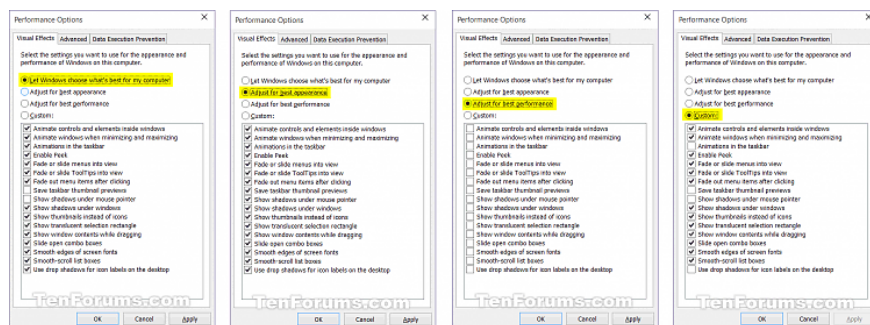
**Step 5** . If you see a UAC message, click **Yes** and close the System window if you like.

**Step 6** . On the Advanced tab, click the **Settings** button under Performance.



**Step 7** . Select the desired image effect settings, adjust and apply the settings as you like, then click **Apply** .

1. **Let Windows choose what's best for my computer** : Windows will automatically turn on and off visual effects that it determines will run well based on system parameters.
2. **Adjust for best appearance**: This option will turn on all visual effects.
3. **Adjust for best performance**: This option will turn off all visual effects.
4. **Custom** : Allows users to enable and disable any visual effect setting. It will be selected by default if you manually enable and disable any visual effects.



**Step 8** . Once completed, click on **OK** .

**Step 9** . If done **Step 3** above, click on **OK** to close System Properties.

## 2. Change the visual effects settings in Registry Editor

**Note:** This option is only for the visual effects below in Registry Editor.

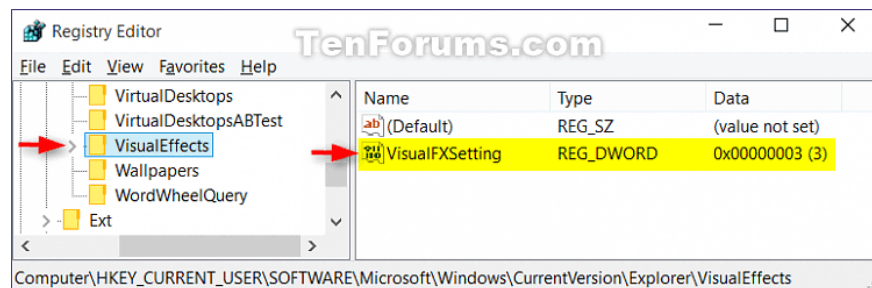
1. Fade or slide menus into view
2. Fade or slide ToolTips into view
3. Fade out menu items after clicking
4. Show shadows under mouse pointer
5. Show shadows under windows
6. Slide open combo boxes
7. Smooth-scroll list boxes

**Step 1.** Type **regdit** in the search box ( Win + S ) on Start or Taskbar and press **Enter** to open Registry Editor.

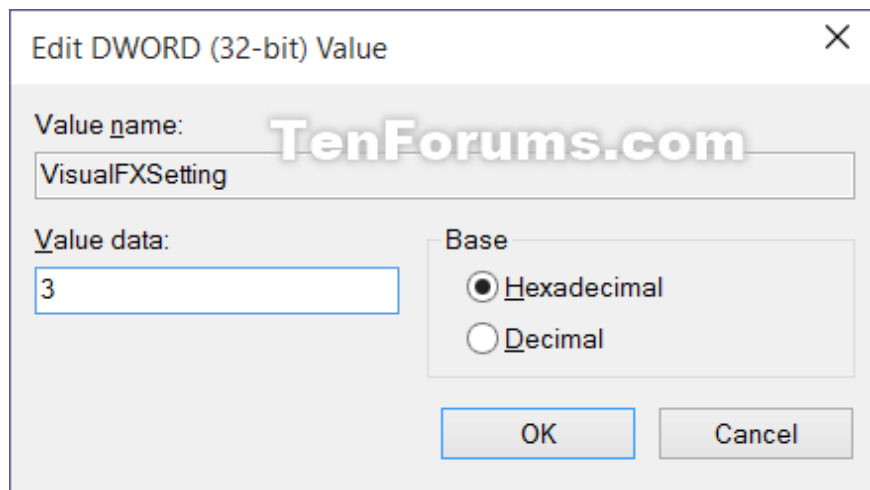
**Step 2 .** If you see the UAC message, click **Yes** .

**Step 3 .** In Registry Editor, navigate to the following location.

HKEY\_CURRENT\_USERSoftwareMicrosoftWindowsCurrentVersionExplorerVisualEffects

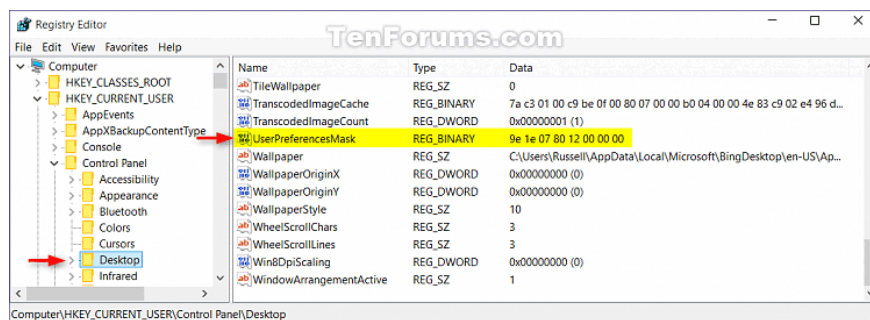


1. Type **0** for **Let Windows choose what's best for my computer** .
2. Type **1** for the **Adjust for best appearance** setting .
3. Type **2** for the **Adjust for best Performance** setting .
4. Type **3** for **Custom** installation.



**Step 6 .** In Registry Editor, navigate to the following location.

HKEY\_CURRENT\_USER\Control Panel\Desktop



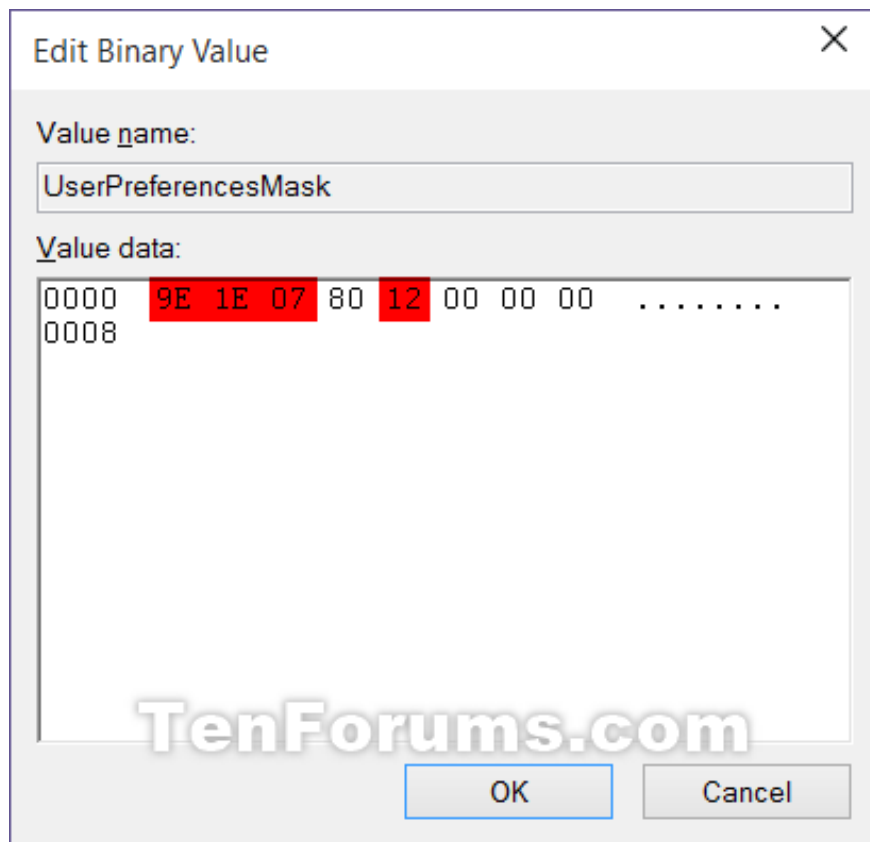
**Step 7 .** In the right pane of **Desktop** , double click DWORD **UserPreferencesMask** to edit it.

**Step 8.** Perform **Step 9**, **Step 10** , **Step 11** or **Step 12** below to follow the settings you choose in **Step 5** .

**Step 9 .** Select the Let Windows choose what's best for my computer setting.

Change the value to the same as the highlighted one below, click on **OK** and go to **Step 13** .

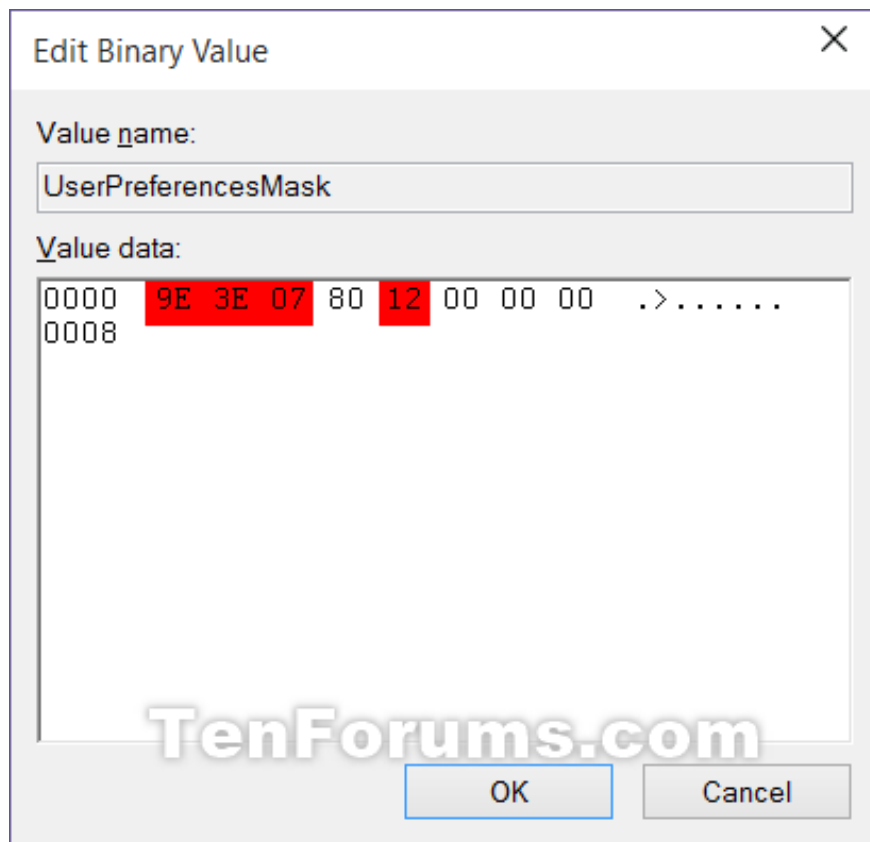
9E 1E 07 80 12 00 00 00



**Step 10** . Choose the Adjust for best appearance setting.

Change the value to the value highlighted in red below, click **OK** and go to **Step 13** .

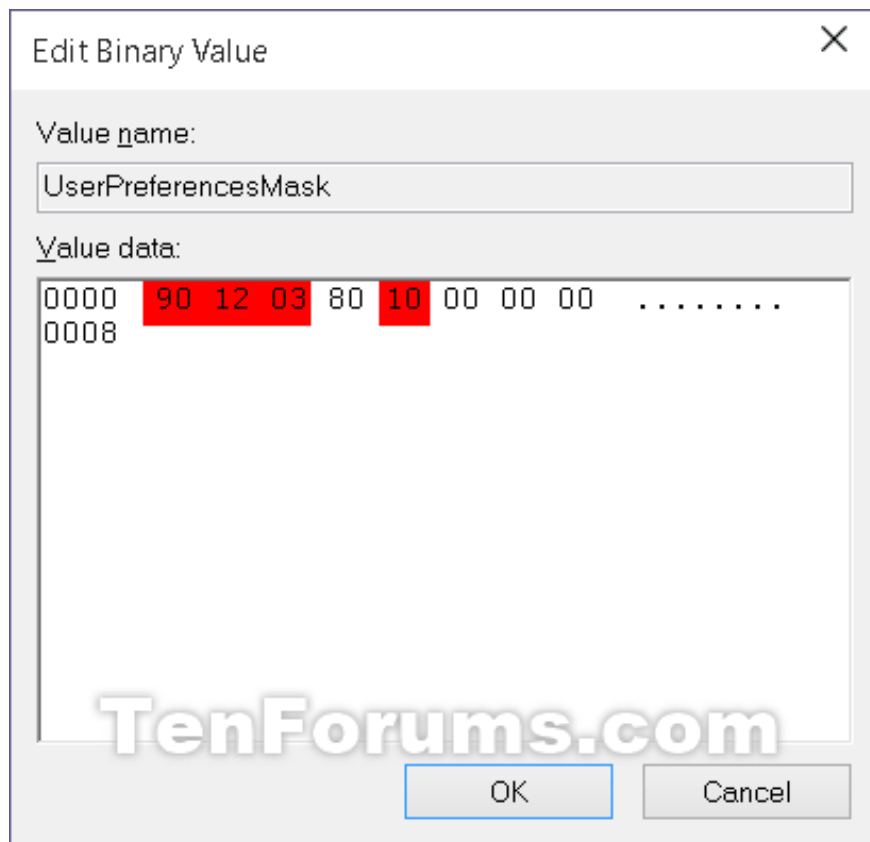
9E 3E 07 80 12 00 00 00



**Step 11** . Select the Adjust for best Performance setting

Change the value to the value highlighted in red below, click **OK** and go to **Step 13** .

9E 12 03 80 10 00 00 00



**Step 12** . Select Custom installation.

Using the binary sets below, change the letters in it to turn on (1) or off (0) for each respective visual effect.

**Note:** The image effects below will require more work to change them in Registry Editor.

We need to use the 3 sets of binary values ??below for the letters in the visual effects you want to turn on or off, and then convert each binary set into hex for 3 hex entries in the registry.

Binary set (3)

1001ABC0 00D1EF10 00000G11

1. 0 = Off
2. 1 = On

Visual effects and their specified letters.

1. (A) Smooth-scroll list boxes
2. (B) Slide open combo boxes
3. (C) Fade or slide menus into view
4. (D) Show shadows under mouse pointer
5. (E) Fade or slide ToolTips into view
6. (F) Fade out menu items after clicking
7. (G) Show shadows under windows

Example: To turn off all the visual effects above, change all the letters in the binary to 0.

10010000 00010010 00000011

For example: To turn on the (C) Fade or slide menus into view only, change the letters in the binary:

10010010 00010010 00000011

Use the binary to hex converter (follow the link below) to convert each individual binary into hex. Press **Enter** after entering the binary value for each set to convert.

<http://easycalculation.com/binary-converter.php>

**Binary To Decimal or Hex Converter**  
Convert Binary To Decimal or Hex :

Insert Binary Value	10010000
Decimal	144
Hex	90

**Binary To Decimal or Hex Converter**  
Convert Binary To Decimal or Hex :

Insert Binary Value	00010010
Decimal	18
Hex	12

**Binary To Decimal or Hex Converter**  
Convert Binary To Decimal or Hex :

Insert Binary Value	00000011
Decimal	3
Hex	3

Example: To turn off all visual effects, convert 3 separate binary sets into hex.

Binary:

10010000 00010010 00000011

Convert to hex:

90 12 3

For example: From the example above, only the C setting is turned on, converting 3 separate binary sets into hex.

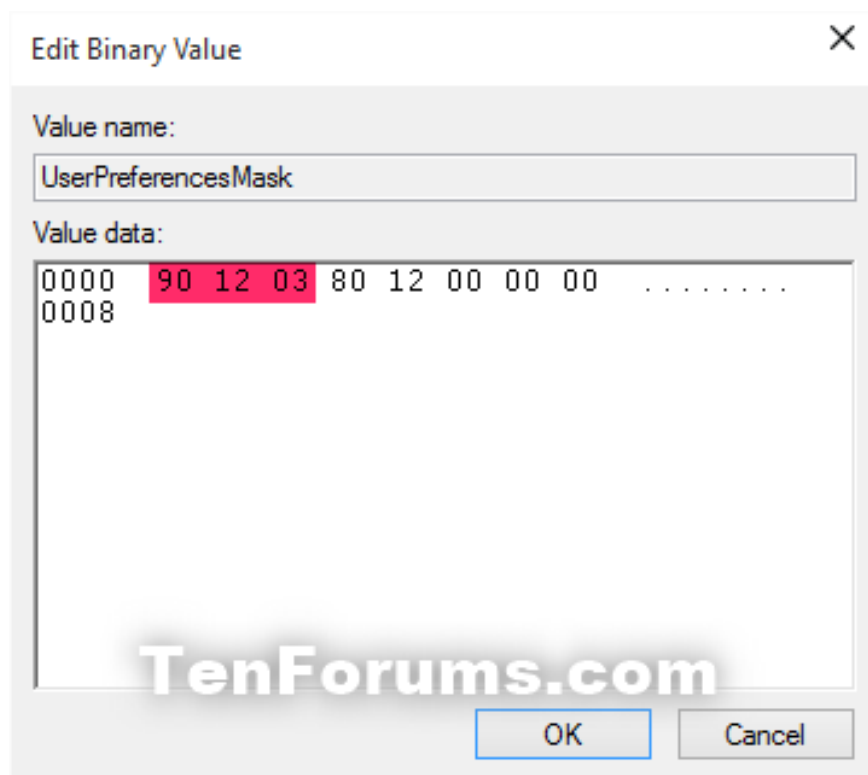
Binary:

10010010 00010010 00000011

Convert to hex:

92 12 3

Change the first 3 values ??(e.g. 90 12 03) underlined in red below with the hex values ??you get above, click on **OK** and go to **Step 13** below.



**Step 13** . Close Registry Editor.

**Step 14** . Log out and log in or restart the computer to apply the changes.

I wish you successful implementation!

You finished reading the article "**How to change Visual Effects settings in Windows 10**" edited by the [TipsMake](#) team. We hope this article has provided you with many useful tech tips and tricks. You can search for similar articles on tips and guides. Thank you for reading and for following us regularly.