

How to change TP-LINK TL-WR845N WiFi password, simple operation

TP-LINK TL-WR845N WiFi is one of the popular transmitters. To avoid using it for free and reducing connection speed, users should change their password periodically.

Changing TP-LINK TL-WR845N WiFi password helps enhance security and prevent unauthorized access. With just a few simple steps, you can change the password and manage your network connection effectively.

Prepare before changing password

- Make sure the device is connected to the TP-LINK TL-WR845N WiFi.
- Determine the router's IP address (usually 192.168.1.1 or 192.168.0.1).
- Check the account and password to log in to the administration page (usually admin/admin).

Instructions for changing TP-LINK TL-WR845N Wifi password

Step 1: Connect your computer to the router

First, connect your laptop or PC directly to the router using a network cable. If there are multiple modems in the system, unplug some network cables to avoid connection conflicts.

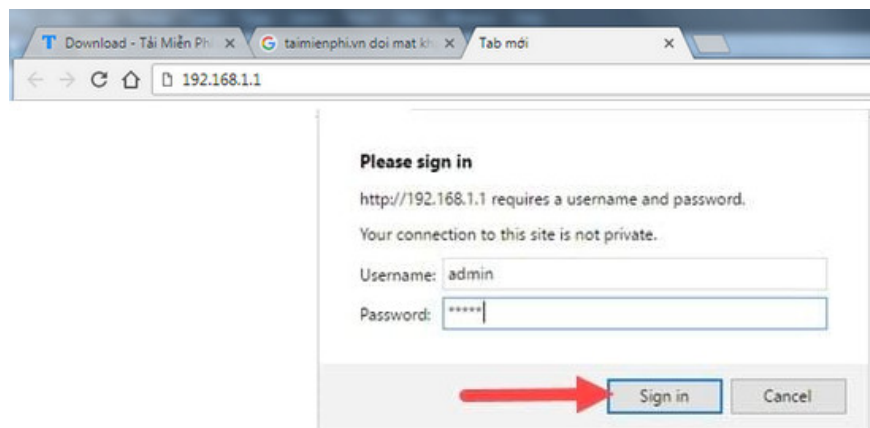


Step 2: In case you do not know the access address, you can **open the back of the device** or modem to find the default address, account and password.



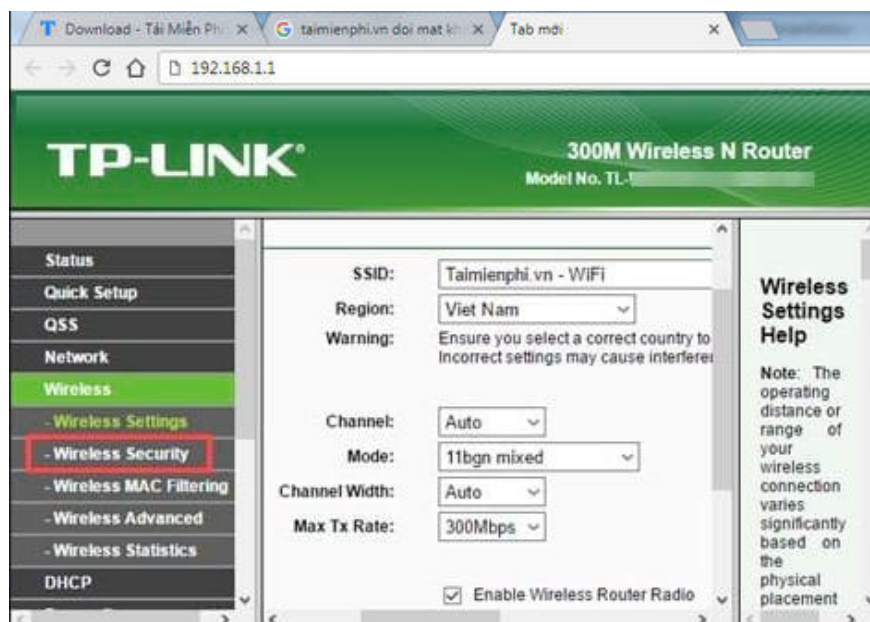
Step 3: Access the WiFi administration page

- Open a web browser, enter the address 192.168.1.1 (or the address printed on the router's label).
- Log in with the default account (admin/admin) or the information printed on the router.



Step 4: Open WiFi security settings

- After logging in, select Wireless > Wireless Security.
- This is where you can change your WiFi password.



Step 5: In the Wireless Security section, you have 4 options:

- **Disable Security:** If you use this mode your WiFi will be completely free and without a password.
- **WEP:** An old security standard, running on 256-bit WEP technology and still one of the most widely used standards in the past.
- **WPA:** Extremely strong WiFi security standard, allowing you to use a combination of characters and letters for your password.
- **WPA 2:** The latest standard to upgrade the current WPA, the most popular and widely used with strong security capabilities, advanced protection algorithms and up to now no one has been able to completely crack this system.

After choosing 1 of the 4 standards, you just enter the password in the Password box and Save it.

Wireless Security

Disable Security

WEP

Type: Automatic

WEP Key Format: Hexadecimal

Key Selected	WEP Key	Key Type
Key 1: <input type="radio"/>		Disabled
Key 2: <input type="radio"/>		Disabled
Key 3: <input type="radio"/>		Disabled
Key 4: <input type="radio"/>		Disabled

WPA/WPA2

Version: Automatic

Encryption: Automatic

Radius Server IP:

Radius Port: 1812 (1-65535, 0 stands for default port 1812)

Radius Password:

Group Key Update Period: 0 (in second, minimum is 30, 0 means no update)

WPA-PSK/WPA2-PSK

Version: Automatic

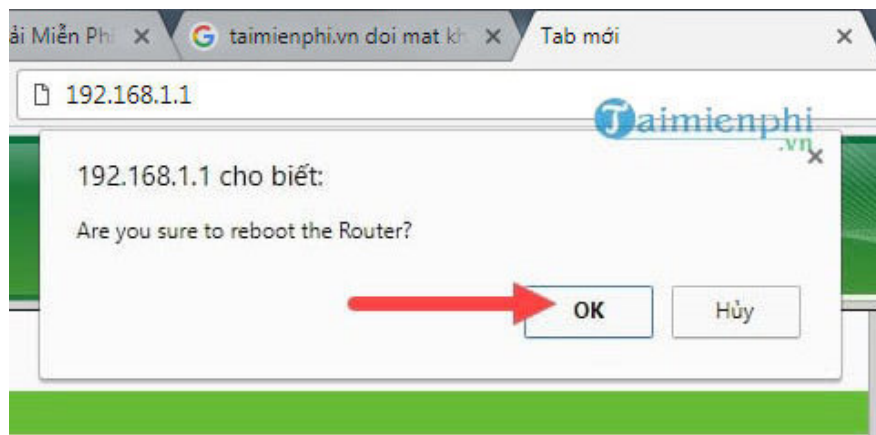
Encryption: Automatic

PSK Password: taimienphi

(You can enter ASCII characters between 8 and 63 or Hexadecimal characters between 8 and 64.)

Group Key Update Period: 0 (in second, minimum is 30, 0 means no update)

Step 6: After saving the password, there will be a notification asking to **reboot** the device.



Step 7: Scroll down to the bottom of the page and click **Click here** to restart the program.



So, you have completed changing the TP-LINK TL-WR845N WiFi password with just a few simple steps. This is a popular device, supports good security and is easy to manage. If you use other TP-Link router lines, the implementation process is similar.

You finished reading the article "**How to change TP-LINK TL-WR845N WiFi password, simple operation**" edited by the [TipsMake](#) team. We hope this article has provided you with many useful tech tips and tricks. You can search for similar articles on tips and guides. Thank you for reading and for following us regularly.