

# How to Change Time Zone on Linux

Today's TipsMake will show you how to change the time zone on your Linux computer. You can change the time zone on any Linux distribution using the command line or command line menu depending on the Linux version. If you are using Mint, Ubuntu or another distribution with a simple user interface and settings menu, you can also change the time zone right here.

## By command line




**Open Terminal.** Select Terminal from the list of programs on Linux or press the key combination `Ctrl+Alt+T`.

```
wiki@wikihow: ~
wiki@wikihow:~$ sudo dpkg-reconfigure tzdata
[sudo] password for wiki:

Current default time zone: 'America/New_York'
Local time is now:      Tue Oct 17 07:36:19 EDT 2017.
Universal Time is now:  Tue Oct 17 11:36:19 UTC 2017.

wiki@wikihow:~$ date
Tue Oct 17 07:36:23 EDT 2017
wiki@wikihow:~$
```



TipsMake


**Check current time zone.** Type `date` into Terminal then press `Enter`. Terminal will display the date in the format `Th? Tháng Ngày Gi? Múi gi? N?m`(English abbreviation).

For example, in the line `Wed Mar 7 07:38:23 EDT 2017`"EDT" is the abbreviation for the current time zone (Eastern Daylight Time: summer time in the Eastern United States).

```
wiki@wikihow: /usr/share/zoneinfo
wiki@wikihow:~$ sudo dpkg-reconfigure tzdata
[sudo] password for wiki:

Current default time zone: 'America/New_York'
Local time is now:      Tue Oct 17 07:36:19 EDT 2017.
Universal Time is now:  Tue Oct 17 11:36:19 UTC 2017.

wiki@wikihow:~$ date
Tue Oct 17 07:38:23 EDT 2017
wiki@wikihow:~$ cd /usr/share/zoneinfo
wiki@wikihow: /usr/share/zoneinfo$ tzselect
```



TipsMake

**Check available time zones.** Type `cd /usr/share/zoneinfo` and tap `Enter`, then tap `tzselect` then tap `Enter` to display the list of places.

The directory `/usr/share/zoneinfo` may vary depending on the Linux version.

```
wiki@wikihow: /usr/share/zoneinfo
wiki@wikihow:~$ sudo dpkg-reconfigure tzdata
[sudo] password for wiki:

Current default time zone: 'America/New_York'
Local time is now:      Tue Oct 17 07:36:19 EDT 2017.
Universal Time is now: Tue Oct 17 11:36:19 UTC 2017.

wiki@wikihow:~$ date
Tue Oct 17 07:38:23 EDT 2017
wiki@wikihow:~$ cd /usr/share/zoneinfo
wiki@wikihow:~/usr/share/zoneinfo$ tzselect

Please identify a location so that time zone rules can be set correctly.
Please select a continent, ocean, "coord", or "TZ".
1) Africa
2) Americas
3) Antarctica
4) Asia
5) Atlantic Ocean
6) Australia
7) Europe
8) Indian Ocean
9) Pacific Ocean
10) coord - I want to use geographical coordinates.
11) TZ - I want to specify the time zone using the Posix TZ format.
#?
```

**TipsMake**

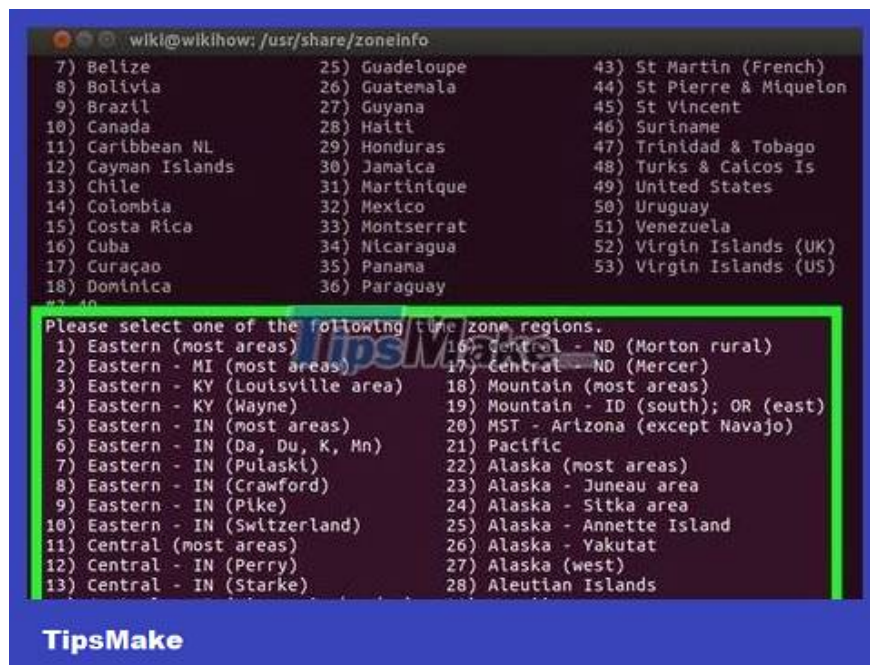
**Select a continent or ocean.** Enter a number that represents an option related to your general location, then tap ? Enter.

```
wiki@wikihow: /usr/share/zoneinfo
3) Antarctica
4) Asia
5) Atlantic Ocean
6) Australia
7) Europe
8) Indian Ocean
9) Pacific Ocean
10) coord - I want to use geographical coordinates.
11) TZ - I want to specify the time zone using the Posix TZ format.
#?
```

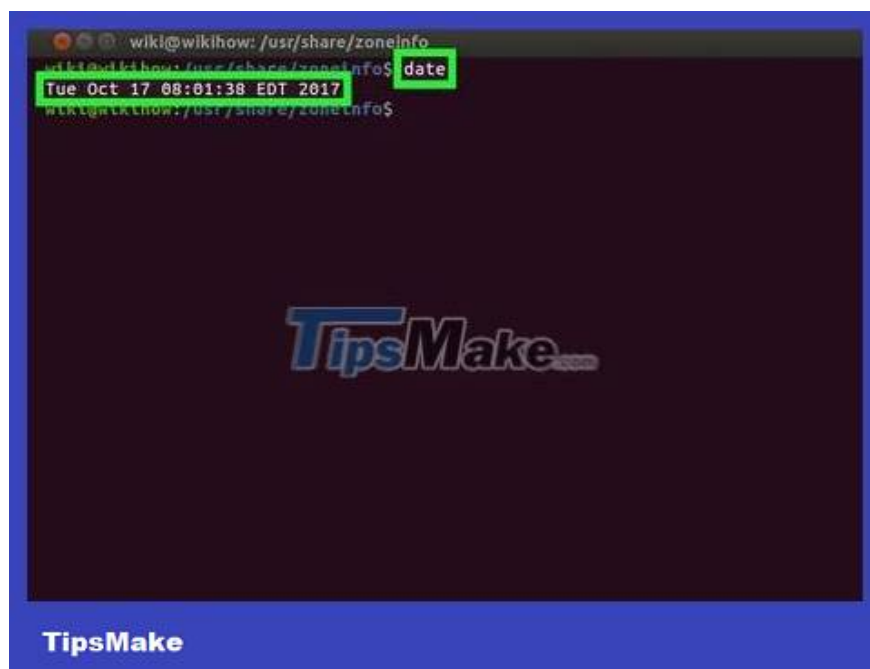
```
Please select a country whose clocks agree with yours.
1) Anguilla          19) Dominican Republic  37) Peru
2) Antigua & Barbuda 20) Ecuador              38) Puerto Rico
3) Argentina        21) El Salvador         39) St Barthelemy
4) Aruba            22) French Guiana      40) St Kitts & Nevis
5) Bahamas         23) Greenland          41) St Lucia
6) Barbados        24) Grenada            42) St Maarten (Dutch)
7) Belize          25) Guadeloupe        43) St Martin (French)
8) Bolivia         26) Guatemala         44) St Pierre & Miquelon
9) Brazil          27) Guyana            45) St Vincent
10) Canada         28) Haiti             46) Suriname
11) Caribbean NL   29) Honduras          47) Trinidad & Tobago
12) Cayman Islands 30) Jamaica           48) Turks & Caicos Is
13) Chile          31) Martinique        49) United States
14) Colombia      32) Mexico            50) Uruguay
15) Costa Rica    33) Montserrat       51) Venezuela
16) Cuba          34) Nicaragua        52) Virgin Islands (UK)
```

**TipsMake**

**Select country.** Enter the number representing the option in the list on the screen, then press ? Enter.



**Select time zone.** Enter the number representing the regional time zone you want to select and press ? Enter.  
 If your city is not on the list, choose another city in the same time zone as you.



**Confirm local time.** On the next command line, confirm the local time is correct by pressing 1 then ? Enter.  
 If the time is not correct, enter it 2, press ? Enter, then select a new continent and repeat the process.

```
wiki@wikihow: /usr/share/zoneinfo
Please select one of the following time zone regions.
1) Eastern (most areas)          16) Central - ND (Morton rural)
2) Eastern - MI (most areas)    17) Central - ND (Mercer)
3) Eastern - KY (Louisville area) 18) Mountain (most areas)
4) Eastern - KY (Wayne)         19) Mountain - ID (south); OR (east)
5) Eastern - IN (most areas)    20) MST - Arizona (except Navajo)
6) Eastern - IN (Da, Du, K, Mn) 21) Pacific
7) Eastern - IN (Pulaski)       22) Alaska (most areas)
8) Eastern - IN (Crawford)      23) Alaska - Juneau area
9) Eastern - IN (Pike)          24) Alaska - Sitka area
10) Eastern - IN (Switzerland)  25) Alaska - Annette Island
11) Central (most areas)        26) Alaska - Yakutat
12) Central - IN (Perry)        27) Alaska (west)
13) Central - IN (Starke)       28) Aleutian Islands
14) Central - MI (Wisconsin border) 29) Hawaii
15) Central - ND (Oliver)
#? 1

The following information has been given:

    United States
    Eastern (most areas)

Therefore TZ='America/New_York' will be used.
Local time is now:   Tue Oct 17 07:57:31 EDT 2017.
Universal Time is now: Tue Oct 17 11:57:31 UTC 2017.
Is the above information OK?
```

**Confirm that the time zone is set.** Execute the command `date` again and check if this time zone corresponds to the time you just changed. If you see the new time appear, it means you have successfully changed the time zone on your computer.

```
steve@ubuntu: ~
steve@ubuntu:~$ sudo apt install ntp
```

**Set up your clock to sync with an internet time server if you prefer.** Most modern distributions come with the Network Time Protocol (NTP) pre-installed. If your Linux distribution doesn't have it then install this NTP server package. Use the following commands to install depending on your Linux distribution:

*Ubuntu/Mint/Debian* : `sudo apt install ntpdate`

*CentOS* : `sudo yum install ntpdate`  
`sudo /sbin/chkconfig ntpd on`

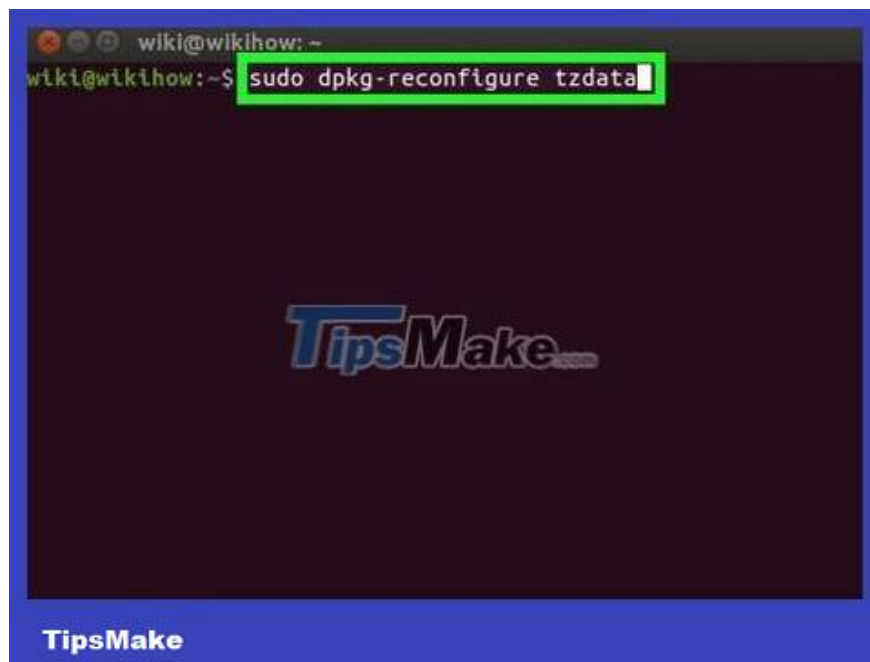
*Fedora/RedHat*:`sudo yum install ntpdate`  
`sudo chkconfig ntpd on`

Enter after the installation command, remember to replace *the server link* with the link to the website.`ntpdate server link && hwclock -w`

## Using the time zone selection menu



**Open Terminal.** Select Terminal from the list of programs on Linux or press the key combination `Ctrl+Alt+T`.



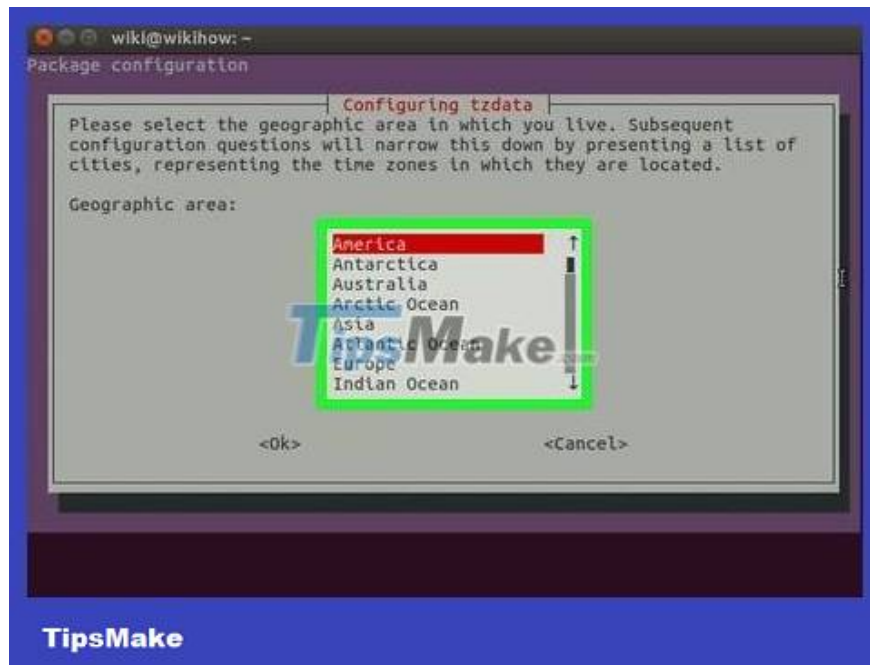
**Enter the command to open the time zone menu.** Depending on the Linux distribution, this command will be different:

*Ubuntu and Mint* - `sudo dpkg-reconfigure tzdata` followed by admin/user password.

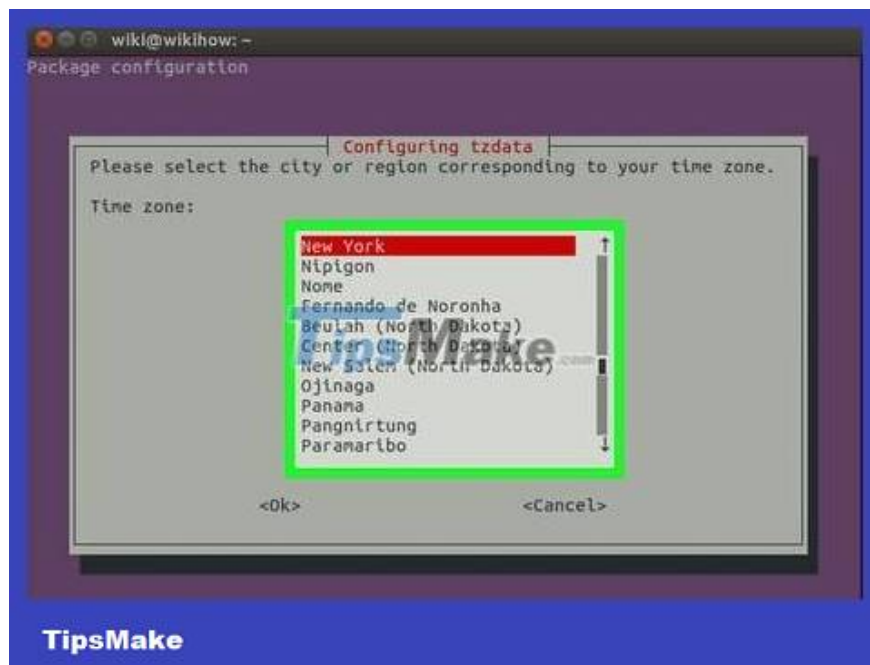
*Redhat* - `redhat-config-date`

*CentOS and Fedora* - `system-config-date`

*FreeBSD and Slackware* - `tzselect`



**Select geographical region.** Use the arrow keys to select the geographic region to which the country belongs, then press ? Enter.

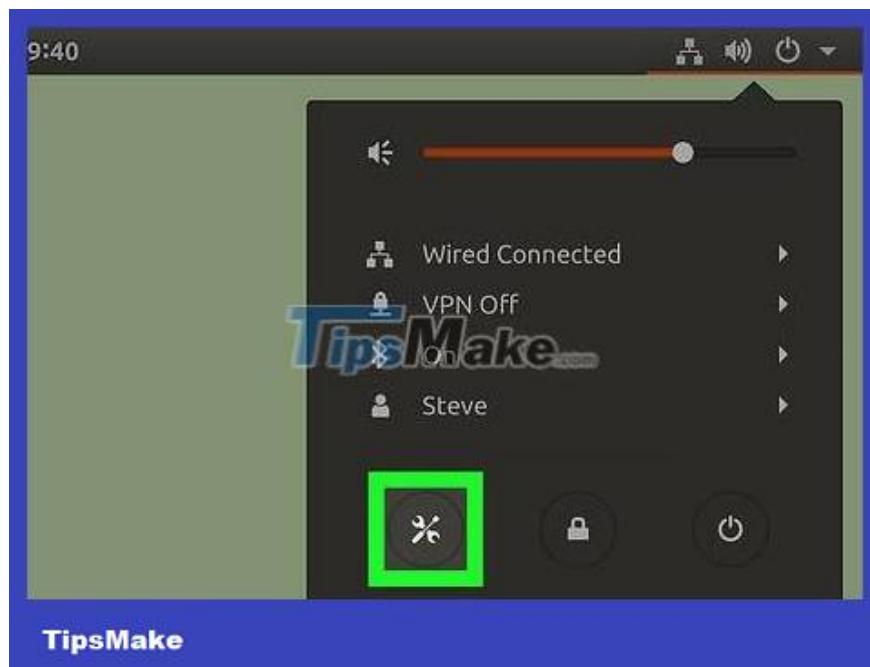


**Select city/region.** Select the city or region that corresponds to your time zone then tap ? Enter. The time zone will be changed on the system.

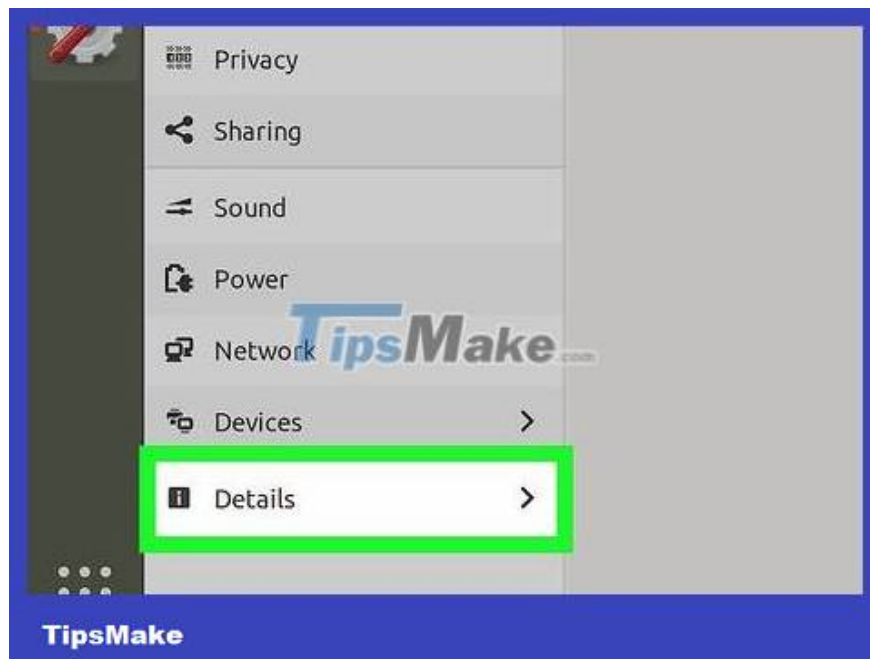
## Using the graphical user interface on Ubuntu



**Click the "system menu" icon.** The option has a downward-facing triangle in the upper right corner of the screen. A drop-down menu will appear.

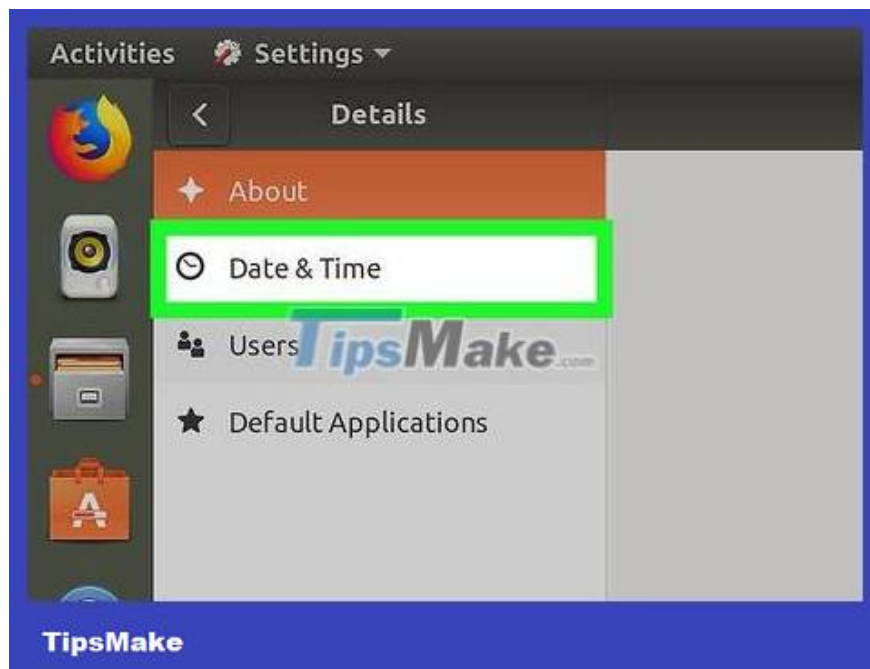


Click the wrench and screwdriver "settings" icon in the lower left corner of the drop-down menu. The Ubuntu Control Center will open.

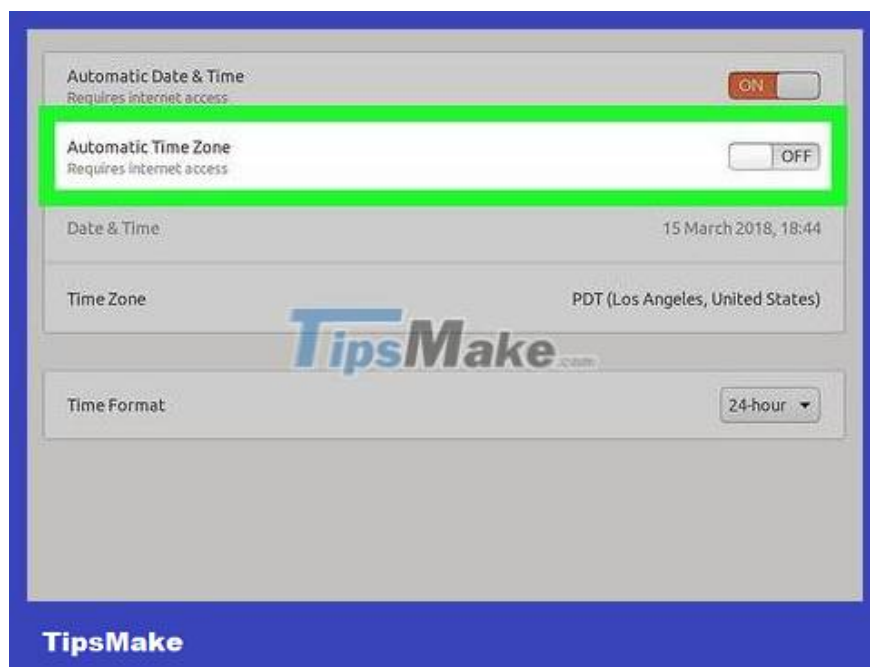


Scroll down and click **Details** . Options are at the bottom of the bar on the left side of the window.

You need to make sure the mouse pointer is on the left bar when scrolling.

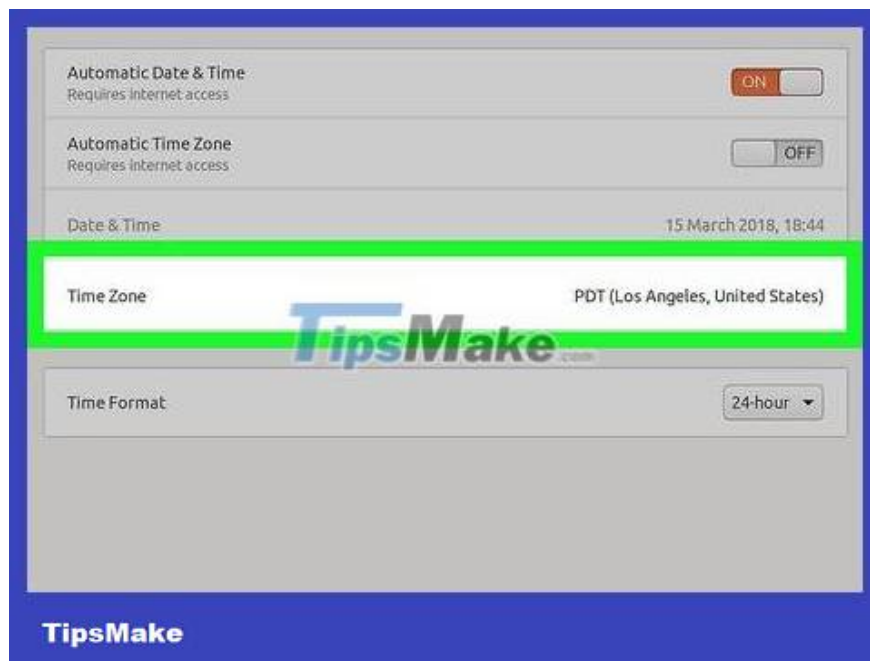


**Click Date & Time .** This tab is on the left side of the window.

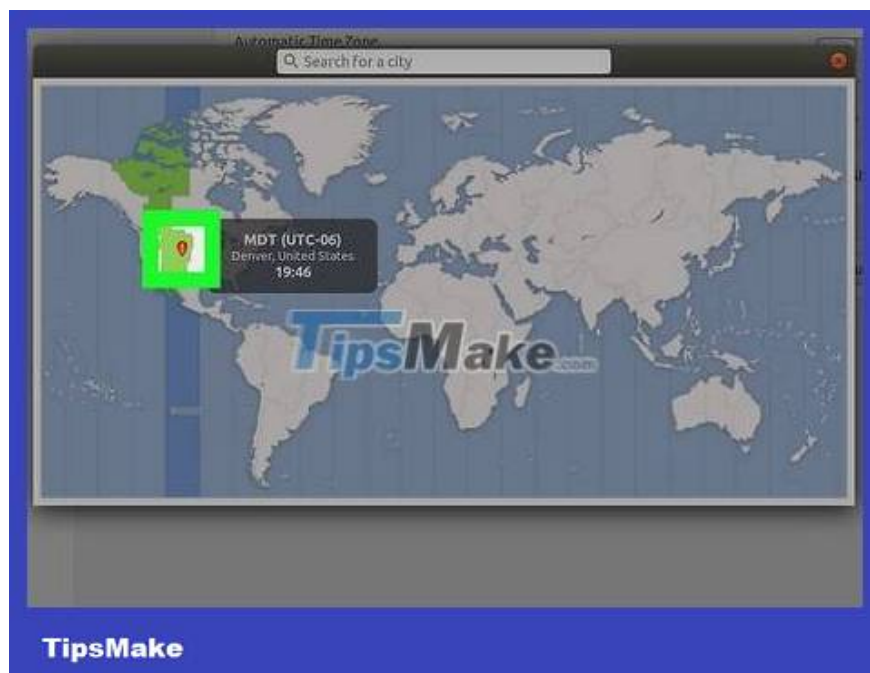


**Turn off Automatic Time Zone.** Click the blue "Automatic Time Zone" switch in the middle of the page to turn it off.

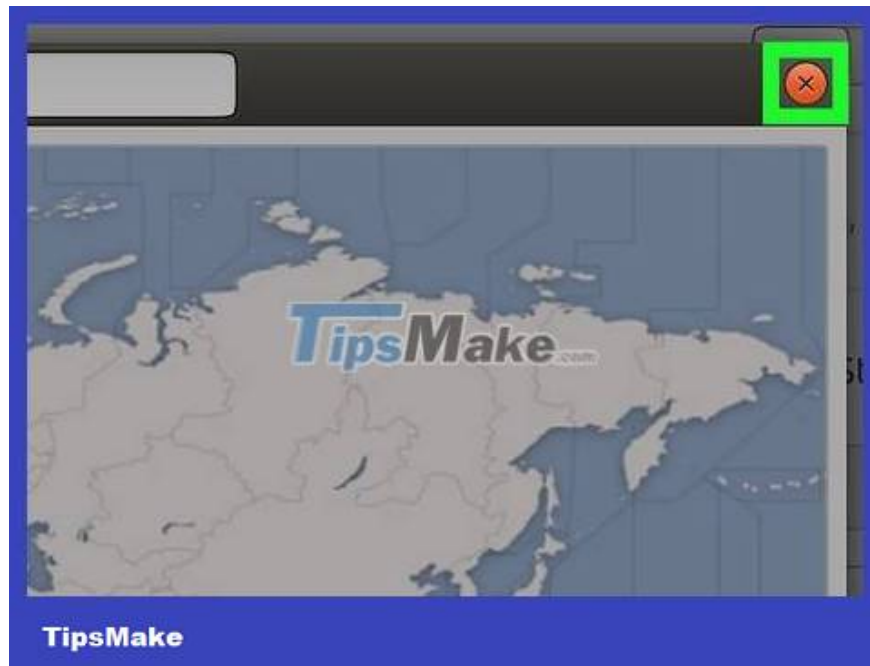
If the "Automatic Time Zone" switch is gray, skip this step.



Click **Time Zone** near the bottom of the window. The Time Zone menu opens.

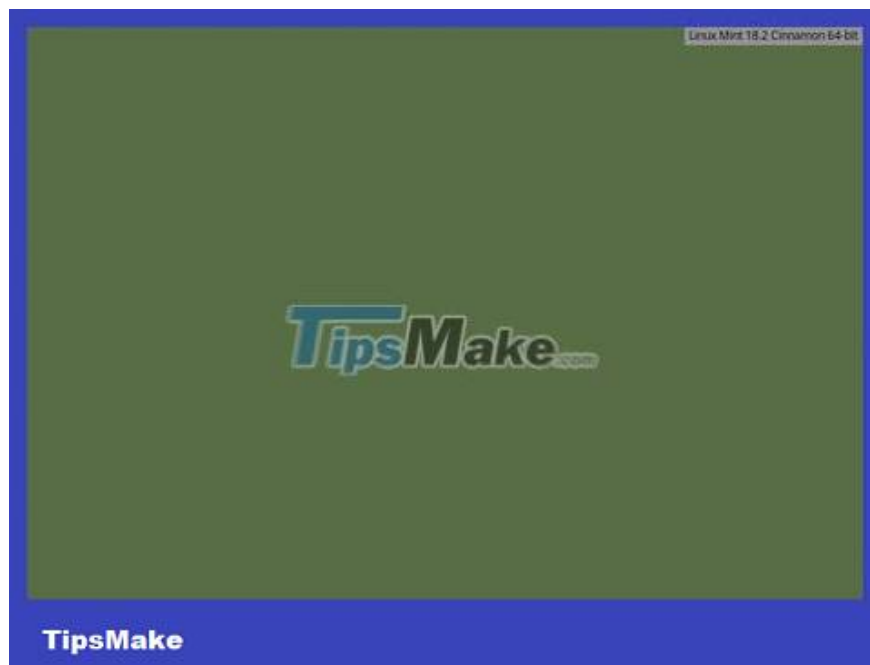


**Select time zone.** Click your approximate location on the world map to select it. The time will change to match the time zone of the region you select.



Close the window to save the settings. The appropriate time zone will be updated.

### Using the Mint graphical user interface

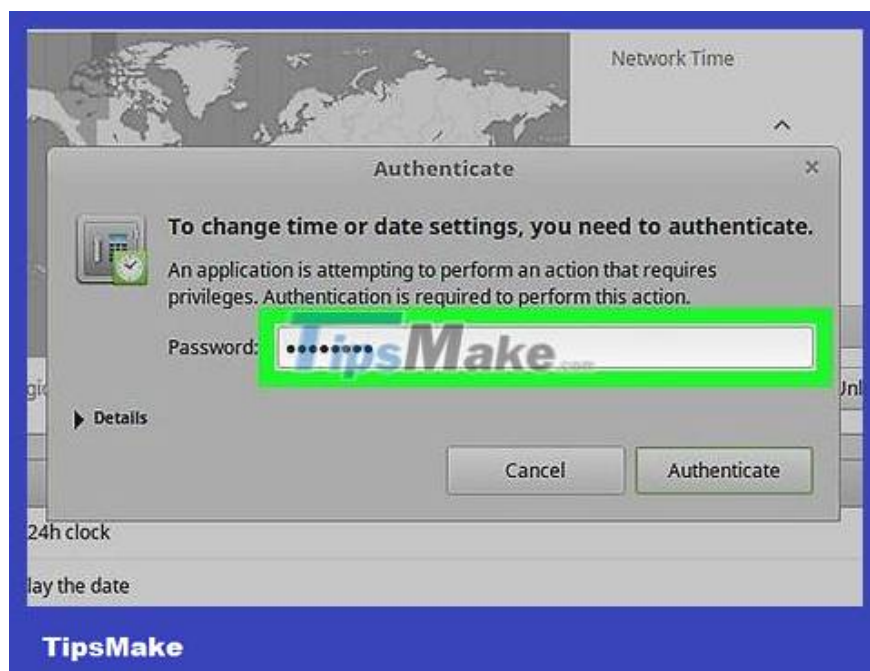


Open Menu. Click **Menu** in the lower left corner of the screen.

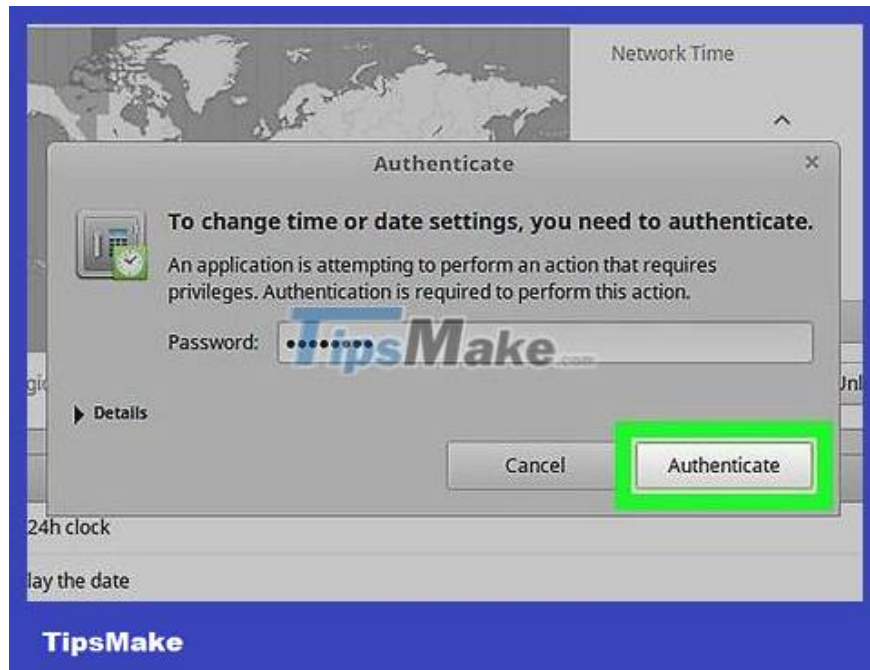




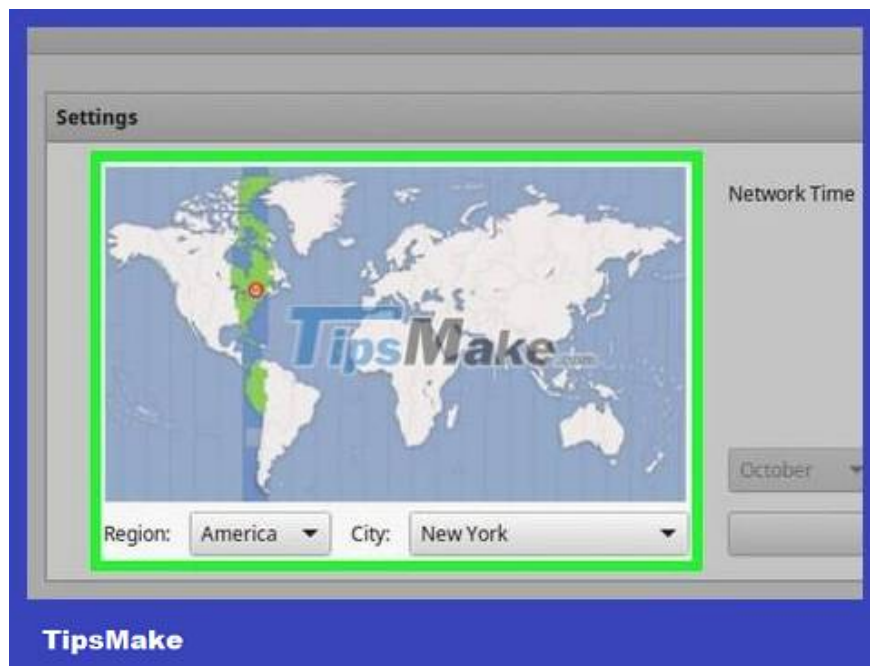
Click **Unlock** on the right side of the window.



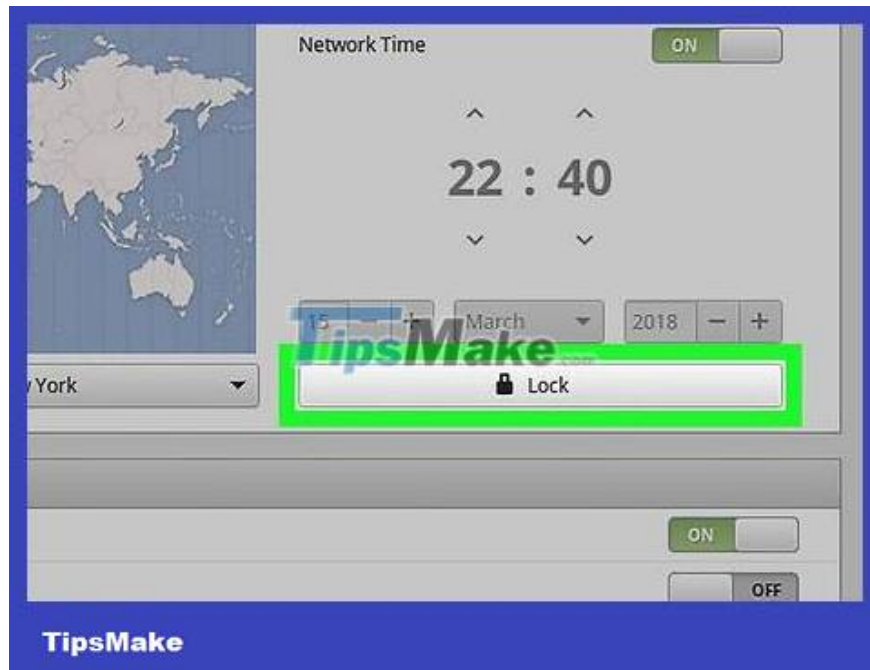
Enter the user password when prompted. Enter the password you use to log into your computer.



**Click Authenticate . It's at the bottom of the pop-up dialog box. The Date & Time menu will be unlocked.**



**Select time zone.** Click the vertical bar on the map to select a time zone. The clock on the right side of the page will change immediately to reflect the time of the selected time zone.



**Click Lock on the right side of the window to save your time zone settings.** The Date & Time menu will be locked.

You finished reading the article "**How to Change Time Zone on Linux**" edited by the [TipsMake](#) team. We hope this article has provided you with many useful tech tips and tricks. You can search for similar articles on tips and guides. Thank you for reading and for following us regularly.