

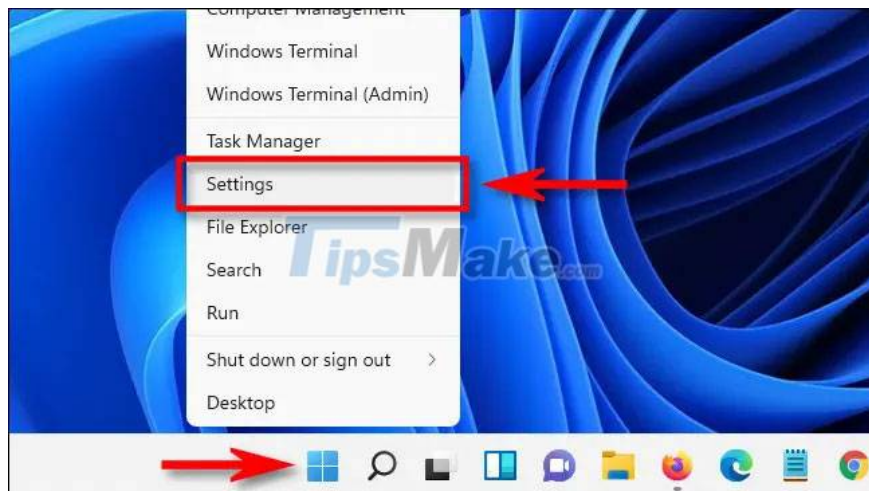
How to change the page scroll direction of the touchpad on Windows 11

While getting used to and using the touchpad isn't too complicated, sometimes you still need to change a few necessary settings to make the process simpler and more productive.

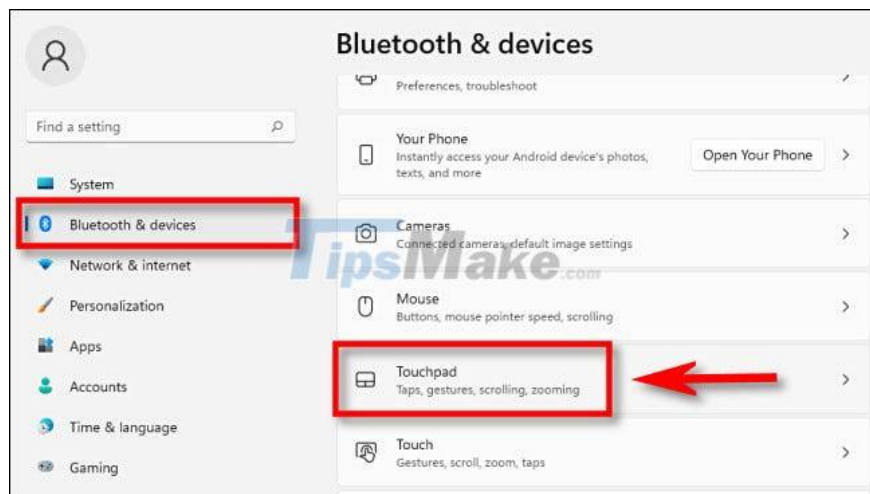
The touchpad is an indispensable component on any laptop. While getting used to and using the touchpad isn't too complicated, sometimes you still need to change a few necessary settings to make the process simpler and more productive.

For example, by default, the touchpad on Windows 11 may not scroll in the direction you want when using two-finger swipe gestures. In this case, you can easily change the scrolling direction of the touchpad in Settings. Here's how to do it.

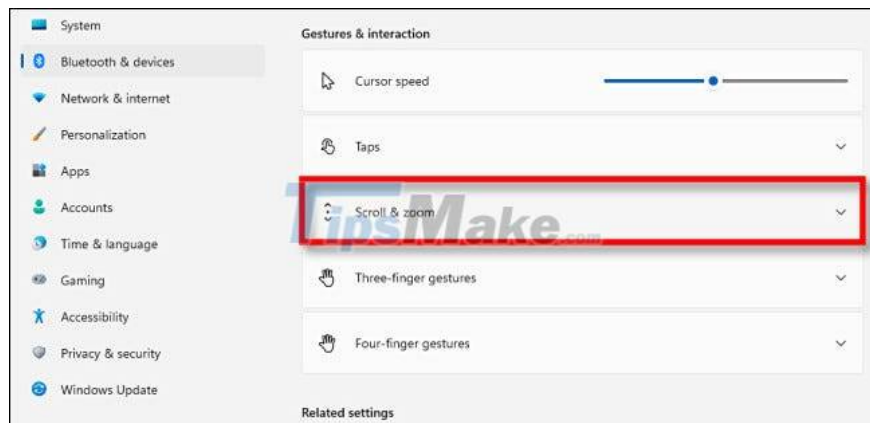
First, press the Windows + i key combination to open the Windows Settings application. Or you can also right-click the Start button on the taskbar and select 'Settings' in the pop-up menu.



In the Settings window that opens, click 'Bluetooth & Devices' in the list on the left, then look to the right screen and select 'Touchpad'.



In the Touchpad settings window, click on 'Scroll & Zoom', and immediately a list of available options will appear.



Next, click the drop-down menu labeled 'Scrolling Direction'. Now you will see 2 options 'Down Motion Scrolls Up' and 'Down Motion Scrolls Down'. The specific functions of these options are as follows:

1. Down Motion Scrolls Up: A two-finger swipe up on the trackpad causes the window content to scroll down. Also known as 'rollback'.
2. Down Motion Scrolls Down: A two-finger downward swipe on the trackpad causes the window content to scroll down. This is called forward scrolling, similar to when you scroll the page with the mouse wheel at the default setting.



Choose an option that you see fit. Then try testing the new page scrolling in any app window by swiping up or down with two fingers on the trackpad. When you're happy with your choice, close Settings.

Wish you have a good experience with Windows 11!

You finished reading the article "**How to change the page scroll direction of the touchpad on Windows 11**" edited by the [TipsMake](#) team. We hope this article has provided you with many useful tech tips and tricks. You can search for similar articles on tips and guides. Thank you for reading and for following us regularly.
