

How to change the function of the Fn key on Windows 10 and 11

The function keys at the top of the keyboard act as shortcuts to control some hardware features. For instance, if you want to enable a backlit keyboard, they allow you to do so by pressing a single key without having to do the same thing through Windows.

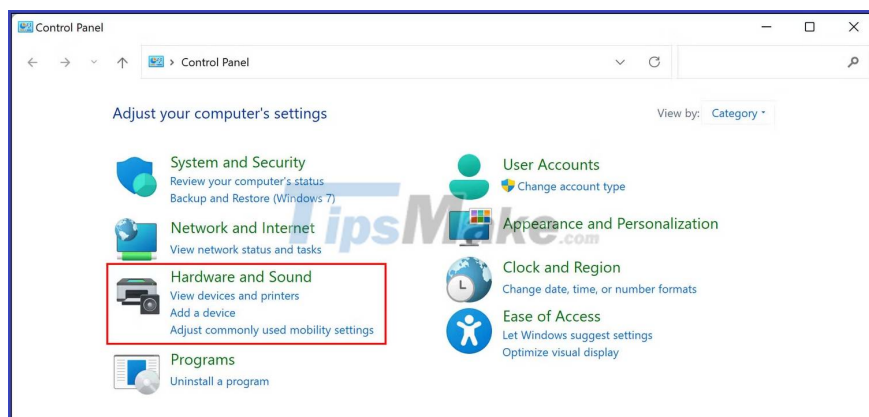
By default, these keys can only be used when you press the dedicated Fn key along with them. However, you can customize this setting, along with many others, to fit your needs. Here are the different ways you can modify the settings of the Windows 10 and 11 function keys.

1. How to change Fn key settings using Windows Mobility Center on Dell computers

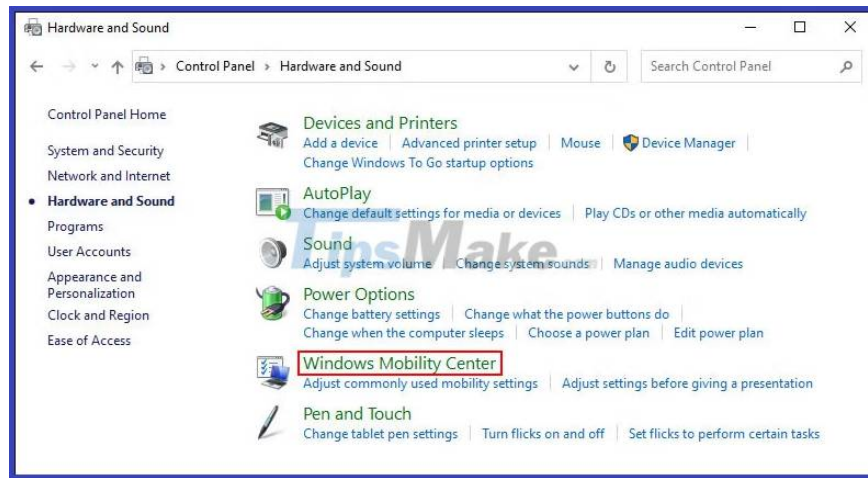
The easiest way to change the function keys is to modify the settings in Windows Mobility Center. However, this method will only work for Dell devices.

Here's how to proceed:

1. Type Windows Mobility Center in the Windows search and click **Open** .
2. Alternatively, launch the Control Panel and navigate to the **Hardware and Sound** section .



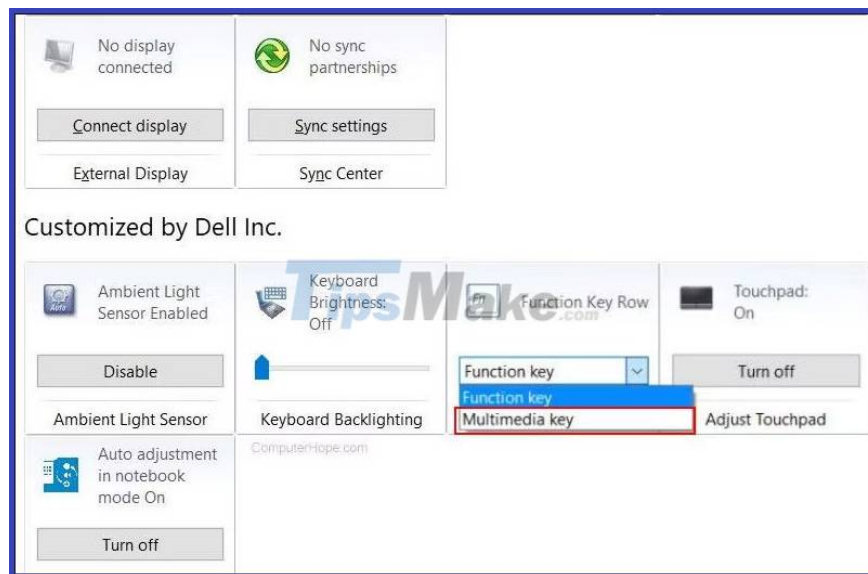
3. Click **Windows Mobility Center** .



4. In the next window, find the Fn key row section and expand the drop-down list below.

5. If you want to select the F keys for basic functions, select **Function key** .

6. Select **Multimedia key** if you want to use the F keys to perform functions that normally require pressing the Fn key.



If you own other devices, you can find similar options in the system or keyboard settings. You can also search the manufacturer's official website for information on such customizations.

2. How to modify the function key settings in BIOS

You can also make changes directly in the BIOS, helping the operating system and hardware load properly.

BIOS access steps in devices may vary. Below, the article will discuss the steps to access the BIOS and make the desired changes on HP and Acer machines. If you own another device, it's best to go to the manufacturer's website and look for the steps to access the BIOS there.

Follow these steps if you have an HP device:

1. First, turn off your PC.
2. Now restart the device and repeatedly press the **F10 key**. This will successfully boot the BIOS.
3. Navigate to the **System Configuration** menu > **Action Keys Mode** .
4. Use the **Enter** key to turn features on or off.
5. Click **Exit** to save the changes.

Similarly, if you have an Acer device, follow these steps:

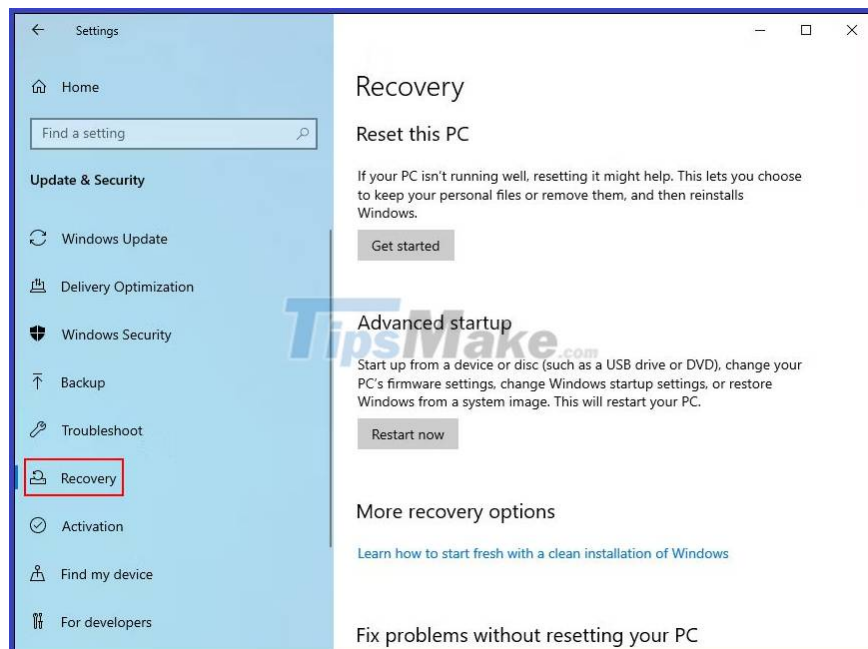
1. **Hold down the F2 key and the Power button at the same time.**
2. When you get to the BIOS screen, go to the **System Configuration** menu and press **Enter** in the Action Keys Mode option.
3. Select the desired mode and press **Exit**.

3. How to change the softkey settings using UEFI settings

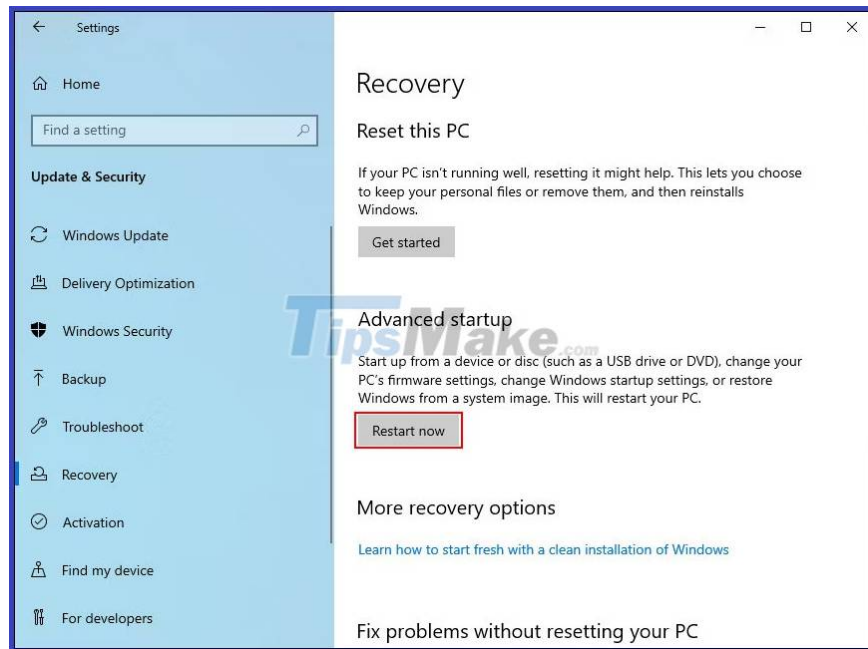
If you can't boot into BIOS for some reason, try changing the Fn keys with UEFI settings. UEFI is also basically BIOS, as it provides more and more powerful functionality.

Here's how you can boot into UEFI Settings if you're a Windows 10 user:

1. **Press the Win + I** keys to open Windows Settings.
2. Go to **Update & Security > Recovery** .

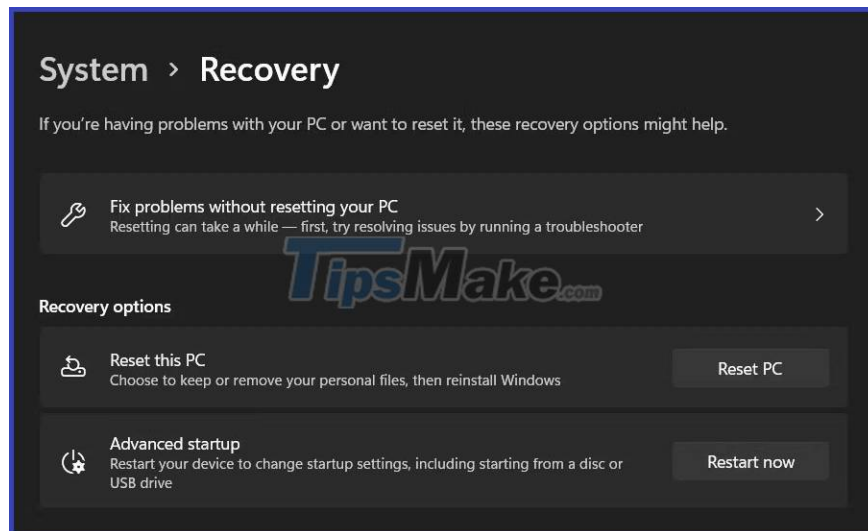


3. Select **Restart now** .



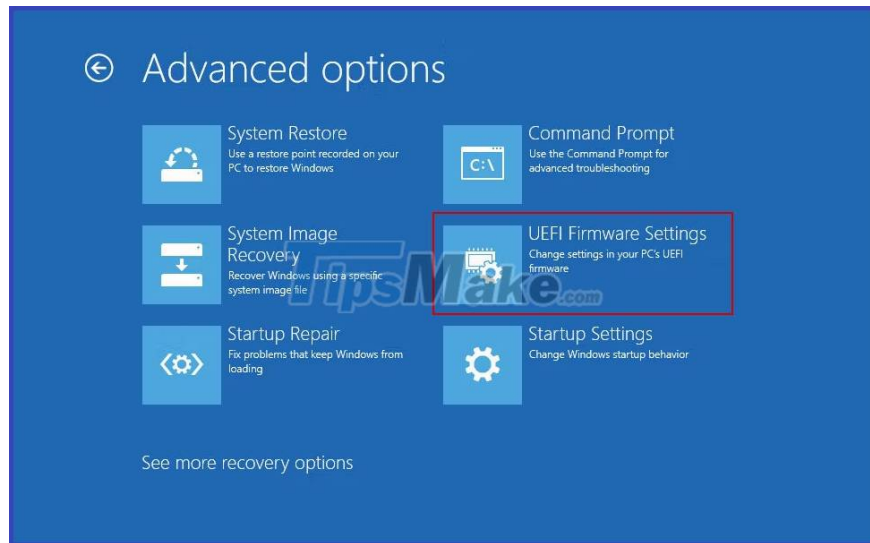
If you are a Windows 11 user, follow these steps:

1. **Press the Win + S** key combination to open the Windows Search utility.
2. Type **Recovery** in the search field and select **Recovery options** from the list of available options.
3. Finally, click **Restart now** associated with **Advanced startup**.



Once you have booted into the Windows Recovery Environment using these steps, continue with these steps:

1. In the next window, select **Troubleshoot**.
2. Click **UEFI Firmware Settings > Restart**.



3. In the following window, go to the **Configuration** tab .

4. Select **Hotkey Mode** and click **Enabled** or **Disabled** .



5. Click **Save** and then click **Exit** to log out of BIOS.

How to activate Fn lock

If you don't want to press the Fn key every time you want to turn on/off any of the 12 functions, you can turn on Fn lock. With this feature, the Fn key will always be held on the keyboard and you will be able to use any function key without having to press the Fn key first.

In most keyboards, the Fn lock is associated with the Esc key, but your device may be different. Usually, these keys have a lock symbol on them. You can use the manufacturer's website to look on your device if you can't find the key with the lock icon.

Once you've found it, hold down the Fn key and press the lock key to activate the function. You can follow the same steps to disable it in the future.

Function keys are great for improving productivity and efficiency. With the right techniques, you can get the most out of them. Hopefully following the steps above will allow you to modify the settings of the function keys to suit your needs. It's also important to note that all of the methods outlined above do not make permanent changes to the system, so you can always revert the changes if you want.

You finished reading the article "**How to change the function of the Fn key on Windows 10 and 11**" edited by the [TipsMake](#) team. We hope this article has provided you with many useful tech tips and tricks. You can search for similar articles on tips and guides. Thank you for reading and for following us regularly.