

# How to change the default Windows 10 font

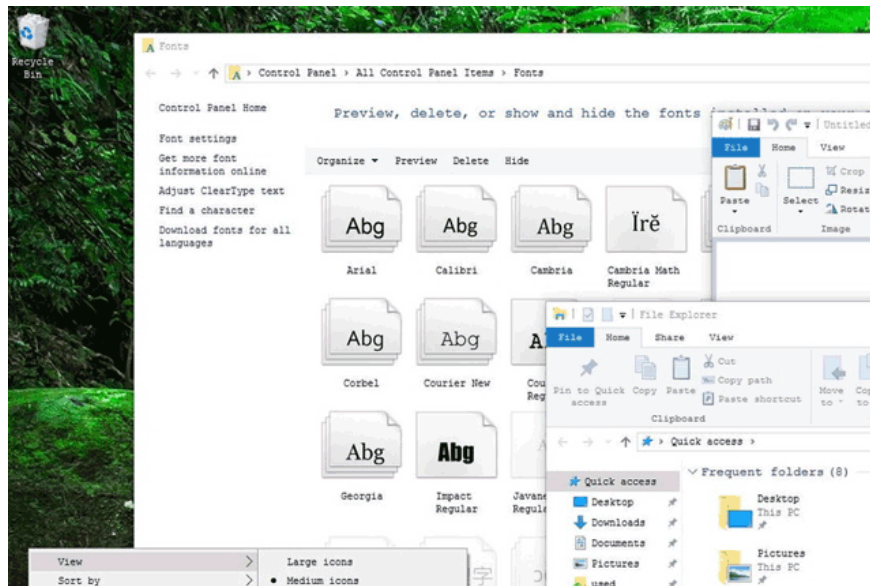
If you are bored with the default font on Windows 10, and you want to change to use a different font but do not know how to do it. On Windows 10, changing fonts is a bit complicated. So how to change the default font on Windows 10, please refer to the following article of Network Administrator.

If you are feeling "boring" with the default font on Windows 10, and you want to change it to use a different font but don't know how to do it. On Windows 7, you can easily change the system fonts available. However, on Windows 10, the change of font is not so simple. So how to change the default font on Windows 10, please refer to the following article of Network Administrator.

1. Instructions to download a huge free font set from Google, support Vietnamese

## Important note:

1. To edit the default font on Windows 10, all you need to do is edit the Registry. Therefore, before performing the following steps, you should perform a system backup to avoid a bad situation or you can create a system restore point.
2. Fonts like Webdings or Wingdings should not be selected because this is an icon font, which can cause errors on the system.

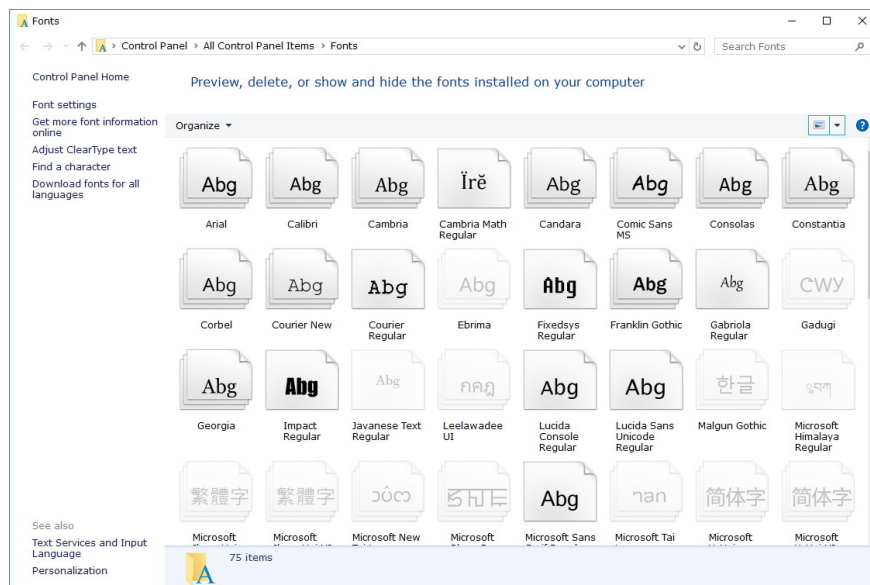


## How to change the default Windows 10 font

**Step 1:** Open Control Panel.

**Step 2:** On the Control Panel window, find and click **Fonts**.

**Step 3:** The font window available on Windows 10 appears, select the font you want to use.



**Step 4:** Open Notepad on your computer.

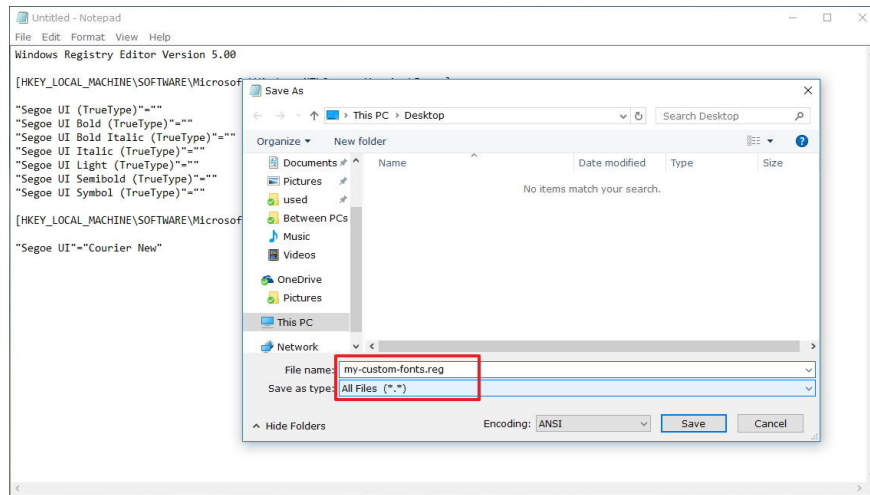
**Step 5:** Copy and paste the code below into Notepad:

```
Windows Registry Editor Version 5.00
[HKEY_LOCAL_MACHINE\SOFTWARE\Microsoft\Windows NT\CurrentVersion\Fonts]
"Segoe UI (TrueType)" = ""
"Segoe UI Bold (TrueType)" = ""
"Segoe UI Italic UI (TrueType)" = ""
"Segoe UI Italic (TrueType)" = ""
"Segoe UI Light (TrueType)" = ""
"Segoe UI Semibold (TrueType)" = ""
"Segoe UI Symbol (TrueType)" = ""
[HKEY_LOCAL_MACHINE\SOFTWARE\Microsoft\Windows NT\CurrentVersion\FontSubstitutes]
"Segoe UI" = "ENTER-NEW-FONT-NAME"
```

**Step 6:** In the above code, replace ENTER-NEW-FONT-NAME with the font name you want to use, such as Courier New.

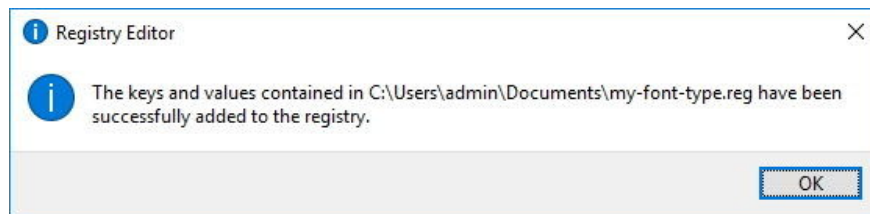
**Step 7:** Click File> Save As.

**Step 8:** At the Save as type section, select All Files and put any name for the file, remember the extension of the file you saved is .reg> Save.



**Step 9:** Double click on the .reg file you just saved to "add" to the Registry.

**Step 10:** Click Yes> OK



**Step 11:** Finally restart your computer to complete the process.

After your Windows 10 computer has finished booting, you will now see a new font on File Explorer, message dialogs, Taskbar and applications that use the system default font.

## How to reset the default font on Windows 10

After testing with a series of fonts, you are bored and want to return to the default font on Windows 10, please follow these steps:

**Step 1:** Open the Notepad file.

**Step 2:** Copy and paste the following Registry code into Notepad file:

```
Windows Registry Editor Version 5.00
[HKEY_LOCAL_MACHINESOFTWAREMicrosoftWindows NTCurrentVersionFonts]
"Segoe UI (TrueType)" = "segoeui.ttf"
"Segoe UI Black (TrueType)" = "seguibl.ttf"
"Segoe UI Black Italic (TrueType)" = "seguibli.ttf"
"Segoe UI Bold (TrueType)" = "segoeuib.ttf"
"Segoe UI Bold Italic (TrueType)" = "segoeuiiz.ttf"
"Segoe UI Emoji (TrueType)" = "seguiemj.ttf"
"Segoe UI Historic (TrueType)" = "seguihis.ttf"
"Segoe UI Italic (TrueType)" = "segoeuii.ttf"
```

```
"Segoe UI Light (TrueType)" = "segoeuil.ttf"  
"Segoe UI Light Italic (TrueType)" = "seguili.ttf"  
"Segoe UI Semibold (TrueType)" = "seguisb.ttf"  
"Segoe UI Semibold Italic (TrueType)" = "seguisbi.ttf"  
"Segoe UI Semilight (TrueType)" = "segoeuisl.ttf"  
"Segoe UI Semilight Italic (TrueType)" = "seguisli.ttf"  
"Segoe UI Symbol (TrueType)" = "seguisym.ttf"  
"Segoe MDL2 Assets (TrueType)" = "segmdl2.ttf"  
"Segoe Print (TrueType)" = "segoepr.ttf"  
"Segoe Print Bold (TrueType)" = "segoeprb.ttf"  
"Segoe Script (TrueType)" = "segoesc.ttf"  
"Segoe Script Bold (TrueType)" = "segoescb.ttf"  
[HKEY_LOCAL_MACHINESOFTWAREMicrosoftWindows NTCurrentVersionFontSubstitutes]  
"Segoe UI" = -
```

**Step 3:** Click File> Save As

**Step 4:** At the Save as type section, select All Files and name the file, remember the extension of the file you saved is .reg> **Save.**

**Step 5:** Double click on the .reg file you just saved to "add" to the Registry.

**Step 6:** Click Yes> OK

**Step 7:** Finally restart your computer to complete the process.

Refer to some of the following articles:

1. Instructions from AZ how to install Windows 10 on Mac
1. How to activate Ctrl + C / Ctrl + V to execute paste command in Command Prompt window?
1. Instructions to turn off ads on the Screen Lock screen Windows 10

Good luck!

You finished reading the article "**How to change the default Windows 10 font**" edited by the [TipsMake](#) team. We hope this article has provided you with many useful tech tips and tricks. You can search for similar articles on tips and guides. Thank you for reading and for following us regularly.