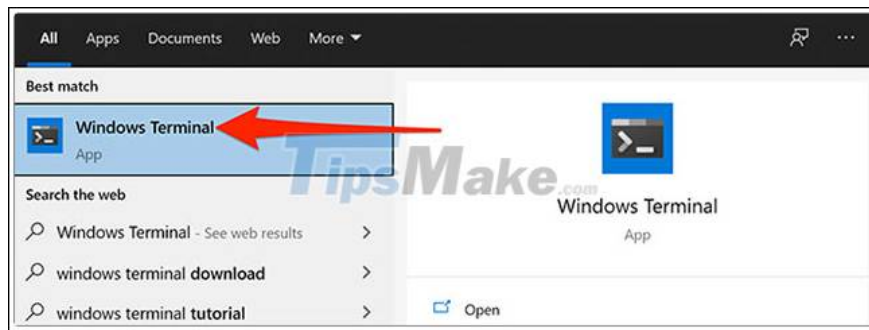


How to change the default shell in Windows Terminal

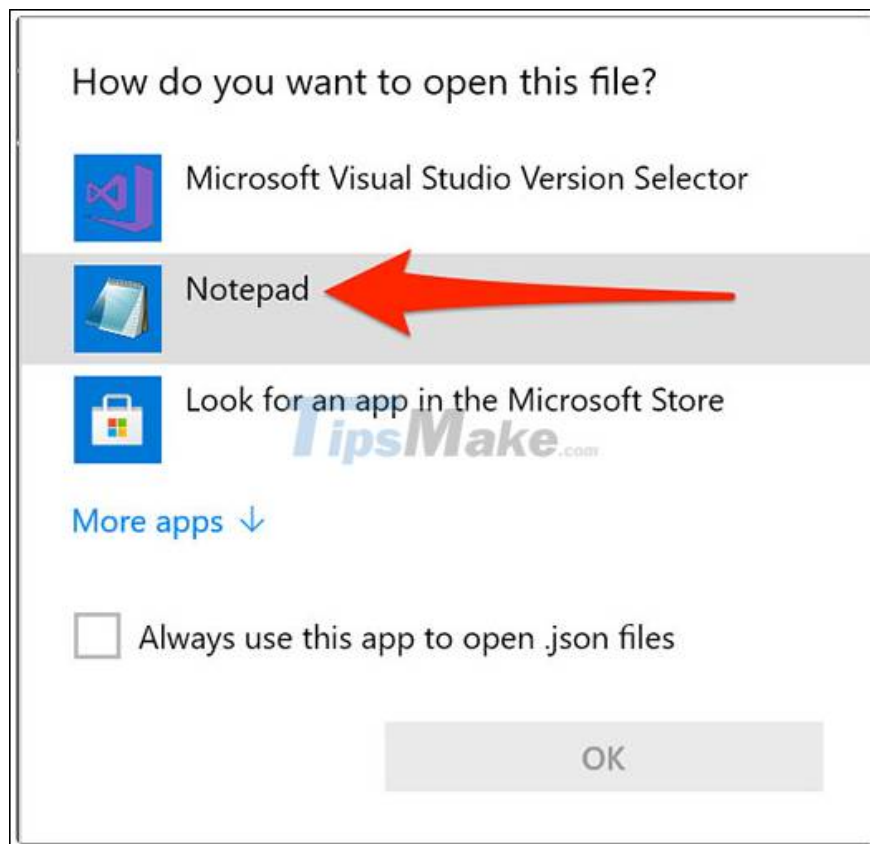
Normally, when you open Windows Terminal, PowerShell will launch as the default shell. However, if you want, you can optionally change this default shell to something of your liking, such as Command Prompt or Ubuntu (Linux).

You may not know it, but there is a piece of code in the settings file of Windows Terminal that decides which shell to open first (the default shell). Thus, by customizing this code, you can change the default shell attached to Windows Terminal, including Command Prompt, Ubuntu (Linux) or Azure Cloud Shell.

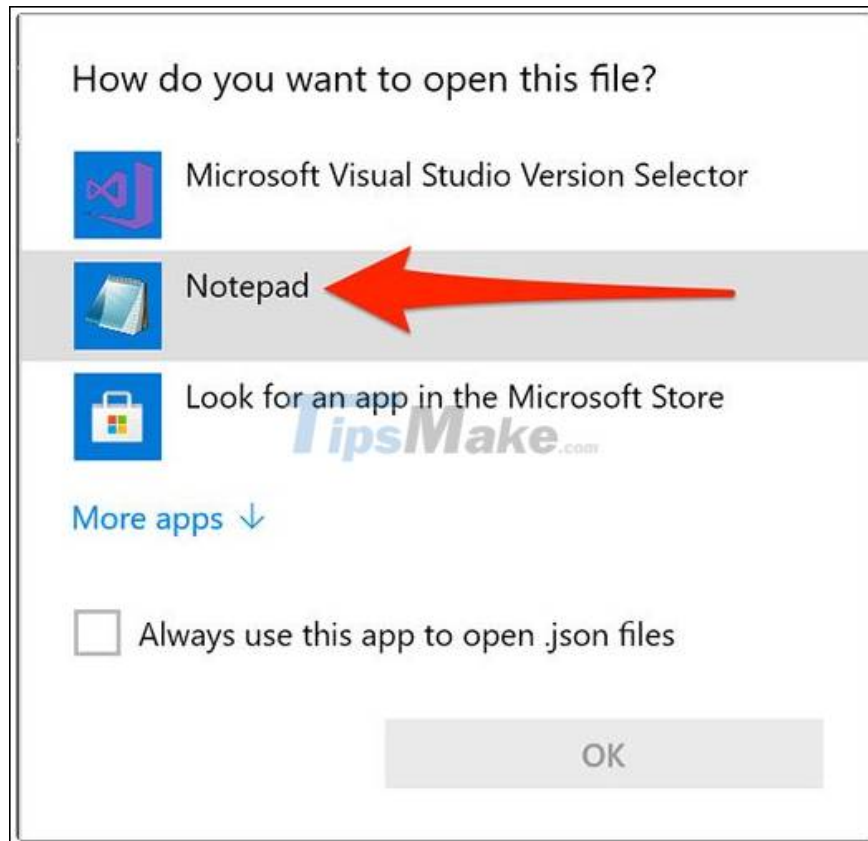
To get started, open the 'Start' menu, search for 'Windows Terminal' and click on the corresponding application in the results.



Next, click the down arrow icon at the top of the Windows Terminal window, then select 'Settings'.



Windows will ask you with which application you want to open the settings file. You can choose any code (or plain text) editor from the list, but we recommend using Notepad for simplicity. Please click 'Notepad' in the list and press 'OK'.



When the settings file opens in Notepad, scroll to the shell section that you want to set as default. There is a heading at the top of each section that tells what each particular shell is used for.

For example, the section of PowerShell says 'Make changes here to the powershell.exe profile'. Similarly, the section of the Command Prompt says 'Make changes here to the cmd.exe profile'. The part of Ubuntu has the keyword 'Ubuntu' to the right of the 'name'.

Now copy the text next to 'guid' in the shell you want to select. You don't need to copy both the quotes. Just copy the text inside the quotes, as shown below:

```
{
  // Make changes here to the powershell.exe profile.
  "guid": "{61c54bbd-c2c6-5271-96e7-009a87ff44bf}",
  "name": "Windows PowerShell",
  "commandline": "powershell.exe",
  "hidden": false
},
{
  // Make changes here to the cmd.exe profile.
  "guid": "{0c5aa0dad-35be-5f56-a8ff-afceeeaa6101}",
  "name": "Command Prompt",
  "commandline": "cmd.exe",
  "hidden": false
},
{
  "guid": "{2c4de342-38b7-51cf-b940-2309a097f518}",
  "hidden": false,
  "name": "Ubuntu",
  "source": "Windows.Terminal.Wsl"
}
```

Next, you scroll to the top of the settings file and find the 'defaultProfile' text field. Delete the text next to this field and paste the text you copied above here by pressing Ctrl + V.

```
*settings.json - Notepad
File Edit Format View Help
// This file was initially generated by Windows Terminal 1.6.10571.0
// It should still be usable in newer versions, but newer versions might have additional
// settings, help text, or changes that you will not see unless you clear this file
// and let us generate a new one for you.

// To view the default settings, hold "alt" while clicking on the "Settings" button.
// For documentation on these settings, see: https://aka.ms/terminal-documentation
{
  "$schema": "https://aka.ms/terminal-profiles-schema",
  "defaultProfile": "{0caa0dad-35be-5f56-a8ff-afceeeaa6101}",
  // You can add more global application settings here.
  // To learn more about global settings, visit https://aka.ms/terminal-global-settings

  // If enabled, selections are automatically copied to your clipboard.
  "copyOnSelect": false,
}
```

Now, click File > Save in Notepad to save the changes.

```
*settings.json - Notepad
File Edit Format View Help
// This file was initially generated by Windows Terminal 1.6.10571.0
// It should still be usable in newer versions, but newer versions might have additional
// settings, help text, or changes that you will not see unless you clear this file
// and let us generate a new one for you.

// To view the default settings, hold "alt" while clicking on the "Settings" button.
// For documentation on these settings, see: https://aka.ms/terminal-documentation
{
  "$schema": "https://aka.ms/terminal-profiles-schema",
  "defaultProfile": "{0caa0dad-35be-5f56-a8ff-afceeeaa6101}",
  // You can add more global application settings here.
  // To learn more about global settings, visit https://aka.ms/terminal-global-settings

  // If enabled, selections are automatically copied to your clipboard.
  "copyOnSelect": false,
}
```

The shell you selected now becomes the default shell in Windows Terminal.

You finished reading the article "**How to change the default shell in Windows Terminal**" edited by the [TipsMake](#) team. We hope this article has provided you with many useful tech tips and tricks. You can search for similar articles on tips and guides. Thank you for reading and for following us regularly.