

How to change the underline color of Word spell check

Windows uses blue and red to display spelling errors in Word. If you want to change the underline color of the spelling check in Word, follow the article below.

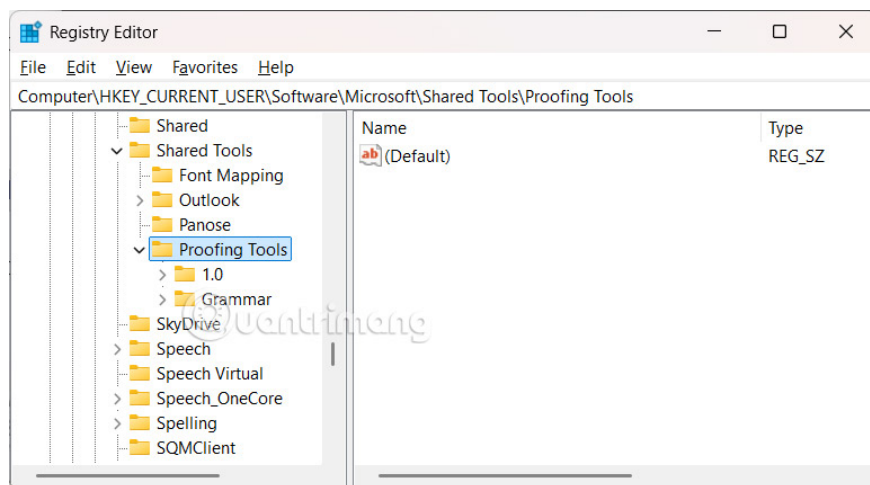
Windows uses blue and red to indicate spelling errors in Word . With Windows 365, you can choose spelling underline colors like purple for contextual corrections. All these options are coded in the program and are not visible on the Options screen. In case you want to change the spelling underline color in Word, follow the article below.

Change underline color of Word spell check using Registry Editor

Step 1:

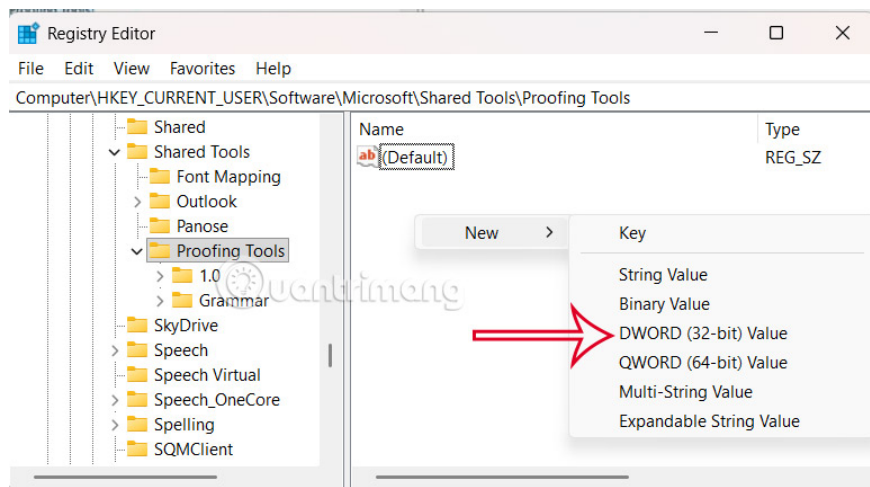
First, open the Registry Editor interface and then access the path below.

Computer\HKEY_CURRENT_USER\Software\Microsoft\Shared Tools\Proofing Tools

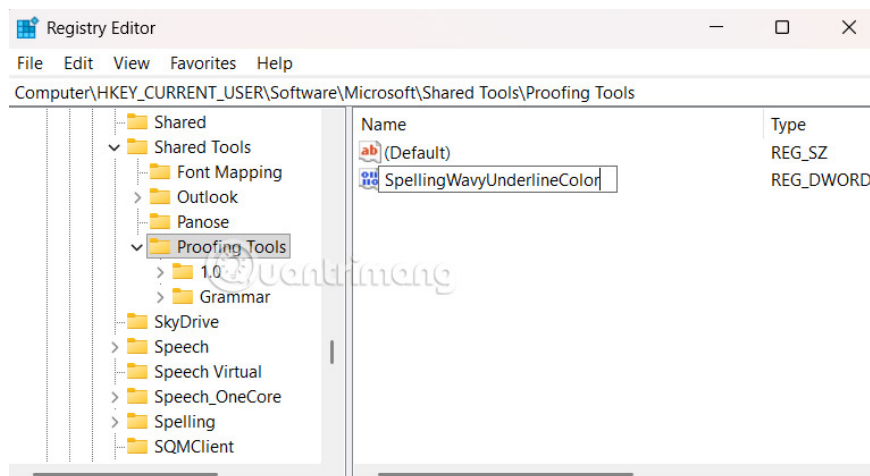


Step 2:

In the right pane, right-click on the blank space in the pane and select **New** then select **DWORD Value** .



Enter **SpellingWavyUnderlineColor** as the name for the value.

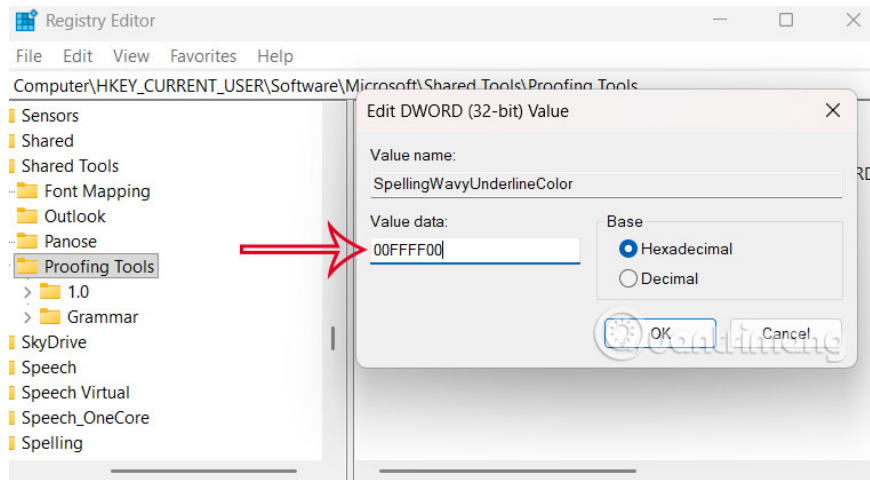


Step 3:

Double-click the SpellingWavyUnderlineColor value , then select Hexadecimal . Now you need to enter the RGB color you want to change into Value data and then click OK. This value will change the underline color of the spelling check in Word.

You can refer to the color code table in the article below.

1. Standard color code table for programmers and designers



You continue to create the following values ??with the above operations.

1. GrammarWavyUnderlineColor: change the color of underlined grammar errors.
2. ContextualSpellingWavyUnderlineColor: change the underline color of spelling differences based on context.

Finally restart your computer for the changes to take effect.

You finished reading the article "**How to change the underline color of Word spell check**" edited by the [TipsMake](#) team. We hope this article has provided you with many useful tech tips and tricks. You can search for similar articles on tips and guides. Thank you for reading and for following us regularly.