

How to change screen orientation in Windows 10

In Windows 10, you can change the screen orientation to horizontal, vertical, horizontal (flip backwards) or vertical (flip backward). This tutorial will show you how to change the screen orientation in Windows 10.

In Windows 10, you can change the screen orientation to horizontal, vertical, horizontal (flip backwards) or vertical (flip backward).

A tablet and 2-in-1 devices are designed to automatically rotate the screen vertically or horizontally, when you rotate it to see what's displayed on the screen.

This tutorial will show you how to change the screen orientation in Windows 10.

Change the display orientation by rotating the screen

Note : This option will only be available for tablets and 2-in-1 devices

If you turn on **Rotation Lock** , the display direction will not change when you rotate the screen.

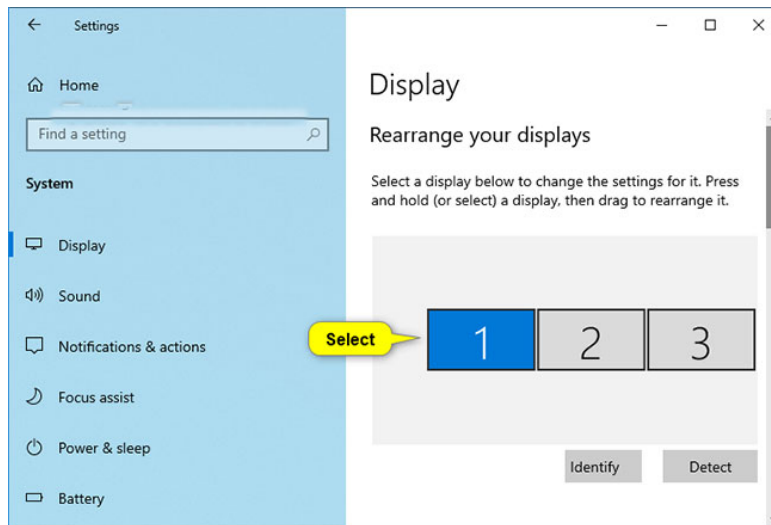
Just manually rotate the screen to change the horizontal or vertical orientation you want.

Change the direction in the Settings section

1. Open **Settings** and click on the **System** icon .
2. Click **Display** on the left side.
3. If you have multiple monitors connected to the PC, select the screen you want to rotate.

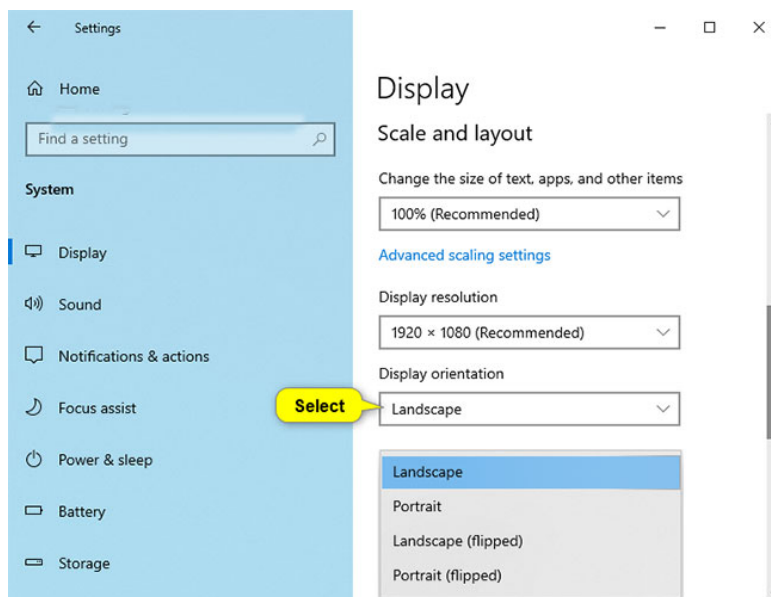
Note : If all screens are not displayed, click the **Detect** link to see if Windows can find it.

If you're not sure which screen belongs to, then you can click the **Identify** link to get a quick look at the screen's number.



Select the screen you want to rotate

4. Choose **Landscape** (default), **Portrait**, **Landscape (flipped)** or **Portrait (flipped)** in the **Display orientation** menu for what you want.



Choose Landscape (default), Portrait, Landscape (flipped) or Portrait (flipped)

5. If the selected screen orientation looks good, click **Keep changes**. If not, you can click **Revert** to return to the previous direction.

Note : You will have 15 seconds (time may vary) to click **Keep changes** or **Revert** before Windows automatically rotates back to the previous direction.

This can be helpful if the changes you make prevent you from seeing this dialog.

Keep these display settings?

Reverting to previous display settings in 13 seconds.

Keep changes

Revert

You will have 15 seconds to click Keep changes or Revert

6. When done, you can close the **Settings** if desired.

Changes in the NVIDIA Control Panel

This option will only be available if your PC has NVIDIA graphics with NVIDIA driver installed.

1. Right-click or press and hold on the screen and click **NVIDIA Control Panel** .

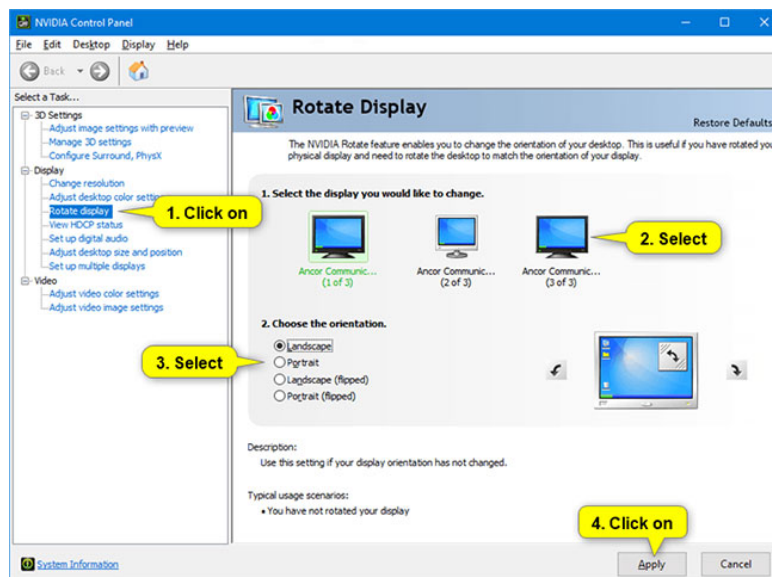
2. Perform the following actions in the **NVIDIA Control Panel** .

A) Click **Rotate display** in **Display** in the left panel.

B) If you have multiple screens, select the screen you want to change direction.

C) Choose **Landscape** (default), **Portrait**, **Landscape (flipped)** or **Portrait (flipped)** in **Choose the orientation** for what you want.

D) Click **Apply**.

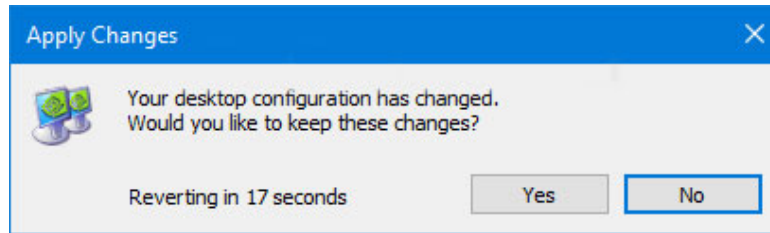


Go to the NVIDIA Control Panel

3. If the selected direction looks good, click **Yes**. If not, you can click **No** to return to the previous display.

Note : You will have 20 seconds (the time may vary) to click **Yes** or **No** before Windows will automatically return to the previous display.

This can be helpful if the changes you make prevent you from seeing this dialog.



If the selected direction looks good, click Yes

4. When done, you can close the **NVIDIA Control Panel** if desired.

You finished reading the article "**How to change screen orientation in Windows 10**" edited by the [TipsMake](#) team. We hope this article has provided you with many useful tech tips and tricks. You can search for similar articles on tips and guides. Thank you for reading and for following us regularly.