

How to change / restore Music folder icon in Windows

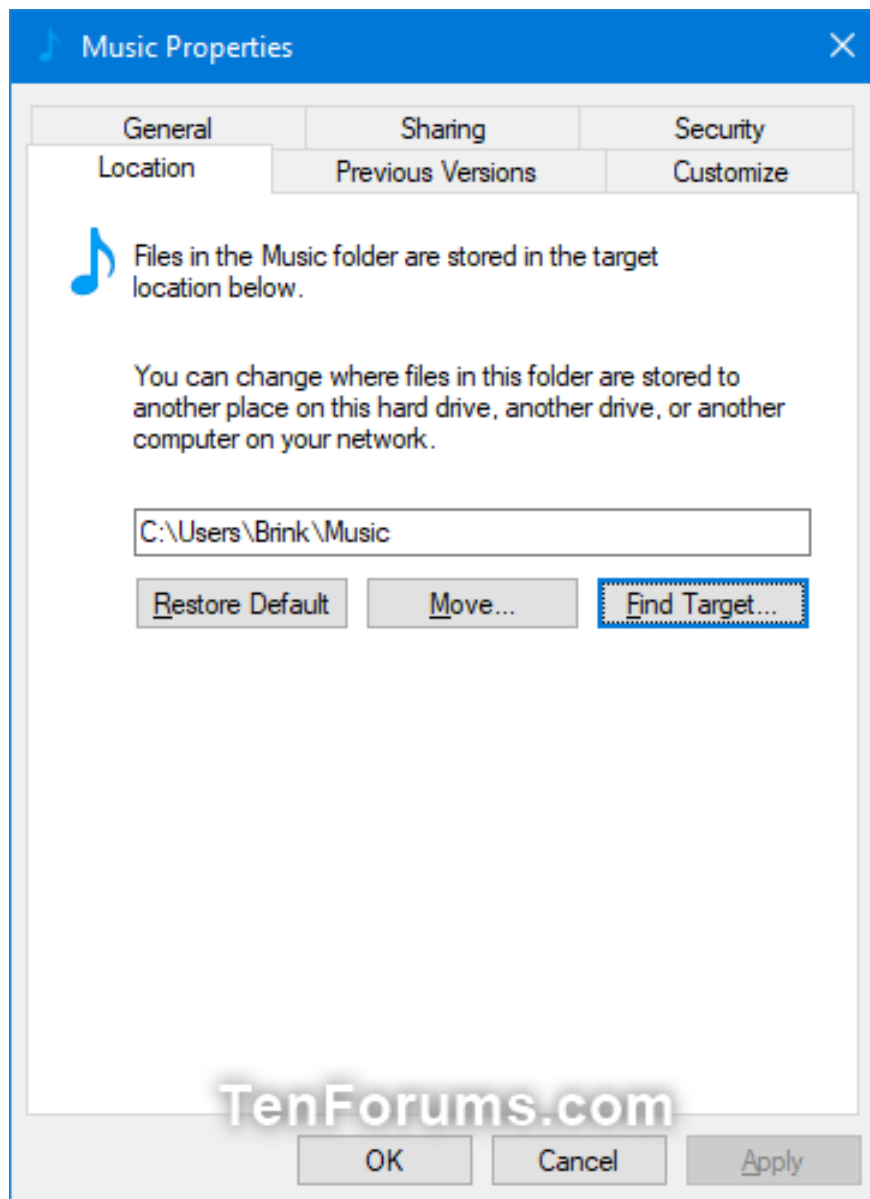
This tutorial will show you how to change or restore the default Music folder icon for your account in Windows.

By default, the personal Music folder is located in the **% UserProfile%** folder (for example, "**C: UsersBrink** ") of the account.

This guide will show you how to change or restore the default Music folder icon for your account in Windows 7, Windows 8 and Windows 10.

Change the Music folder icon in Properties

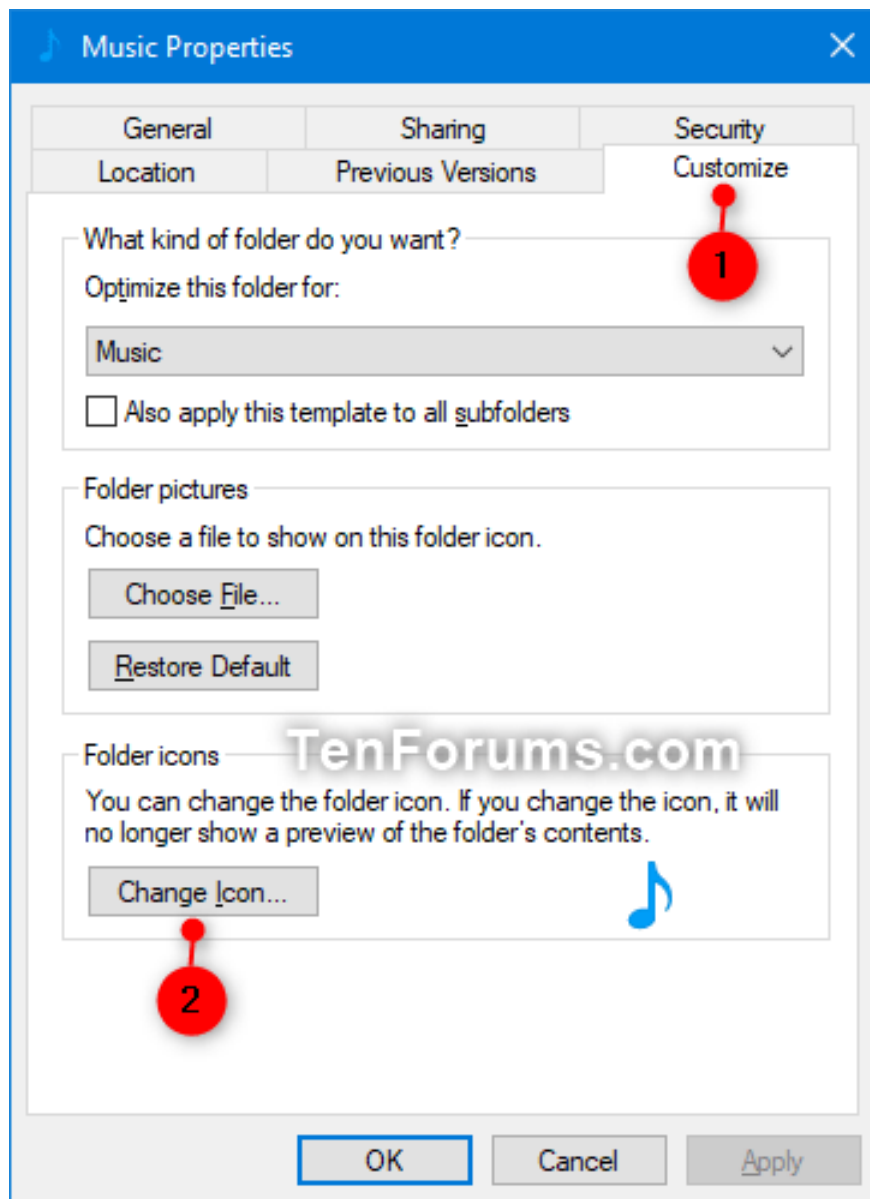
1. Open the current location of the **Music** folder (eg "**C: UsersBrink** ") in File Explorer (Win+ E).



Open the current location of the Music folder

2. Right-click or hold and hold the **Music** folder and click **Properties**.

3. Click the **Customize** tab and click the **Change Icon** button .

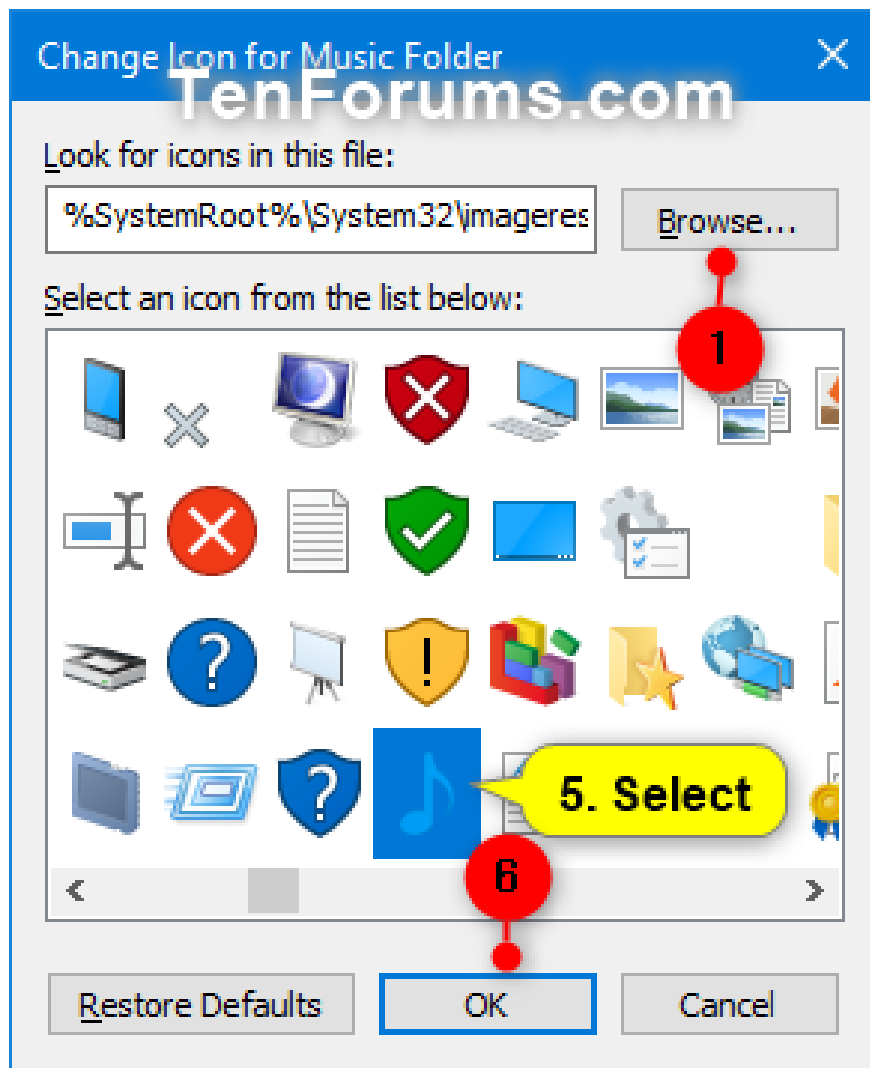


Click the Customize tab and click the Change Icon button

4. Follow the steps below to select an icon:

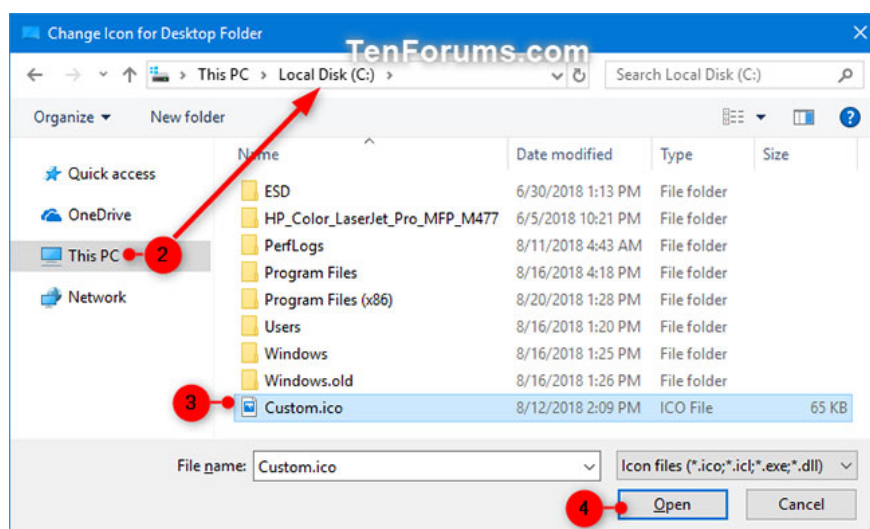
Note : The % SystemRootSystem32shell32.dll and % SystemRootSystem32imageres.dll files contain most of the Windows default icons.

1. Click the **Browse** button .



Click the Browse button

1. Navigate to and select the symbol library (e.g., .dll) or the .ico file you want to use and click **Open**.



Select the icon library or the .ico file you want to use

1. Select the symbol you want to use and click **OK**.

5. Click **OK** to apply the changes.

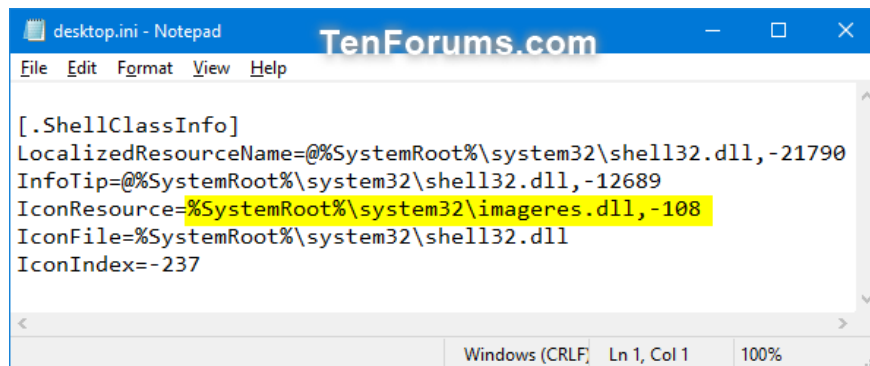
Change the Music folder icon in the desktop.ini file

1. Press the Win+ keys R to open **Run** , copy and paste **% UserProfile% Musicdesktop.ini** into **Run** , then click **OK** to open the file.

Note : If you have changed the default location of the **Music** folder, then you will need to replace **% UserProfile% Music** in the path above with the actual full path corresponding to the current location of the **Music** folder .

2. In the **IconResource** = line in the desktop.ini window, change the path to the full path of the icon you want to use.

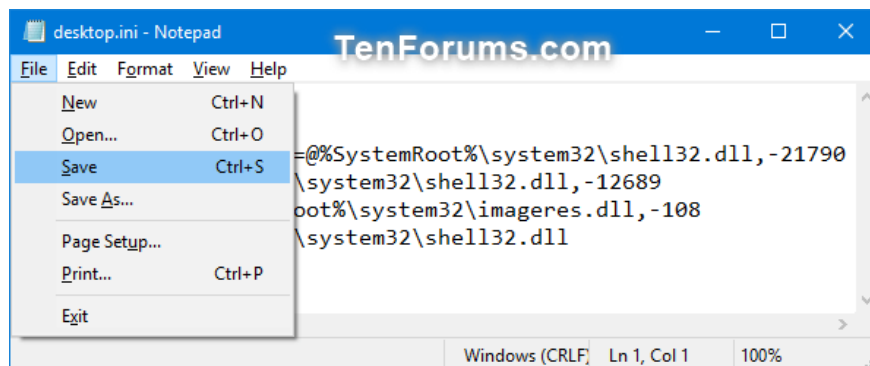
Note : If there is no line **IconResource** = , then you will need to add it.



```
desktop.ini - Notepad
File Edit Format View Help
[.ShellClassInfo]
LocalizedResourceName=@%SystemRoot%\system32\shell32.dll,-21790
InfoTip=@%SystemRoot%\system32\shell32.dll,-12689
IconResource=%SystemRoot%\system32\imageres.dll,-108
IconFile=%SystemRoot%\system32\shell32.dll
IconIndex=-237
Windows (CRLF) Ln 1, Col 1 100%
```

Change to the full path of the icon you want to use

3. Click **File** (menu bar), click **Save** (Ctrl+ S) and close the desktop.ini window.



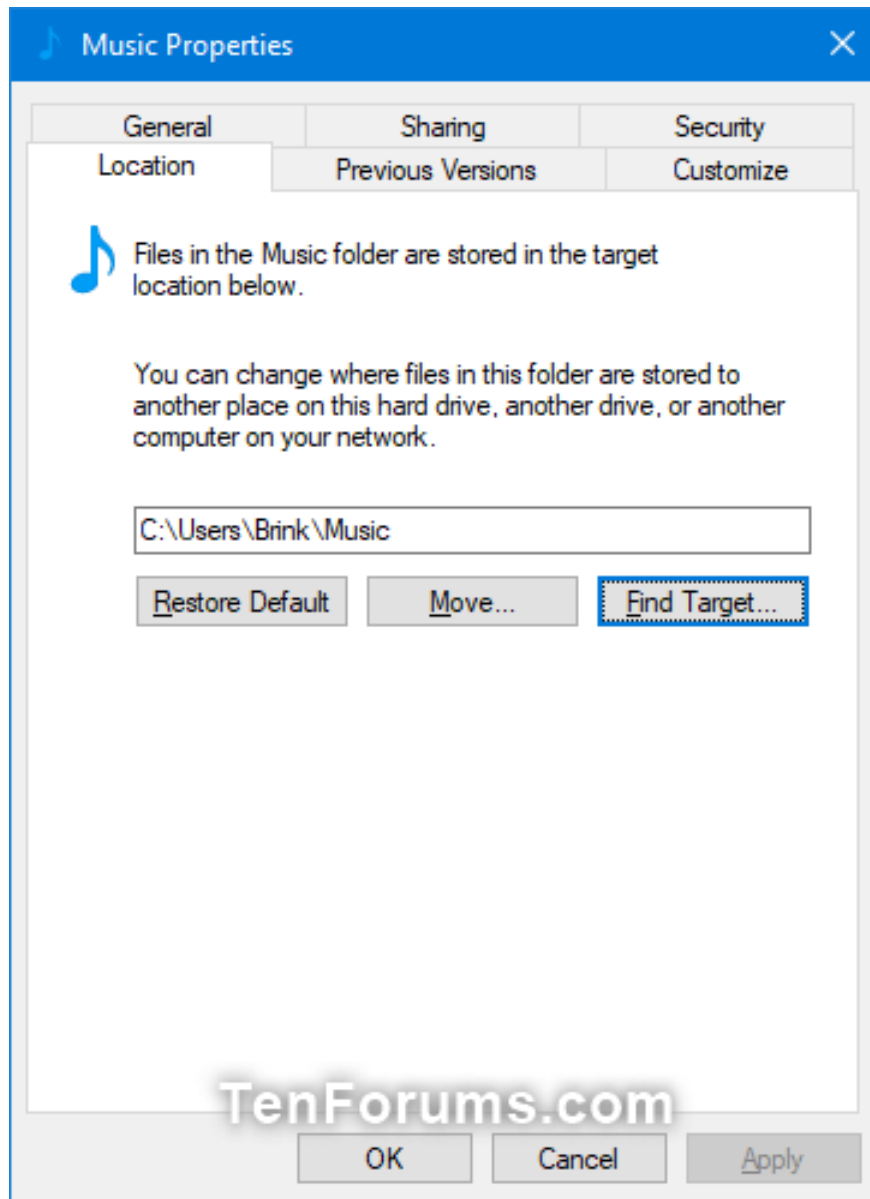
```
desktop.ini - Notepad
File Edit Format View Help
New Ctrl+N
Open... Ctrl+O
Save Ctrl+S
Save As...
Page Setup...
Print... Ctrl+P
Exit
=@%SystemRoot%\system32\shell32.dll,-21790
\system32\shell32.dll,-12689
oot%\system32\imageres.dll,-108
\system32\shell32.dll
Windows (CRLF) Ln 1, Col 1 100%
```

Save and close the desktop.ini window

4. Restart the explorer or logout process and log in to apply the changes.

Restore default Music folder icon in Properties

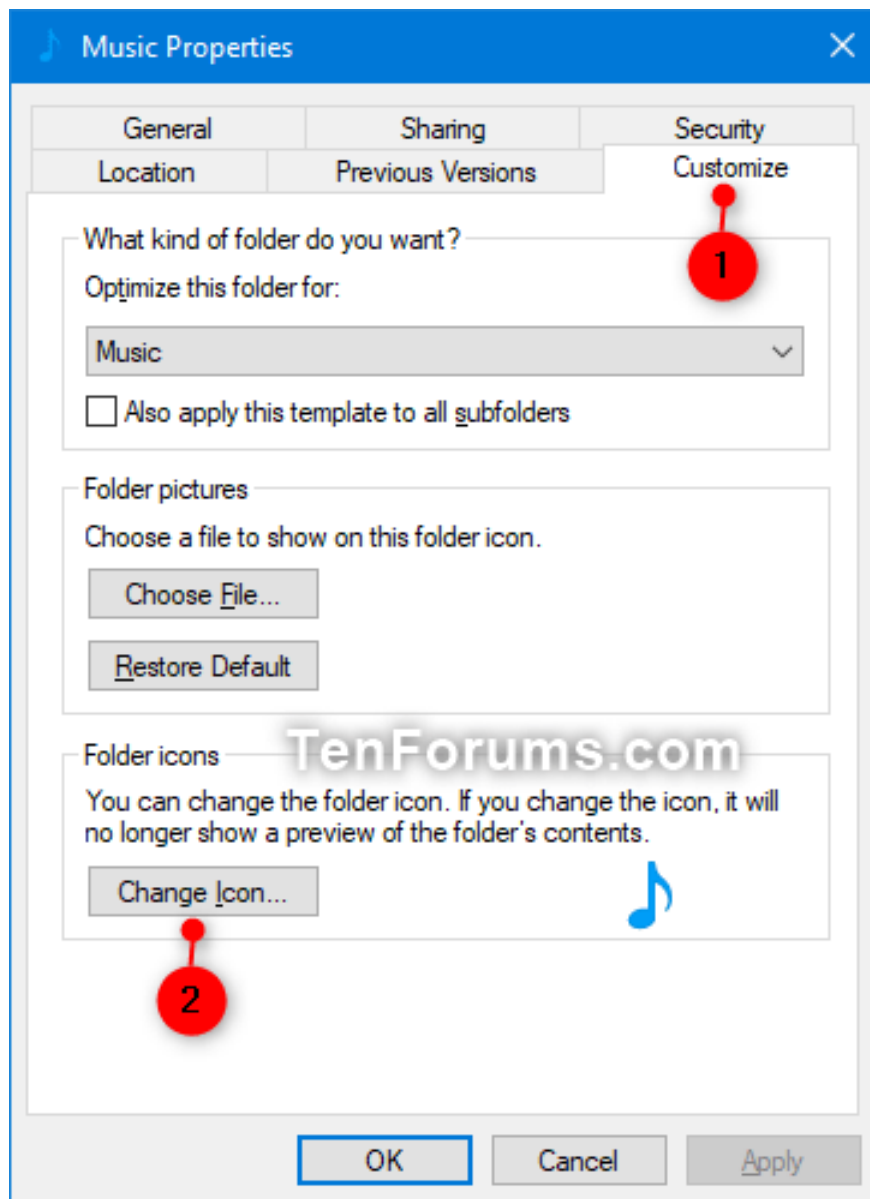
1. Open the current location of the **Music** folder (eg " **C: UsersBrink** ") in File Explorer.



Open the Music folder in File Explorer

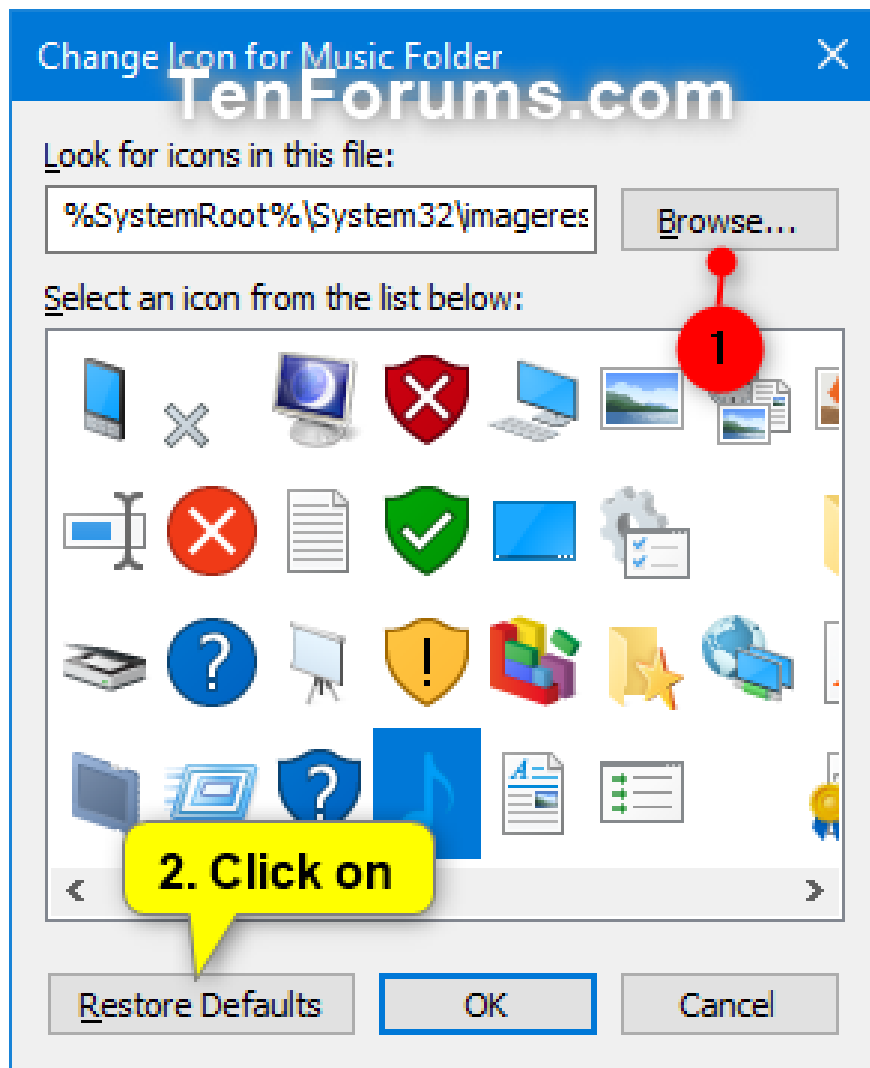
2 Right-click or hold and hold the **Music** folder and click **Properties**.

3. Click the **Customize** tab and click the **Change Icon** button .



Click the Customize tab

4. Click the **Restore Defaults** button .



Click the Restore Defaults button
5. Click **OK** to apply the changes.

Restore default Music folder icon in desktop.ini file

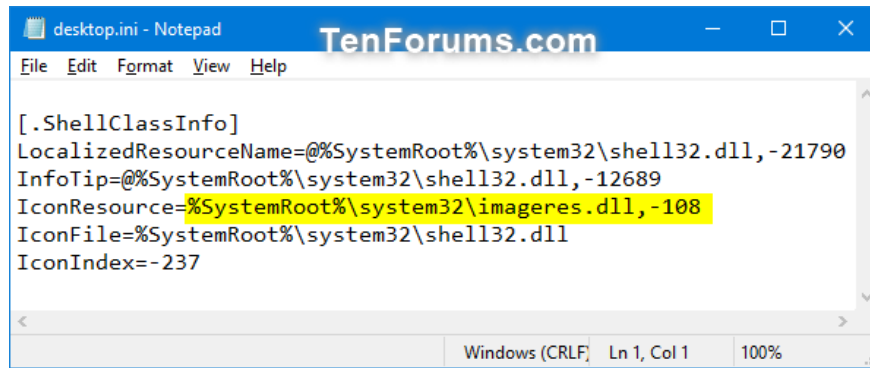
1. Press the Win+ keys R to open **Run** , copy and paste **% UserProfile% Musicdesktop.ini** into **Run** and click **OK** to open the file.

Note : If you have changed the default location of the Music folder, then you will need to replace **% UserProfile% Music** in the path above with the actual full path corresponding to the current location of the Music folder.

2. On the **IconResource** = line in the desktop.ini window, change the full path to:

```
%SystemRoot%system32imageres.dll,-108
```

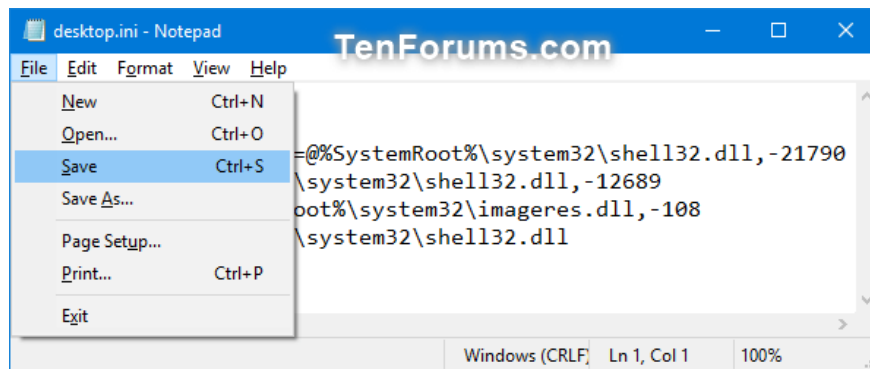
Note : If there is no line **IconResource** = , then you will need to add it.



```
desktop.ini - Notepad
TenForums.com
File Edit Format View Help
[.ShellClassInfo]
LocalizedResourceName=@%SystemRoot%\system32\shell32.dll,-21790
InfoTip=@%SystemRoot%\system32\shell32.dll,-12689
IconResource=%SystemRoot%\system32\imageres.dll,-108
IconFile=%SystemRoot%\system32\shell32.dll
IconIndex=-237
Windows (CRLF) Ln 1, Col 1 100%
```

Change the path on the line `IconResource =` in the `desktop.ini` window

3. Click **File** (menu bar), click **Save** (`Ctrl+S`) and close the `desktop.ini` window.



```
desktop.ini - Notepad
TenForums.com
File Edit Format View Help
New Ctrl+N
Open... Ctrl+O
Save Ctrl+S
Save As...
Page Setup...
Print... Ctrl+P
Exit
=@%SystemRoot%\system32\shell32.dll,-21790
\system32\shell32.dll,-12689
oot%\system32\imageres.dll,-108
\system32\shell32.dll
Windows (CRLF) Ln 1, Col 1 100%
```

Click `File > Save`

4. Restart the explorer or logout process and log in to apply.

You finished reading the article "**How to change / restore Music folder icon in Windows**" edited by the [TipsMake](#) team. We hope this article has provided you with many useful tech tips and tricks. You can search for similar articles on tips and guides. Thank you for reading and for following us regularly.