

How to change or restore Desktop folder icon in Windows

This guide will show you how to change or restore default Desktop folder icon for your account in Windows 7, Windows 8 and Windows 10.

Desktop is the main screen area you see after turning on your PC and logging into Windows. When you open an app or folder, they appear on the desktop. You can also place items on the desktop, such as files, folders, and shortcuts, and organize them however you want.

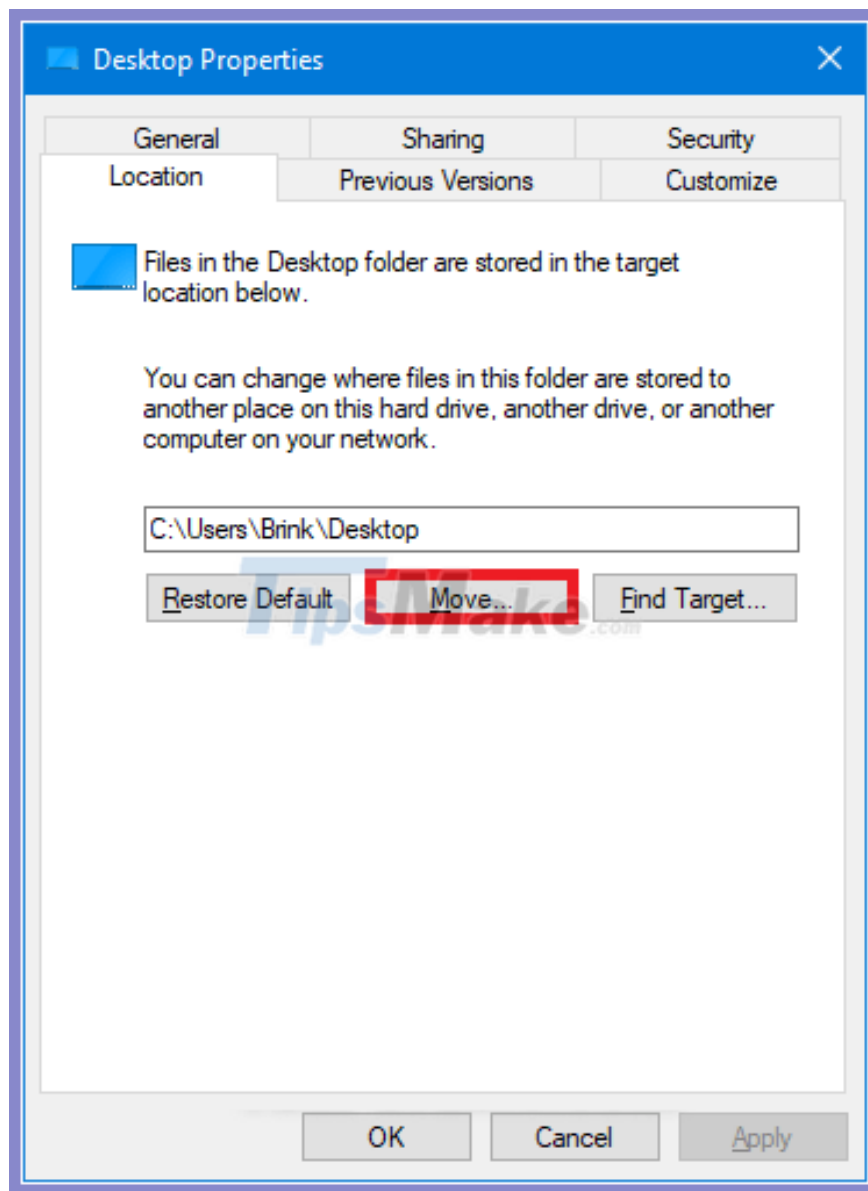
By default, the personal Desktop folder is located in the **% UserProfile%** folder (eg " **C: UsersBrink** ") in your account.

This guide will show you how to change or restore default Desktop folder icon for your account in Windows 7, Windows 8 and Windows 10.

Change the Desktop folder icon in Properties

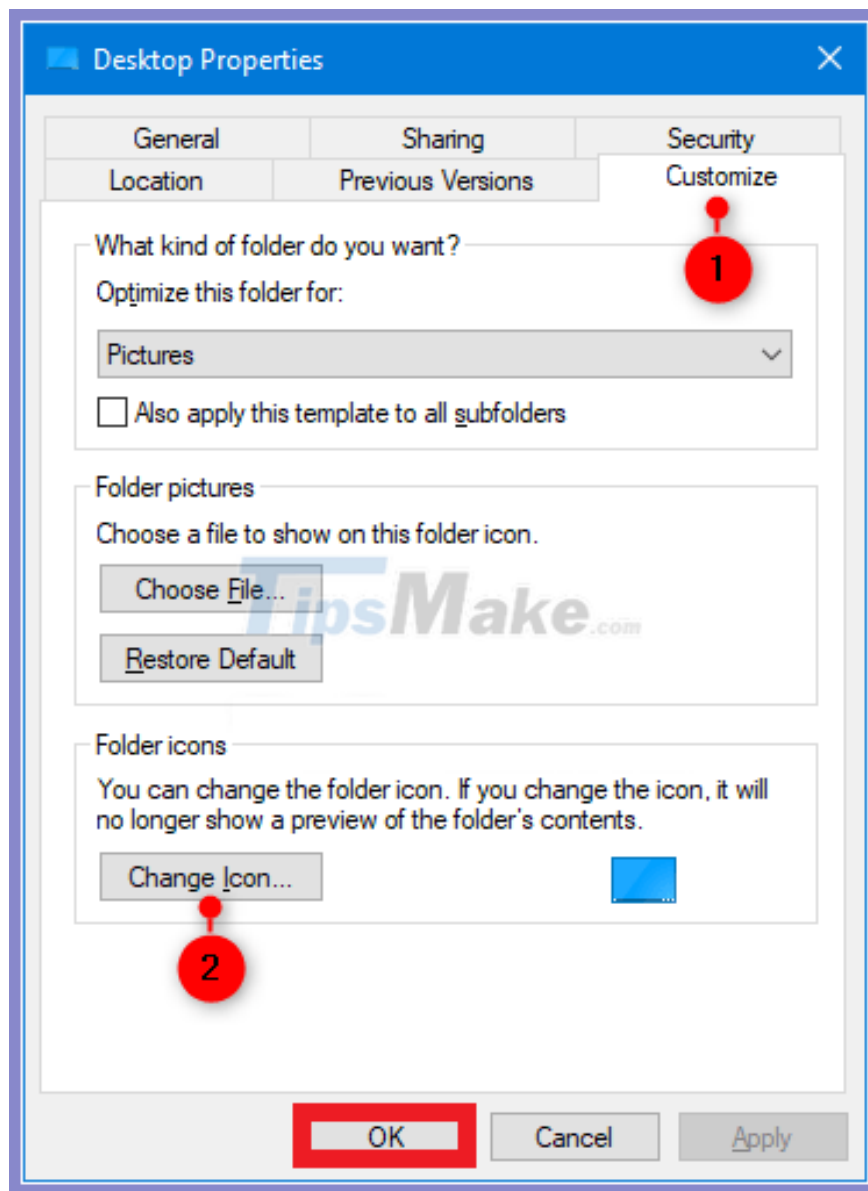
Step 1. If not, you will need to add the **Customize** tab to Desktop folder properties.

Step 2. Open the current location of the Desktop folder (eg " **C: UsersBrink** ") in **File Explorer** (**Win + E**).



Step 3. Right-click or click and hold on the Desktop folder and click **Properties**.

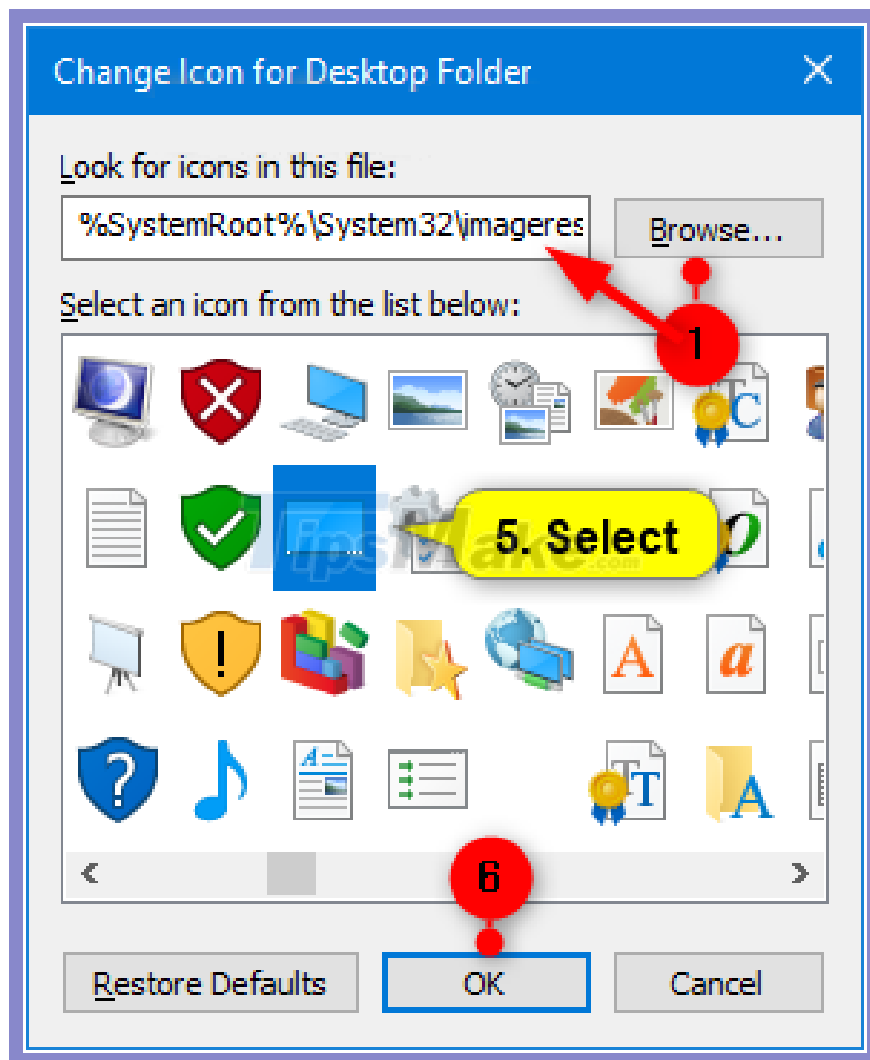
Step 4. Click the **Customize** tab and click the **Change Icon** button .



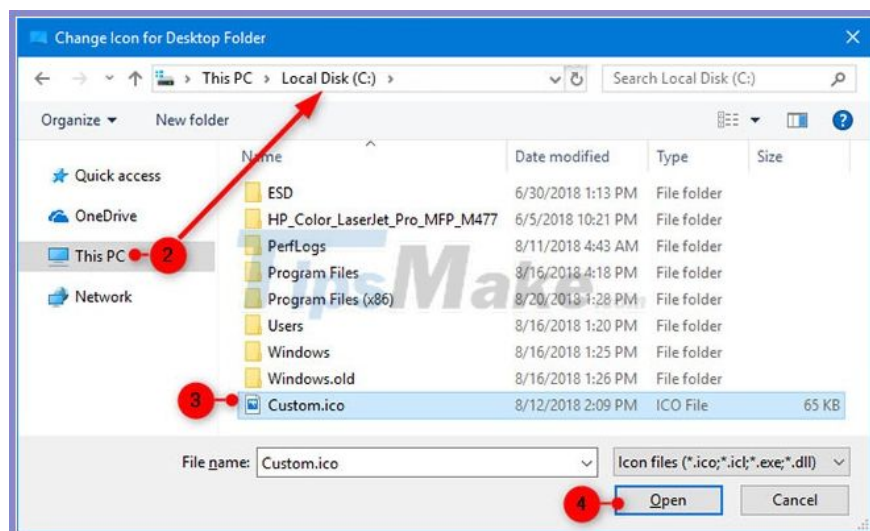
5. Follow the steps below to select an icon:

The files **% SystemRootSystem32shell32.dll** and **% SystemRootSystem32imageres.dll** contain most of the default Windows icons.

1. Click the **Browse** button .
2. Navigate to and select the icon library (e.g. .dll) or the .ico file you want to use and click **Open**.
3. Select the icon you want to use and click **OK**.



Click the Browse button



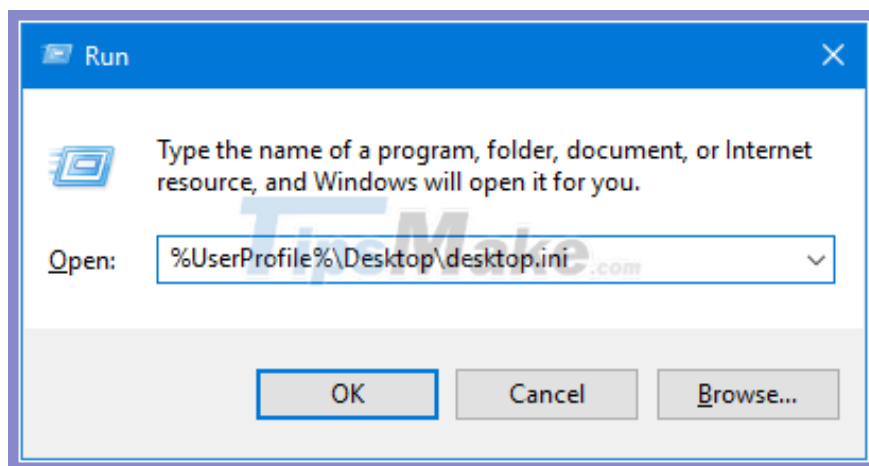
Select the icon you want to use

Step 6. Click **OK** to apply the changes.

Change the Desktop folder icon in the desktop.ini file

Step 1. Press **Win + R** key to open **Run** , copy and paste **% UserProfile% Desktopdesktop.ini** into **Run** , then click **OK** to open the file.

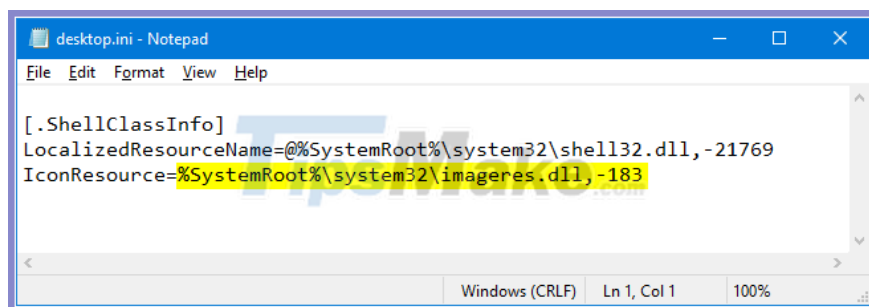
If you have changed the default location of the Desktop folder, then you will need to replace **% UserProfile% Desktop** in the path above with the actual full path for the current location of the Desktop folder.



Copy and paste **% UserProfile% Desktopdesktop.ini** into Run

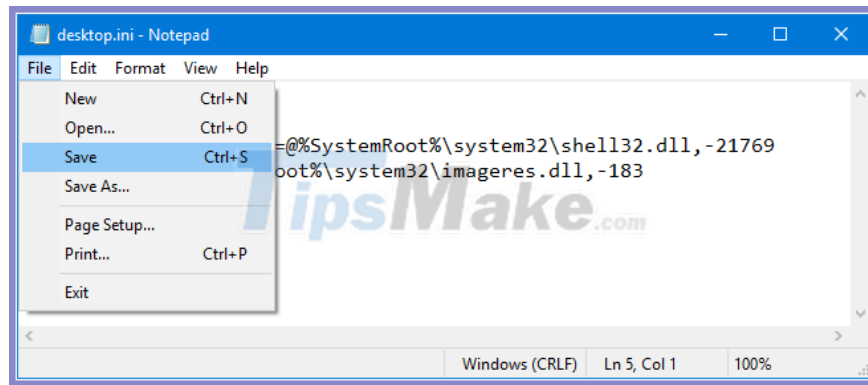
Step 2. In the line **IconResource =** in the **desktop.ini** window , change to the full path of the icon you want to use.

If you don't have the line **IconResource =** , then you'll need to add it.



Change the full path in the line **IconResource =** in the **desktop.ini** window

Step 3. Click **File** (menu bar), click **Save** (Ctrl + S) and close the **desktop.ini** window .



Save and close the desktop.ini window

Step 4. Restart the explorer process or log out and log back in to apply the changes.

Restore default Desktop folder icon in Properties

Step 1. If not, you will need to add the **Customize** tab to Desktop folder properties.

Step 2. Open the current location of the Desktop folder (eg " **C: UsersBrink** ") in File Explorer (**Win + E**).

Step 3. Right-click or press and hold the desktop folder and click **Properties**.

Step 4. Click the **Customize** tab and click the **Change Icon** button .

Step 5. Click the **Restore Defaults** button .

Step 6. Click **OK** to apply the changes.

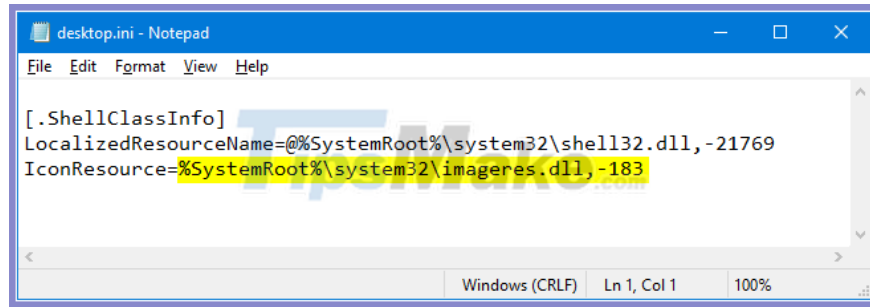
Restore the default Desktop folder icon in the desktop.ini file

Step 1. Press **Win + R** key to open **Run** , copy and paste **% UserProfile% Desktopdesktop.ini** into **Run** , then click **OK** to open the file.

If you have changed the default location of the Desktop folder, then you will need to replace **% UserProfile% Desktop** in the path above with the actual full path for the current location of the Desktop folder.

Step 2 In the line **IconResource =** in the **desktop.ini** window , change the full path to **% SystemRoot% system32imageres.dll, -183**.

If you don't have the line **IconResource =** , then you'll need to add it.

A screenshot of a Notepad window titled 'desktop.ini - Notepad'. The window has a menu bar with 'File', 'Edit', 'Format', 'View', and 'Help'. The text content is as follows:

```
[.ShellClassInfo]
LocalizedResourceName=@%SystemRoot%\system32\shell32.dll,-21769
IconResource=%SystemRoot%\system32\imageres.dll,-183
```

The 'IconResource' line is highlighted in yellow. The status bar at the bottom shows 'Windows (CRLF)', 'Ln 1, Col 1', and '100%'.

```
desktop.ini - Notepad
File Edit Format View Help
[.ShellClassInfo]
LocalizedResourceName=@%SystemRoot%\system32\shell32.dll,-21769
IconResource=%SystemRoot%\system32\imageres.dll,-183
Windows (CRLF) Ln 1, Col 1 100%
```

Change the full path to % SystemRoot% system32imageres.dll, -183

Step 3. Click **File** (menu bar), click **Save** (Ctrl + S) and close the **desktop.ini** window .

Step 4. Restart the explorer process or log out and log back in to apply the changes.

You finished reading the article "**How to change or restore Desktop folder icon in Windows**" edited by the [TipsMake](#) team. We hope this article has provided you with many useful tech tips and tricks. You can search for similar articles on tips and guides. Thank you for reading and for following us regularly.