

How to change mouse pointer on Google Chrome - Personalize mouse pointer

Changing the mouse pointer on Google Chrome is very simple with some mouse pointer changing utilities on the browser. Utilities will change the mouse pointer on Chrome in many different ways

Changing the mouse pointer on Google Chrome is very simple with some mouse pointer changing utilities on the browser. The utilities will change the mouse pointer on Chrome in many different styles, possibly according to a certain character, more interesting than the changing mouse pointer models on Windows with available features. The article below will introduce and guide you on how to use some mouse pointer changing utilities on Google Chrome.

How to change mouse pointer on Chrome using Cute Custom Cursors

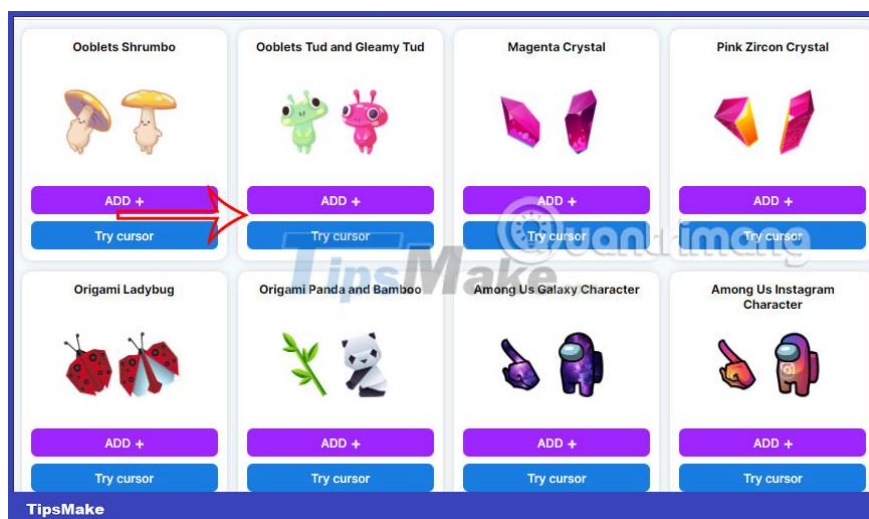
Step 1:

We download the Cute Custom Cursors utility on Chrome browser according to the link below.

Step 2:

After you install the Cute Custom Cursors utility, you will be redirected to the utility's library page with many different cursor themes.

If you want **to try** any type of mouse pointer, click **the Try cursor button** to see it. If you like it, click the Add button to add it to your **cursor list** .



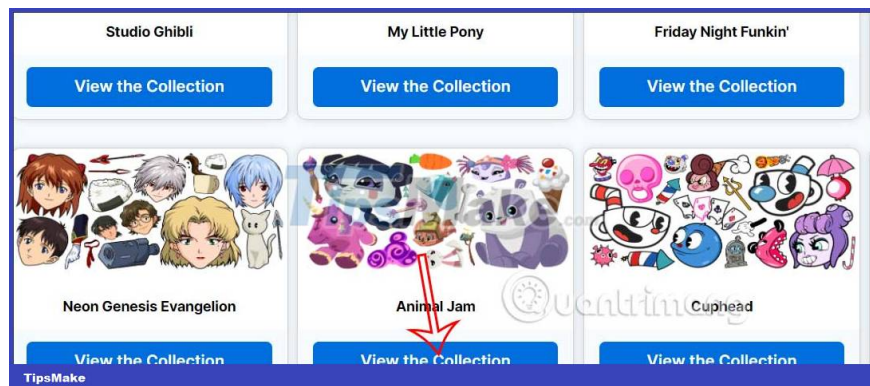
Step 3:

Scroll down and **click Get More cursors** to expand the cursor topic on the utility.



Step 4:

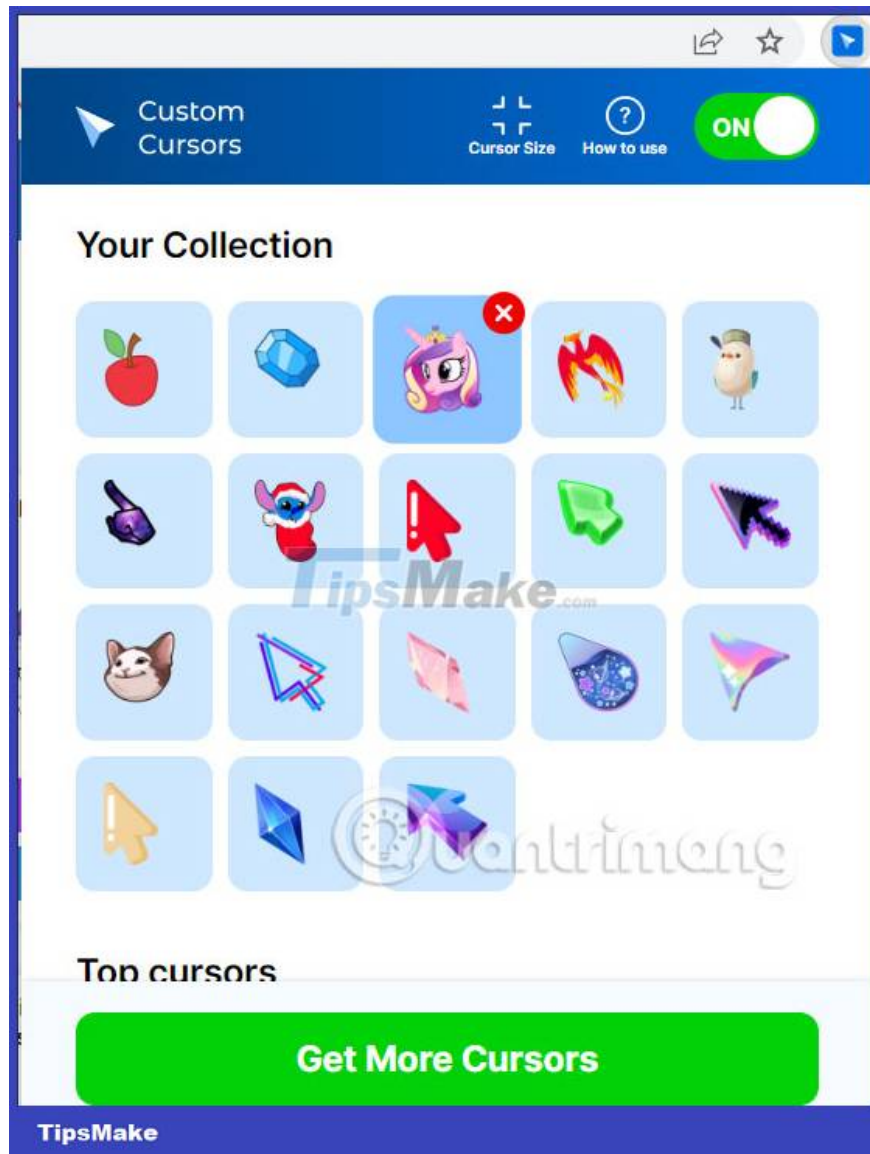
At this point, users will see the cursor icon themes, **click View the Collection** to see the content inside. Then you also click Add to add it to your mouse pointer library if you want.



Step 5:

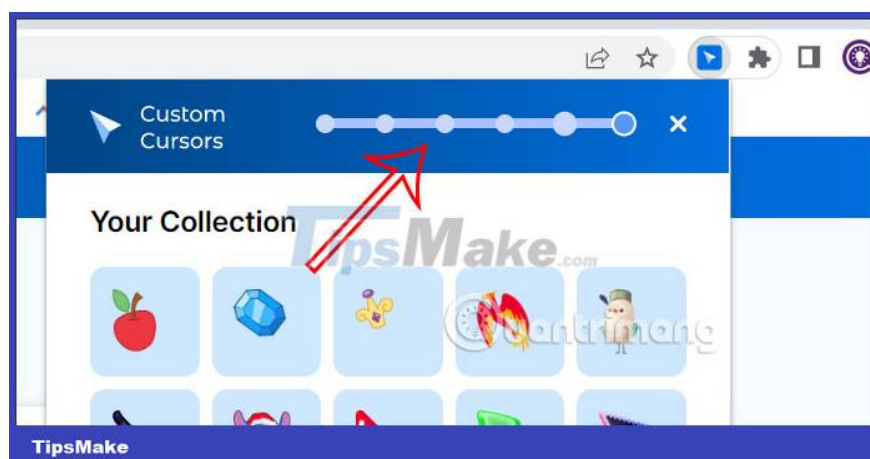
Click **the Cute Custom Cursor widget icon** to see **your cursor icons at Your Collection** . Click to select which icon you want to use.

As a result, you will see the mouse cursor icon change immediately and appear on all Chrome websites, except Chrome Web Store.



Step 6:

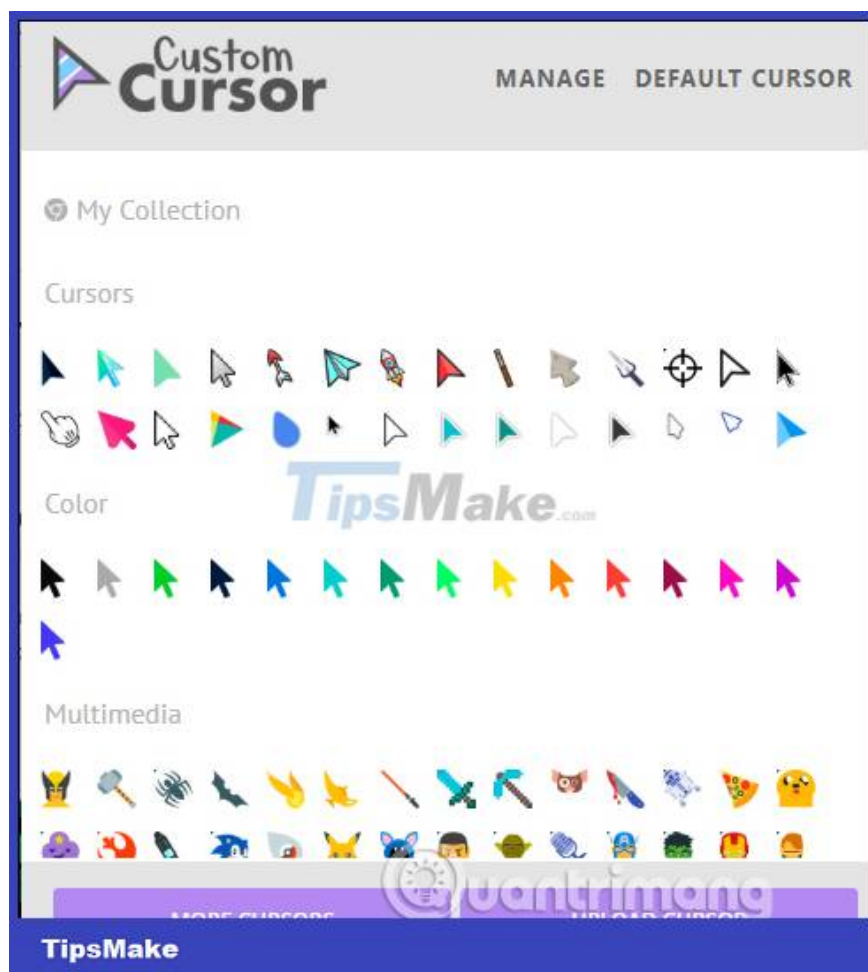
The utility allows **adjusting the size of the mouse pointer icon** , you click **Cursor size** and use the slider to increase or decrease the size as you like.



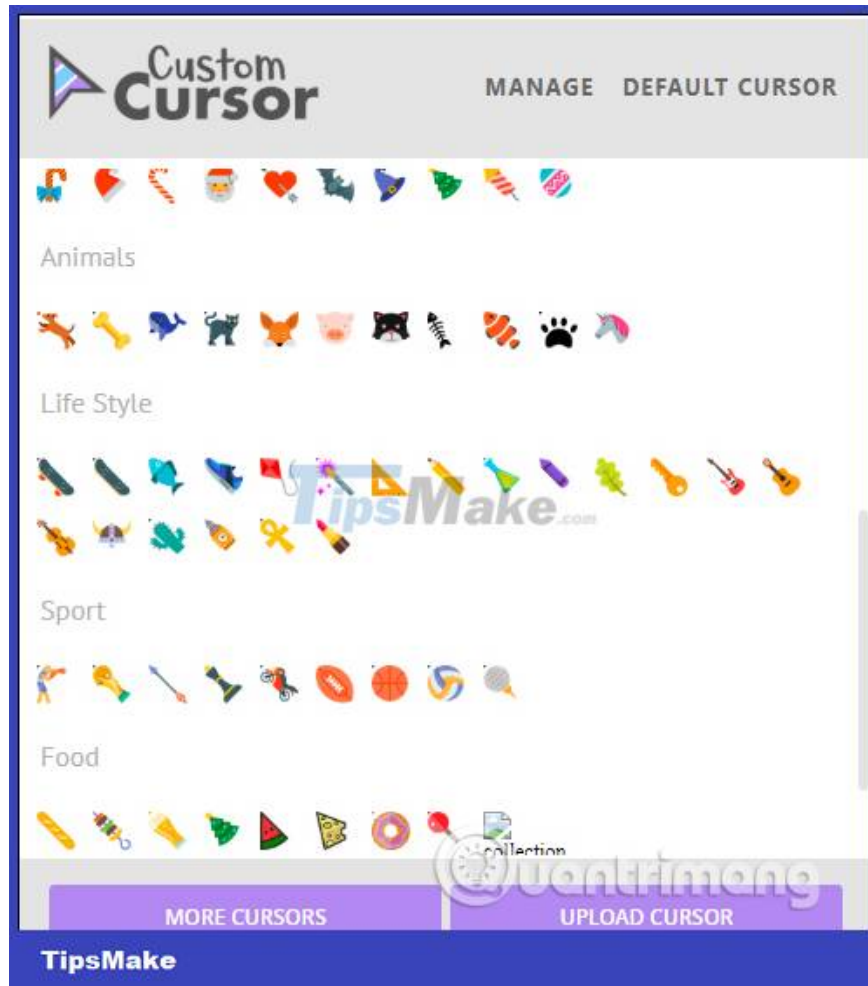


Step 2:

After installing the utility, click on the icon at the bottom of the address access bar. The display interface with all mouse pointer samples is classified into many different topics for users to easily search and choose.



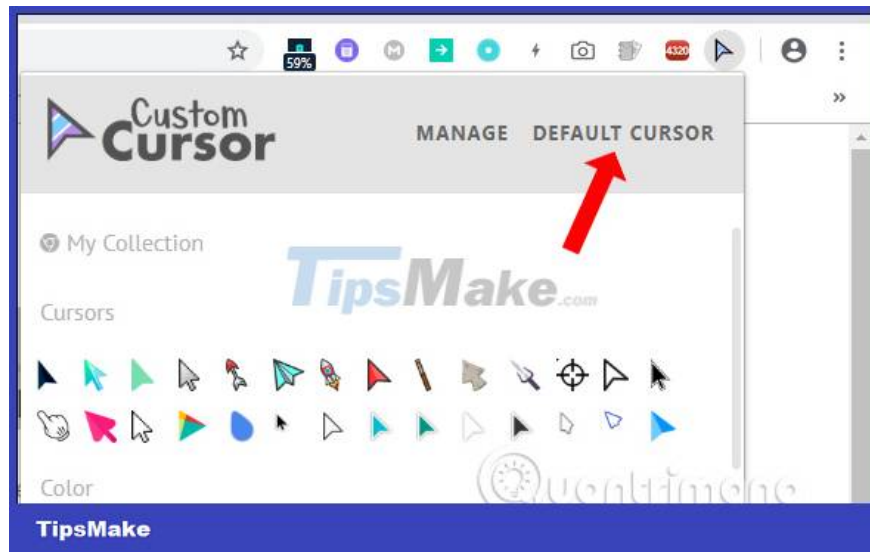
You will see many strange cursor styles such as Animals, Life Style, Food,, of 8 cursor themes to choose from.



Step 3:

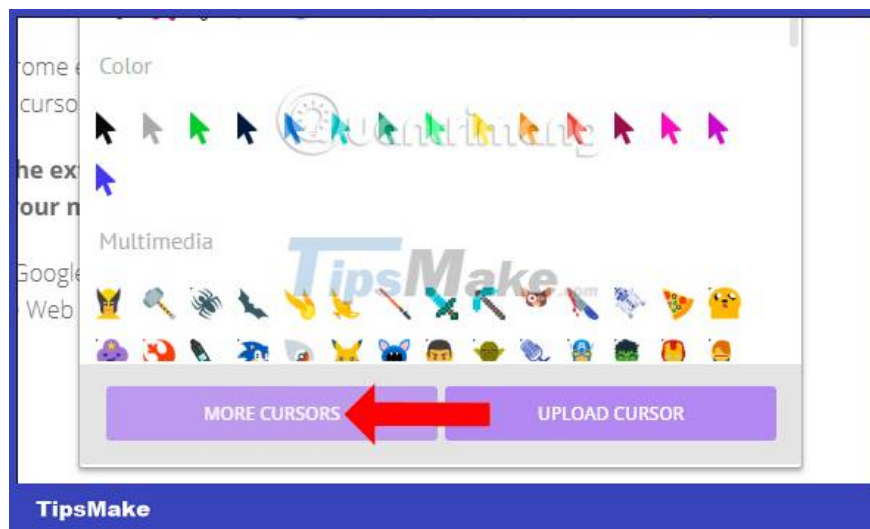
If you want to use any type of mouse, just click it. To return to the old mouse pointer style, users click **Default Cursor** in the utility's mouse pointer list interface.

All mouse pointing styles are free to use, no need to register an account.



Step 4:

To add more mouse pointer styles to the mouse pointer type list interface, click **More Cursor** .



Step 5:

The Cursor Packs interface displays many different cursor samples. You can click on the cursor style to see the image more clearly. Click on the left and right arrows to switch.



If you like any type of mouse pointer, click **the Add button** to add it to the list of utilities on the browser.

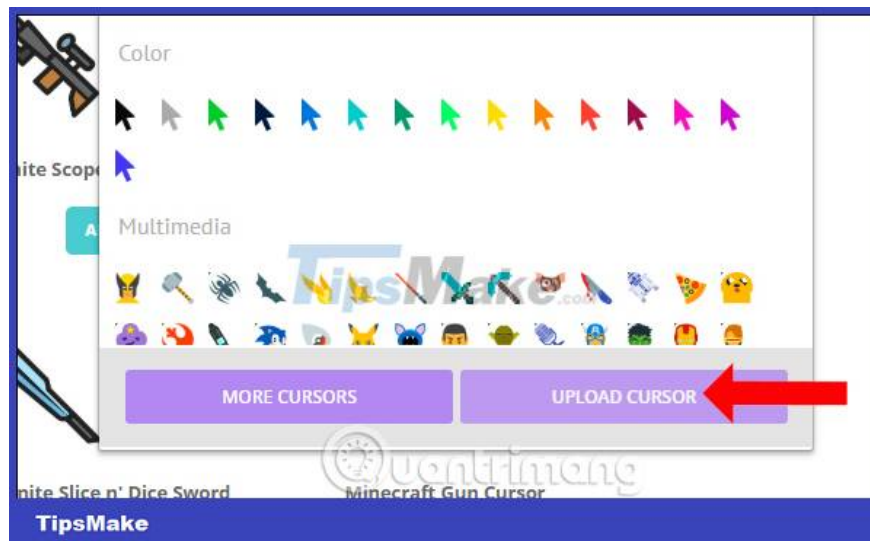


New mouse pointer models will not be grouped as above but will be separated into different names.



Step 6:

If you want to design a new mouse pointer yourself, in the utility interface click **Upload Cursor** .



Step 7:

Immediately after that, the user will be transferred to the new website interface to upload the mouse cursor image. You need to prepare a transparent background mouse pointer PNG image with a size of 128×128 pixels, a hand pointing PNG image with a transparent background with a size of 128×128 pixels.

Click **Add New** to download 2 mouse pointer images available on the computer.



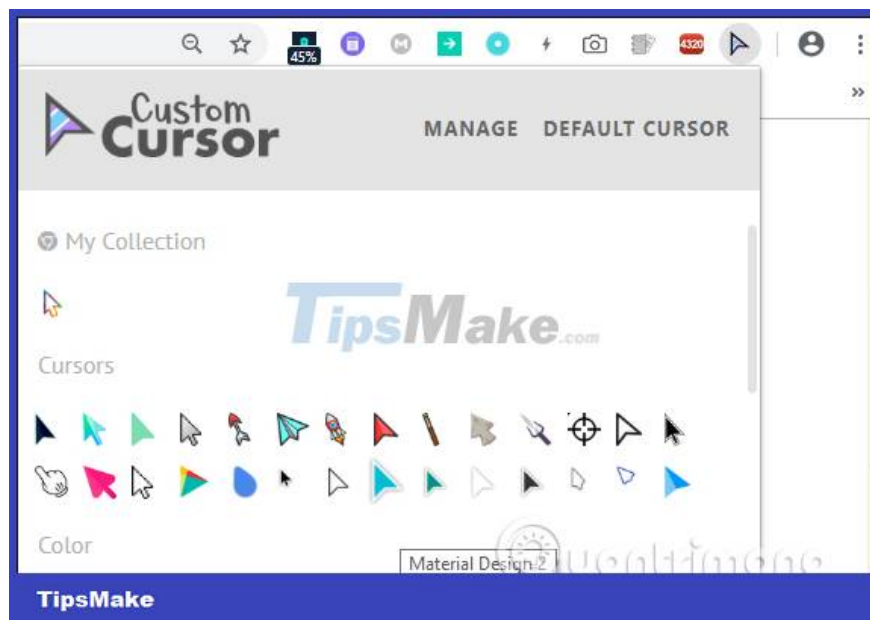
Displays the interface to download images. The Cursor section to select the downloaded mouse cursor image, Pointer to download the hand image are only available on computers.



If you have uploaded a photo and want to delete it, click on the trash icon to delete the image and re-upload it.

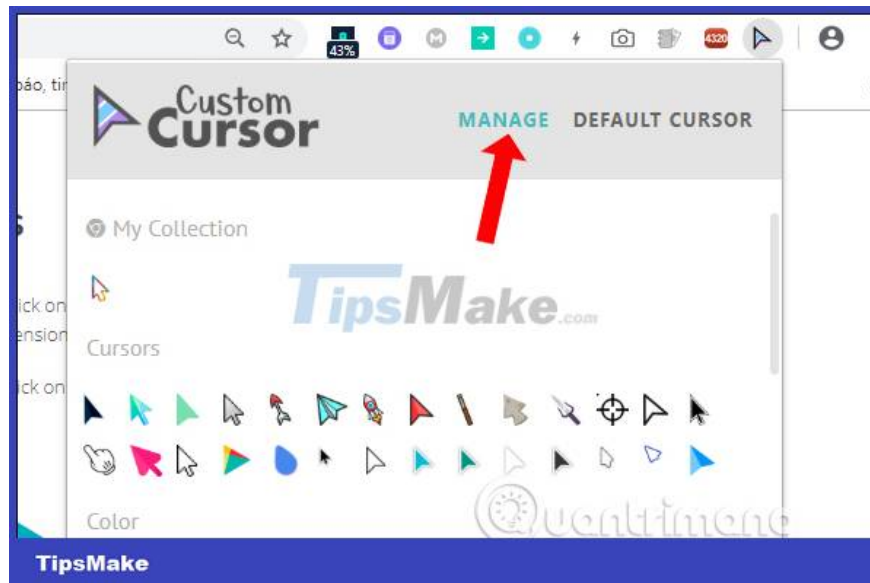


Your newly added word cursor is placed in **the My Collection section** in the utility's interface on the toolbar. The number of new mouse models created is unlimited.

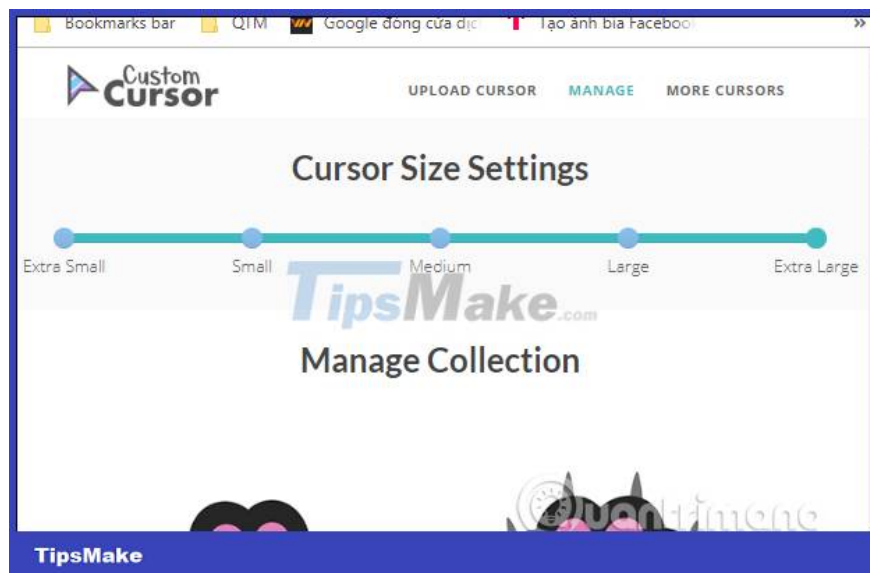


Step 8:

To adjust the mouse pointer size, **click Manage** on the utility interface to switch to the setup interface.



In the Cursor Size Settings interface, mouse size is divided into 5 different levels, including Extra Small, Small, Medium, Large and Extra Large. Move to new size for mouse pointer.



In addition, this interface also displays the mouse pointer types that we have added to the list. Click **the Delete button** to delete the mouse pointer style you no longer want to use.



With the Custom Cursor for Chrome utility, the mouse pointer on the Chrome browser will completely change into the models provided by the utility, or uploaded by you yourself. Of course, these types of mouse cursors will only display on Chrome browser.

See more:

Wishing you success!

You finished reading the article "**How to change mouse pointer on Google Chrome - Personalize mouse pointer**" edited by the [TipsMake](#) team. We hope this article has provided you with many useful tech tips and tricks. You can search for similar articles on tips and guides. Thank you for reading and for following us regularly.